

Nevada Economy In Brief

June 2006

Nevada's statewide unemployment rate rose a modest two-tenths of a percentage point to 4.2 percent in June as the annual interplay between the end of the school year and the start of summer employment began. The rates in the state's metropolitan areas, which are not adjusted for anticipated seasonal variations, rose more sharply. The rate in the Las Vegas-Paradise MSA rose to 4.3 percent, an increase of seven-tenths of a percentage point over the month. In the Reno-Sparks and Carson City metropolitan areas, the rates rose by four-tenths of a percentage point to 4.0 percent and 4.8 percent, respectively.

Although unemployment rose over the month, the Nevada economy continued to provide new employment opportunities. The state's private businesses created 8,200 new jobs in June to more than offset the seasonal loss of 4,800 government jobs. The construction sector added 2,100 jobs over the month and continues to provide approximately one-fourth of all new jobs in the state.

Economic Indicators

UNEMPLOYMENT RATES JUN 2006

NEVADA (SA)*	4.2%
LAS VEGAS-PARADISE MSA	4.3%
RENO-SPARKS MSA	4.0%
CARSON CITY MSA	4.8%
ELKO MICROPOLITAN AREA	4.2%
UNITED STATES (SA)*	4.6%
CALIFORNIA (SA)*	4.9%

*(SA) - Seasonally Adjusted

JOB GROWTH (LAST 12 MONTHS)

NEVADA	5.0%
LAS VEGAS-PARADISE MSA	5.4%
RENO-SPARKS MSA	5.0%
CARSON CITY MSA	2.7%
UNITED STATES	1.4%
CALIFORNIA	1.6%

CONSUMER PRICE INDEX (1yr %Chg)

UNITED STATES	4.3%
---------------	------

GROSS GAMING WIN (% CHANGE)

MAY 2005 - MAY 2006

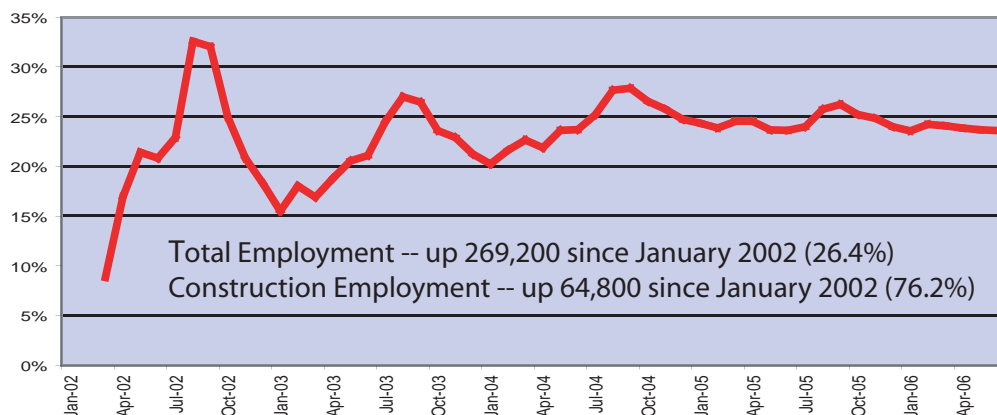
NEVADA	9.0%
CLARK COUNTY	10.7%
WASHOE COUNTY	3.1%

TAXABLE SALES (% CHANGE)

MAY 2005 - MAY 2006

NEVADA	6.2%
CLARK COUNTY	5.9%
WASHOE COUNTY	6.4%

CONSTRUCTION JOBS AS PERCENT OF ALL NEW JOBS CREATED IN NEVADA
Cumulative, since January 2002



Meanwhile, the most expensive construction project in the state's history has begun. MGM Mirage began work on the \$7 billion Project CityCenter on the Las Vegas Strip. Plans call for seven high-rise towers that will provide 7,800 hotel and condominium units and considerable retail and entertainment space. An estimated 7,200 workers will be on site at the peak of construction, and the project is expected to provide about 12,000 permanent jobs. The development is slated to open in 2009.

Project CityCenter is the largest, but not the only, major project planned for the Las Vegas Strip. The Venetian and Wynn Las Vegas resorts are building new hotels adjacent to (Continued on Page2)

In This Issue

Nevada Economy In Brief.....	1&2
Taxable Sales /Gaming Jobs.....	2
Employment/Unemployment Data Nevada Statewide.....	3
Las Vegas-Paradise MSA.....	4
Reno-Sparks MSA.....	5
Carson City MSA.....	6
Nevada County Summary.....	7
Contact Information.....	8

(Note: Data for July 2006 will be released on August 18, 2006)

(Continued from Page 1)

their existing facilities. New investors have proposed development on the former Westward Ho hotel and Wet 'n Wild water park sites. The most widely anticipated announcement, however, is Harrah's Entertainment's plans for the mass of land it has acquired behind its properties on the east side of the Strip.

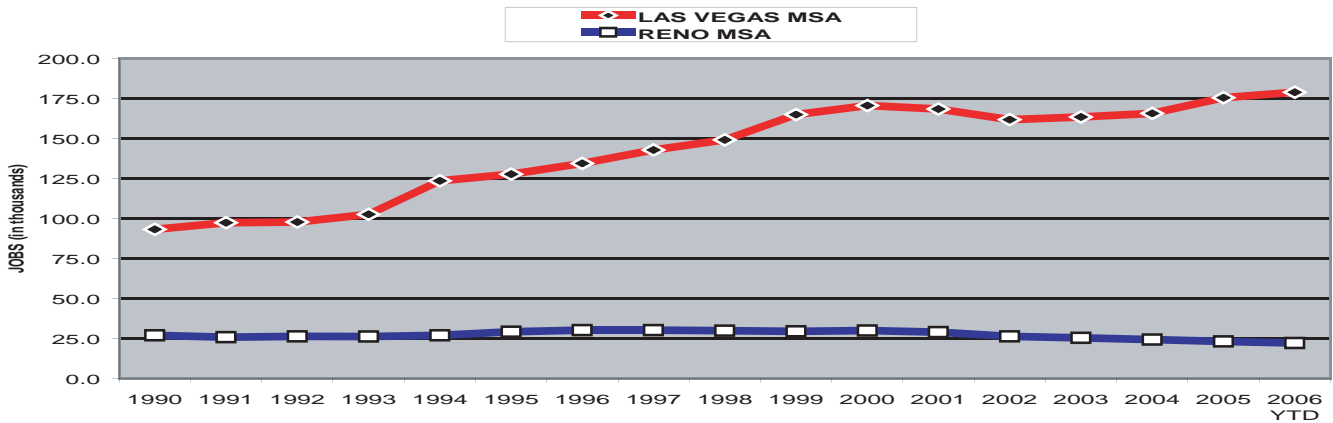
While billions of dollars continue to pour into the Las Vegas tourism sector, a renewed interest in the Reno-Sparks gaming sector has been largely overlooked. Station Casinos, a major gaming entity in Las Vegas, plans to enter the Reno market with two projects. The Reno Hilton, Reno's largest hotel-casino, is under new ownership and has been renamed the Grand Sierra Resort. The new owners have ambitious expansion plans. Olympia Gaming, meanwhile, announced plans for a 1,000-room resort at the Sparks Marina.

In short, Nevada's economic performance remains impressive given the current political and economic backdrop. Record oil prices, rising interest rates, a slowing global economy, North Korean missiles and escalated tensions in the Middle East have failed to stem the optimism about Nevada's economic future.

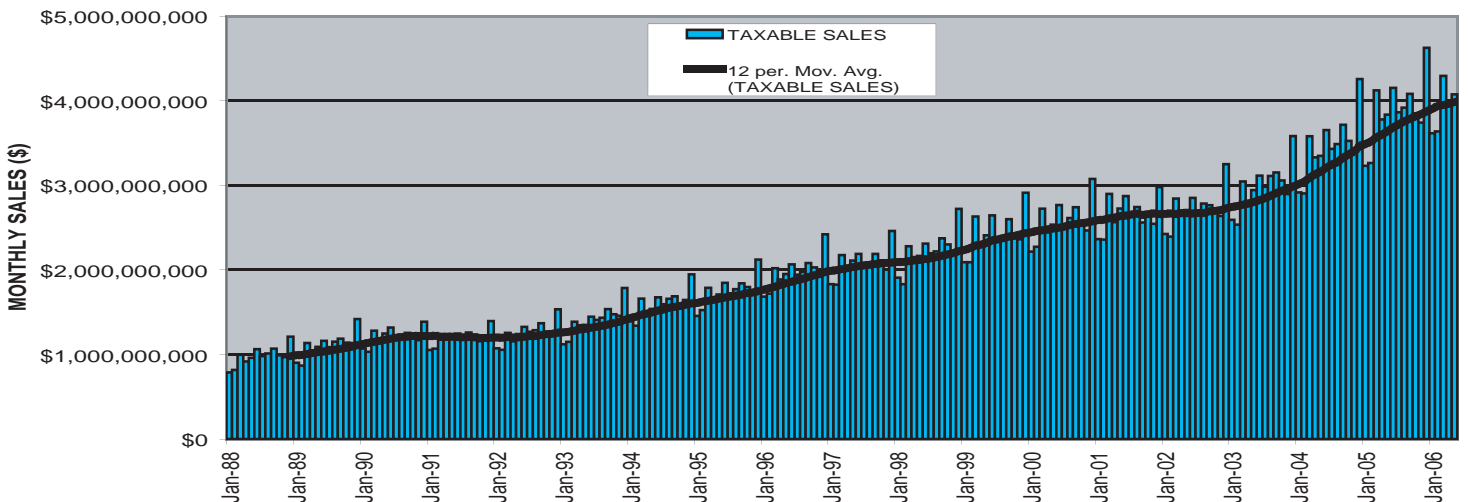
NOTE -- The following tables have been updated with more current data in this edition:

Pages 3-6: Size Class of Industries (Dec. 2005)
 Largest Private Employers (Dec. 2005)
 Average Wages by Industry (2006)
 Page 7: Employment by Area (Qtr. 4 2005)
 Employment by Industry (Qtr. 4 2005)

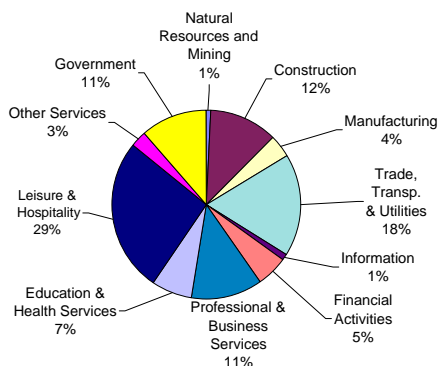
CASINO HOTELS & GAMING EMPLOYMENT
 Las Vegas and Reno Metropolitan Areas
 Annual Averages, 1990 - Present



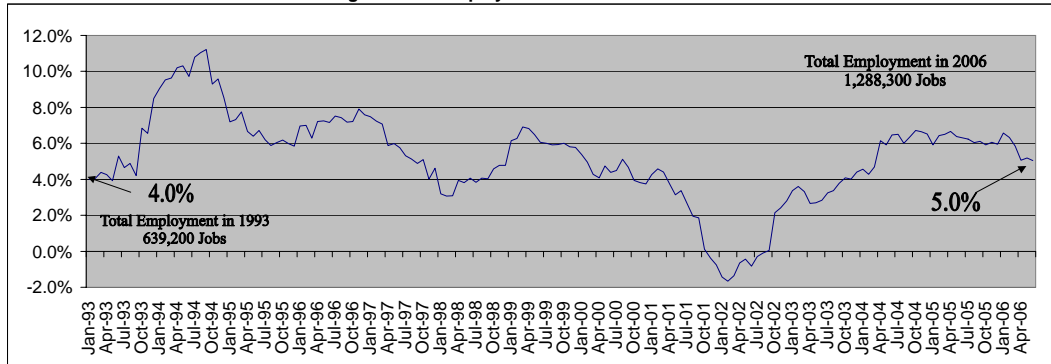
NEVADA TAXABLE SALES
 JANUARY 1988 - MAY 2006



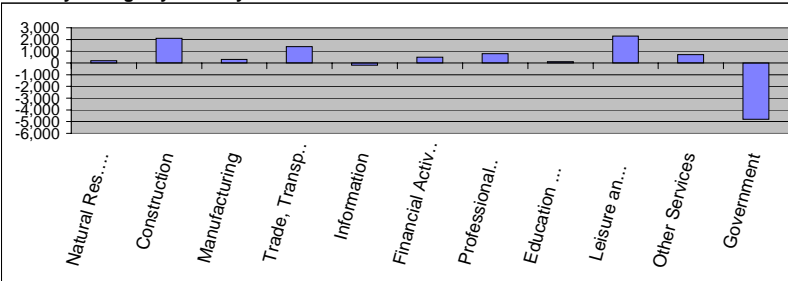
Nevada Industry Composition



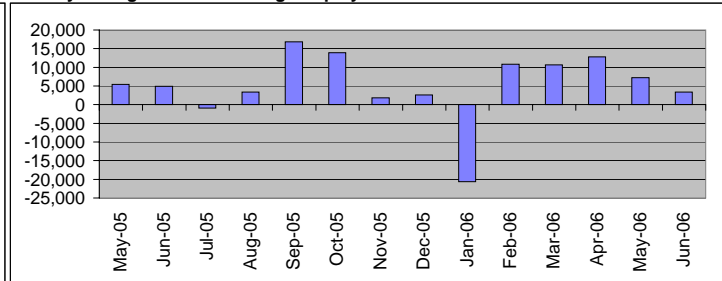
Annual Job Growth Rate for Total NonAgricultural Employment



Monthly Change by Industry



Monthly Change In Total Non-Ag. Employment



Nevada Employment By Industry

	JUN 2006	MAY 2006	JUN 2005	Monthly Change		Annual Change	
				Total	%	Total	%
Total All Industries	1,288,300	1,284,900	1,226,400	3,400	0.3%	61,900	5.0%
Natural Resources and Mining	11,300	11,100	10,700	200	1.8%	600	5.6%
Construction	149,800	147,700	134,700	2,100	1.4%	15,100	11.2%
Manufacturing	49,400	49,100	47,900	300	0.6%	1,500	3.1%
Trade, Transportation & Utilities	225,500	224,100	213,600	1,400	0.6%	11,900	5.6%
Wholesale	39,100	38,900	37,400	200	0.5%	1,700	4.5%
Retail	137,400	136,300	130,000	1,100	0.8%	7,400	5.7%
Trans, Warehousing and Utilities	49,000	48,900	46,200	100	0.2%	2,800	6.1%
Information	14,600	14,800	14,700	-200	-1.4%	-100	-0.7%
Financial Activities	68,300	67,800	65,100	500	0.7%	3,200	4.9%
Finance and Insurance	42,100	41,700	40,100	400	1.0%	2,000	5.0%
Professional & Business Services	157,400	156,600	144,100	800	0.5%	13,300	9.2%
Education & Health Services	88,100	88,000	84,800	100	0.1%	3,300	3.9%
Health Care and Social Assistance	81,600	81,400	78,900	200	0.2%	2,700	3.4%
Leisure & Hospitality	339,800	337,500	333,700	2,300	0.7%	6,100	1.8%
Casino Hotels and Gaming	219,900	218,300	219,500	1,600	0.7%	400	0.2%
Food Services and Drinking Places	91,200	90,700	86,500	500	0.6%	4,700	5.4%
Other Services	37,500	36,800	35,000	700	1.9%	2,500	7.1%
Government	146,600	151,400	142,100	-4,800	-3.2%	4,500	3.2%

Size Class of Industries - Dec 2005 (Non-Government Worksites)

Size Class	Employees Per Worksite	Number of Worksites	Employment in Size Class	% of Total Employment
9	1000+	95	210,628	19.0%
8	500-999	145	99,072	8.9%
7	250-499	245	84,188	7.6%
6	100-249	1,085	164,666	14.9%
5	50-99	1,909	132,211	11.9%
4	20-49	5,782	175,067	15.8%
3	10-19	8,093	109,930	9.9%
2	5-9	11,230	75,006	6.8%
1	0-4	38,855	56,903	5.1%
Total		67,439	1,107,671	100.0%

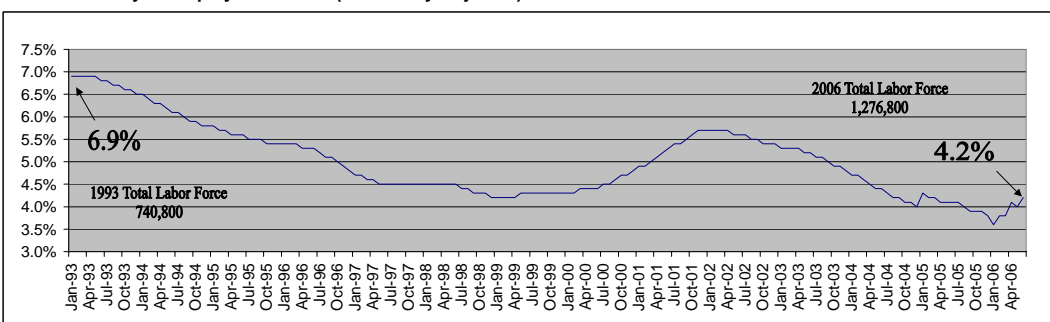
Nevada's Largest Private Employers - Dec 2005

Employer	Employees	Industry
BELLAGIO, LLC	9000-9499	Casino Hotels
WYNN LAS VEGAS, LLC	8000-8499	Casino Hotels
MGM GRAND HOTEL/CASINO	8000-8499	Casino Hotels
MANDALAY BAY RESORT AND CASINO	7500-7599	Casino Hotels
MIRAGE CASINO-HOTEL, THE	5500-5999	Casino Hotels
CAESARS PALACE	5000-5499	Casino Hotels
RIO SUITE HOTEL & CASINO	4000-4499	Casino Hotels
LUXOR	3500-3999	Casino Hotels
EXCALIBUR HOTEL & CASINO	3500-3999	Casino Hotels
FLAMINGO HILTON CORPORATION	3500-3999	Casino Hotels
BALLY'S & PARIS CASINO HOTELS	3500-3999	Casino Hotels
HARRAH'S LAS VEGAS, INC	3000-3499	Casino Hotels
TREASURE ISLAND AT THE MIRAGE	3000-3499	Casino Hotels
VENETIAN CASINO RESORTS, LLC	3000-3499	Casino Hotels
ALADDIN RESORT & CASINO	3000-3499	Casino Hotels

Labor Force and Unemployment

	JUN 2006	MAY 2006	JUN 2005	Monthly Change		Annual Change	
				Total	%	Total	%
Total Labor Force	1,276,800	1,266,400	1,223,000	10,400	0.8%	53,800	4.4%
Unemployment	54,900	47,000	50,900	7,900	16.8%	4,000	7.9%
Unemployment Rate	4.3%	3.7%	4.2%	*	*	*	*
Unemployment Rate (SA)	4.2%	4.0%	4.1%	*	*	*	*
Total Employment	1,221,900	1,219,400	1,172,100	2,500	0.2%	49,800	4.2%

Nevada Monthly Unemployment Rates (Seasonally Adjusted) 1993 to Current

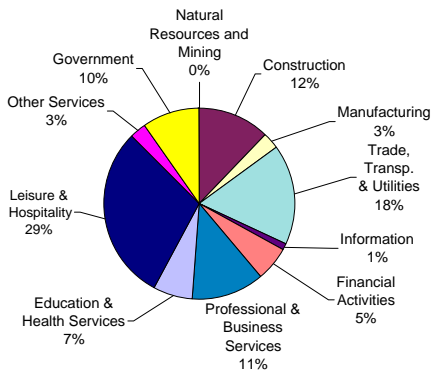


2006 Avg Wages By Industry-OES Survey Data

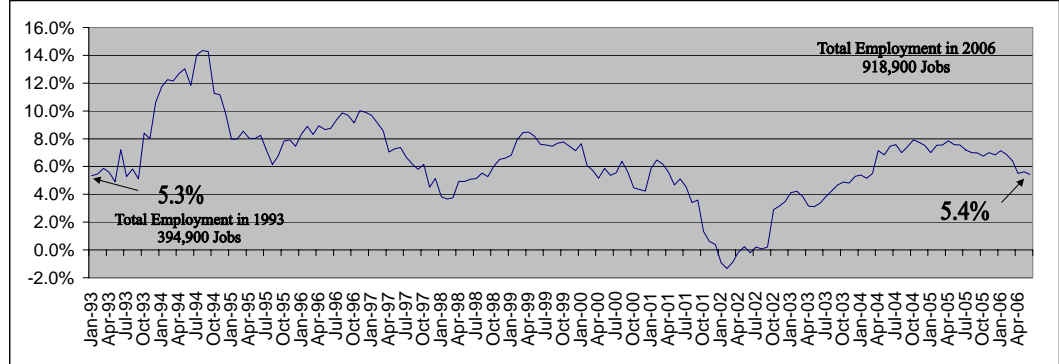
Industry	Avg. Hourly Wage
Total All Industries	\$17.07
Natural Resources and Mining	\$23.31
Construction	\$20.49
Manufacturing	\$18.26
Trade, Transportation & Utilities	\$15.74
Information	\$22.57
Financial Activities	\$19.72
Professional & Business Services	\$19.22
Education & Health Services	\$20.34
Leisure & Hospitality	\$11.77
Other Services	\$15.04
Government	\$23.83

Employment data for current month is preliminary and previous month has been revised. All data subject to annual benchmark revisions.
 Note: The statewide unemployment rate is seasonally adjusted

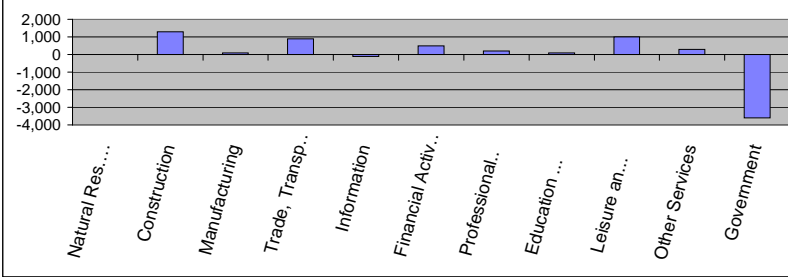
Las Vegas-Paradise MSA Industry Composition



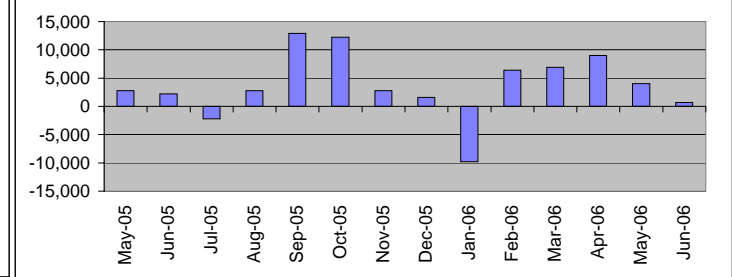
Annual Job Growth Rate for Total NonAgricultural Employment



Monthly Change by Industry



Monthly Change In Total Non-Ag. Employment



Las Vegas-Paradise MSA Employment By Industry

	JUN 2006	MAY 2006	JUN 2005	Monthly Change		Annual Change	
				Total	%	Total	%
Total All Industries	918,900	918,200	871,600	700	0.1%	47,300	5.4%
Natural Resources and Mining	400	400	400	0	0.0%	0	0.0%
Construction	111,500	110,200	100,600	1,300	1.2%	10,900	10.8%
Manufacturing	26,300	26,200	24,900	100	0.4%	1,400	5.6%
Trade, Transportation & Utilities	154,900	154,000	147,100	900	0.6%	7,800	5.3%
Wholesale	23,500	23,400	22,100	100	0.4%	1,400	6.3%
Retail	97,200	96,500	92,700	700	0.7%	4,500	4.9%
Trans, Warehousing and Utilities	34,200	34,100	32,300	100	0.3%	1,900	5.9%
Information	10,600	10,700	10,400	-100	-0.9%	200	1.9%
Financial Activities	52,600	52,100	49,500	500	1.0%	3,100	6.3%
Finance and Insurance	31,900	31,500	30,200	400	1.3%	1,700	5.6%
Professional & Business Services	113,200	113,000	103,700	200	0.2%	9,500	9.2%
Education & Health Services	60,400	60,300	57,800	100	0.2%	2,600	4.5%
Health Care and Social Assistance	55,800	55,700	53,500	100	0.2%	2,300	4.3%
Leisure & Hospitality	273,600	272,600	267,700	1,000	0.4%	5,900	2.2%
Casino Hotels and Gaming	180,700	180,000	179,500	700	0.4%	1,200	0.7%
Food Services and Drinking Places	71,000	70,800	67,500	200	0.3%	3,500	5.2%
Other Services	26,200	25,900	24,200	300	1.2%	2,000	8.3%
Government	89,200	92,800	85,300	-3,600	-3.9%	3,900	4.6%

Size Class of Industries - Dec 2005 (Non-Government Worksites)

Size Class	Employees Per Worksite	Number of Worksites	Employment in Size Class	% of Total Employment
9	1000+	76	178,026	22.1%
8	500-999	113	78,549	9.7%
7	250-499	184	63,194	7.8%
6	100-249	772	117,854	14.6%
5	50-99	1,357	94,071	11.7%
4	20-49	3,937	119,830	14.9%
3	10-19	5,240	71,282	8.8%
2	5-9	7,158	47,948	6.0%
1	0-4	24,140	35,004	4.3%
Total		42,977	805,758	100.0%

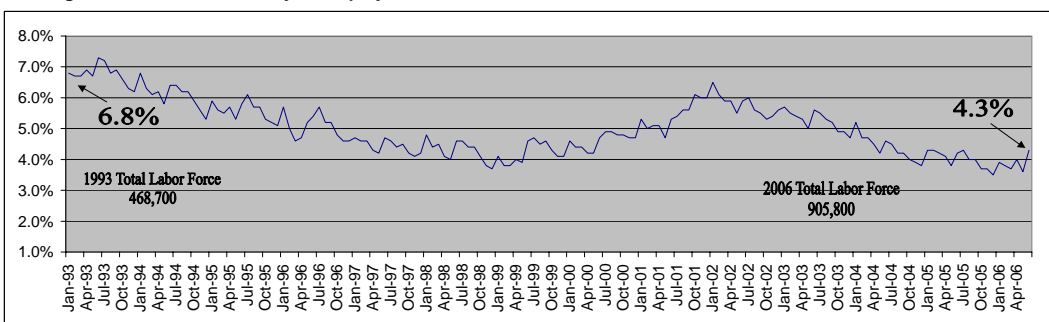
Largest Private Employers - Dec 2005

Employer	Employees	Industry
BELLAGIO, LLC	9000-9499	Casino Hotels
WYNN LAS VEGAS, LLC	8000-8499	Casino Hotels
MGM GRAND HOTEL/CASINO	8000-8499	Casino Hotels
MANDALAY BAY RESORT AND CASINO	7500-7599	Casino Hotels
MIRAGE CASINO-HOTEL, THE	5500-5999	Casino Hotels
CAESARS PALACE	5000-5499	Casino Hotels
RIO SUITE HOTEL & CASINO	4000-4499	Casino Hotels
LUXOR	3500-3999	Casino Hotels
EXCALIBUR HOTEL & CASINO	3500-3999	Casino Hotels
FLAMINGO HILTON CORPORATION	3500-3999	Casino Hotels
BALLY'S & PARIS CASINO HOTELS	3500-3999	Casino Hotels
HARRAH'S LAS VEGAS, INC	3000-3499	Casino Hotels
TREASURE ISLAND AT THE MIRAGE	3000-3499	Casino Hotels
VENETIAN CASINO RESORTS, LLC	3000-3499	Casino Hotels
ALADDIN RESORT & CASINO	3000-3499	Casino Hotels

Labor Force and Unemployment

	JUN 2006	MAY 2006	JUN 2005	Monthly Change		Annual Change	
				Total	%	Total	%
Total Labor Force	905,800	901,800	866,200	4,000	4.6%	39,600	4.6%
Unemployment	38,800	32,900	36,100	5,900	17.9%	2,700	7.5%
Unemployment Rate	4.3%	3.6%	4.2%	*	*	*	*
Total Employment	867,000	868,900	830,100	-1,900	-0.2%	36,900	4.4%

Las Vegas-Paradise MSA Monthly Unemployment Rates 1993 to Current



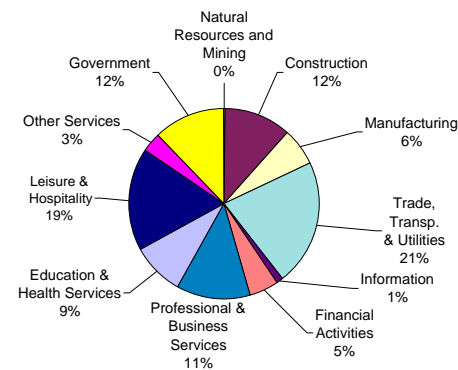
2006 Avg Wages By Industry-OES Survey Data

Industry	Avg. Hourly Wage
Total All Industries	\$16.92
Natural Resources and Mining	\$19.75
Construction	\$20.71
Manufacturing	\$17.89
Trade, Transportation & Utilities	\$15.46
Information	\$23.76
Financial Activities	\$19.75
Professional & Business Services	\$19.40
Education & Health Services	\$19.79
Leisure & Hospitality	\$12.11
Other Services	\$14.70
Government	\$24.63

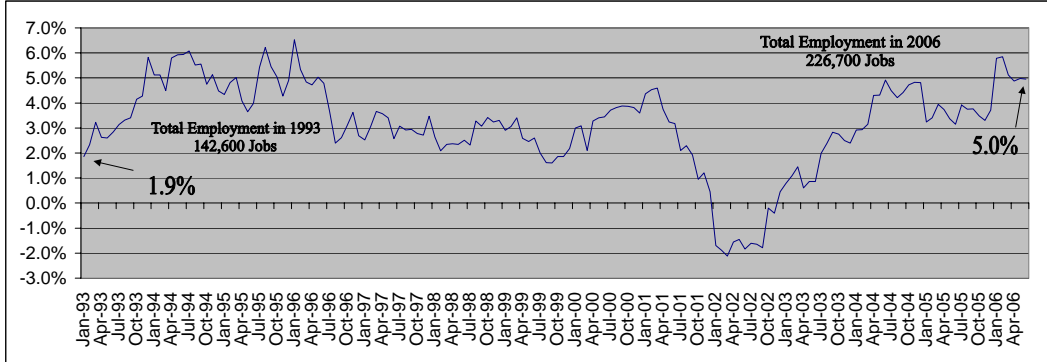
Employment data for current month is preliminary and previous month has been revised. All data subject to annual benchmark revisions.

*MSA = Metropolitan Statistical Area / Las Vegas-Paradise MSA = Clark County

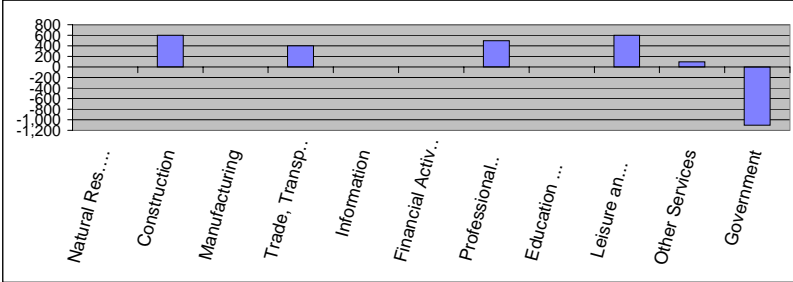
Reno-Sparks MSA Industry Composition



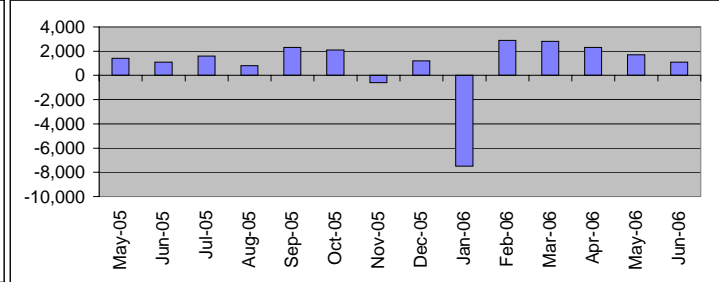
Annual Job Growth Rate for Total NonAgricultural Employment



Monthly Change by Industry



Monthly Change In Total Non-Ag. Employment



Reno-Sparks MSA Employment By Industry

	JUN 2006	MAY 2006	JUN 2005	Monthly Change		Annual Change	
				Total	%	Total	%
Total All Industries	226,700	225,600	216,000	1,100	0.5%	10,700	5.0%
Natural Resources and Mining	400	400	400	0	0.0%	0	0.0%
Construction	26,100	25,500	22,800	600	2.4%	3,300	14.5%
Manufacturing	14,300	14,300	14,100	0	0.0%	200	1.4%
Trade, Transportation & Utilities	48,400	48,000	44,900	400	0.8%	3,500	7.8%
Wholesale	11,200	11,100	10,900	100	0.9%	300	2.8%
Retail	25,400	25,100	23,200	300	1.2%	2,200	9.5%
Trans, Warehousing and Utilities	11,800	11,800	10,800	0	0.0%	1,000	9.3%
Information	2,800	2,800	3,000	0	0.0%	-200	-6.7%
Financial Activities	11,000	11,000	10,900	0	0.0%	100	0.9%
Finance and Insurance	7,100	7,100	6,900	0	0.0%	200	2.9%
Professional & Business Services	28,400	27,900	26,100	500	1.8%	2,300	8.8%
Education & Health Services	20,100	20,100	19,700	0	0.0%	400	2.0%
Leisure & Hospitality	39,800	39,200	39,400	600	1.5%	400	1.0%
Casino Hotels and Gaming	22,900	22,500	23,800	400	1.8%	-900	-3.8%
Food Services and Drinking Places	12,900	12,800	12,000	100	0.8%	900	7.5%
Other Services	7,400	7,300	7,100	100	1.4%	300	4.2%
Government	28,000	29,100	27,600	-1,100	-3.8%	400	1.4%

Size Class of Industries - Dec 2005 (Non-Government Worksites)

Size Class	Employees Per Worksite	Number of Worksites	Employment in Size Class	% of Total Employment
9	1000+	14	25,028	13.2%
8	500-999	18	11,450	6.0%
7	250-499	36	12,049	6.3%
6	100-249	213	31,577	16.6%
5	50-99	365	24,848	13.1%
4	20-49	1,174	35,534	18.7%
3	10-19	1,670	22,875	12.0%
2	5-9	2,248	14,928	7.9%
1	0-4	7,593	11,620	6.1%
Total		13,331	189,909	100.0%

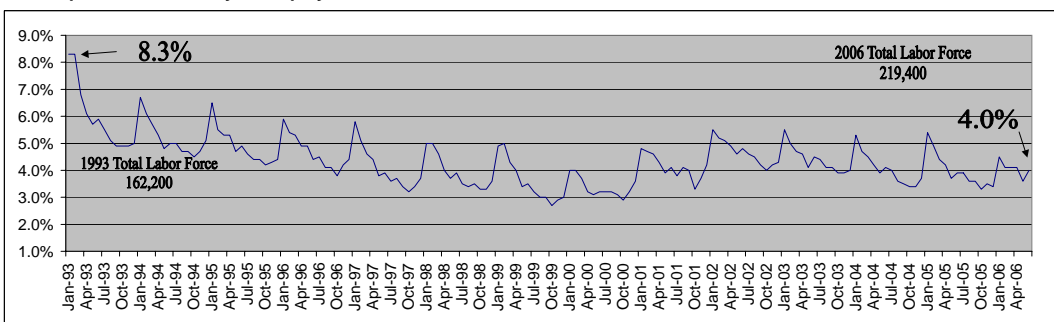
Largest Private Employers - Dec 2005

Employer	Employees	Industry
INTERNATIONAL GAME TECHNOLOGY	2500-2999	Misc. Manufac.
WASHOE MEDICAL CENTER, INC	2000-2499	Hospitals
SILVER LEGACY RESORT CASINO	2000-2499	Casino Hotels
PEPPERMILL HOTEL CASINO - RENO	1500-1999	Casino Hotels
ATLANTIS CASINO RESORT	1500-1999	Casino Hotels
RENO HILTON	1500-1999	Casino Hotels
ST. MARYS	1500-1999	Hospitals
ELDORADO HOTEL & CASINO	1500-1999	Casino Hotels
CIRCUS CIRCUS CASINOS, INC-RENO	1500-1999	Casino Hotels
INTEGRITY STAFFING SOLUTIONS	1500-1999	Temporary Help
SPARKS NUGGET, INC.	1500-1999	Casino Hotels
HIRE DYNAMICS, LLC	1500-1999	Temporary Help
HARRAH'S RENO	1000-1499	Casino Hotels
UNITED PARCEL SERVICE	1000-1499	Couriers
CLUB CAL-NEVA	900-999	Casino Hotels

Labor Force and Unemployment

	JUN 2006	MAY 2006	JUN 2005	Monthly Change		Annual Change	
				Total	%	Total	%
Total Labor Force	219,400	217,600	210,500	1,800	0.8%	8,900	4.2%
Unemployment	8,900	7,900	8,200	1,000	12.7%	700	8.5%
Unemployment Rate	4.0%	3.6%	3.9%	*	*	*	*
Total Employment	210,500	209,700	202,300	800	0.4%	8,200	4.1%

Reno-Sparks MSA Monthly Unemployment Rates 1993 to Current



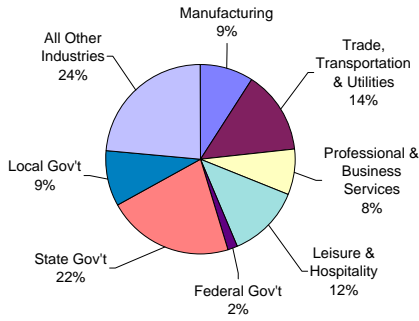
2006 Avg Wages By Industry-OES Survey Data

Industry	Avg. Hourly Wage
Total All Industries	\$17.65
Natural Resources and Mining	\$18.83
Construction	\$20.19
Manufacturing	\$18.92
Trade, Transportation & Utilities	\$16.46
Information	\$19.69
Financial Activities	\$20.77
Professional & Business Services	\$17.64
Education & Health Services	\$21.98
Leisure & Hospitality	\$10.21
Other Services	\$16.54
Government	\$23.32

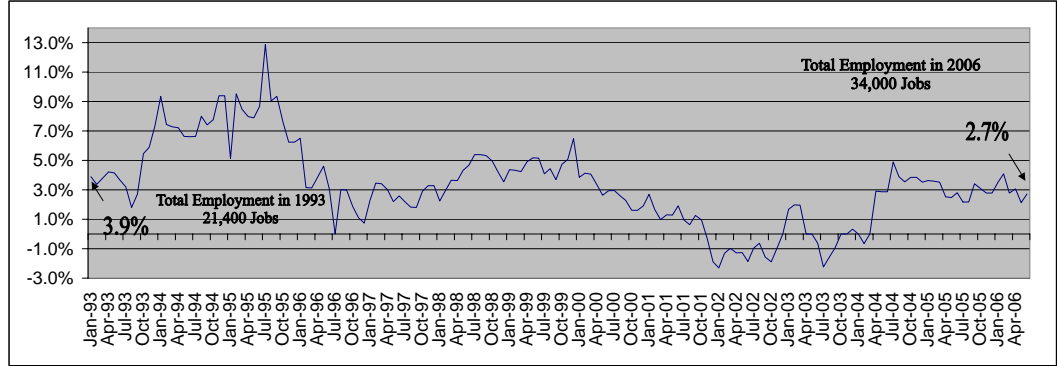
Employment data for current month is preliminary and previous month has been revised. All data subject to annual benchmark revisions.

*MSA = Metropolitan Statistical Area / Reno-Sparks MSA = Washoe County and Storey County

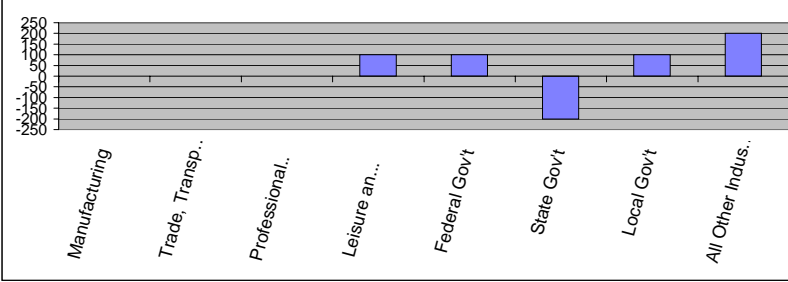
Carson City MSA Industry Composition



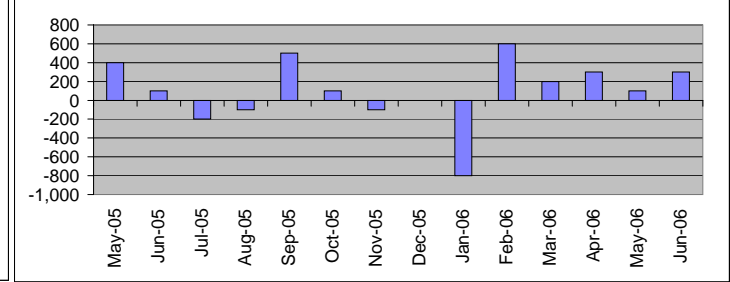
Annual Job Growth Rate for Total NonAgricultural Employment



Monthly Change by Industry



Monthly Change In Total Non-Ag. Employment



Carson City MSA Employment By Industry

	JUN 2006	MAY 2006	JUN 2005	Monthly Change		Annual Change	
				Total	%	Total	%
Total All Industries	34,000	33,700	33,100	300	0.9%	900	2.7%
Goods Producing	5,700	5,600	5,600	100	1.8%	100	1.8%
Manufacturing	3,100	3,100	3,200	0	0.0%	-100	-3.1%
Services Producing	28,300	28,100	27,500	200	0.7%	800	2.9%
Private Services Producing	17,100	16,900	16,500	0	0.0%	400	9.1%
Trade, Transportation & Utilities	4,800	4,800	4,400	100	2.7%	400	11.8%
Retail	3,800	3,700	3,400	100	2.7%	400	11.8%
Professional & Business Services	2,700	2,700	2,500	0	0.0%	200	8.0%
Leisure & Hospitality	4,200	4,100	4,100	100	2.4%	100	2.4%
Government	11,200	11,200	11,000	0	0.0%	200	1.8%
Federal	600	500	600	100	20.0%	0	0.0%
State	7,400	7,600	7,300	-200	-2.6%	100	1.4%
Local	3,200	3,100	3,100	100	3.2%	100	3.2%

Size Class of Industries - Dec 2005 (Non-Government Worksites)

Size Class	Employees Per Worksite	Number of Worksites	Employment in Size Class	% of Total Employment
9	1000+	0	0	0.0%
8	500-999	1	520	2.3%
7	250-499	3	1,285	5.8%
6	100-249	23	3,778	17.0%
5	50-99	47	3,428	15.5%
4	20-49	170	5,100	23.0%
3	10-19	245	3,236	14.6%
2	5-9	387	2,623	11.8%
1	0-4	1,311	2,208	10.0%
Total		2,187	22,178	100.0%

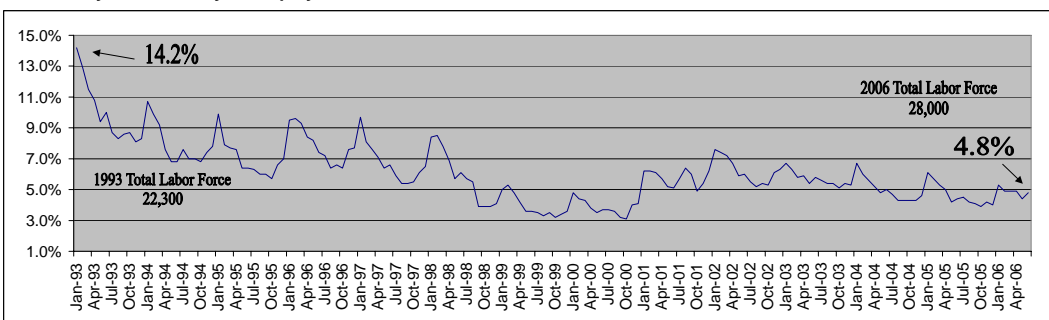
Largest Private Employers - Dec 2005

Employer	Employees	Industry
CASINO FANDANGO	500-599	Casinos
CARSON CITY NUGGET	400-499	Casinos
WAL-MART STORES, INC.	400-499	Warehouse Clubs
CHROMALLOY NEVADA	300-399	Aircraft Engines
HEALTHSOUTH	200-299	Spec. Therapists
COSTCO WHOLESALE CORP	200-299	Warehouse Clubs
HARLEY-DAVIDSON CREDIT CORP	200-299	Sales Financing
PINON PLAZA RESORT	200-299	Casino Hotels
CARSON STATION HOTEL CASINO	200-299	Casino Hotels
PCC STRUCTURALS - CARSON	200-299	Steel Foundries
MISSION INDUSTRIES	200-299	Linen Supply
SLOTWORLD INC	100-199	Casinos
WESTERN TEMPORARY SVCS. USA	100-199	Temporary Help
LOWE'S	100-199	Home Centers
GREATBATCH-SIERRA, INC.	100-199	Electronics Mfg.

Labor Force and Unemployment

	JUN 2006	MAY 2006	JUN 2005	Monthly Change		Annual Change	
				Total	%	Total	%
Total Labor Force	28,000	27,800	27,400	200	0.7%	600	2.2%
Unemployment	1,300	1,200	1,200	100	8.3%	100	8.3%
Unemployment Rate	4.8%	4.4%	4.4%	*	*	*	*
Total Employment	26,700	26,600	26,200	100	0.4%	500	1.9%

Carson City MSA Monthly Unemployment Rates 1993 to Current



2006 Avg Wages By Industry-OES Survey Data

Industry	Avg. Hourly Wage
Total All Industries	\$18.25
Natural Resources and Mining	N/A
Construction	\$19.19
Manufacturing	\$17.62
Trade, Transportation & Utilities	\$16.24
Information	\$17.76
Financial Activities	\$15.77
Professional & Business Services	\$19.01
Education & Health Services	\$19.69
Leisure & Hospitality	\$9.37
Other Services	\$13.80
Government	\$23.64

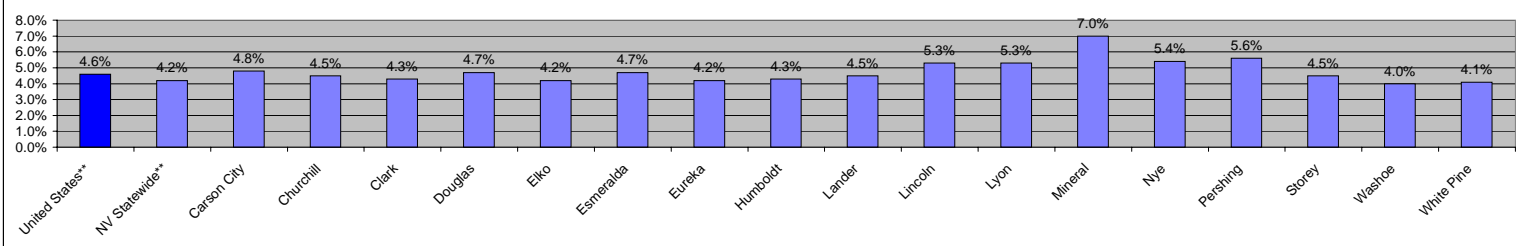
Employment data for current month is preliminary and previous month has been revised. All data subject to annual benchmark revisions.

*MSA = Metropolitan Statistical Area / Carson City MSA = Carson City

Nevada County Employment and Unemployment Summary

June 2006

Current Unemployment Rates By County



Total Labor Force - June 2006

	Total Labor Force	# of Employed	# of Unemployed	Unemp. Rate
Nevada**	1,276,800	1,221,900	54,900	4.2%
Carson City	28,080	26,730	1,350	4.8%
Churchill	13,320	12,720	600	4.5%
Clark	905,790	866,960	38,830	4.3%
Douglas	22,760	21,690	1,070	4.7%
Elko	25,140	24,090	1,050	4.2%
Esmeralda	470	450	20	4.7%
Eureka	730	700	30	4.2%
Humboldt	8,310	7,950	360	4.3%
Lander	2,970	2,840	130	4.5%
Lincoln	1,590	1,510	80	5.3%
Lyon	21,700	20,550	1,150	5.3%
Mineral	2,130	1,980	150	7.0%
Nye	17,410	16,470	940	5.4%
Pershing	2,570	2,430	140	5.6%
Storey	2,220	2,120	100	4.5%
Washoe	217,140	208,380	8,760	4.0%
White Pine	4,520	4,330	190	4.1%
Elko Micropolitan Area***	25,870	24,790	1,080	4.2%

Total Labor Force - June 2005

	Total Labor Force	# of Employed	# of Unemployed	Unemp. Rate
Nevada**	1,223,000	1,172,100	50,900	4.1%
Carson City	27,420	26,210	1,210	4.4%
Churchill	12,680	12,170	510	4.0%
Clark	866,170	830,080	36,090	4.2%
Douglas	22,350	21,360	990	4.4%
Elko	24,130	23,200	930	3.9%
Esmeralda	460	440	20	4.6%
Eureka	700	670	30	3.6%
Humboldt	8,030	7,720	310	3.8%
Lander	2,770	2,660	110	4.1%
Lincoln	1,650	1,560	90	5.2%
Lyon	20,570	19,540	1,030	5.0%
Mineral	2,100	1,980	120	5.8%
Nye	16,430	15,510	920	5.6%
Pershing	2,520	2,390	130	5.2%
Storey	2,130	2,040	90	4.1%
Washoe	208,410	200,290	8,120	3.9%
White Pine	4,510	4,330	180	4.0%
Elko Micropolitan Area***	24,830	23,870	960	3.9%

Labor Force Change (June 2005 to June 2006)

	Change In Total Labor Force		Change In Number of Employed		Change In Number of Unemployed	
	Number	Percent	Number	Percent	Number	Percent
Nevada**	53,800	4.4%	49,800	4.2%	4,000	7.9%
Carson City	660	2.4%	520	2.0%	140	11.6%
Churchill	640	5.0%	550	4.5%	90	17.6%
Clark	39,620	4.6%	36,880	4.4%	2,740	7.6%
Douglas	410	1.8%	330	1.5%	80	8.1%
Elko	1,010	4.2%	890	3.8%	120	12.9%
Esmeralda	10	2.2%	10	2.3%	0	0.0%
Eureka	30	4.3%	30	4.5%	0	0.0%
Humboldt	280	3.5%	230	3.0%	50	16.1%
Lander	200	7.2%	180	6.8%	20	18.2%
Lincoln	-80	-3.6%	-50	-3.2%	-10	-11.1%
Lyon	1,130	5.5%	1,010	5.2%	120	11.7%
Mineral	30	1.4%	0	0.0%	30	25.0%
Nye	980	6.0%	960	6.2%	20	2.2%
Pershing	50	2.0%	40	1.7%	10	7.7%
Storey	90	4.2%	80	3.9%	10	11.1%
Washoe	8,730	4.2%	8,090	4.0%	640	7.9%
White Pine	10	0.2%	0	0.0%	10	5.6%
Elko Micropolitan Area***	1,040	4.2%	920	3.9%	120	12.5%

Employment by Area - 4th Quarter 2005 (Oct-Dec) Average

	4th Qtr 2005		4th Qtr 2004		Total Change		% Change	
	Employment	Payrolls	Employment	Payrolls	Employment	Payrolls	Employment	Payrolls
Nevada	1,247,483	1,183,569	63,914	54,900	5.4%	5.4%		
Carson City	32,359	32,071	288	288	0.9%	0.9%		
Churchill	8,599	8,388	211	211	2.5%	2.5%		
Clark	891,022	837,413	53,609	47,830	6.4%	6.4%		
Douglas	21,622	21,598	24	24	0.1%	0.1%		
Elko	20,200	19,291	909	909	4.7%	4.7%		
Esmeralda	233	220	13	13	5.9%	5.9%		
Eureka	3,878	3,599	279	279	7.8%	7.8%		
Humboldt	7,736	7,339	397	397	5.4%	5.4%		
Lander	2,205	1,772	433	433	24.4%	24.4%		
Lincoln	1,277	1,267	10	10	0.8%	0.8%		
Lyon	12,618	11,456	1,162	1,162	10.1%	10.1%		
Mineral	1,736	1,655	81	81	4.9%	4.9%		
Nye	12,404	11,410	994	994	8.7%	8.7%		
Pershing	1,818	1,882	-64	-64	-3.4%	-3.4%		
Storey	1,315	1,050	265	265	25.2%	25.2%		
Washoe	216,439	210,913	5,526	5,526	2.6%	2.6%		
White Pine	3,807	3,658	149	149	4.1%	4.1%		

Employment By Industry - 4th Quarter 2005 (Oct-Dec) Average

	Nat. Resources & Mining	Const	Manuf	Trade, Transp. & Utilities	Information	Financial Activities	Profess. & Bus. Svcs	Education & Health Svcs	Leisure and Hospitality	Other Services	Gov't
Nevada	13,347	140,160	48,130	216,207	14,340	65,930	145,803	84,377	334,603	27,010	144,963
Carson City	*	2,380	3,091	4,852	284	1,721	2,462	2,399	3,974	878	10,267
Churchill	265	789	507	1,713	128	302	1,016	790	1,052	148	1,881
Clark	529	106,002	25,465	154,673	10,519	50,897	108,703	58,281	266,026	19,137	89,760
Douglas	176	2,183	1,753	2,795	197	865	1,572	1,054	8,363	350	2,289
Elko	1,941	1,525	178	3,547	178	587	867	1,099	6,139	456	3,670
Esmeralda	69	17	*	17	*	*	*	*	*	*	102
Eureka	3,559	*	*	51	*	*	*	*	39	10	171
Humboldt	2,081	427	322	1,462	80	113	307	270	1,142	149	1,381
Lander	665	*	*	411	*	23	38	34	204	6	511
Lincoln	30	22	*	211	22	50	*	20	88	*	597
Lyon	682	1,521	2,401	2,601	26	290	659	609	1,515	236	2,073
Mineral	74	32	12	134	*	33	*	53	261	11	585
Nye	1,090	1,231	297	1,707	98	354	2,839	581	2,133	206	1,853
Pershing	432	*	53	186	10	29	21	40	166	19	742
Storey	84	105	289	307	*	16	47	7	156	138	185
Washoe	476	23,702	13,826	46,175	2,802	10,998	27,717	19,684	38,439	4,957	27,431
White Pine	734	141	34	533	30	95	88	145	492	56	1,459

Hours and Earnings

	Production Workers (in 000's)			Average Weekly Earnings			Average Weekly Hours			Average Hourly Earnings		
	JUN 2006	JUN 2005	MAY 2006	JUN 2006	JUN 2005	MAY 2006	JUN 2006	JUN 2005	MAY 2006	JUN 2006	JUN 2005	MAY 2006
Nevada	118,100	105,900	116,700	\$834.10	\$812.82	\$825.32	38.0	38.0	37.6	\$21.95	\$21.39	\$21.95
Construction	118,100	105,900	116,700	\$834.10	\$812.82	\$825.32	38.0	38.0	37.6	\$21.95	\$21.39	\$21.95
Manufacturing	36,900	35,800	36,600	\$613.66	\$588.64	\$616.06	39.9	39.4	39.9	\$15.38	\$14.94	\$15.44
Durable Goods	25,900	25,100	25,700	\$625.20	\$594.32	\$627.25	40.0	39.1	39.8	\$15.63	\$15.20	\$15.76
Non-durable Goods	11,000	10,700	10,900	\$589.04	\$575.03	\$589.07	39.8	40.1	40.1	\$14.80	\$14.34	\$14.69
Wholesale Trade	32,200	30,700	32,200	\$605.38	\$593.30	\$605.76	35.8	35.4	36.1	\$16.91	\$16.76	\$16.78
Retail Trade	118,100	112,300	117,100	\$430.34	\$429.32	\$433.07	34.1	34.1	34.1	\$12.62	\$12.59	\$12.70
Las Vegas-Paradise MSA	89,000	80,800	88,100	\$892.40	\$864.83	\$885.40	38.8	39.4	38.0	\$23.00	\$21.95	\$23.30
Construction	89,000	80,800	88,100	\$892.40	\$864.83	\$885.40	38.8	39.4	38.0	\$23.00	\$21.95	\$23.30
Manufacturing	20,500	19,500	20,500	\$597.60	\$592.91	\$592.11	40.0	39.9	39.5	\$14.94	\$14.86	\$14.99
Wholesale Trade	19,100	18,000	19,100	\$641.38	\$626.20	\$638.33	38.2	37.7	38.5	\$16.79	\$16.61	\$16.58
Retail Trade	84,700	80,200	84,700	\$445.56	\$456.90	\$454.99	34.3	35.2	34.6	\$12.99	\$12.98	\$13.15

Seasonally Adjusted Employment (Statewide Only)

Employment In Thousands	May-05	Jun-05	Jul-05	Aug-05	Sep-05	Oct-05	Nov-05	Dec-05	Jan-06	Feb-06	Mar-06	Apr-06	May-06	Jun-06
Total All Industries	1217.9	1223.8	1229.2	1230.5	1239.3	1247.6	1250.7	1256.6	1258.1	1264.5	1269.4	1279.2	1282.6	1288.3
Natural Resources and Mining	10.5	10.6	10.6	10.7	10.8	11.0	11.2	11.2	11.2	11.2	11.1	11.1	11.2	11.1
Construction	133.3	133.8	136.1	137.4	139.3	141.8	142.1	143.9	144.1	145.8	146.2	147.3	147.4	148.4
Manufacturing	47.5	47.7	47.7	47.5	48.1	48.3	48.4	48.4	48.6	48.7	48.8	49.1	49.2	49.4
Trade, Transportation & Utilities	213.8	214.5	216.1	216.6	218.3	219.1	219.4	219.7	220.1	221.8	223.9	225.4	226.8	227.4
Retail	130.6	131.0	132.4	132.7	133.6	133.9	134.0	134.2	135.7	136.7	137.6	137.8	138.1	138.5
Information	15.4	14.7	14.5	14.4	14.1	14.4	14.4	14.4	14.5	14.4	14.3	14.5	14.8	14.6
Financial Activities	64.6	65.0	65.0	65.5	66.0	66.7	66.9	67.3	67.5	67.6	67.4	67.6	67.9	68.1
Professional & Business Services	143.6	144.6	145.1	145.2	146.0	147.1	147.9	149.3	150.7	151.0	153.3	156.2	157.1	158.9
Education & Health Services	84.2	84.7	84.8	84.9	85.0	85.5	85.7	86.3	86.4	87.0	87.3	87.5	87.6	88.2
Leisure & Hospitality	327.8	330.5	330.8	330.1	332.5	332.9	333.2	333.8	333.7	334.5	334.4	336.1	336.0	337.2
Casino Hotels and Gaming	215.3	217.2	217.0	216.6	217.4	217.8	217.9	218.4	218.7	219.5	217.0	217.1	216.7	217.6
Other Services	33.8	34.1	34.6	34.8	35.1	35.7	35.9	36.2	35.4	35.9	36.1	36.5	36.5	36.9
Government	143.4	143.6	143.9	143.4	144.1	145.1	145.6	146.1	145.9	146.6	146.6	147.9	148.1	148.1

Employment data for current month is preliminary and previous month has been revised. All data subject to annual benchmark revisions.
 * Indicates No Employment or Data Suppressed Due To Confidentiality. **The United States and Nevada statewide unemployment rates are seasonally adjusted.
 *** Elko Micropolitan Statistical Area = Elko and Eureka Counties

State of Nevada
Department of Employment, Training & Rehabilitation
Research & Analysis Bureau
500 E. Third Street
Carson City, NV 89713-0001

Nevada Economy In Brief

The Nevada Economy in Brief provides a wealth of Nevada workforce and economic information and is published monthly by the Nevada Department of Employment, Training and Rehabilitation / Research and Analysis Bureau. Material contained in this publication is produced in cooperation with the U.S. Department of Labor (Bureau of Labor Statistics and the Employment and Training Administration) and may be reproduced without permission. Please credit Nevada Department of Employment, Training and Rehabilitation. For additional workforce or other economic information, a free subscription to the Nevada Economy in Brief, or to change your mailing address, please contact the Research and Analysis Bureau.

Phone (775) 684-0450
Fax (775) 684-0342
E-mail detrlmi@nvdetr.org

Websites
www.nevadaworkforce.com
www.nevadajobconnect.com
www.nvdetr.org



Nevada

Economy In Brief

May 2006

The rise in unemployment reported in April seems to have been a temporary phenomenon. The ranks of the unemployed declined in each of Nevada's major labor markets in May and the seasonally adjusted statewide unemployment rate declined by one-tenth of a percentage point to 4.0 percent. The unemployment rates in the state's three metropolitan areas, which are not seasonally adjusted, fell by approximately one-half percentage point over the month. Nevada's over-the-year rate of job growth rose slightly to 5.2 percent. Growth exceeded 5 percent in the Las Vegas and Reno areas, hardly an unusual occurrence in southern Nevada but a relative rarity in the northern city, at least until this year.

Nevada's rebound came despite a period of turmoil in U.S. and world financial markets. Facing the threats of inflation and rising interest rates, stock markets throughout the world suffered sharp declines beginning in early May. The major U.S. stock indices fell 7 to 10 percent and some international markets fell even further. Commodity prices, which usually rise during inflationary

Economic Indicators

UNEMPLOYMENT RATES MAY 2006

NEVADA (SA)*	4.0%
LAS VEGAS-PARADISE MSA	3.6%
RENO-SPARKS MSA	3.6%
CARSON CITY MSA	4.4%
ELKO MICROPOLITAN AREA	3.4%
UNITED STATES (SA)*	4.6%
CALIFORNIA (SA)*	5.0%

*(SA) - Seasonally Adjusted

JOB GROWTH (LAST 12 MONTHS)

NEVADA	5.2%
LAS VEGAS-PARADISE MSA	5.6%
RENO-SPARKS MSA	5.1%
CARSON CITY MSA	2.4%
UNITED STATES	1.4%
CALIFORNIA	1.6%

CONSUMER PRICE INDEX (1yr %Chg)

UNITED STATES	4.2%
---------------	------

GROSS GAMING WIN (% CHANGE)

APR 2005 - APR 2006

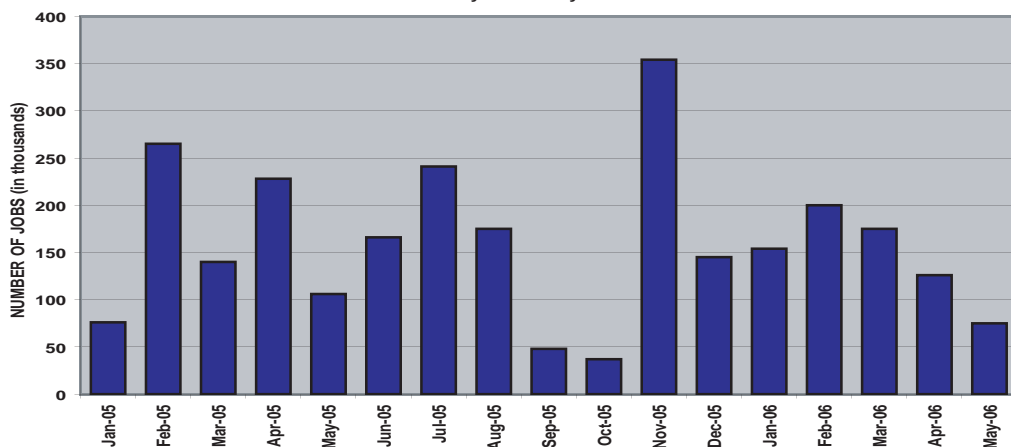
NEVADA	12.7%
CLARK COUNTY	13.9%
WASHOE COUNTY	5.4%

TAXABLE SALES (% CHANGE)

MAR 2005 - MAR 2006

NEVADA	4.1%
CLARK COUNTY	5.7%
WASHOE COUNTY	-1.3%

U.S. EMPLOYMENT CHANGE BY MONTH
January 2005 - May 2006



periods, also plummeted. Gold fell from about \$730 per ounce to \$570 per ounce in a matter of weeks. Copper fell from \$3.90 per pound to \$3.10. Crude oil, although slightly off its recent high, remained near \$70 per barrel.

The decline in metals prices should not signal trouble for Nevada's mining industry, however. Gold and copper prices have increased sharply over the past year. In June 2005 copper was trading near \$1.50 per pound and gold was trading below \$450 per ounce, so the current prices are still high from an historical perspective. Most Nevada mining companies should have sufficient margins to remain active and profitable.

(Continued on Page2)

In This Issue

Nevada Economy In Brief.....	1&2
Housing & Interest Rates.....	2

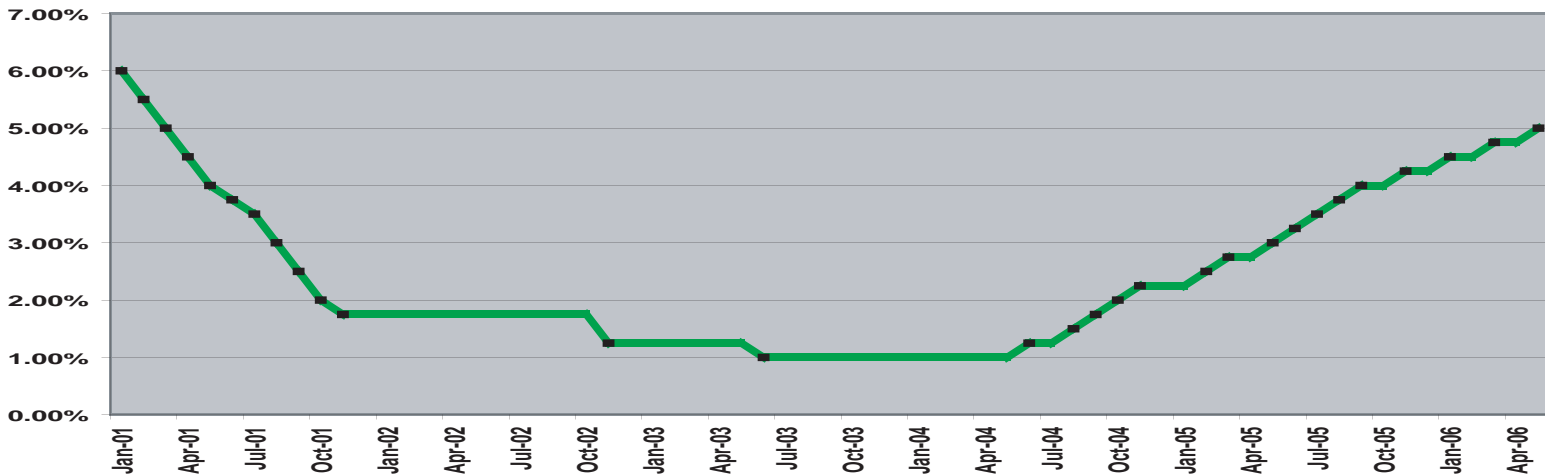
Employment/Unemployment Data Nevada Statewide.....	3
Las Vegas-Paradise MSA.....	4
Reno-Sparks MSA.....	5
Carson City MSA.....	6
Nevada County Summary.....	7

Contact Information.....	8
--------------------------	---

(Note: Data for June 2006 will be released on July 21, 2006)

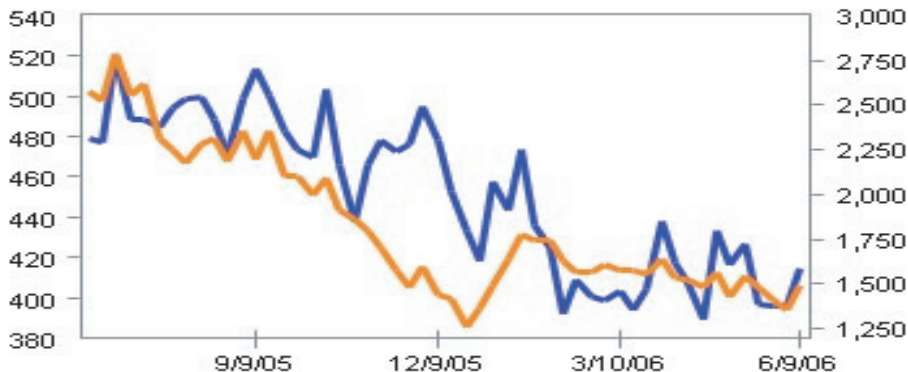
While the downturn in the financial markets may be somewhat overblown, there are signs that the U.S. economy is slowing. Employment gains, which averaged 165,000 per month nationally in 2005, have averaged 125,000 per month since March. Housing starts have declined sharply for three consecutive months, and mortgage applications for both new and refinanced loans have been in a downward trend for the past year. Numerous inflation measures have been on the rise and Federal Reserve Board members have been very vocal about the need to keep inflation under control. The Fed has used its primary inflation-fighting tool—higher interest rates—16 times in the past two years and is likely to use it some more.

**FEDERAL FUNDS RATE
January 2001 - Present**



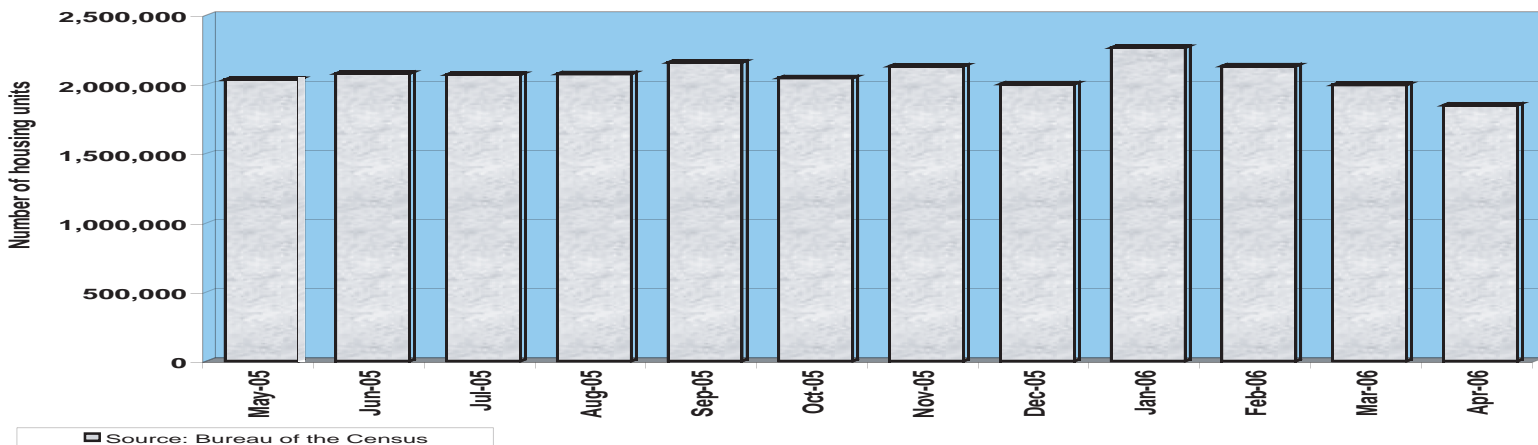
So far, the Nevada economy has felt only minimal effects of the national turmoil. The housing markets in the Reno and Las Vegas areas have cooled from the unsustainable pace of the past two years but have certainly not collapsed. Tourism and gaming figures remain strong. Taxable sales cooled to a 4.1 percent over-the-year gain in March, but some of the slowdown was attributable to poor weather in the Reno-Carson City-Douglas County corridor during the month. Nevada is not immune to national events, however, so vigilance is urged.

**MBA Mortgage Applications Index, 3/16/90=100, SA
Blue=purchase (L), orange=refi (R)**



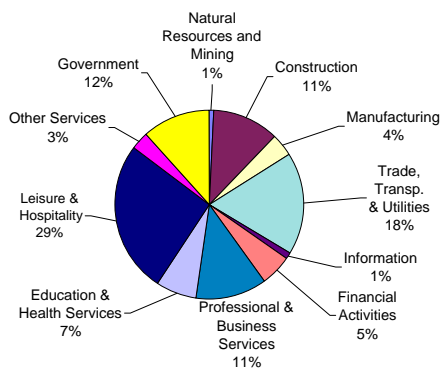
Source: Dismal.com

**U.S. HOUSING STARTS
May 2005 - April 2006**

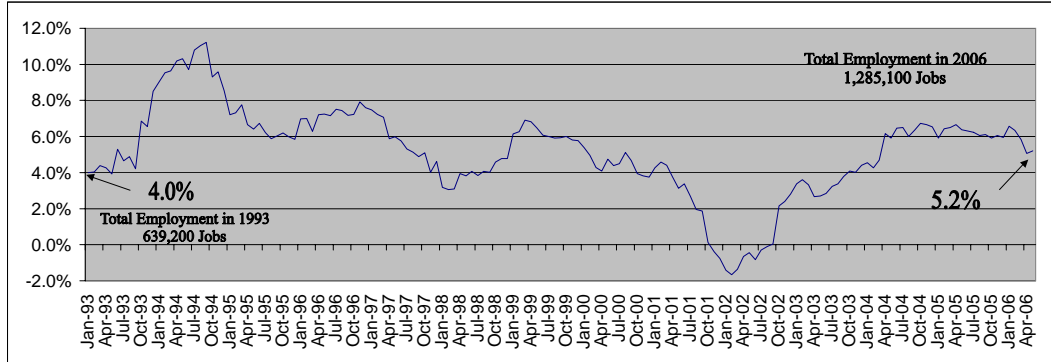


Source: Bureau of the Census

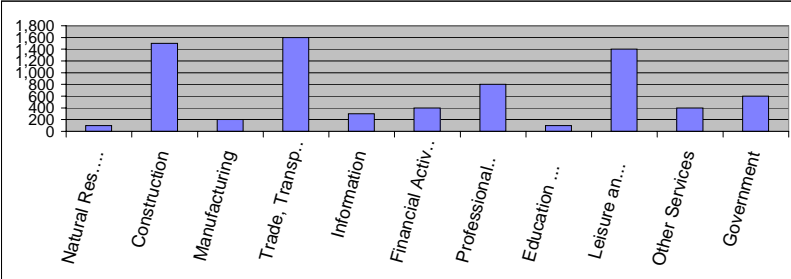
Nevada Industry Composition



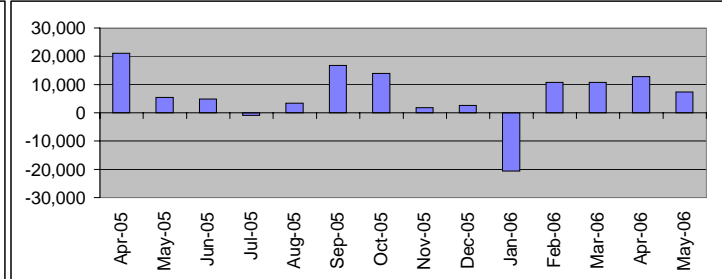
Annual Job Growth Rate for Total NonAgricultural Employment



Monthly Change by Industry



Monthly Change In Total Non-Ag. Employment



Nevada Employment By Industry

	MAY 2006	APR 2006	MAY 2005	Monthly Change		Annual Change	
				Total	%	Total	%
Total All Industries	1,285,100	1,277,700	1,221,500	7,400	0.6%	63,600	5.2%
Natural Resources and Mining	11,100	11,000	10,400	100	0.9%	700	6.7%
Construction	147,700	146,200	132,800	1,500	1.0%	14,900	11.2%
Manufacturing	49,100	48,900	47,500	200	0.4%	1,600	3.4%
Trade, Transportation & Utilities	224,100	222,500	212,000	1,600	0.7%	12,100	5.7%
Wholesale	38,900	38,700	37,100	200	0.5%	1,800	4.9%
Retail	136,300	135,500	128,900	800	0.6%	7,400	5.7%
Trans, Warehousing and Utilities	48,900	48,300	46,000	600	1.2%	2,900	6.3%
Information	14,800	14,500	15,400	300	2.1%	-600	-3.9%
Financial Activities	67,800	67,400	64,400	400	0.6%	3,400	5.3%
Finance and Insurance	41,700	41,500	39,600	200	0.5%	2,100	5.3%
Professional & Business Services	156,600	155,800	143,400	800	0.5%	13,200	9.2%
Education & Health Services	88,000	87,900	84,500	100	0.1%	3,500	4.1%
Health Care and Social Assistance	81,400	81,400	78,600	0	0.0%	2,800	3.6%
Leisure & Hospitality	337,600	336,200	330,000	1,400	0.4%	7,600	2.3%
Casino Hotels and Gaming	218,400	217,700	216,800	700	0.3%	1,600	0.7%
Food Services and Drinking Places	90,800	90,100	85,800	700	0.8%	5,000	5.8%
Other Services	36,900	36,500	34,200	400	1.1%	2,700	7.9%
Government	151,400	150,800	146,900	600	0.4%	4,500	3.1%

Size Class of Industries - Sep 2005 (Non-Government Worksites)

Size Class	Employees Per Worksite	Number of Worksites	Employment in Size Class	% of Total Employment
9	1000+	91	208,359	19.0%
8	500-999	141	97,541	8.9%
7	250-499	245	85,452	7.8%
6	100-249	1,069	162,106	14.8%
5	50-99	1,914	132,575	12.1%
4	20-49	5,735	173,158	15.8%
3	10-19	8,026	109,063	9.9%
2	5-9	11,332	75,824	6.9%
1	0-4	37,754	54,369	4.9%
Total		66,307	1,098,447	100.0%

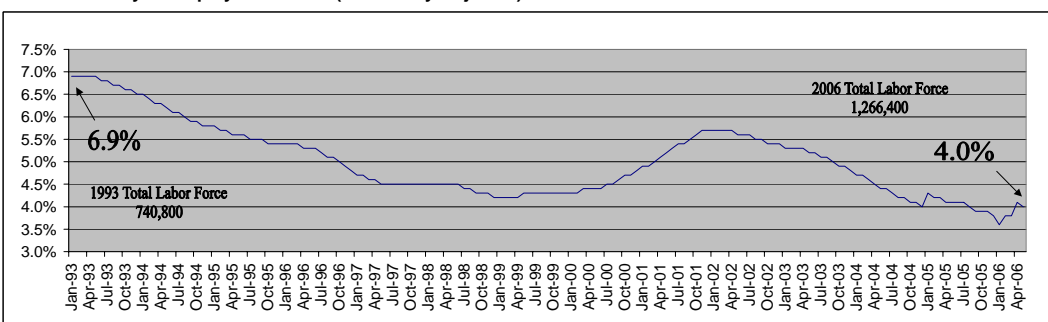
Nevada's Largest Private Employers - Sep 2005

Employer	Employees	Industry
BELLAGIO, LLC	9500-9900	Casino Hotels
WYNN LAS VEGAS, LLC	8500-8999	Casino Hotels
MGM GRAND HOTEL/CASINO	8000-8499	Casino Hotels
MANDALAY BAY RESORT AND CASINO	8000-8499	Casino Hotels
MIRAGE CASINO-HOTEL, THE	5500-5999	Casino Hotels
CAESARS PALACE	4500-4999	Casino Hotels
RIO SUITE HOTEL & CASINO	4000-4499	Casino Hotels
LUXOR	3500-3999	Casino Hotels
EXCALIBUR HOTEL & CASINO	3500-3999	Casino Hotels
FLAMINGO HILTON CORPORATION	3500-3999	Casino Hotels
BALLY'S & PARIS CASINO HOTELS	3500-3999	Casino Hotels
TREASURE ISLAND AT THE MIRAGE	3500-3999	Casino Hotels
HARRAH'S LAS VEGAS, INC	3000-3499	Casino Hotels
CIRCUS CIRCUS CASINOS, INC.-LV	3000-3499	Casino Hotels
ALADDIN RESORT & CASINO	3000-3499	Casino Hotels

Labor Force and Unemployment

	MAY 2006	APR 2006	MAY 2005	Monthly Change		Annual Change	
				Total	%	Total	%
Total Labor Force	1,266,400	1,262,400	1,208,800	4,000	0.3%	57,600	4.8%
Unemployment	47,000	52,400	46,700	-5,400	-10.3%	300	0.6%
Unemployment Rate	3.7%	4.1%	3.9%	*	*	*	*
Unemployment Rate (SA)	4.0%	4.1%	4.1%	*	*	*	*
Total Employment	1,219,400	1,210,000	1,162,100	9,400	0.8%	57,300	4.9%

Nevada Monthly Unemployment Rates (Seasonally Adjusted) 1993 to Current

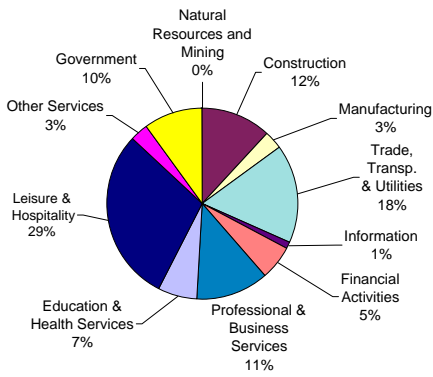


2005 Avg Wages By Industry-OES Survey Data

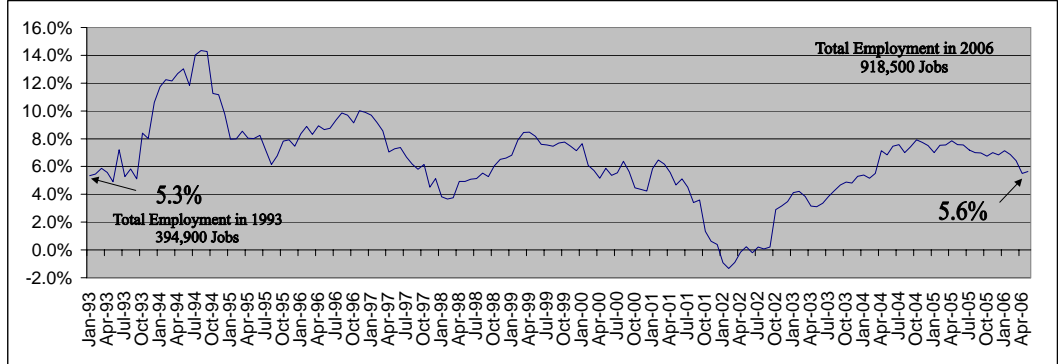
Industry	Avg. Hourly Wage
Total All Industries	\$16.63
Natural Resources and Mining	\$23.28
Construction	\$20.46
Manufacturing	\$18.14
Trade, Transportation & Utilities	\$15.13
Information	\$19.83
Financial Activities	\$18.96
Professional & Business Services	\$18.56
Education & Health Services	\$20.72
Leisure & Hospitality	\$11.36
Other Services	\$14.77
Government	\$22.79

Employment data for current month is preliminary and previous month has been revised. All data subject to annual benchmark revisions.
 Note: The statewide unemployment rate is seasonally adjusted

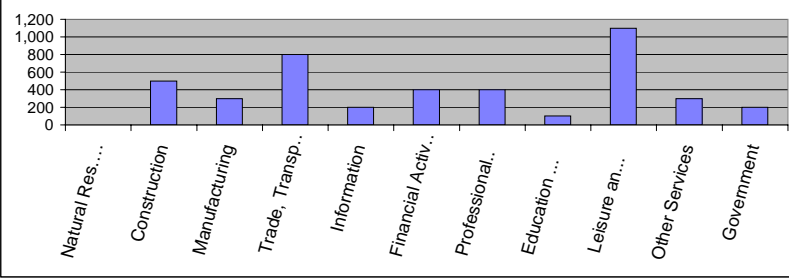
Las Vegas-Paradise MSA Industry Composition



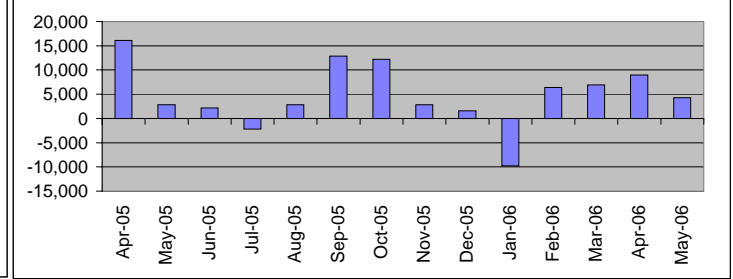
Annual Job Growth Rate for Total NonAgricultural Employment



Monthly Change by Industry



Monthly Change In Total Non-Ag. Employment



Las Vegas-Paradise MSA Employment By Industry

	MAY 2006	APR 2006	MAY 2005	Monthly Change		Annual Change	
				Total	%	Total	%
Total All Industries	918,500	914,200	869,400	4,300	0.5%	49,100	5.6%
Natural Resources and Mining	400	400	400	0	0.0%	0	0.0%
Construction	110,300	109,800	99,400	500	0.5%	10,900	11.0%
Manufacturing	26,200	25,900	24,800	300	1.2%	1,400	5.6%
Trade, Transportation & Utilities	154,000	153,200	146,100	800	0.5%	7,900	5.4%
Wholesale	23,400	23,300	21,900	100	0.4%	1,500	6.8%
Retail	96,500	96,000	92,000	500	0.5%	4,500	4.9%
Trans, Warehousing and Utilities	34,100	33,900	32,200	200	0.6%	1,900	5.9%
Information	10,700	10,500	11,000	200	1.9%	-300	-2.7%
Financial Activities	52,100	51,700	48,700	400	0.8%	3,400	7.0%
Finance and Insurance	31,500	31,300	29,600	200	0.6%	1,900	6.4%
Professional & Business Services	112,900	112,500	103,700	400	0.4%	9,200	8.9%
Education & Health Services	60,600	60,500	57,700	100	0.2%	2,900	5.0%
Health Care and Social Assistance	55,700	55,600	53,300	100	0.2%	2,400	4.5%
Leisure & Hospitality	272,600	271,500	265,000	1,100	0.4%	7,600	2.9%
Casino Hotels and Gaming	180,000	179,400	177,200	600	0.3%	2,800	1.6%
Food Services and Drinking Places	70,800	70,400	67,100	400	0.6%	3,700	5.5%
Other Services	25,900	25,600	23,700	300	1.2%	2,200	9.3%
Government	92,800	92,600	88,900	200	0.2%	3,900	4.4%

Size Class of Industries - Sep 2005 (Non-Government Worksites)

Size Class	Employees Per Worksite	Number of Worksites	Employment in Size Class	% of Total Employment
9	1000+	73	177,144	22.3%
8	500-999	111	77,286	9.7%
7	250-499	185	63,929	8.0%
6	100-249	752	114,097	14.4%
5	50-99	1,337	92,518	11.6%
4	20-49	3,875	117,791	14.8%
3	10-19	5,162	70,287	8.8%
2	5-9	7,169	48,032	6.0%
1	0-4	23,341	33,222	4.2%
Total		42,005	794,306	100.0%

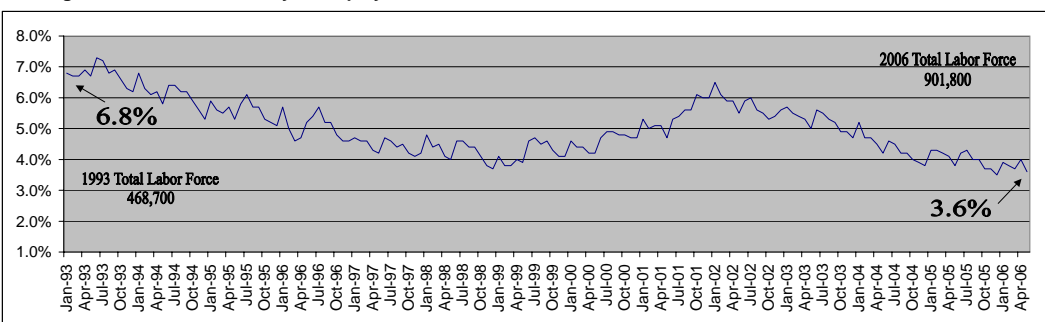
Largest Private Employers - Sep 2005

Employer	Employees	Industry
BELLAGIO, LLC	9500-9900	Casino Hotels
WYNN LAS VEGAS, LLC	8500-8999	Casino Hotels
MGM GRAND HOTEL/CASINO	8000-8499	Casino Hotels
MANDALAY BAY RESORT AND CASINO	8000-8499	Casino Hotels
MIRAGE CASINO-HOTEL, THE	5500-5999	Casino Hotels
CAESARS PALACE	4500-4999	Casino Hotels
RIO SUITE HOTEL & CASINO	4000-4499	Casino Hotels
LUXOR	3500-3999	Casino Hotels
EXCALIBUR HOTEL & CASINO	3500-3999	Casino Hotels
FLAMINGO HILTON CORPORATION	3500-3999	Casino Hotels
BALLY'S & PARIS CASINO HOTELS	3500-3999	Casino Hotels
TREASURE ISLAND AT THE MIRAGE	3500-3999	Casino Hotels
HARRAH'S LAS VEGAS, INC	3000-3499	Casino Hotels
CIRCUS CIRCUS CASINOS, INC.-LV	3000-3499	Casino Hotels
ALADDIN RESORT & CASINO	3000-3499	Casino Hotels

Labor Force and Unemployment

	MAY 2006	APR 2006	MAY 2005	Monthly Change		Annual Change	
				Total	%	Total	%
Total Labor Force	901,800	899,100	858,800	2,700	5.0%	43,000	5.0%
Unemployment	32,900	36,200	33,000	-3,300	-9.1%	-100	-0.3%
Unemployment Rate	3.6%	4.0%	3.8%	*	*	*	*
Total Employment	868,900	862,900	825,800	6,000	0.7%	43,100	5.2%

Las Vegas-Paradise MSA Monthly Unemployment Rates 1993 to Current



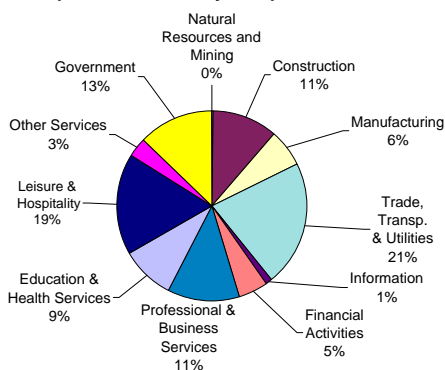
2005 Avg Wages By Industry-OES Survey Data

Industry	Avg. Hourly Wage
Total All Industries	\$16.56
Natural Resources and Mining	\$20.06
Construction	\$20.55
Manufacturing	\$18.41
Trade, Transportation & Utilities	\$14.93
Information	\$20.51
Financial Activities	\$18.98
Professional & Business Services	\$18.72
Education & Health Services	\$20.99
Leisure & Hospitality	\$11.75
Other Services	\$14.60
Government	\$24.18

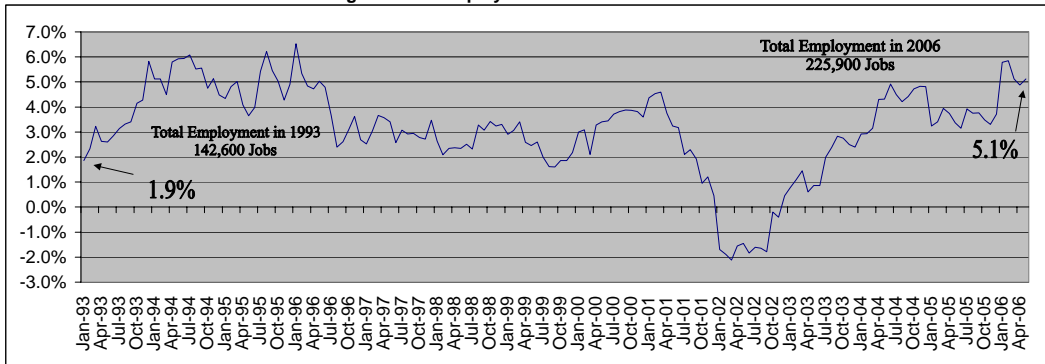
Employment data for current month is preliminary and previous month has been revised. All data subject to annual benchmark revisions.

*MSA = Metropolitan Statistical Area / Las Vegas-Paradise MSA = Clark County

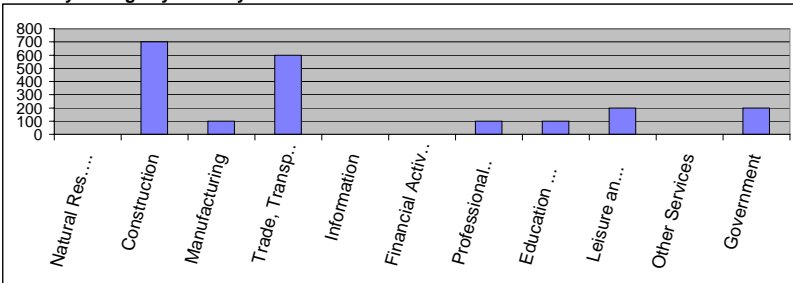
Reno-Sparks MSA Industry Composition



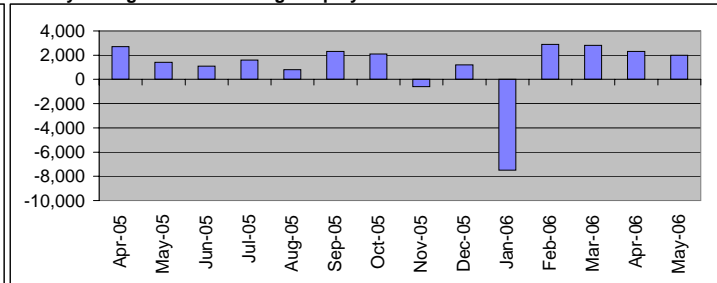
Annual Job Growth Rate for Total NonAgricultural Employment



Monthly Change by Industry



Monthly Change In Total Non-Ag. Employment



Reno-Sparks MSA Employment By Industry

	MAY 2006	APR 2006	MAY 2005	Monthly Change		Annual Change	
				Total	%	Total	%
Total All Industries	225,900	223,900	214,900	2,000	0.9%	11,000	5.1%
Natural Resources and Mining	400	400	400	0	0.0%	0	0.0%
Construction	25,500	24,800	22,300	700	2.8%	3,200	14.3%
Manufacturing	14,400	14,300	14,000	100	0.7%	400	2.9%
Trade, Transportation & Utilities	48,000	47,400	44,600	600	1.3%	3,400	7.6%
Wholesale	11,100	11,100	10,800	0	0.0%	300	2.8%
Retail	25,100	24,900	23,000	200	0.8%	2,100	9.1%
Trans, Warehousing and Utilities	11,800	11,400	10,800	400	3.5%	1,000	9.3%
Information	2,800	2,800	3,000	0	0.0%	-200	-6.7%
Financial Activities	11,000	11,000	10,900	0	0.0%	100	0.9%
Finance and Insurance	7,100	7,100	6,900	0	0.0%	200	2.9%
Professional & Business Services	28,000	27,900	25,500	100	0.4%	2,500	9.8%
Education & Health Services	20,200	20,100	19,700	100	0.5%	500	2.5%
Leisure & Hospitality	39,200	39,000	38,900	200	0.5%	300	0.8%
Casino Hotels and Gaming	22,600	22,400	23,600	200	0.9%	-1,000	-4.2%
Food Services and Drinking Places	12,800	12,700	11,900	100	0.8%	900	7.6%
Other Services	7,300	7,300	7,000	0	0.0%	300	4.3%
Government	29,100	28,900	28,600	200	0.7%	500	1.7%

Size Class of Industries - Sep 2005 (Non-Government Worksites)

Size Class	Employees Per Worksite	Number of Worksites	Employment in Size Class	% of Total Employment
9	1000+	13	23,426	12.3%
8	500-999	16	10,947	5.8%
7	250-499	40	13,998	7.4%
6	100-249	206	30,866	16.3%
5	50-99	383	26,488	14.0%
4	20-49	1,157	34,822	18.3%
3	10-19	1,682	22,914	12.1%
2	5-9	2,276	15,218	8.0%
1	0-4	7,380	11,136	5.9%
Total		13,153	189,815	100.0%

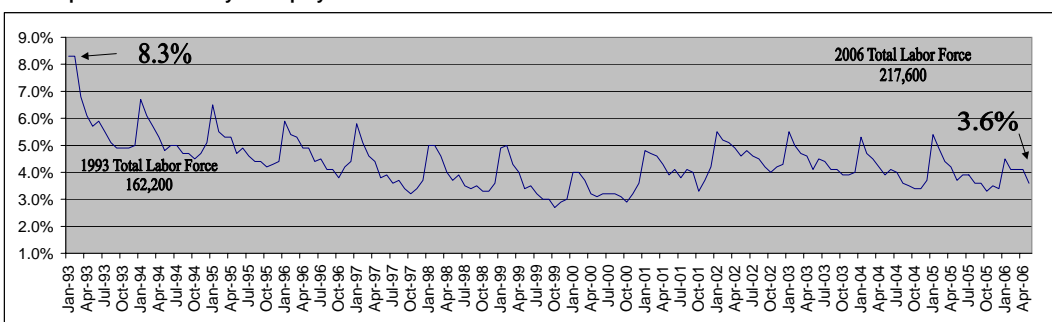
Largest Private Employers - Sep 2005

Employer	Employees	Industry
INTERNATIONAL GAME TECHNOLOGY	2500-2999	Misc. Manufac.
WASHOE MEDICAL CENTER, INC	2000-2499	Hospitals
SILVER LEGACY RESORT CASINO	2000-2499	Casino Hotels
PEPPERMILL HOTEL CASINO - RENO	1500-1999	Casino Hotels
RENO HILTON	1500-1999	Casino Hotels
ATLANTIS CASINO RESORT	1500-1999	Casino Hotels
ELDORADO HOTEL & CASINO	1500-1999	Casino Hotels
SPARKS NUGGET INC.	1500-1999	Casino Hotels
CIRCUS CIRCUS CASINOS, INC-RENO	1500-1999	Casino Hotels
ST. MARYS	1500-1999	Hospitals
HARRAH'S RENO	1000-1499	Casino Hotels
HIRE DYNAMICS	1000-1499	Temporary Help
UNITED PARCEL SERVICE	1000-1499	Couriers
QAL-NEVA, CLUB	900-999	Casino Hotels
Q&D CONSTRUCTION	900-999	Comm. Building

Labor Force and Unemployment

	MAY 2006	APR 2006	MAY 2005	Monthly Change		Annual Change	
				Total	%	Total	%
Total Labor Force	217,600	216,100	208,100	1,500	0.7%	9,500	4.6%
Unemployment	7,900	8,900	7,700	-1,000	-11.2%	200	2.6%
Unemployment Rate	3.6%	4.1%	3.7%	*	*	*	*
Total Employment	209,700	207,200	200,400	2,500	1.2%	9,300	4.6%

Reno-Sparks MSA Monthly Unemployment Rates 1993 to Current



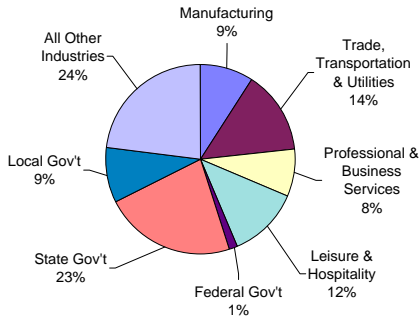
2005 Avg Wages By Industry-OES Survey Data

Industry	Avg. Hourly Wage
Total All Industries	\$17.10
Natural Resources and Mining	\$20.14
Construction	\$20.86
Manufacturing	\$18.38
Trade, Transportation & Utilities	\$15.99
Information	\$18.74
Financial Activities	\$19.81
Professional & Business Services	\$17.81
Education & Health Services	\$20.93
Leisure & Hospitality	\$10.09
Other Services	\$16.00
Government	\$22.10

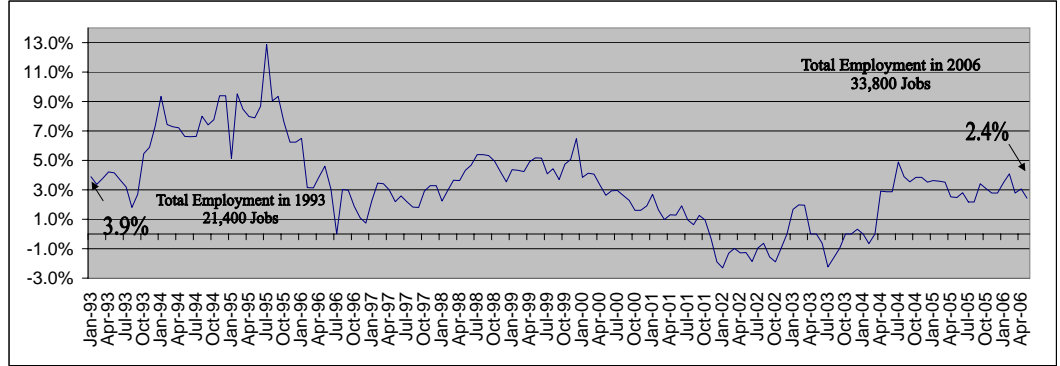
Employment data for current month is preliminary and previous month has been revised. All data subject to annual benchmark revisions.

*MSA = Metropolitan Statistical Area / Reno-Sparks MSA = Washoe County and Storey County

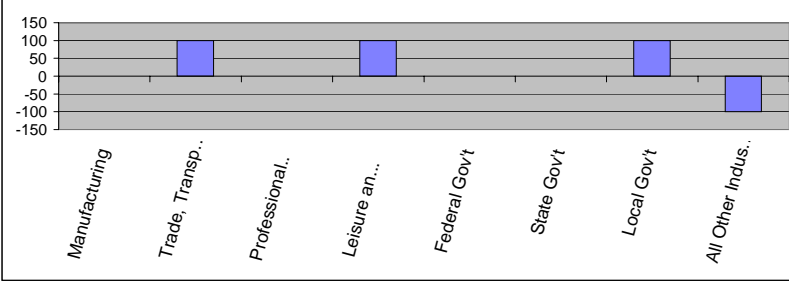
Carson City MSA Industry Composition



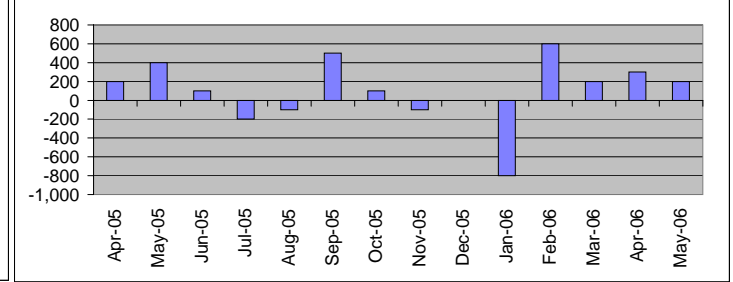
Annual Job Growth Rate for Total NonAgricultural Employment



Monthly Change by Industry



Monthly Change In Total Non-Ag. Employment



Carson City MSA Employment By Industry

	MAY 2006	APR 2006	MAY 2005	Monthly Change		Annual Change	
				Total	%	Total	%
Total All Industries	33,800	33,600	33,000	200	0.6%	800	2.4%
Goods Producing	5,600	5,600	5,500	0	0.0%	100	1.8%
Manufacturing	3,100	3,100	3,200	0	0.0%	-100	-3.1%
Services Producing	28,200	28,000	27,500	200	0.7%	700	2.5%
Private Services Producing	16,900	16,800	16,300	100	2.1%	400	9.1%
Trade, Transportation & Utilities	4,800	4,700	4,400	0	0.0%	400	12.1%
Retail	3,700	3,700	3,300	0	0.0%	400	12.1%
Professional & Business Services	2,700	2,700	2,500	0	0.0%	200	8.0%
Leisure & Hospitality	4,100	4,000	4,000	100	2.5%	100	2.5%
Government	11,300	11,200	11,200	100	0.9%	100	0.9%
Federal	500	500	600	0	0.0%	-100	-16.7%
State	7,600	7,600	7,500	0	0.0%	100	1.3%
Local	3,200	3,100	3,100	100	3.2%	100	3.2%

Size Class of Industries - Sep 2005 (Non-Government Worksites)

Size Class	Employees Per Worksite	Number of Worksites	Employment in Size Class	% of Total Employment
9	1000+	0	0	0.0%
8	500-999	1	530	2.4%
7	250-499	2	897	4.0%
6	100-249	24	3,944	17.8%
5	50-99	51	3,625	16.3%
4	20-49	175	5,197	23.4%
3	10-19	240	3,253	14.6%
2	5-9	390	2,644	11.9%
1	0-4	1,292	2,122	9.6%
Total		2,175	22,212	100.0%

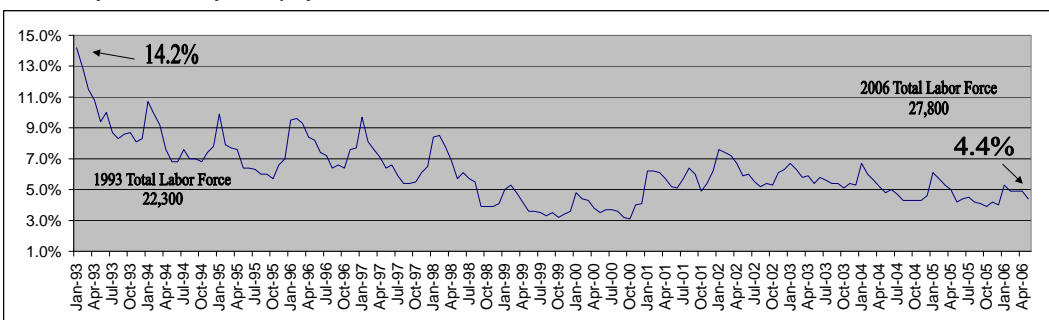
Largest Private Employers - Sep 2005

Employer	Employees	Industry
CASINO FANDANGO	500-599	Casinos
CARSON CITY NUGGET	400-499	Casinos
CHROMALLOY NEVADA	300-399	Aircraft Engines
HEALTHSOUTH	200-299	Spec. Therapists
PINON PLAZA RESORT	200-299	Casino Hotels
COSTCO WHOLESALE CORP	200-299	Warehouse Clubs
HARLEY-DAVIDSON CREDIT CORP	200-299	Sales Financing
PCC STRUCTURALS - CARSON	200-299	Steel Investment
CARSON STATION HOTEL CASINO	200-299	Casino Hotels
MISSION INDUSTRIES	200-299	Linen Supply
WAL-MART STORES, INC.	100-199	Warehouse Clubs
LOWE'S	100-199	Home Centers
SLOTWORLD INC	100-199	Casinos
CAVALLERO HEATING & AIR COND.	100-199	Plumbing/HVAC
MANPOWER TEMPORARY SERVICES	100-199	Temporary Help

Labor Force and Unemployment

	MAY 2006	APR 2006	MAY 2005	Monthly Change		Annual Change	
				Total	%	Total	%
Total Labor Force	27,800	27,800	27,100	0	0.0%	700	2.6%
Unemployment	1,200	1,400	1,100	-200	-14.3%	100	9.1%
Unemployment Rate	4.4%	4.9%	4.2%	*	*	*	*
Total Employment	26,600	26,400	26,000	200	0.8%	600	2.3%

Carson City MSA Monthly Unemployment Rates 1993 to Current



2005 Avg Wages By Industry-OES Survey Data

Industry	Avg. Hourly Wage
Total All Industries	\$17.44
Natural Resources and Mining	N/A
Construction	\$20.02
Manufacturing	\$17.58
Trade, Transportation & Utilities	\$14.90
Information	\$16.37
Financial Activities	\$16.90
Professional & Business Services	\$19.54
Education & Health Services	\$18.75
Leisure & Hospitality	\$9.06
Other Services	\$13.73
Government	\$22.87

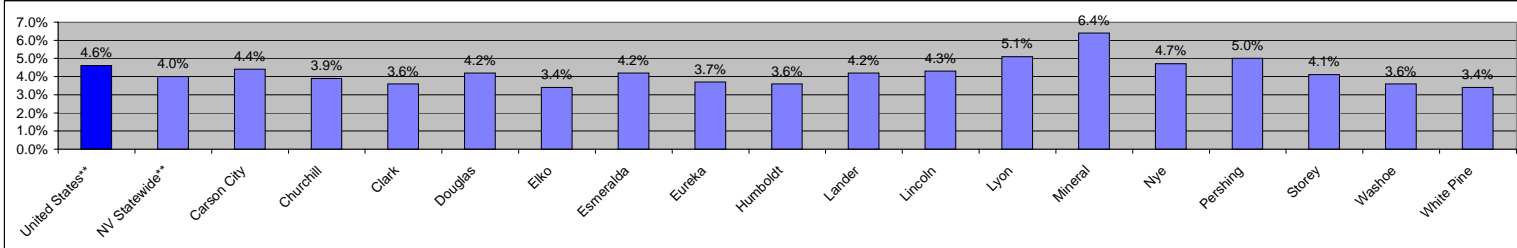
Employment data for current month is preliminary and previous month has been revised. All data subject to annual benchmark revisions.

*MSA = Metropolitan Statistical Area / Carson City MSA = Carson City

Nevada County Employment and Unemployment Summary

May 2006

Current Unemployment Rates By County



Total Labor Force - May 2006

	Total Labor Force	# of Employed	# of Unemployed	Unemp. Rate
Nevada**	1,266,400	1,219,400	47,000	4.0%
Carson City	27,790	26,560	1,230	4.4%
Churchill	12,810	12,310	500	3.9%
Clark	901,780	868,870	32,910	3.6%
Douglas	22,040	21,120	920	4.2%
Elko	24,080	23,270	810	3.4%
Esmeralda	450	430	20	4.2%
Eureka	710	680	30	3.7%
Humboldt	7,860	7,580	280	3.6%
Lander	2,830	2,710	120	4.2%
Lincoln	1,500	1,440	60	4.3%
Lyon	21,060	19,980	1,080	5.1%
Mineral	2,120	1,980	140	6.4%
Nye	17,130	16,330	800	4.7%
Pershing	2,380	2,260	120	5.0%
Storey	2,200	2,110	90	4.1%
Washoe	215,400	207,620	7,780	3.6%
White Pine	4,270	4,120	150	3.4%
Elko Micropolitan Area***	24,770	23,940	830	3.4%

Total Labor Force - May 2005

	Total Labor Force	# of Employed	# of Unemployed	Unemp. Rate
Nevada**	1,208,800	1,162,100	46,700	4.1%
Carson City	27,140	25,990	1,150	4.2%
Churchill	12,260	11,810	450	3.6%
Clark	858,870	825,850	33,020	3.8%
Douglas	21,700	20,790	910	4.2%
Elko	23,130	22,350	780	3.4%
Esmeralda	450	430	20	4.4%
Eureka	670	650	20	3.4%
Humboldt	7,560	7,310	250	3.3%
Lander	2,590	2,490	100	3.8%
Lincoln	1,550	1,480	70	4.6%
Lyon	19,950	18,940	1,010	5.0%
Mineral	2,080	1,970	110	5.3%
Nye	16,040	15,240	800	5.0%
Pershing	2,350	2,240	110	4.7%
Storey	2,120	2,020	100	4.5%
Washoe	206,050	198,420	7,630	3.7%
White Pine	4,270	4,110	160	3.6%
Elko Micropolitan Area***	23,790	22,990	800	3.4%

Labor Force Change (May 2005 to May 2006)

	Change In Total Labor Force		Change In Number of Employed		Change In Number of Unemployed	
	Number	Percent	Number	Percent	Number	Percent
Nevada**	57,600	4.8%	57,300	4.9%	300	0.6%
Carson City	650	2.4%	570	2.2%	80	7.0%
Churchill	550	4.5%	500	4.2%	50	11.1%
Clark	42,910	5.0%	43,020	5.2%	-110	-0.3%
Douglas	340	1.6%	330	1.6%	10	1.1%
Elko	950	4.1%	920	4.1%	30	3.8%
Esmeralda	0	0.0%	0	0.0%	0	0.0%
Eureka	40	6.0%	30	4.6%	10	50.0%
Humboldt	300	4.0%	270	3.7%	30	12.0%
Lander	240	9.3%	220	8.8%	20	20.0%
Lincoln	-50	-3.2%	-40	-2.7%	-10	-14.3%
Lyon	1,110	5.6%	1,040	5.5%	70	6.9%
Mineral	40	1.9%	10	0.5%	30	27.3%
Nye	1,090	6.8%	1,090	7.2%	0	0.0%
Pershing	30	1.3%	20	0.9%	10	9.1%
Storey	80	3.8%	90	4.5%	-10	-10.0%
Washoe	9,350	4.5%	9,200	4.6%	150	2.0%
White Pine	0	0.0%	10	0.2%	-10	-6.3%
Elko Micropolitan Area***	980	4.1%	950	4.1%	30	3.8%

Employment by Area - 3rd Quarter 2005 (Jul-Sep) Average

	3rd Qtr 2005		3rd Qtr 2004		Total Change	% Change
	3rd Qtr 2005	3rd Qtr 2004	3rd Qtr 2005	3rd Qtr 2004		
Nevada	1,227,497	1,157,007	70,490	6.1%		
Carson City	32,110	31,971	139	0.4%		
Churchill	8,677	8,242	435	5.3%		
Clark	871,507	814,916	56,591	6.9%		
Douglas	22,227	22,285	-58	-0.3%		
Elko	20,493	19,473	1,020	5.2%		
Esmeralda	230	207	23	11.1%		
Eureka	3,907	3,655	252	6.9%		
Humboldt	7,733	7,270	463	6.4%		
Lander	2,107	1,796	311	17.3%		
Lincoln	1,253	1,245	8	0.7%		
Lyon	12,483	11,349	1,134	10.0%		
Mineral	1,717	1,757	-40	-2.3%		
Nye	12,127	11,162	965	8.6%		
Pershing	1,887	1,940	-53	-2.7%		
Storey	1,370	1,070	300	28.0%		
Washoe	215,263	206,879	8,384	4.1%		
White Pine	3,910	3,520	390	11.1%		

Employment By Industry - 3rd Quarter 2005 (Jul-Sep) Average

	Nat. Resources & Mining	Const	Manuf	Trade, Transp. & Utilities	Information	Financial Activities	Profess. & Bus. Svcs	Education & Health Svcs	Leisure and Hospitality	Other Services	Gov't
Nevada	13,347	140,160	48,130	216,207	14,340	65,930	145,803	84,377	334,603	27,010	135,693
Carson City	0	2,493	3,123	4,497	277	1,720	2,530	2,353	4,133	903	10,037
Churchill	273	850	517	1,720	130	313	1,080	760	1,040	150	1,857
Clark	537	104,087	25,127	94,333	10,167	49,997	103,973	57,713	267,710	19,050	83,017
Douglas	197	2,163	1,733	2,767	207	847	1,617	1,027	9,067	370	2,210
Elko	2,017	1,647	180	3,450	173	570	1,033	1,053	6,263	487	3,610
Esmeralda	77	20	*	20	*	0	*	0	*	*	87
Eureka	3,563	*	50	0	0	*	*	40	10	180	
Humboldt	2,163	387	327	1,460	80	113	377	260	1,187	140	1,243
Lander	693	*	*	417	*	27	50	30	207	10	510
Lincoln	20	20	200	27	53	*	20	93	*	593	
Lyon	730	1,587	2,510	2,417	23	293	683	617	1,447	240	1,923
Mineral	67	40	13	123	*	33	*	47	253	10	573
Nye	1,097	1,247	277	1,723	90	343	2,800	567	2,130	197	1,640
Pershing	463	*	93	193	10	30	23	40	183	*	727
Storey	83	127	283	317	*	20	33	*	180	130	187
Washoe	517	23,920	13,857	45,197	2,927	10,937	27,157	19,547	40,013	5,097	25,850
White Pine	777	160	30	523	30	97	103	150	547	60	1,440

Hours and Earnings

	Production Workers (In 000's)			Average Weekly Earnings			Average Weekly Hours			Average Hourly Earnings		
	MAY 2006	MAY 2005	APR 2006	MAY 2006	MAY 2005	APR 2006	MAY 2006	MAY 2005	APR 2006	MAY 2006	MAY 2005	APR 2006
Nevada	116,700	104,500	115,000	\$815.25	\$805.88	\$811.38	37.5	37.5	37.1	\$21.74	\$21.49	\$21.87
Construction	116,700	104,500	115,000	\$815.25	\$805.88	\$811.38	37.5	37.5	37.1	\$21.74	\$21.49	\$21.87
Manufacturing	36,600	35,300	36,600	\$616.90	\$590.23	\$619.29	39.8	39.8	39.8	\$15.50	\$14.83	\$15.56
Durable Goods	25,700	24,700	25,600	\$628.85	\$601.85	\$629.24	39.7	39.7	39.6	\$15.84	\$15.16	\$15.89
Non-durable Goods	10,900	10,600	11,000	\$590.94	\$562.80	\$593.88	40.2	40.0	40.1	\$14.70	\$14.07	\$14.81
Wholesale Trade	31,900	30,200	31,800	\$605.76	\$600.20	\$601.20	36.1	36.2	36.0	\$16.78	\$16.58	\$16.70
Retail Trade	116,900	111,400	116,100	\$435.12	\$419.68	\$435.27	34.1	33.9	34.3	\$12.76	\$12.38	\$12.69
Las Vegas-Paradise MSA	88,200	80,000	88,000	\$884.64	\$851.24	\$885.65	38.0	38.5	37.8	\$23.28	\$22.11	\$23.43
Construction	88,200	80,000	88,000	\$884.64	\$851.24	\$885.65	38.0	38.5	37.8	\$23.28	\$22.11	\$23.43
Manufacturing	20,600	19,500	20,400	\$592.50	\$589.55	\$589.82	39.5	39.7	39.4	\$15.00	\$14.85	\$14.97
Wholesale Trade	19,100	17,800	18,900	\$635.01	\$626.48	\$635.64	38.3	38.2	38.5	\$16.58	\$16.40	\$16.51
Retail Trade	84,000	79,500	84,000	\$456.65	\$445.05	\$452.30	34.7	34.5	34.5	\$13.16	\$12.90	\$13.11

Seasonally Adjusted Employment (Statewide Only)

Employment In Thousands	Apr-05	May-05	Jun-05	Jul-05	Aug-05	Sep-05	Oct-05	Nov-05	Dec-05	Jan-06	Feb-06	Mar-06	Apr-06	May-06
Total All Industries	1216.1	1217.9	1223.8	1229.2	1230.5	1239.3	1247.6	1250.7	1256.6	1258.1	1264.5	1269.4	1279.2	1282.8
Natural Resources and Mining	10.7	10.5	10.6	10.6	10.7	10.8	11.0	11.2	11.2	11.2	11.2	11.1	11.1	11.2
Construction	132.6	133.3	133.8	136.1	137.4	139.3	141.8	142.1	143.9	144.1	145.8	146.2	147.3	147.4
Manufacturing	47.8	47.5	47.7	47.7	47.5	48.1	48.3	48.4	48.4	48.6	48.7	48.8	49.1	49.2
Trade, Transportation & Utilities	213.4	213.8	214.5	216.1	216.6	218.3	219.1	219.4	219.7	220.1	221.8	223.9	225.4	226.8
Retail	130.5	130.6	131.0	132.4	132.7	133.6	133.9	134.0	134.2	135.7	136.7	137.6	137.8	138.1
Information	14.9	15.4	14.7	14.5	14.4	14.1	14.4	14.4	14.4	14.5	14.4	14.3	14.5	14.8
Financial Activities	64.2	64.6	65.0	65.0	65.5	66.0	66.7	66.9	67.3	67.5	67.6	67.4	67.6	67.9
Professional & Business Services	143.4	143.6	144.6	145.1	145.2	146.0	147.1	147.9	149.3	150.7	151.0	153.3	156.2	157.1
Education & Health Services	84.0	84.2	84.7	84.8	84.9	85.0	85.5	85.7	86.3	86.4	87.0	87.3	87.5	87.6
Leisure & Hospitality	328.3	327.8	330.5	330.8	330.1	332.5	332.9	333.2	333.8	333.7	334.5	334.4	336.1	336.1
Casino Hotels and Gaming	215.5	215.3	217.2	217.0	216.6	217.4	217.8	217.9	218.4	218.7	219.5	217.0	217.1	216.8
Other Services	33.6	33.8	34.1	34.6	34.8	35.1	35.7	35.9	36.2	35.4	35.9	36.1	36.5	36.6
Government	143.2	143.4	143.6	143.9	143.4	144.1	145.1	145.6	146.1	145.9	146.6	146.6	147.9	148.1

Employment data for current month is preliminary and previous month has been revised. All data subject to annual benchmark revisions.

* Indicates Data Suppressed Due To Confidentiality. **The United States and Nevada statewide unemployment rates are seasonally adjusted.

*** Elko Micropolitan Statistical Area = Elko and Eureka Counties

State of Nevada
Department of Employment, Training & Rehabilitation
Research & Analysis Bureau
500 E. Third Street
Carson City, NV 89713-0001

Nevada Economy In Brief

The Nevada Economy in Brief provides a wealth of Nevada workforce and economic information and is published monthly by the Nevada Department of Employment, Training and Rehabilitation / Research and Analysis Bureau. Material contained in this publication is produced in cooperation with the U.S. Department of Labor (Bureau of Labor Statistics and the Employment and Training Administration) and may be reproduced without permission. Please credit Nevada Department of Employment, Training and Rehabilitation. For additional workforce or other economic information, a free subscription to the Nevada Economy in Brief, or to change your mailing address, please contact the Research and Analysis Bureau.

Phone (775) 684-0450
Fax (775) 684-0342
E-mail detrlmi@nvdetr.org

Websites
www.nevadaworkforce.com
www.nevadajobconnect.com
www.nvdetr.org



Nevada

Economy In Brief

April 2006

On the surface, the April employment data showed signs of weakness. The statewide and Las Vegas MSA unemployment rates rose by three-tenths of a percentage point to 4.1 percent and 4.0 percent, respectively. The pace of job growth, meanwhile, fell by nearly a full percentage point to 5.1 percent statewide and 5.5 percent in the Las Vegas area. Both growth figures are down from their loftier ranges last year. While the current business cycle may well have passed its peak, the April figures are better than they seem.

Economic Indicators

UNEMPLOYMENT RATES APR 2006

NEVADA (SA)*	4.1%
LAS VEGAS-PARADISE MSA	4.0%
RENO-SPARKS MSA	4.1%
CARSON CITY MSA	4.9%
ELKO MICROPOLITAN AREA	4.4%
UNITED STATES (SA)*	4.7%
CALIFORNIA (SA)*	4.9%

*(SA) - Seasonally Adjusted

JOB GROWTH (LAST 12 MONTHS)

NEVADA	5.1%
LAS VEGAS-PARADISE MSA	5.5%
RENO-SPARKS MSA	4.7%
CARSON CITY MSA	3.1%
UNITED STATES	1.5%
CALIFORNIA	1.5%

CONSUMER PRICE INDEX (1yr %Chg)

UNITED STATES	3.5%
---------------	------

GROSS GAMING WIN (% CHANGE)

MAR 2005 - MAR 2006

NEVADA	3.0%
CLARK COUNTY	5.0%
WASHOE COUNTY	-3.2%

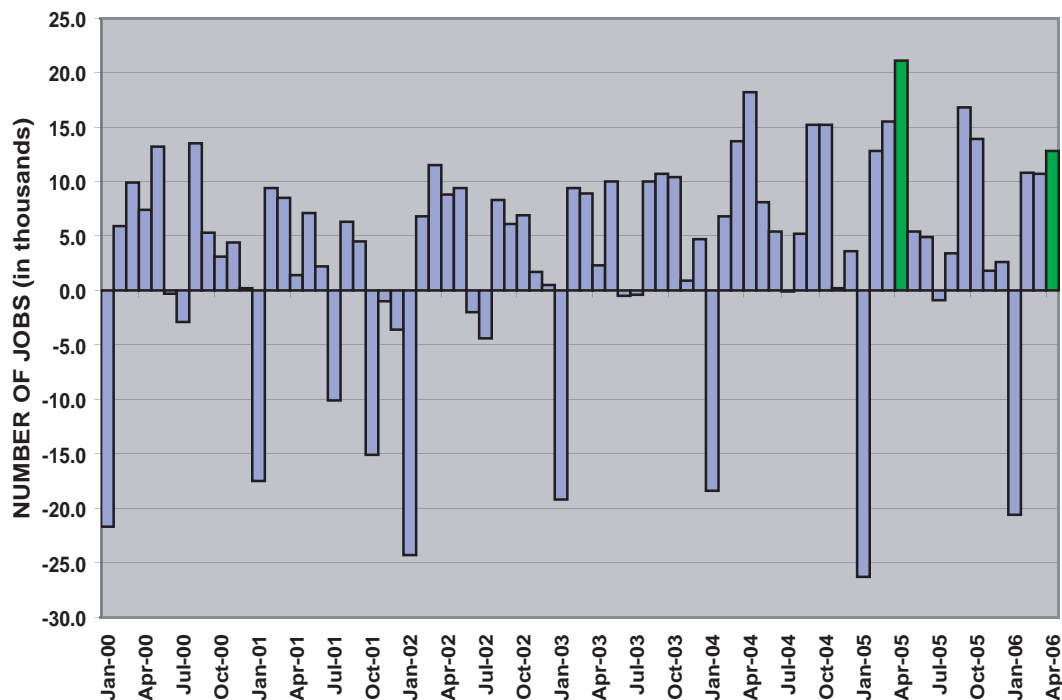
TAXABLE SALES (% CHANGE)

FEB 2005 - FEB 2006

NEVADA	11.4%
CLARK COUNTY	11.2%
WASHOE COUNTY	11.9%

NEVADA EMPLOYMENT CHANGE BY MONTH

January 2000 - April 2006



In April 2005, the Wynn Las Vegas resort opened and added 9,000 new jobs in the gaming sector. An abnormally high 21,100 jobs were added to the statewide total during the month, creating a difficult year-to-year comparison. This year 12,800 jobs were added in April, a strong growth figure that compares quite favorably if the jobs created at Wynn last year are removed. By any standard, a 5.1 percent rate of job growth is very impressive.

There are extenuating circumstances on the unemployment side of the equation as well. Although the actual number of

(Continued on Page2)

In This Issue

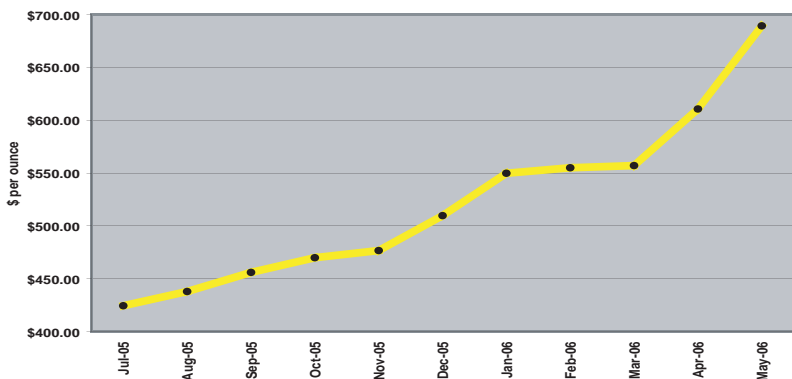
Nevada Economy In Brief.....	1&2
Gold and Copper Prices.....	2
Employment/Unemployment Data Nevada Statewide.....	3
Las Vegas-Paradise MSA.....	4
Reno-Sparks MSA.....	5
Carson City MSA.....	6
Nevada County Summary.....	7
Contact Information.....	8

(Note: Data for May 2006 will be released on June 16, 2006)

unemployed increased by 3,600 statewide in April, much of the increase can be attributed to a rapid rise in the labor force. The number of persons working or seeking work (the basic definition of labor force) grew by more than 11,000 in April and not all of those potential workers could be absorbed. Another factor in April's rising unemployment was the first significant labor dispute in Nevada in some time. A strike/lockout at a pharmaceutical retailer in Las Vegas affected several hundred jobs and may have created a temporary distortion in the local labor market. In any case, one month of rising unemployment does not indicate a trend, but it bears watching.

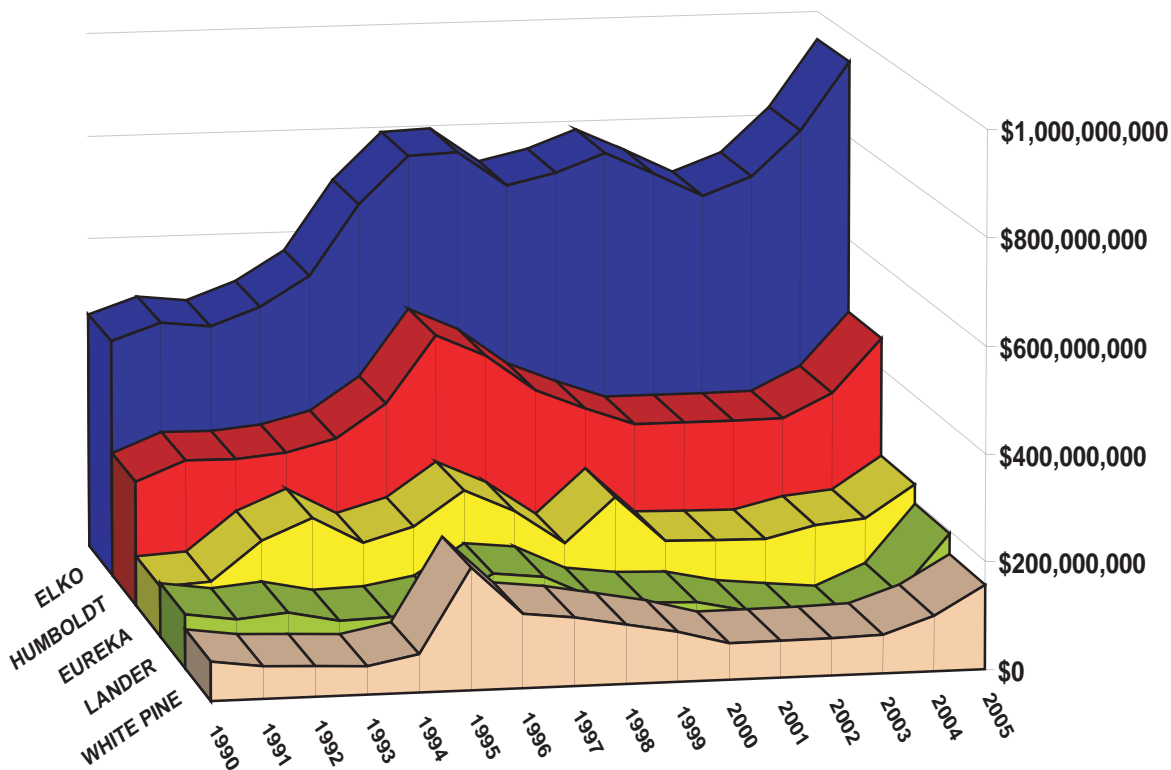
Nevada's rural counties continue to see their fortunes improve due to high mineral prices, but the current economic environment presents challenges as well. The price of gold has increased from approximately \$450 per ounce late last summer to the \$700 per ounce neighborhood. Copper, a mineral that gets far less attention but is very important to White Pine County, traded below \$1.00 per pound just three years ago but is currently priced between \$3.50 and \$4.00 per pound.

AVERAGE MONTHLY PRICE OF GOLD
JULY 1, 2005 - MAY 17, 2006

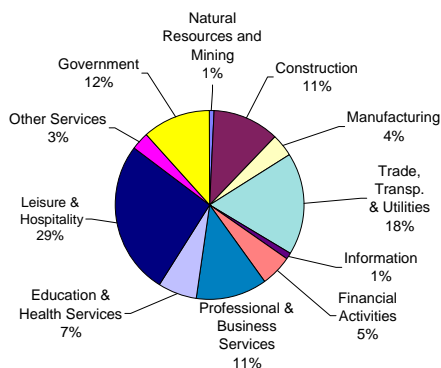


Because of increased exploration and mining activity, both the short- and long-term economic prospects have improved in the state's mining regions. Mining and mining support industries have added workers, retail trade has increased and housing markets have improved in many of the state's rural areas. However, both existing and potential new employers are finding skilled workers in short supply. Even when workers can be found, the question remains where they will be housed. Meanwhile, high fuel prices mean higher transportation costs to move products from remote Nevada locations to their ultimate markets.

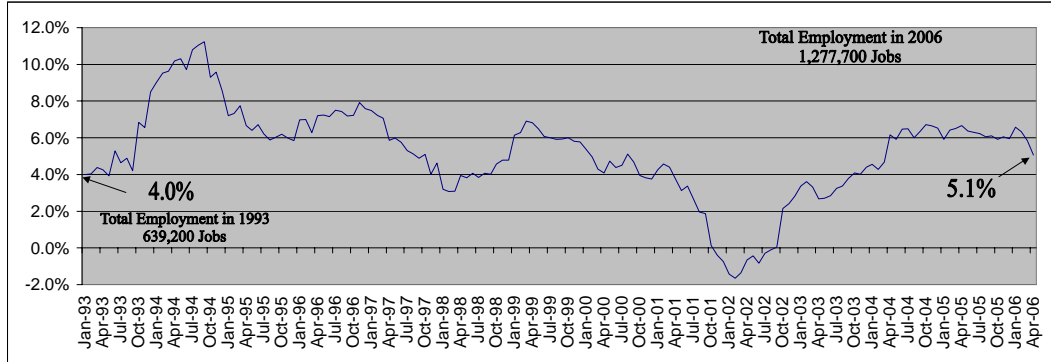
TAXABLE SALES BY COUNTY
MINING AREAS
ANNUAL TOTALS
1990 - 2005



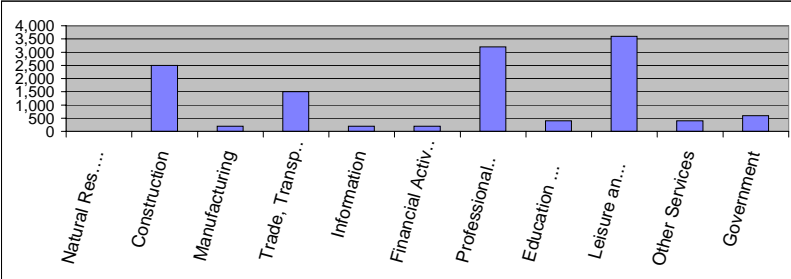
Nevada Industry Composition



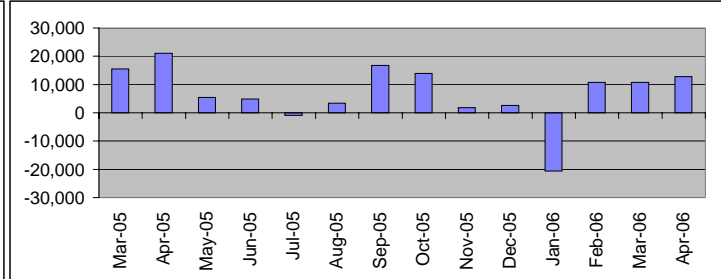
Annual Job Growth Rate for Total NonAgricultural Employment



Monthly Change by Industry



Monthly Change In Total Non-Ag. Employment



Nevada Employment By Industry

	APR 2006	MAR 2006	APR 2005	Monthly Change		Annual Change	
				Total	%	Total	%
Total All Industries	1,277,700	1,264,900	1,216,100	12,800	1.0%	61,600	5.1%
Natural Resources and Mining	11,000	11,000	10,500	0	0.0%	500	4.8%
Construction	146,100	143,600	131,600	2,500	1.7%	14,500	11.0%
Manufacturing	48,900	48,700	47,600	200	0.4%	1,300	2.7%
Trade, Transportation & Utilities	222,400	220,900	211,000	1,500	0.7%	11,400	5.4%
Wholesale	38,600	38,400	36,900	200	0.5%	1,700	4.6%
Retail	135,500	134,700	128,300	800	0.6%	7,200	5.6%
Trans, Warehousing and Utilities	48,300	47,800	45,800	500	1.0%	2,500	5.5%
Information	14,500	14,300	14,900	200	1.4%	-400	-2.7%
Financial Activities	67,400	67,200	63,900	200	0.3%	3,500	5.5%
Finance and Insurance	41,500	41,400	39,400	100	0.2%	2,100	5.3%
Professional & Business Services	155,700	152,500	143,700	3,200	2.1%	12,000	8.4%
Education & Health Services	88,000	87,600	84,400	400	0.5%	3,600	4.3%
Health Care and Social Assistance	81,500	81,100	78,500	400	0.5%	3,000	3.8%
Leisure & Hospitality	336,500	332,900	328,500	3,600	1.1%	8,000	2.4%
Casino Hotels and Gaming	217,800	215,700	215,900	2,100	1.0%	1,900	0.9%
Food Services and Drinking Places	90,200	89,300	85,100	900	1.0%	5,100	6.0%
Other Services	36,500	36,100	33,900	400	1.1%	2,600	7.7%
Government	150,700	150,100	146,100	600	0.4%	4,600	3.1%

Size Class of Industries - Sep 2005 (Non-Government Worksites)

Size Class	Employees Per Worksite	Number of Worksites	Employment in Size Class	% of Total Employment
9	1000+	91	208,359	19.0%
8	500-999	141	97,541	8.9%
7	250-499	245	85,452	7.8%
6	100-249	1,069	162,106	14.8%
5	50-99	1,914	132,575	12.1%
4	20-49	5,735	173,158	15.8%
3	10-19	8,026	109,063	9.9%
2	5-9	11,332	75,824	6.9%
1	0-4	37,754	54,369	4.9%
Total		66,307	1,098,447	100.0%

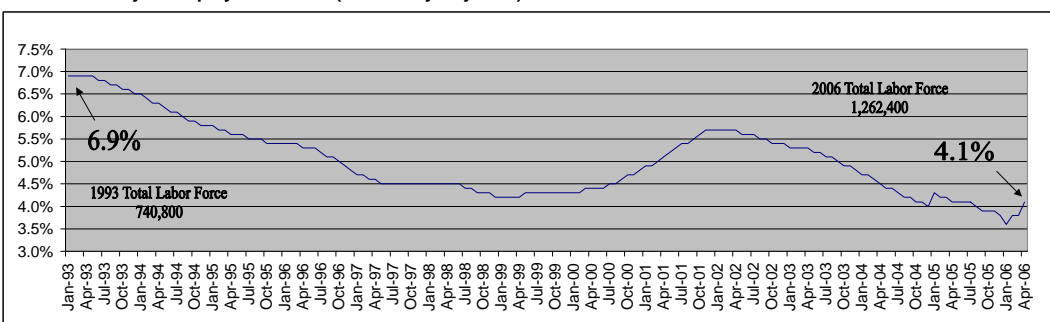
Nevada's Largest Private Employers - Sep 2005

Employer	Employees	Industry
BELLAGIO, LLC	9500-9900	Casino Hotels
WYNN LAS VEGAS, LLC	8500-8999	Casino Hotels
MGM GRAND HOTEL/CASINO	8000-8499	Casino Hotels
MANDALAY BAY RESORT AND CASINO	8000-8499	Casino Hotels
MIRAGE CASINO-HOTEL, THE	5500-5999	Casino Hotels
CAESARS PALACE	4500-4999	Casino Hotels
RIO SUITE HOTEL & CASINO	4000-4499	Casino Hotels
LUXOR	3500-3999	Casino Hotels
EXCALIBUR HOTEL & CASINO	3500-3999	Casino Hotels
FLAMINGO HILTON CORPORATION	3500-3999	Casino Hotels
BALLY'S & PARIS CASINO HOTELS	3500-3999	Casino Hotels
TREASURE ISLAND AT THE MIRAGE	3500-3999	Casino Hotels
HARRAH'S LAS VEGAS, INC	3000-3499	Casino Hotels
CIRCUS CIRCUS CASINOS, INC.-LV	3000-3499	Casino Hotels
ALADDIN RESORT & CASINO	3000-3499	Casino Hotels

Labor Force and Unemployment

	APR 2006	MAR 2006	APR 2005	Monthly Change		Annual Change	
				Total	%	Total	%
Total Labor Force	1,262,400	1,251,200	1,214,300	11,200	0.9%	48,100	4.0%
Unemployment	52,400	48,800	50,600	3,600	7.4%	1,800	3.6%
Unemployment Rate	4.1%	3.9%	4.2%	*	*	*	*
Unemployment Rate (SA)	4.1%	3.8%	4.1%	*	*	*	*
Total Employment	1,210,000	1,202,400	1,163,700	7,600	0.6%	46,300	4.0%

Nevada Monthly Unemployment Rates (Seasonally Adjusted) 1993 to Current



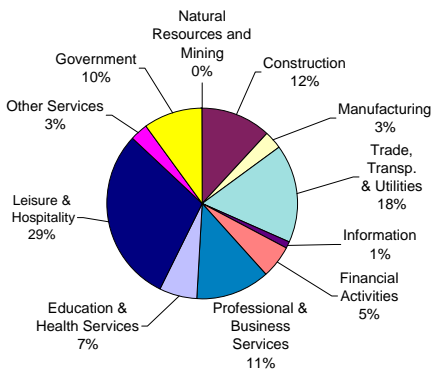
2005 Avg Wages By Industry-OES Survey Data

Industry	Avg. Hourly Wage
Total All Industries	\$16.63
Natural Resources and Mining	\$23.28
Construction	\$20.46
Manufacturing	\$18.14
Trade, Transportation & Utilities	\$15.13
Information	\$19.83
Financial Activities	\$18.96
Professional & Business Services	\$18.56
Education & Health Services	\$20.72
Leisure & Hospitality	\$11.36
Other Services	\$14.77
Government	\$22.79

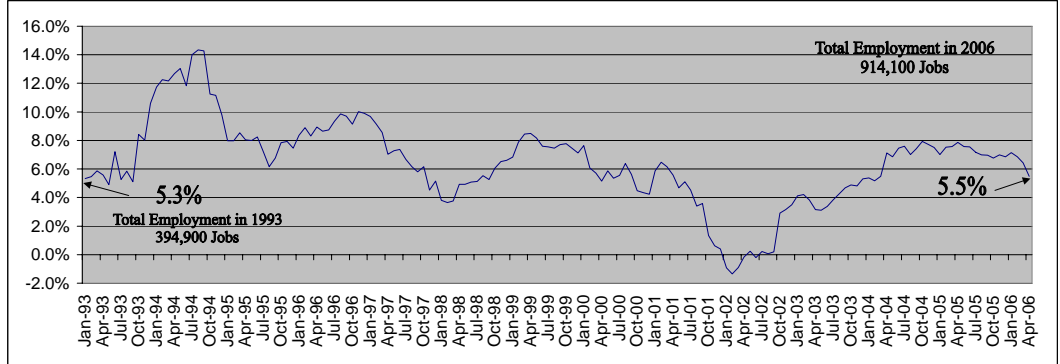
Employment data for current month is preliminary and previous month has been revised. All data subject to annual benchmark revisions.

Note: The statewide unemployment rate is seasonally adjusted

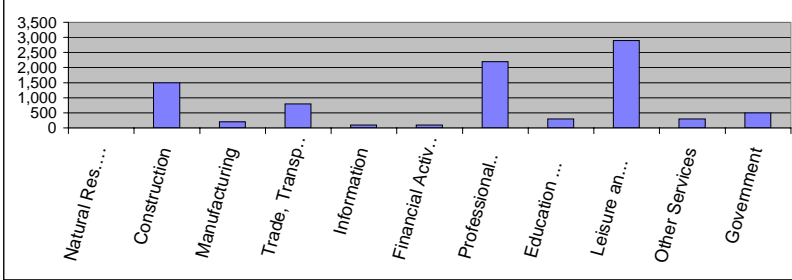
Las Vegas-Paradise MSA Industry Composition



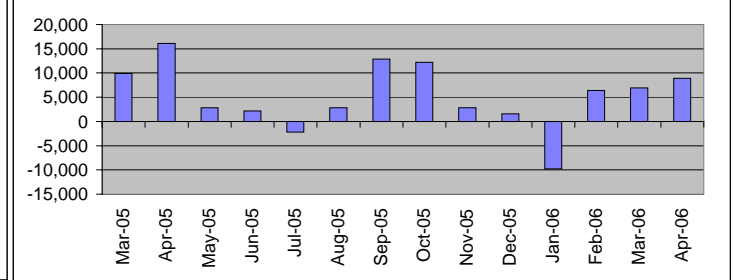
Annual Job Growth Rate for Total NonAgricultural Employment



Monthly Change by Industry



Monthly Change In Total Non-Ag. Employment



Las Vegas-Paradise MSA Employment By Industry

	APR 2006	MAR 2006	APR 2005	Monthly Change		Annual Change	
				Total	%	Total	%
Total All Industries	914,100	905,200	866,600	8,900	1.0%	47,500	5.5%
Natural Resources and Mining	400	400	400	0	0.0%	0	0.0%
Construction	109,800	108,300	99,400	1,500	1.4%	10,400	10.5%
Manufacturing	25,900	25,700	24,600	200	0.8%	1,300	5.3%
Trade, Transportation & Utilities	153,200	152,400	145,500	800	0.5%	7,700	5.3%
Wholesale	23,300	23,100	21,800	200	0.9%	1,500	6.9%
Retail	96,000	95,600	91,700	400	0.4%	4,300	4.7%
Trans, Warehousing and Utilities	33,900	33,700	32,000	200	0.6%	1,900	5.9%
Information	10,500	10,400	10,600	100	1.0%	-100	-0.9%
Financial Activities	51,700	51,600	48,400	100	0.2%	3,300	6.8%
Finance and Insurance	31,300	31,200	29,500	100	0.3%	1,800	6.1%
Professional & Business Services	112,400	110,200	104,300	2,200	2.0%	8,100	7.8%
Education & Health Services	60,400	60,100	57,400	300	0.5%	3,000	5.2%
Health Care and Social Assistance	55,600	55,400	53,100	200	0.4%	2,500	4.7%
Leisure & Hospitality	271,700	268,800	263,900	2,900	1.1%	7,800	3.0%
Casino Hotels and Gaming	179,500	177,700	176,500	1,800	1.0%	3,000	1.7%
Food Services and Drinking Places	70,500	69,700	66,700	800	1.1%	3,800	5.7%
Other Services	25,600	25,300	23,400	300	1.2%	2,200	9.4%
Government	92,500	92,000	88,700	500	0.5%	3,800	4.3%

Size Class of Industries - Sep 2005 (Non-Government Worksites)

Size Class	Employees Per Worksite	Number of Worksites	Employment in Size Class	% of Total Employment
9	1000+	73	177,144	22.3%
8	500-999	111	77,286	9.7%
7	250-499	185	63,929	8.0%
6	100-249	752	114,097	14.4%
5	50-99	1,337	92,518	11.6%
4	20-49	3,875	117,791	14.8%
3	10-19	5,162	70,287	8.8%
2	5-9	7,169	48,032	6.0%
1	0-4	23,341	33,222	4.2%
Total		42,005	794,306	100.0%

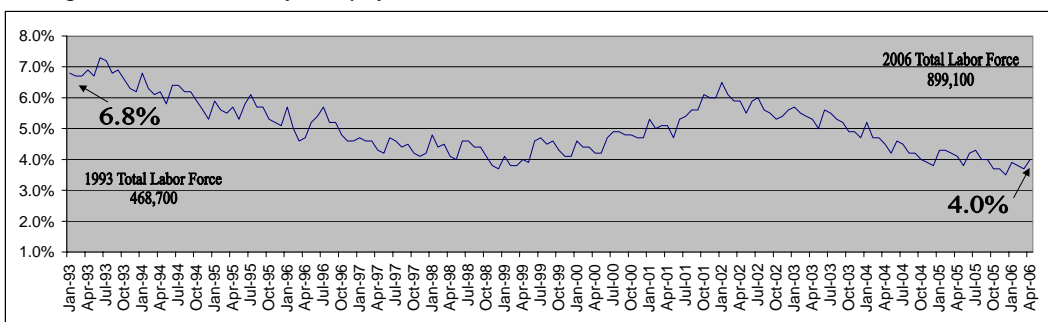
Largest Private Employers - Sep 2005

Employer	Employees	Industry
BELLAGIO, LLC	9500-9900	Casino Hotels
WYNN LAS VEGAS, LLC	8500-8999	Casino Hotels
MGM GRAND HOTEL/CASINO	8000-8499	Casino Hotels
MANDALAY BAY RESORT AND CASINO	8000-8499	Casino Hotels
MIRAGE CASINO-HOTEL, THE	5500-5999	Casino Hotels
CAESARS PALACE	4500-4999	Casino Hotels
RIO SUITE HOTEL & CASINO	4000-4499	Casino Hotels
LUXOR	3500-3999	Casino Hotels
EXCALIBUR HOTEL & CASINO	3500-3999	Casino Hotels
FLAMINGO HILTON CORPORATION	3500-3999	Casino Hotels
BALLY'S & PARIS CASINO HOTELS	3500-3999	Casino Hotels
TREASURE ISLAND AT THE MIRAGE	3500-3999	Casino Hotels
HARRAH'S LAS VEGAS, INC	3000-3499	Casino Hotels
CIRCUS CIRCUS CASINOS, INC.-LV	3000-3499	Casino Hotels
ALADDIN RESORT & CASINO	3000-3499	Casino Hotels

Labor Force and Unemployment

	APR 2006	MAR 2006	APR 2005	Monthly Change		Annual Change	
				Total	%	Total	%
Total Labor Force	899,100	890,800	862,500	8,300	4.2%	36,600	4.2%
Unemployment	36,200	33,000	35,200	3,200	9.7%	1,000	2.8%
Unemployment Rate	4.0%	3.7%	4.1%	*	*	*	*
Total Employment	862,900	857,800	827,300	5,100	0.6%	35,600	4.3%

Las Vegas-Paradise MSA Monthly Unemployment Rates 1993 to Current



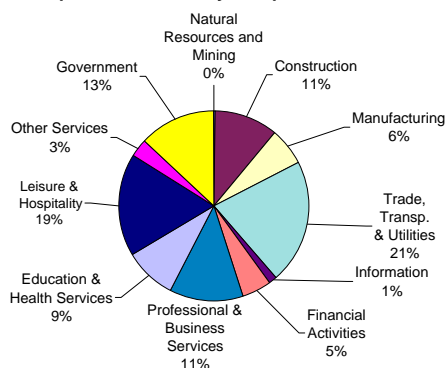
2005 Avg Wages By Industry-OES Survey Data

Industry	Avg. Hourly Wage
Total All Industries	\$16.56
Natural Resources and Mining	\$20.06
Construction	\$20.55
Manufacturing	\$18.41
Trade, Transportation & Utilities	\$14.93
Information	\$20.51
Financial Activities	\$18.98
Professional & Business Services	\$18.72
Education & Health Services	\$20.99
Leisure & Hospitality	\$11.75
Other Services	\$14.60
Government	\$24.18

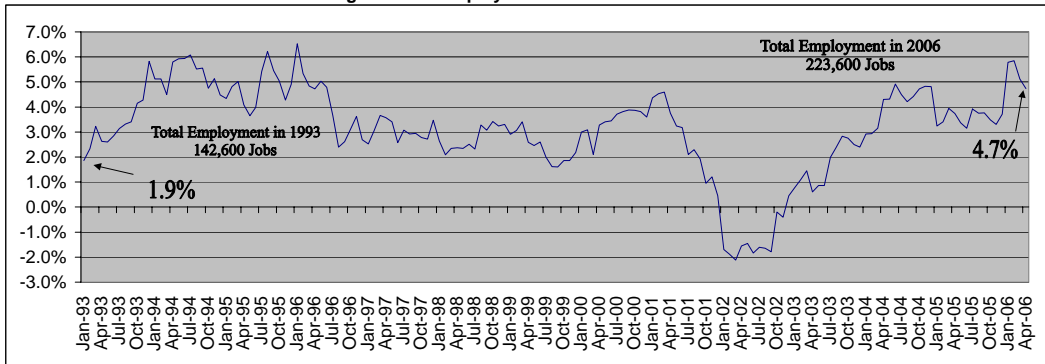
Employment data for current month is preliminary and previous month has been revised. All data subject to annual benchmark revisions.

*MSA = Metropolitan Statistical Area / Las Vegas-Paradise MSA = Clark County

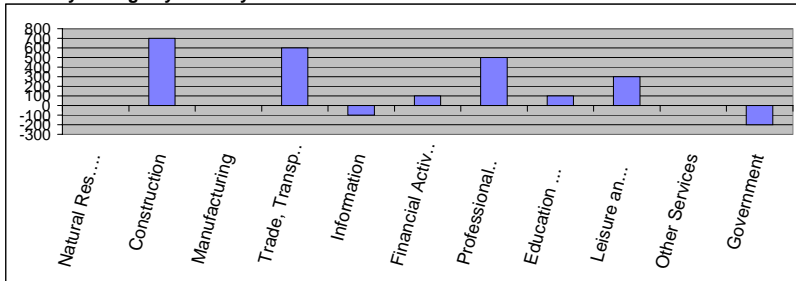
Reno-Sparks MSA Industry Composition



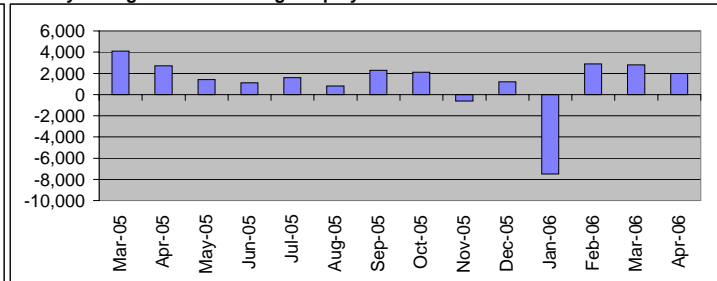
Annual Job Growth Rate for Total NonAgricultural Employment



Monthly Change by Industry



Monthly Change In Total Non-Ag. Employment



Reno-Sparks MSA Employment By Industry

	APR 2006	MAR 2006	APR 2005	Monthly Change		Annual Change	
				Total	%	Total	%
Total All Industries	223,600	221,600	213,500	2,000	0.9%	10,100	4.7%
Natural Resources and Mining	400	400	400	0	0.0%	0	0.0%
Construction	24,700	24,000	21,500	700	2.9%	3,200	14.9%
Manufacturing	14,200	14,200	14,200	0	0.0%	0	0.0%
Trade, Transportation & Utilities	47,300	46,700	44,400	600	1.3%	2,900	6.5%
Wholesale	11,100	11,000	10,800	100	0.9%	300	2.8%
Retail	24,800	24,600	22,900	200	0.8%	1,900	8.3%
Trans, Warehousing and Utilities	11,400	11,100	10,700	300	2.7%	700	6.5%
Information	2,800	2,900	3,000	-100	-3.4%	-200	-6.7%
Financial Activities	11,000	10,900	10,800	100	0.9%	200	1.9%
Finance and Insurance	7,100	7,100	6,800	0	0.0%	300	4.4%
Professional & Business Services	27,900	27,400	25,500	500	1.8%	2,400	9.4%
Education & Health Services	20,100	20,000	19,800	100	0.5%	300	1.5%
Leisure & Hospitality	39,000	38,700	38,600	300	0.8%	400	1.0%
Casino Hotels and Gaming	22,400	22,200	23,300	200	0.9%	-900	-3.9%
Food Services and Drinking Places	12,700	12,700	11,700	0	0.0%	1,000	8.5%
Other Services	7,300	7,300	7,000	0	0.0%	300	4.3%
Government	28,900	29,100	28,300	-200	-0.7%	600	2.1%

Size Class of Industries - Sep 2005 (Non-Government Worksites)

Size Class	Employees Per Worksite	Number of Worksites	Employment in Size Class	% of Total Employment
9	1000+	13	23,426	12.3%
8	500-999	16	10,947	5.8%
7	250-499	40	13,998	7.4%
6	100-249	206	30,866	16.3%
5	50-99	383	26,488	14.0%
4	20-49	1,157	34,822	18.3%
3	10-19	1,682	22,914	12.1%
2	5-9	2,276	15,218	8.0%
1	0-4	7,380	11,136	5.9%
Total		13,153	189,815	100.0%

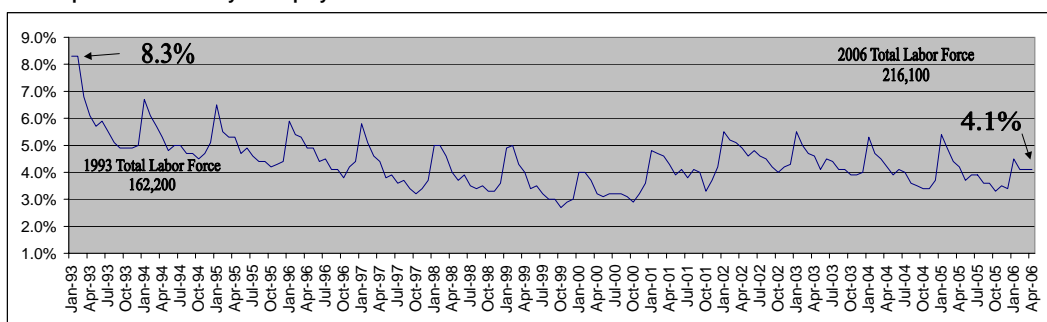
Largest Private Employers - Sep 2005

Employer	Employees	Industry
INTERNATIONAL GAME TECHNOLOGY	2500-2999	Misc. Manufac.
WASHOE MEDICAL CENTER, INC	2000-2499	Hospitals
SILVER LEGACY RESORT CASINO	2000-2499	Casino Hotels
PEPPERMILL HOTEL CASINO - RENO	1500-1999	Casino Hotels
RENO HILTON	1500-1999	Casino Hotels
ATLANTIS CASINO RESORT	1500-1999	Casino Hotels
ELDORADO HOTEL & CASINO	1500-1999	Casino Hotels
SPARKS NUGGET INC.	1500-1999	Casino Hotels
CIRCUS CIRCUS CASINOS, INC-RENO	1500-1999	Casino Hotels
ST. MARYS	1500-1999	Hospitals
HARRAH'S RENO	1000-1499	Casino Hotels
HIRE DYNAMICS	1000-1499	Temporary Help
UNITED PARCEL SERVICE	1000-1499	Couriers
QAL-NEVA, CLUB	900-999	Casino Hotels
Q&D CONSTRUCTION	900-999	Comm. Building

Labor Force and Unemployment

	APR 2006	MAR 2006	APR 2005	Monthly Change		Annual Change	
				Total	%	Total	%
Total Labor Force	216,100	214,800	209,000	1,300	0.6%	7,100	3.4%
Unemployment	8,900	8,800	8,700	100	1.1%	200	2.3%
Unemployment Rate	4.1%	4.1%	4.2%	*	*	*	*
Total Employment	207,200	206,000	200,300	1,200	0.6%	6,900	3.4%

Reno-Sparks MSA Monthly Unemployment Rates 1993 to Current



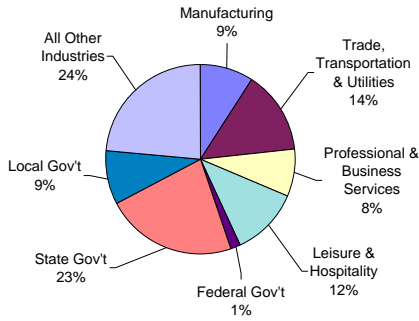
2005 Avg Wages By Industry-OES Survey Data

Industry	Avg. Hourly Wage
Total All Industries	\$17.10
Natural Resources and Mining	\$20.14
Construction	\$20.86
Manufacturing	\$18.38
Trade, Transportation & Utilities	\$15.99
Information	\$18.74
Financial Activities	\$19.81
Professional & Business Services	\$17.81
Education & Health Services	\$20.93
Leisure & Hospitality	\$10.09
Other Services	\$16.00
Government	\$22.10

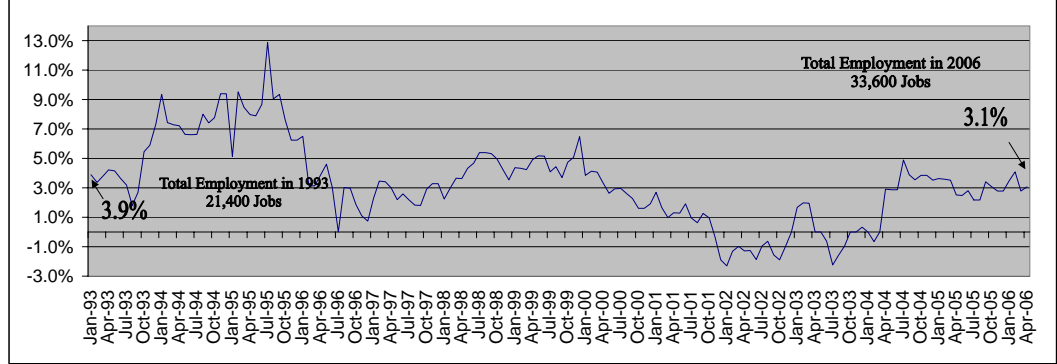
Employment data for current month is preliminary and previous month has been revised. All data subject to annual benchmark revisions.

*MSA = Metropolitan Statistical Area / Reno-Sparks MSA = Washoe County and Storey County

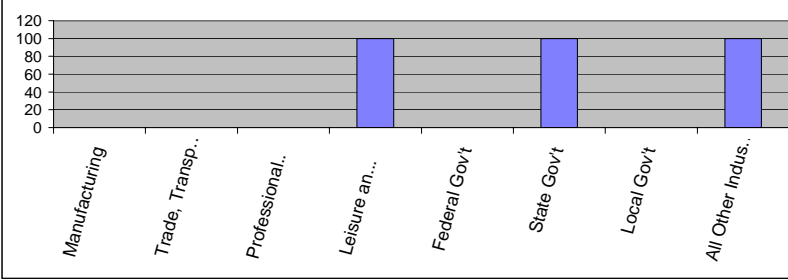
Carson City MSA Industry Composition



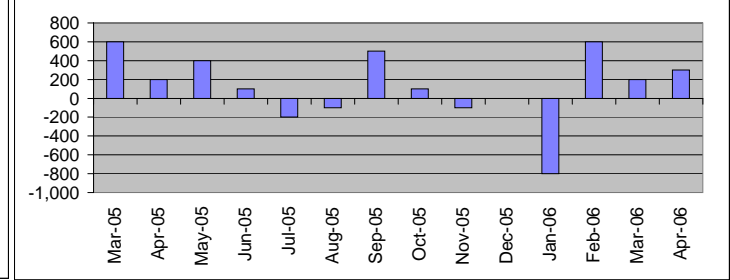
Annual Job Growth Rate for Total NonAgricultural Employment



Monthly Change by Industry



Monthly Change In Total Non-Ag. Employment



Carson City MSA Employment By Industry

	APR 2006	MAR 2006	APR 2005	Monthly Change		Annual Change	
				Total	%	Total	%
Total All Industries	33,600	33,300	32,600	300	0.9%	1,000	3.1%
Goods Producing	5,600	5,500	5,400	100	1.8%	200	3.7%
Manufacturing	3,100	3,100	3,100	0	0.0%	0	0.0%
Services Producing	28,000	27,800	27,200	200	0.7%	800	2.9%
Private Services Producing	16,800	16,700	16,100	0	0.0%	400	9.3%
Trade, Transportation & Utilities	4,700	4,700	4,300	100	2.8%	400	12.1%
Retail	3,700	3,600	3,300	100	2.8%	400	12.1%
Professional & Business Services	2,700	2,700	2,500	0	0.0%	200	8.0%
Leisure & Hospitality	4,000	3,900	3,900	100	2.6%	100	2.6%
Government	11,200	11,100	11,100	100	0.9%	100	0.9%
Federal	500	500	500	0	0.0%	0	0.0%
State	7,600	7,500	7,600	100	1.3%	0	0.0%
Local	3,100	3,100	3,000	0	0.0%	100	3.3%

Size Class of Industries - Sep 2005 (Non-Government Worksites)

Size Class	Employees Per Worksite	Number of Worksites	Employment in Size Class	% of Total Employment
9	1000+	0	0	0.0%
8	500-999	1	530	2.4%
7	250-499	2	897	4.0%
6	100-249	24	3,944	17.8%
5	50-99	51	3,625	16.3%
4	20-49	175	5,197	23.4%
3	10-19	240	3,253	14.6%
2	5-9	390	2,644	11.9%
1	0-4	1,292	2,122	9.6%
Total		2,175	22,212	100.0%

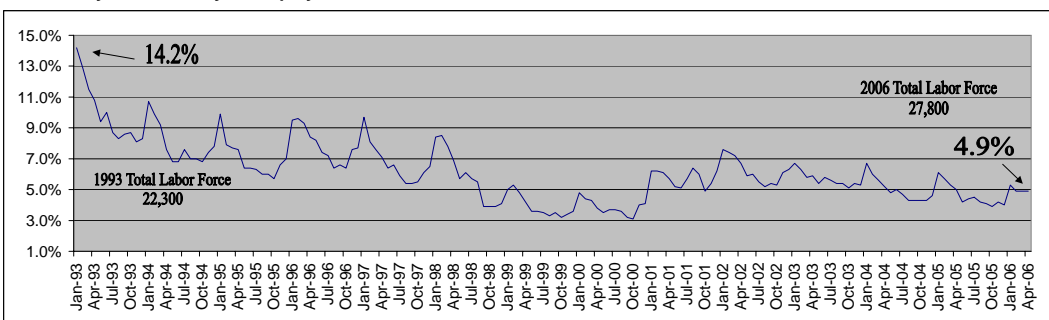
Largest Private Employers - Sep 2005

Employer	Employees	Industry
CASINO FANDANGO	500-599	Casinos
CARSON CITY NUGGET	400-499	Casinos
CHROMALLOY NEVADA	300-399	Aircraft Engines
HEALTHSOUTH	200-299	Spec. Therapists
PINON PLAZA RESORT	200-299	Casino Hotels
COSTCO WHOLESALE CORP	200-299	Warehouse Clubs
HARLEY-DAVIDSON CREDIT CORP	200-299	Sales Financing
PCC STRUCTURALS - CARSON	200-299	Steel Investment
CARSON STATION HOTEL CASINO	200-299	Casino Hotels
MISSION INDUSTRIES	200-299	Linen Supply
WAL-MART STORES, INC.	100-199	Warehouse Clubs
LOWE'S	100-199	Home Centers
SLOTWORLD INC	100-199	Casinos
CAVALLERO HEATING & AIR COND.	100-199	Plumbing/HVAC
MANPOWER TEMPORARY SERVICES	100-199	Temporary Help

Labor Force and Unemployment

	APR 2006	MAR 2006	APR 2005	Monthly Change		Annual Change	
				Total	%	Total	%
Total Labor Force	27,800	27,700	27,300	100	0.4%	500	1.8%
Unemployment	1,400	1,300	1,400	100	7.7%	0	0.0%
Unemployment Rate	4.9%	4.9%	5.0%	*	*	*	*
Total Employment	26,400	26,400	25,900	0	0.0%	500	1.9%

Carson City MSA Monthly Unemployment Rates 1993 to Current



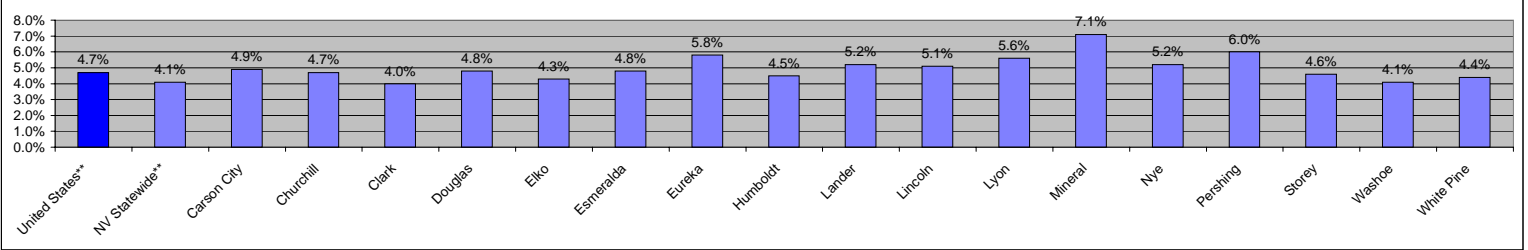
2005 Avg Wages By Industry-OES Survey Data

Industry	Avg. Hourly Wage
Total All Industries	\$17.44
Natural Resources and Mining	N/A
Construction	\$20.02
Manufacturing	\$17.58
Trade, Transportation & Utilities	\$14.90
Information	\$16.37
Financial Activities	\$16.90
Professional & Business Services	\$19.54
Education & Health Services	\$18.75
Leisure & Hospitality	\$9.06
Other Services	\$13.73
Government	\$22.87

Employment data for current month is preliminary and previous month has been revised. All data subject to annual benchmark revisions.

*MSA = Metropolitan Statistical Area / Carson City MSA = Carson City

Current Unemployment Rates By County



Total Labor Force - April 2006

	Total Labor Force	# of Employed	# of Unemployed	Unemp. Rate
Nevada**	1,262,400	1,210,000	52,400	4.1%
Carson City	27,780	26,410	1,370	4.9%
Churchill	12,890	12,290	600	4.7%
Clark	899,110	862,900	36,210	4.0%
Douglas	22,130	21,060	1,070	4.8%
Elko	24,070	23,020	1,050	4.3%
Esmeralda	460	440	20	4.8%
Eureka	710	670	40	5.8%
Humboldt	7,920	7,560	360	4.5%
Lander	2,840	2,690	150	5.2%
Lincoln	1,520	1,440	80	5.1%
Lyon	21,080	19,890	1,190	5.6%
Mineral	2,120	1,970	150	7.1%
Nye	17,050	16,160	890	5.2%
Pershing	2,430	2,280	150	6.0%
Storey	2,190	2,090	100	4.6%
Washoe	213,910	205,110	8,800	4.1%
White Pine	4,270	4,080	190	4.4%
Elko Micropolitan Area***	24,770	23,680	1,090	4.4%

Total Labor Force - April 2005

	Total Labor Force	# of Employed	# of Unemployed	Unemp. Rate
Nevada**	1,214,300	1,163,700	50,600	4.1%
Carson City	27,260	25,900	1,360	5.0%
Churchill	12,420	11,880	540	4.3%
Clark	862,470	827,300	35,170	4.1%
Douglas	21,880	20,910	970	4.4%
Elko	23,370	22,410	960	4.1%
Esmeralda	460	440	20	5.0%
Eureka	680	650	30	4.4%
Humboldt	7,720	7,370	350	4.5%
Lander	2,580	2,460	120	4.5%
Lincoln	1,570	1,490	80	5.2%
Lyon	20,080	19,010	1,070	5.3%
Mineral	2,090	1,960	130	6.1%
Nye	16,160	15,300	860	5.3%
Pershing	2,430	2,300	130	5.4%
Storey	2,080	2,020	60	2.8%
Washoe	206,920	198,300	8,620	4.2%
White Pine	4,210	4,030	180	4.3%
Elko Micropolitan Area***	24,050	23,060	990	4.1%

Labor Force Change (April 2005 to April 2006)

	Change In Total Labor Force		Change In Number of Employed		Change In Number of Unemployed	
	Number	Percent	Number	Percent	Number	Percent
Nevada**	48,100	4.0%	46,300	4.0%	1,800	3.6%
Carson City	520	1.9%	510	2.0%	10	0.7%
Churchill	470	3.8%	410	3.5%	60	11.1%
Clark	36,640	4.2%	35,600	4.3%	1,040	3.0%
Douglas	250	1.1%	150	0.7%	100	10.3%
Elko	700	3.0%	610	2.7%	90	9.4%
Esmeralda	0	0.0%	0	0.0%	0	0.0%
Eureka	30	4.4%	20	3.1%	10	33.3%
Humboldt	200	2.6%	190	2.6%	10	2.9%
Lander	260	10.1%	230	9.3%	30	25.0%
Lincoln	-50	-3.2%	-50	-3.4%	0	0.0%
Lyon	1,000	5.0%	880	4.6%	120	11.2%
Mineral	30	1.4%	10	0.5%	20	15.4%
Nye	890	5.5%	860	5.6%	30	3.5%
Pershing	0	0.0%	-20	-0.9%	20	15.4%
Storey	110	5.3%	70	3.5%	40	66.7%
Washoe	6,990	3.4%	6,810	3.4%	180	2.1%
White Pine	60	1.4%	50	1.2%	10	5.6%
Elko Micropolitan Area***	720	3.0%	620	2.7%	100	10.1%

Employment by Area - 3rd Quarter 2005 (Jul-Sep) Average

	3rd Qtr 2005		3rd Qtr 2004		Total Change	% Change
	3rd Qtr 2005	3rd Qtr 2004	3rd Qtr 2005	3rd Qtr 2004		
Nevada	1,227,497	1,157,007	70,490	6.1%		
Carson City	32,110	31,971	139	0.4%		
Churchill	8,677	8,242	435	5.3%		
Clark	871,507	814,916	56,591	6.9%		
Douglas	22,227	22,285	-58	-0.3%		
Elko	20,493	19,473	1,020	5.2%		
Esmeralda	230	207	23	11.1%		
Eureka	3,907	3,655	252	6.9%		
Humboldt	7,733	7,270	463	6.4%		
Lander	2,107	1,796	311	17.3%		
Lincoln	1,253	1,245	8	0.7%		
Lyon	12,483	11,349	1,134	10.0%		
Mineral	1,717	1,757	-40	-2.3%		
Nye	12,127	11,162	965	8.6%		
Pershing	1,887	1,940	-53	-2.7%		
Storey	1,370	1,070	300	28.0%		
Washoe	215,263	206,879	8,384	4.1%		
White Pine	3,910	3,520	390	11.1%		

Employment By Industry - 3rd Quarter 2005 (Jul-Sep) Average

	Nat. Resources & Mining	Const	Manuf	Trade, Transp. & Utilities	Information	Financial Activities	Profess. & Bus. Svcs	Education & Health Svcs	Leisure and Hospitality	Other Services	Gov't
Nevada	13,347	140,160	48,130	216,207	14,340	65,930	145,803	84,377	334,603	27,010	135,693
Carson City	0	2,493	3,123	4,497	277	1,720	2,530	2,353	4,133	903	10,037
Churchill	273	850	517	1,720	130	313	1,080	760	1,040	150	1,857
Clark	537	104,087	25,127	94,333	10,167	49,997	103,973	57,713	267,710	19,050	83,017
Douglas	197	2,163	1,733	2,767	207	847	1,617	1,027	9,067	370	2,210
Elko	2,017	1,647	180	3,450	173	570	1,033	1,053	6,263	487	3,610
Esmeralda	77	20	*	20	*	0	*	0	*	*	87
Eureka	3,563	*	50	0	0	*	*	40	10	180	
Humboldt	2,163	387	327	1,460	80	113	377	260	1,187	140	1,243
Lander	693	*	*	417	*	27	50	30	207	10	510
Lincoln	20	20	200	27	53	*	20	93	*	593	
Lyon	730	1,587	2,510	2,417	23	293	683	617	1,447	240	1,923
Mineral	67	40	13	123	*	33	*	47	253	10	573
Nye	1,097	1,247	277	1,723	90	343	2,800	567	2,130	197	1,640
Pershing	463	*	93	193	10	30	23	40	183	*	727
Storey	83	127	283	317	*	20	33	*	180	130	187
Washoe	517	23,920	13,857	45,197	2,927	10,937	27,157	19,547	40,013	5,097	25,850
White Pine	777	160	30	523	30	97	103	150	547	60	1,440

Hours and Earnings

	Production Workers (in 000's)			Average Weekly Earnings			Average Weekly Hours			Average Hourly Earnings		
	APR 2006	APR 2005	MAR 2006	APR 2006	APR 2005	MAR 2006	APR 2006	APR 2005	MAR 2006	APR 2006	APR 2005	MAR 2006
Nevada	115,200	103,400	113,400	\$810.64	\$812.39	\$804.79	37.1	37.3	36.9	\$21.85	\$21.78	\$21.81
Construction	115,200	103,400	113,400	\$810.64	\$812.39	\$804.79	37.1	37.3	36.9	\$21.85	\$21.78	\$21.81
Manufacturing	36,500	35,400	36,400	\$619.29	\$591.23	\$603.26	39.8	39.6	39.3	\$15.56	\$14.93	\$15.35
Durable Goods	25,600	24,700	25,500	\$629.64	\$603.90	\$610.74	39.6	39.6	39.1	\$15.90	\$15.25	\$15.62
Non-durable Goods	10,900	10,700	10,900	\$593.35	\$560.90	\$587.33	40.2	39.5	39.9	\$14.76	\$14.20	\$14.72
Wholesale Trade	31,900	30,100	31,700	\$604.68	\$599.31	\$592.62	36.1	36.3	35.7	\$16.75	\$16.51	\$16.60
Retail Trade	116,300	110,000	115,600	\$434.34	\$424.76	\$435.02	34.2	34.2	34.2	\$12.70	\$12.42	\$12.72
Las Vegas-Paradise MSA	87,900	80,200	86,600	\$886.03	\$870.36	\$880.30	37.8	38.7	37.7	\$23.44	\$22.49	\$23.35
Construction	87,900	80,200	86,600	\$886.03	\$870.36	\$880.30	37.8	38.7	37.7	\$23.44	\$22.49	\$23.35
Manufacturing	20,400	19,600	20,300	\$589.82	\$587.33	\$582.59	39.4	39.9	39.1	\$14.97	\$14.72	\$14.90
Wholesale Trade	18,900	17,500	18,700	\$636.79	\$633.71	\$624.46	38.5	38.5	38.1	\$16.54	\$16.46	\$16.39
Retail Trade	83,400	79,400	83,400	\$450.57	\$445.99	\$452.57	34.5	34.6	34.6	\$13.06	\$12.89	\$13.08

Seasonally Adjusted Employment (Statewide Only)

Employment In Thousands	Mar-05	Apr-05	May-05	Jun-05	Jul-05	Aug-05	Sep-05	Oct-05	Nov-05	Dec-05	Jan-06	Feb-06	Mar-06	Apr-06
Total All Industries	1199.4	1216.1	1217.9	1223.8	1229.2	1230.5	1239.3	1247.6	1250.7	1256.6	1258.1	1264.5	1269.4	1279.2
Natural Resources and Mining	10.2	10.7	10.5	10.6	10.6	10.7	10.8	11.0	11.2	11.2	11.2	11.2	11.1	11.1
Construction	130.1	132.6	133.3	133.8	136.1	137.4	139.3	141.8	142.1	143.9	144.1	145.8	146.2	147.2
Manufacturing	47.6	47.8	47.5	47.7	47.7	47.5	48.1	48.3	48.4	48.4	48.6	48.7	48.8	49.1
Trade, Transportation & Utilities	212.3	213.4	213.8	214.5	216.1	216.6	218.3	219.1	219.4	219.7	220.1	221.8	223.9	225.3
Retail	130.1	130.5	130.6	131.0	132.4	132.7	133.6	133.9	134.0	134.2	135.7	136.7	137.6	137.8
Information	14.4	14.9	15.4	14.7	14.5	14.4	14.1	14.4	14.4	14.4	14.5	14.4	14.3	14.5
Financial Activities	64.0	64.2	64.6	65.0	65.0	65.5	66.0	66.7	66.9	67.3	67.5	67.6	67.4	67.6
Professional & Business Services	142.2	143.4	143.6	144.6	145.1	145.2	146.0	147.1	147.9	149.3	150.7	151.0	153.3	156.1
Education & Health Services	83.4	84.0	84.2	84.7	84.8	84.9	85.0	85.5	85.7	86.3	86.4	87.0	87.3	87.6
Leisure & Hospitality	319.3	328.3	327.8	330.5	330.8	330.1	332.5	332.9	333.2	333.8	333.7	334.5	334.4	336.4
Casino Hotels and Gaming	207.9	215.5	215.3	217.2	217.0	216.6	217.4	217.8	217.9	218.4	218.7	219.5	217.0	217.2
Other Services	33.0	33.6	33.8	34.1	34.6	34.8	35.1	35.7	35.9	36.2	36.4	36.9	36.1	36.5
Government	142.9	143.2	143.4	143.6	143.9	143.4	144.1	145.1	145.6	146.1	145.9	146.6	146.6	147.8

Employment data for current month is preliminary and previous month has been revised. All data subject to annual benchmark revisions.
 * Indicates Data Suppressed Due To Confidentiality. **The United States and Nevada statewide unemployment rates are seasonally adjusted.
 *** Elko Micropolitan Statistical Area = Elko and Eureka Counties

State of Nevada
Department of Employment, Training & Rehabilitation
Research & Analysis Bureau
500 E. Third Street
Carson City, NV 89713-0001

Nevada Economy In Brief

The Nevada Economy in Brief provides a wealth of Nevada workforce and economic information and is published monthly by the Nevada Department of Employment, Training and Rehabilitation / Research and Analysis Bureau. Material contained in this publication is produced in cooperation with the U.S. Department of Labor (Bureau of Labor Statistics and the Employment and Training Administration) and may be reproduced without permission. Please credit Nevada Department of Employment, Training and Rehabilitation. For additional workforce or other economic information, a free subscription to the Nevada Economy in Brief, or to change your mailing address, please contact the Research and Analysis Bureau.

Phone (775) 684-0450
Fax (775) 684-0342
E-mail detrlmi@nvdetr.org

Websites
www.nevadaworkforce.com
www.nevadajobconnect.com
www.nvdetr.org

