

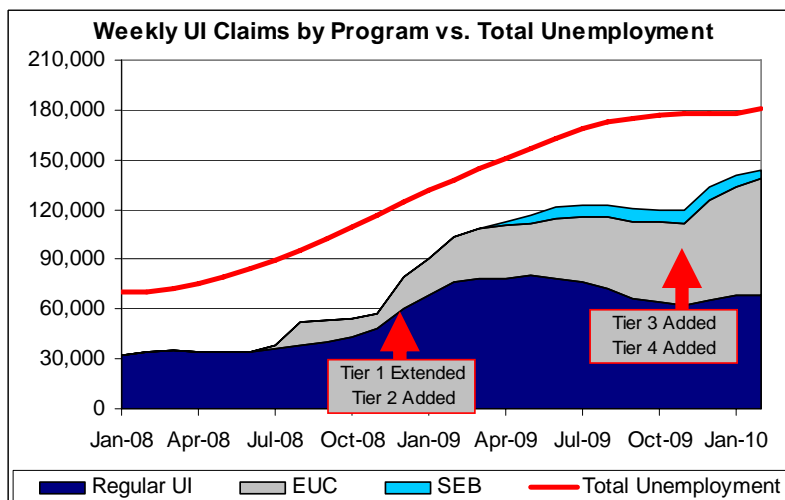


Nevada Unemployment Claims Summary February 2010

Nevada	Feb-10	Jan-10	1-Month Change	Feb-09	1-Year Change
Initial Claims	23,372	30,190	-22.58%	28,640	-18.39%
First Payments	12,535	15,577	-19.53%	18,522	-32.32%
Continued Claims	270,946	309,295	-12.40%	296,491	-8.62%
Weeks Compensated	255,369	290,344	-12.05%	283,413	-9.90%
Final Payments	7,933	9,534	-16.79%	5,954	33.24%
Exhaustion Rate	63.36%	63.47%	-0.19%	49.69%	27.51%
Average Duration	18.64	18.17	2.56%	13.75	35.56%

Source: ETA 5-159

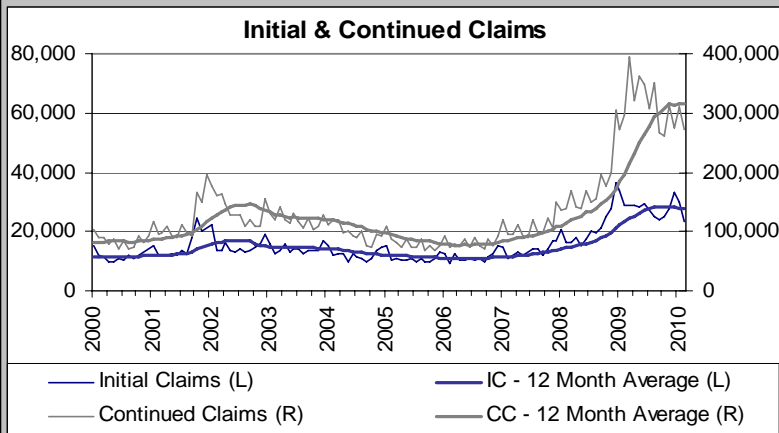
- New unemployment claims continue to come in at a slower pace than the previous year, though at an overall level that remains very high.
- Over half of all claimants receiving unemployment benefits received payments through an extended benefit program.
- Historical trend lines now reflect comparisons to 2009, which increased their level by 50%. As unemployment claims have been growing at a slower pace or falling, the result is that claims are now coming in below the trend levels and are expected to remain below for the near future.
- At 23,372, initial claims are at their lowest level since September 2008, which continues to put some downward pressure on claims.



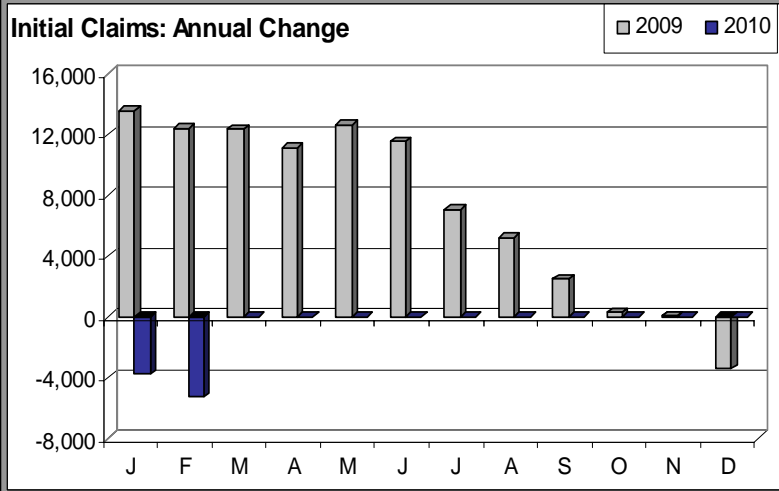
UI Extensions	EUC Tier 1	EUC Tier 2	EUC Tier 3	EUC Tier 4	SEB
First Payments	6,302	6,107	9,729	6,280	1,187
Weeks Paid	120,097	73,135	80,588	18,550	19,684
Benefits Paid	38,030,120	22,995,308	25,008,508	5,377,979	5,960,173

Initial & Continued Claims

February 2010

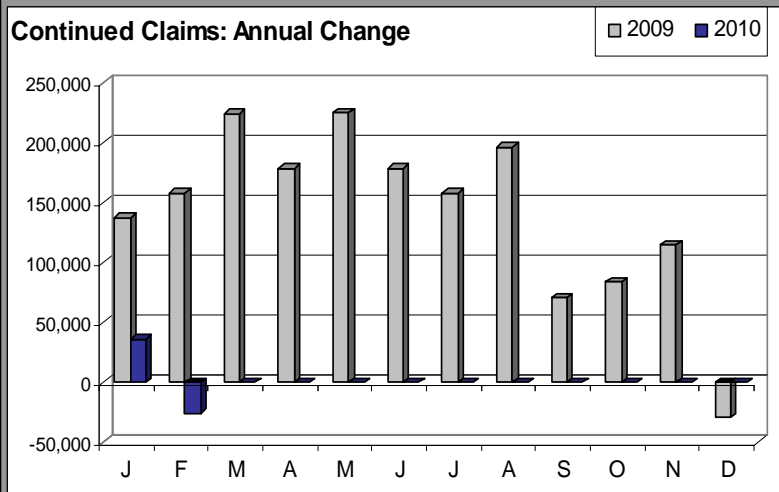
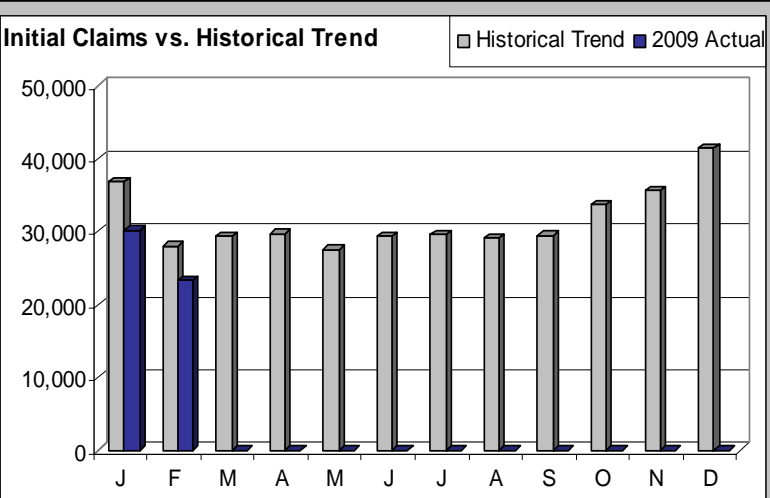


- ← Initial and continued claims have plateaued somewhat below their peak levels, but have yet to see any significant drop in activity. Job losses are continuing, but no longer accelerating.
- ← Elevated levels of initial claims will continue to support high levels of continued claims, but continued claims are unlikely to challenge their peaks without some new deterioration in claims activity.
- ← At their February 2009 levels, initial claims remain 105% above their average from 2003-2007. Continued claims are 178% above those years.



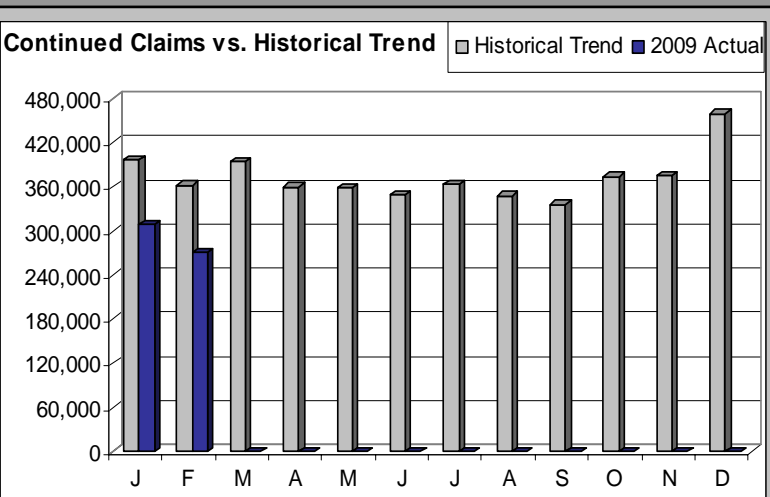
- ← Initial claims continue to fall compared to year-ago levels, with February's decline of over 5,000 being the largest downward shift yet.

→ Initial claims in February fell to their lowest monthly total since September 2008, with the decline from January to February being consistent with regular seasonal patterns.



- ← Continued claims fell over the month and over the year, in contrast with February 2009 when continued claims rose from January to February.

→ Claims fell from January to February, remaining well below the normal growth trend in claims, though claims remain at a high level overall.



County-Specific Data

February 2010



February 2010	Churchill	Clark	Douglas	Elko	Esmeralda	Eureka	Humboldt	Lander	Lincoln	Lyon	Mineral	Nye	Carson	Pershing	Storey	Washoe	White Pine
Average Duration	17.8	20.3	19.3	17.9	20.0	18.8	18.8	19.8	18.4	19.6	13.5	21.1	20.2	18.3	20.5	20.8	19.8
Exhaustion Rate	48.5%	59.8%	60.7%	48.3%	67.6%	68.1%	44.7%	53.3%	62.5%	60.4%	66.1%	67.2%	59.9%	62.1%	65.3%	59.6%	60.9%
Annual First Payments	1,244	116,759	2,264	1,571	58	47	550	217	144	3,369	245	2,075	3,209	165	89	23,849	293
Annual Final Payments	656	76,328	1,435	820	48	32	305	130	75	2,325	109	1,545	2,173	108	64	16,297	199
Annual Weeks Paid	22,111	2,365,947	43,696	28,106	1,160	883	10,316	4,286	2,656	66,068	3,299	43,809	64,760	3,022	1,828	495,816	5,816
Change in Avg Duration	19.8%	38.4%	22.6%	42.0%	43.0%	8.9%	52.7%	35.5%	10.9%	27.2%	-33.0%	24.9%	34.5%	6.9%	34.6%	37.5%	53.1%
Change in Exh Rate	11.8%	22.2%	20.3%	41.0%	-2.3%	18.3%	3.2%	6.6%	18.1%	26.2%	10.8%	18.1%	25.0%	11.5%	35.1%	28.5%	40.9%
Fed EB Exhaustions*	1,178	125,793	2,527	1,339	71	62	496	229	129	4,011	251	2,973	3,844	186	104	27,540	320

Note: The data for first payments and final payments, and the calculations for exhaustion rate, average duration, and average benefit are similar to those used for statewide monthly numbers, but are not directly comparable. Data source: AR 6. * Total Exhaustions since May 2007, potentially eligible for Federal Extended Benefits.

Regional Industries - Highest Claim Volume

Initial Claims							
Northern Metro		Southern Metro		Northern Rural		Southern Rural	
Construction	565	Accommodation & Food Services	2,150	Accommodation & Food Services	68	Construction	41
Retail Trade	350	Construction	1,924	Construction	63	Retail Trade	25
Administrative Support and Waste Management Services	341	Retail Trade	992	Retail Trade	53	Accommodation & Food Services	24
Continued Claims							
Northern Metro		Southern Metro		Northern Rural		Southern Rural	
Construction	14,375	Construction	55,840	Construction	1,939	Construction	1,357
Administrative Support and Waste Management Services	5,663	Accommodation & Food Services	32,471	Accommodation & Food Services	708	Accommodation & Food Services	413
Accommodation & Food Services	5,385	Administrative Support and Waste Management Services	16,299	Administrative Support and Waste Management Services	700	Retail Trade	335

- Nye County remains the hardest-hit county with regards to UI activity. It has the highest average duration of benefits, and the highest exhaustion rate among counties with a significant number of overall claims. Nye county has a particularly high concentration of claims from the construction industry: 31.5% of claims, the highest such concentration in the state.
- Only Elko, Churchill, Humboldt and Lander counties are experiencing significantly lower UI activity than the rest of the state, and even these counties are at levels that are comparable with the very worst counties when the economy was booming.
- The construction industry continues to be a dominant source of claims overall in the state, with the construction industry representing more claims in February in each region of the state than the 2nd and 3rd largest contributors combined.

12-Month Distribution of Continued Claims by Industry within Counties

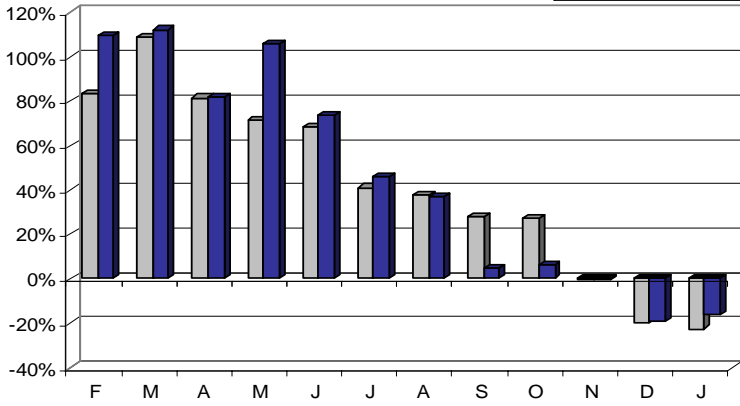
	Carson	Churchill	Clark	Douglas	Elko	Esmeralda	Humboldt	Lander	Lincoln	Lyon	Mineral	Nye	Other	Pershing	Storey	Washoe	White Pine
Agriculture, Forestry, Fishing & Hunting	0.2%	0.7%	0.0%	0.1%	0.5%	0.0%	0.9%	2.1%	0.4%	1.0%	0.3%	0.9%	0.2%	4.6%	0.0%	0.1%	0.4%
Mining	0.5%	2.0%	0.1%	0.6%	12.5%	19.3%	18.4%	19.6%	3.4%	1.8%	5.7%	1.8%	1.5%	29.0%	0.0%	0.4%	12.4%
Utilities	0.1%	2.2%	0.0%	0.2%	0.1%	0.0%	0.2%	0.3%	0.2%	0.1%	0.0%	0.4%	0.1%	0.0%	0.0%	0.2%	0.0%
Construction	20.1%	24.9%	25.2%	19.7%	18.6%	22.0%	9.6%	17.8%	24.9%	23.1%	12.8%	31.5%	27.4%	12.4%	14.7%	20.3%	14.5%
Manufacturing	25.1%	20.7%	12.7%	18.4%	13.6%	8.1%	15.3%	13.3%	11.9%	23.9%	10.8%	14.5%	10.9%	16.6%	15.8%	20.0%	14.4%
Wholesale Trade	1.9%	1.4%	2.4%	2.0%	3.2%	1.3%	1.8%	2.4%	2.9%	2.6%	3.0%	2.2%	2.2%	1.3%	0.2%	3.8%	1.1%
Retail Trade	10.6%	11.1%	9.4%	9.7%	11.3%	5.2%	13.4%	12.5%	7.6%	11.5%	6.1%	9.8%	8.0%	8.7%	12.1%	12.3%	14.6%
Transportation & Warehousing	1.9%	3.6%	3.5%	2.3%	3.5%	2.4%	4.5%	3.0%	2.6%	3.1%	2.5%	1.9%	3.5%	1.2%	4.9%	5.2%	4.6%
Information	0.8%	0.7%	1.0%	0.6%	0.4%	0.0%	0.8%	0.0%	0.6%	0.3%	0.0%	0.5%	1.1%	0.0%	1.1%	1.0%	0.0%
Finance & Insurance	2.5%	0.7%	1.9%	2.0%	2.0%	0.0%	0.9%	0.7%	0.8%	1.7%	0.7%	0.9%	1.8%	2.1%	2.4%	1.8%	0.9%
Real Estate and Rental Leasing	1.4%	1.4%	2.7%	1.8%	0.7%	0.2%	0.0%	0.5%	0.7%	1.2%	0.1%	1.2%	1.7%	0.4%	0.0%	1.6%	0.7%
Professional Scientific & Technical Services	2.8%	1.9%	3.9%	3.0%	2.2%	2.4%	2.7%	0.4%	1.3%	1.8%	3.8%	4.3%	3.3%	0.3%	1.8%	3.9%	2.5%
Management of Companies and Enterprises	0.3%	0.2%	0.7%	0.4%	0.1%	0.0%	0.0%	0.0%	0.0%	0.3%	0.0%	0.2%	0.9%	0.0%	0.0%	0.4%	0.0%
Administrative Support and Waste Management Services	9.3%	9.2%	10.1%	7.8%	3.9%	10.1%	7.5%	5.4%	8.5%	9.1%	27.7%	8.2%	6.9%	1.1%	6.8%	8.7%	3.0%
Educational Services	0.9%	0.9%	1.0%	1.4%	0.5%	1.2%	1.1%	0.4%	3.9%	0.8%	1.8%	2.7%	1.0%	0.8%	0.2%	1.1%	2.5%
Health Care and Social Assistance	3.4%	5.0%	2.7%	3.8%	3.6%	3.1%	3.2%	1.5%	4.3%	3.2%	2.4%	3.0%	2.7%	7.2%	0.0%	3.5%	5.5%
Arts, Entertainment & Recreation	3.7%	2.1%	1.5%	3.6%	2.7%	0.3%	1.0%	1.4%	3.3%	3.3%	6.6%	3.1%	1.8%	1.1%	14.2%	2.0%	0.3%
Accommodation & Food Services	6.4%	4.9%	17.4%	15.7%	10.5%	13.9%	9.9%	10.1%	10.6%	4.9%	4.2%	8.6%	16.6%	5.3%	20.6%	9.0%	12.1%
Other Services	3.5%	2.3%	1.6%	1.5%	2.5%	2.8%	3.2%	1.0%	1.0%	1.8%	0.2%	1.4%	1.1%	0.4%	0.9%	1.8%	1.3%
Public Administration	3.5%	3.7%	1.3%	3.4%	5.7%	4.2%	4.4%	6.2%	9.4%	3.2%	1.5%	1.4%	6.9%	2.1%	2.0%	2.0%	8.2%
N/A	0.8%	0.6%	0.9%	2.1%	1.9%	3.5%	1.1%	1.2%	1.8%	1.3%	1.2%	1.5%	5.8%	0.6%	2.1%	1.0%	0.9%

National Perspective

January 2010

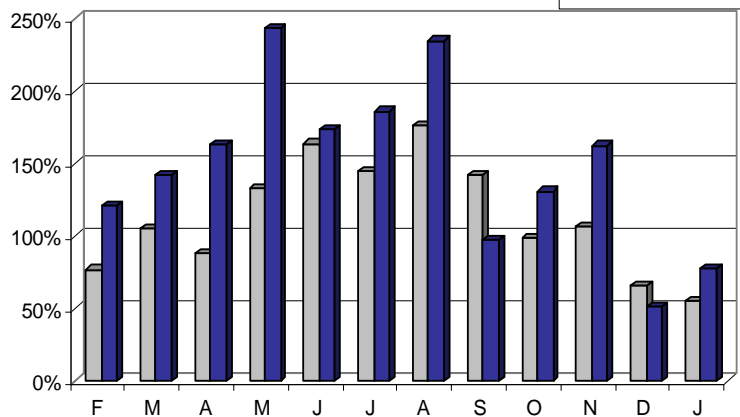


First Payments: Annual Change, Last 12 Months U.S. Nevada



- ← At both the state and national levels, new unemployment claims remain lower than a year ago, when growth in claims was peaking.
- ← While employment conditions remain very weak, the peak in new unemployment activity this recession appears to be passing.
- ← Falling levels of new unemployment claims should lead to falling levels of weekly and final payments over the next 3-6 months.

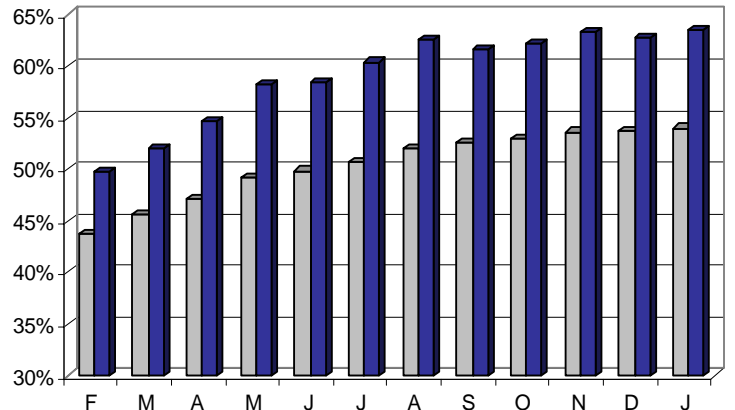
Final Payments: Annual Change, Last 12 Months U.S. Nevada



- ← The slower growth in new claims experienced in the middle of 2009 is now being reflected in slowing growth of final payments, which remained consistent with the levels seen in December.

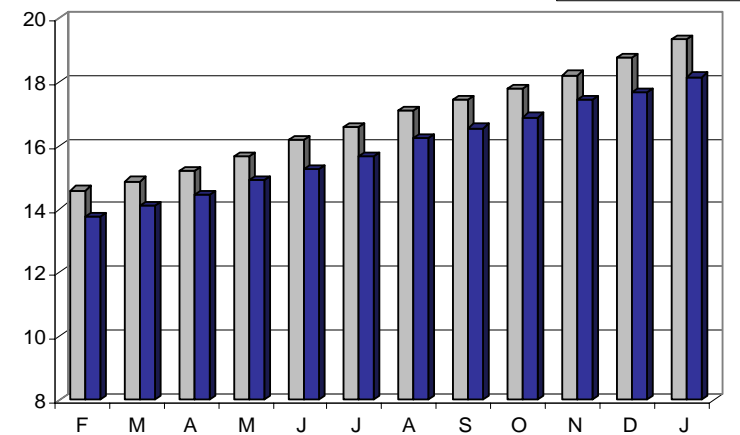
→ The rate of benefit exhaustion has levelled off in recent months, with Nevada holding steady around 63% and the nation at about 54%.

Exhaustion Rate: Last 12 Months U.S. Nevada



- ← The duration of benefits continues to increase, reflecting the shifting population of unemployment benefits to those who began filing during the peak of new claim activity.

Average Weeks of Benefits: Last 12 Months U.S. Nevada



→ Nevada's average weekly benefit calculation is being affected by a reporting change in February 2009, which is distorting the chart to the right.

Average Weekly Benefit: Last 12 Months U.S. Nevada

