

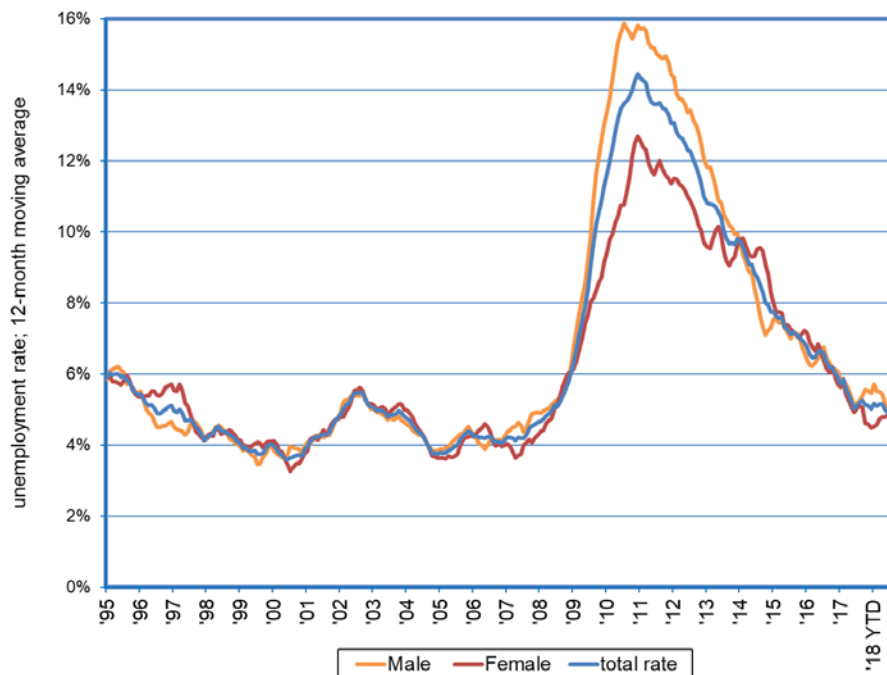
Research Notes



Unemployment Rate by Gender
Dionny McDonnell, Economist

Note: 2018:134
November 14, 2018

Gap Between Male/Female Unemployment Rate Continues to Decline



- Information from the monthly Current Population Survey (CPS), sponsored by the Census Bureau and the Bureau of Labor Statistics, allows for the analysis of the unemployment rate by gender. CPS estimates for these two series are available since 1994.
- In Nevada, from 1995 to 2006 the male unemployment rate and the female unemployment rate ranged between three percent and six percent (expressed as a 12-month moving average).
- Due to the 2007 recession effects, beginning in late-2007, both unemployment rates started to increase. In mid-2010 the male unemployment rate peaked at 15.9 percent. The female unemployment rate reached its peak in late 2010 at 12.7 percent.
- For the year ending in October 2018, the male unemployment rate in the Silver State stands at 4.5 percent, and the female rate comes in at 4.7 percent. The overall unemployment rate is 4.6¹ percent. Based upon trends over the past few years, the gap between men and women has improved, despite some random volatility.

¹ It should be noted that utilizing information solely from the CPS results in a slightly different total unemployment rate than what is officially reported. The State's official rate incorporates information regarding job trends and unemployment insurance claims activity into the calculation, in addition to CPS results.