

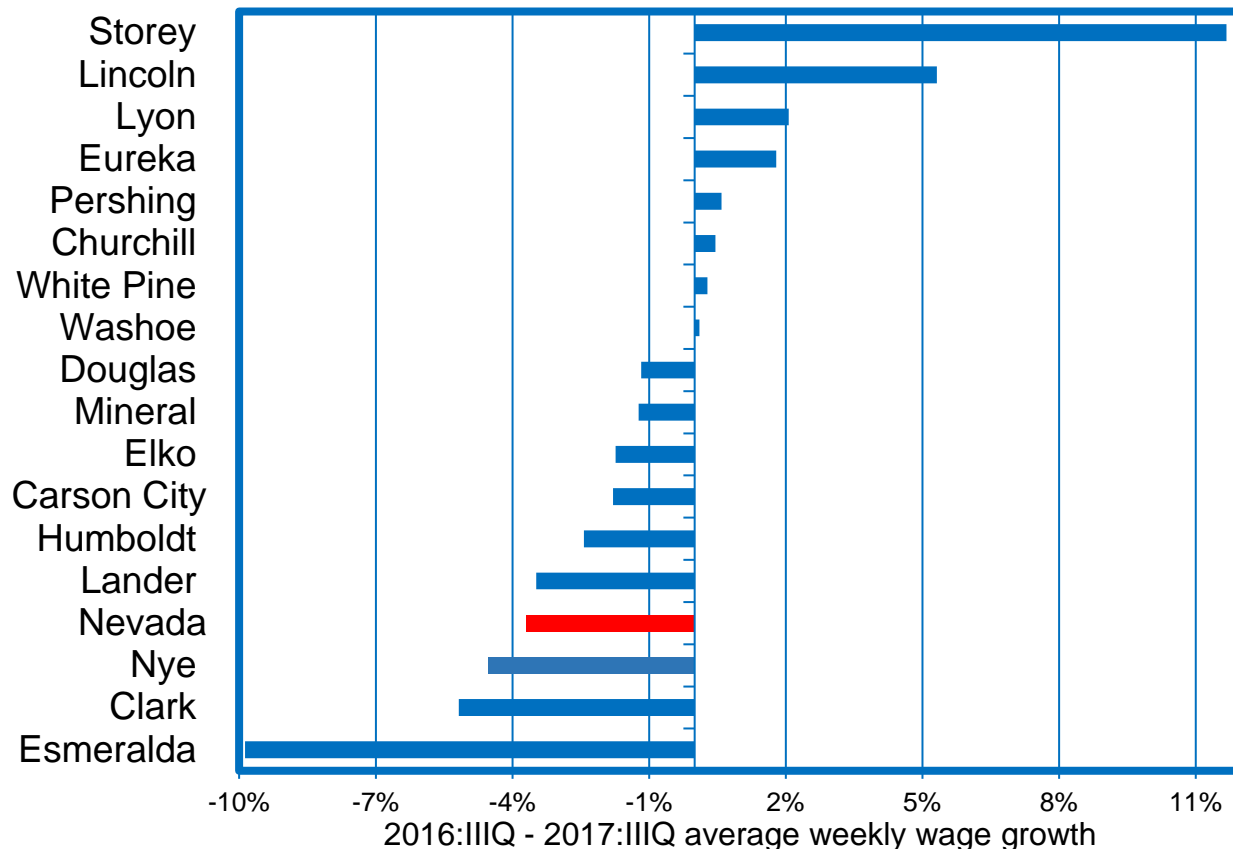
Research Notes



County Weekly Wages 2017:IIIQ-Part II
Cody Lewallen, Economist

Note: 2018:46
March 30, 2018

Storey County Sees Strong Wage Growth Driven By Manufacturing and Construction



- In the Quarterly Census of Employment and Wages (QCEW) Program, the Research and Analysis Bureau collects and compiles employment and wage data for workers covered by Nevada unemployment insurance laws, and federal civilian workers covered by Unemployment Compensation for Federal Employees.
- The most recent QCEW information shows that average weekly wages in Nevada as a whole decreased 3.7 percent in quarter three of 2017, relative to the same period in the 2016. This decrease is likely due to the abnormally strong third quarter in 2016, resulting from the early payout of bonuses normally seen in the fourth quarter.
- Change in weekly wages range from -9.9% (Esmeralda) to 11.7% (Storey). In the latter, growth is being driven by construction and manufacturing. Eight of 17 counties experienced an increase in average weekly wages in this year's third quarter.
- As for Nevada's major population centers, Carson City (-1.8%) fell slightly and Washoe County (0.1%) stayed about the same as 2016. Wages in Clark County (-5.2%) fell significantly.