

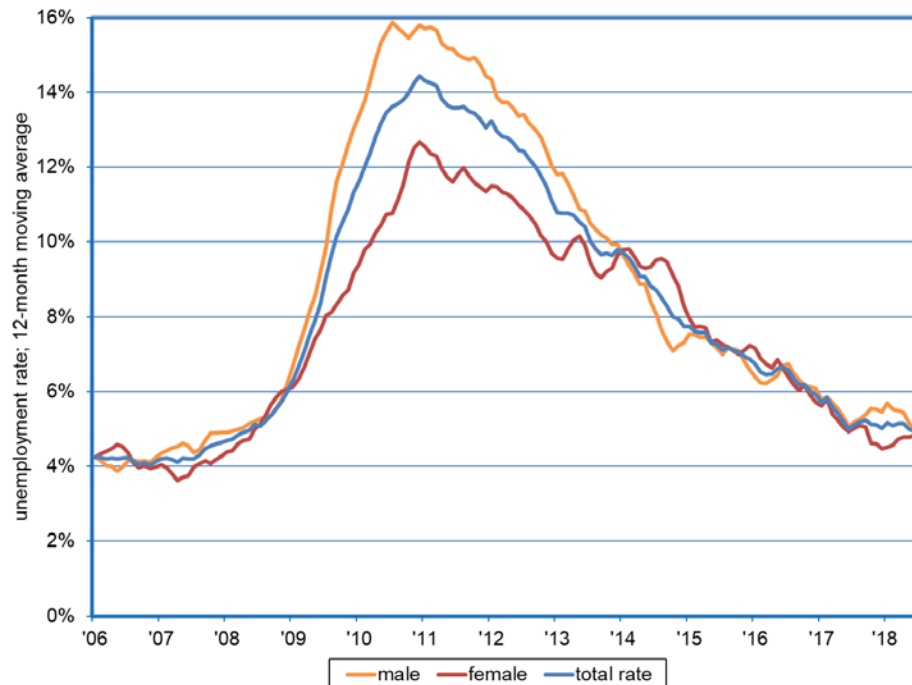
Research Notes



Unemployment Rate by Gender
Dionny McDonnell, Economist

Note: 2018:96
August 13, 2018

Gap Between Male/Female Unemployment Rate Continues to Decline



- Information from the monthly Current Population Survey (CPS), sponsored by the Census Bureau and the Bureau of Labor Statistics, allows for the analysis of the unemployment rate by gender.
- In 2006 both male and female unemployment rates hovered around four percent in Nevada. However, beginning in late-2007, both rates started to increase.
- In mid-2010 the male unemployment rate peaked at 15.9 percent (expressed as a 12-month moving average), while the female unemployment rate reached its peak in late 2010 at 12.7 percent. The differing results by gender are certainly a reflection of the negative impact of the recession on the construction sector in the Silver State, a male-dominated industry (men account for nearly 80 percent of construction employment). In part, the improvement in construction employment has helped to reduce the gap between the unemployment rate for men and women.
- As of July 2018, the male unemployment rate in the Silver State stands at 4.7 percent, and the female rate comes in at 4.8 percent. The overall unemployment rate is 4.7¹ percent. Based upon trends over the past few years, the gap between men and women has improved, despite some random volatility. Much of the difference in unemployment rates by gender is due to the distribution of male/female employment across different industries.

¹ It should be noted that utilizing information solely from the CPS results in a slightly different total unemployment rate than what is officially reported. The State's official rate incorporates information regarding job trends and unemployment insurance claims activity into the calculation, in addition to CPS results.