

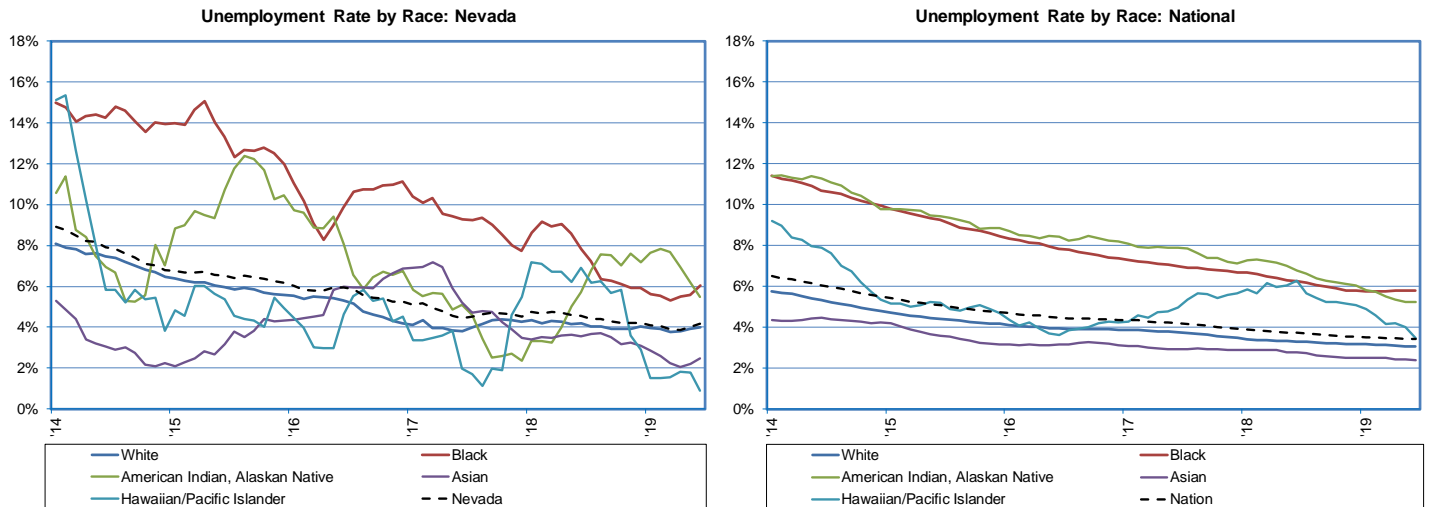
# Research Notes



Unemployment Rate by Race  
Michael La Rue, Economist

Note: 2019:74  
July 12, 2019

## Unemployment Rates in Nevada Trend Similarly to Unemployment Rates in the Nation



- Data from the monthly Current Population Survey (CPS), sponsored by the Census Bureau and the Bureau of Labor Statistics (BLS) permits for the analysis of the unemployment rate by race in Nevada compared to the nation. CPS estimates are available since 2013, and are examined from January 2014 to June 2019 using a 12-month moving average. A moving average is used to account for some of the volatility in the data caused by small sample sizes.
- For both the Nation and Nevada the total unemployment rates have been declining over the period examined. The Nation has gone from 6.5 percent in January 2014 to 3.4 percent in June 2019. Nevada has seen a larger decline from 8.9 percent to 4.2 percent over the same time.
- Nationally, Asians tend to have a lower unemployment rate than the total rate, and went from 4.4 percent to 2.4 percent over the time examined. In Nevada a similar trend is seen, but the smaller sample size causes more volatility in the Nevada trends. The unemployment rate went from approximately 5.3 percent to 2.5 percent over the time examined.
- Blacks in Nevada have tended to have a higher unemployment rate, but have seen one of the largest decreases in unemployment from 15.0 percent to 6.0 percent over the time examined. Additionally, the difference between the black rate and the state rate has decreased from a difference of 6.1 percent to a difference of 1.8 percent. Nationally, similar trends have been seen with a decrease from 11.4 percent to 5.8 percent.

Continued next page.

# Research Notes



- Hawaiian/Pacific Islander in Nevada have a small sample size that is causing volatility in the estimates. Despite the volatility the trend in unemployment rates for both the Nation and State is decreasing. In Nevada, this is the lowest rate at approximately 0.9 percent in June 2019 decreasing from 15.1 percent in January 2014. Nationally a similar trend is followed decreasing from approximately 9.2 percent to approximately 3.5 percent over the same time.
- American Indian, Alaskan Native nationally, have a downward trend in unemployment going from 11.4 percent to 5.2 percent from January 2014 to June 2019. In Nevada, the trend has also been downward going from approximately 10.6 percent to approximately 5.5 percent.
- Both Nationally and in Nevada the trend in unemployment for whites has been a decrease going from 8.1 percent to 4.0 percent in Nevada, and from 5.8 percent to 3.1 percent in the Nation.
- Nevada Job Connect offers services for veterans including help with job searches, resume preparation, interview skills, resource centers, skills assessment, proficiency testing, training, and potential purchase of work related items required for a new job. Their website has more information at <http://www.nevadajobconnect.com/>.

This workforce product was funded by a grant awarded by the U.S. Department of Labor's Employment and Training Administration. The product was created by the recipient and does not necessarily reflect the official position of the U.S. Department of Labor. The U.S. Department of Labor makes no guarantees, warranties, or assurances of any kind, express or implied, with respect to such information, including any information on linked sites and including, but not limited to, accuracy of the information or its completeness, timeliness, usefulness, adequacy, continued availability, or ownership. This product is copyrighted by the institution that created it. Internal use by an organization and/or personal use by an individual for non-commercial purposes is permissible. All other uses require the prior authorization of the copyright owner.