

Labor Force: Measures and Demographics

Nevada, Neighbor States, and U.S. May 2025

Dionny McDonnell, Economist
Research & Analysis Bureau
Department of Employment, Training and Rehabilitation

June 26, 2025

Table of content

- Introduction.....4
- Labor Market Performance Measures5
- Table 1. Labor Force Participation Rate.....7
- Table 2. Unemployment Rate.....9
- Table 3. Employment-Population Ratio.....11
- Labor Market Demographics. Population Composition.....12
- Labor Force Participation Rate by Age Groups.....13
- Table 4. Teenagers Population Share.....14
- Table 5. Young Adults Population Share.....16
- Table 6. Prime Working Age Population Share.....18
- Table 7. Retirement Age Population Share.....20
- Table 8. Teenagers Labor Force Participation Rate.....22

Table of content continuation

- Table 9. Young Adults Labor Force Participation Rate.....24
- Table 10. Prime Working Age Labor Force Participation Rate.26
- Table 11. Retirement Age Labor Force Participation Rate....28
- Unemployment Rate by Age Groups.....30
- Table 12. Teenagers Unemployment Rate.....31
- Table 13. Young Adults Unemployment Rate.....33
- Table 14. Prime Working Age Unemployment Rate.....35
- Table 15. Retirement Age Unemployment Rate.....37
- Employment-Population Ratio by Age Groups.....39
- Table 16. Teenagers Employment-Population Ratio.....40
- Table 17. Young Adults Employment-Population Ratio.....42
- Table 18. Prime Working Age Employment-Population Ratio....44
- Table 19. Retirement Age Employment-Population Ratio.....46

Introduction

- This presentation analyses the labor force performance measures in Nevada and compares them with its neighbor States (Arizona, California, Idaho, Oregon, and Utah) and the U.S. The labor force analysis is based on seasonally adjusted estimates from the Local Areas Unemployment Statistics (LAUS) and the Demographics analysis is based on not seasonally adjusted estimates from the Current Population Survey (CPS) DEMECON (Demographics and Economics) tables.
- Statistics based on the CPS are subject to both sampling and non-sampling error. When a sample, rather than the entire population is surveyed, there is a chance that the sample estimates may differ from the true population values they represent. The component of this difference that occurs because samples differ by chance is known as sampling error, and its variability is measured by the standard error of the estimate.
- The Bureau of Labor Statistics (BLS) analyses are generally conducted at the 90-percent level of confidence. This means that, there is about a 90-percent chance, or level of confidence, that an estimate based on a sample will differ by no more than 1.6 standard errors from the true population value because of sampling error.
- The monthly CPS data are also affected by non-sampling error. Non-sampling error can occur for many reasons, including the following: -failure to sample a segment of the population, -inability to obtain information for all respondents in the sample, -inability, or unwillingness of respondents to provide correct information, -errors made in the collection or processing of the data.
- General information on the reliability of data from the CPS is available at: www.bls.gov/cps/documentation.htm#reliability.

Labor Market Performance Measures - LAUS

- **Labor Force Participation Rate:** In May 2019, Nevada had a labor force participation rate (LFPR) of 64.1%, the third highest in the region. In comparison, the U.S. LFPR was 62.9%.

In May 2024, the LFPR in the Silver State declined to 62.8%, the third highest in the region. Nationwide the LFPR also declined to 62.6%.

In May 2025, the LFPR was practically unchanged in the Silver State at 63.0%, the third highest in the region. The U.S. LFPR declined to 62.4%.

- **Unemployment Rate:** In May 2019, Nevada's UR was 4.1%, the second highest in the region. In comparison, the UR nationwide was 3.6%.

In May 2024 the UR in Nevada rose to 5.5%, the highest rate in the region. Nationwide the UR rose to 4.0%.

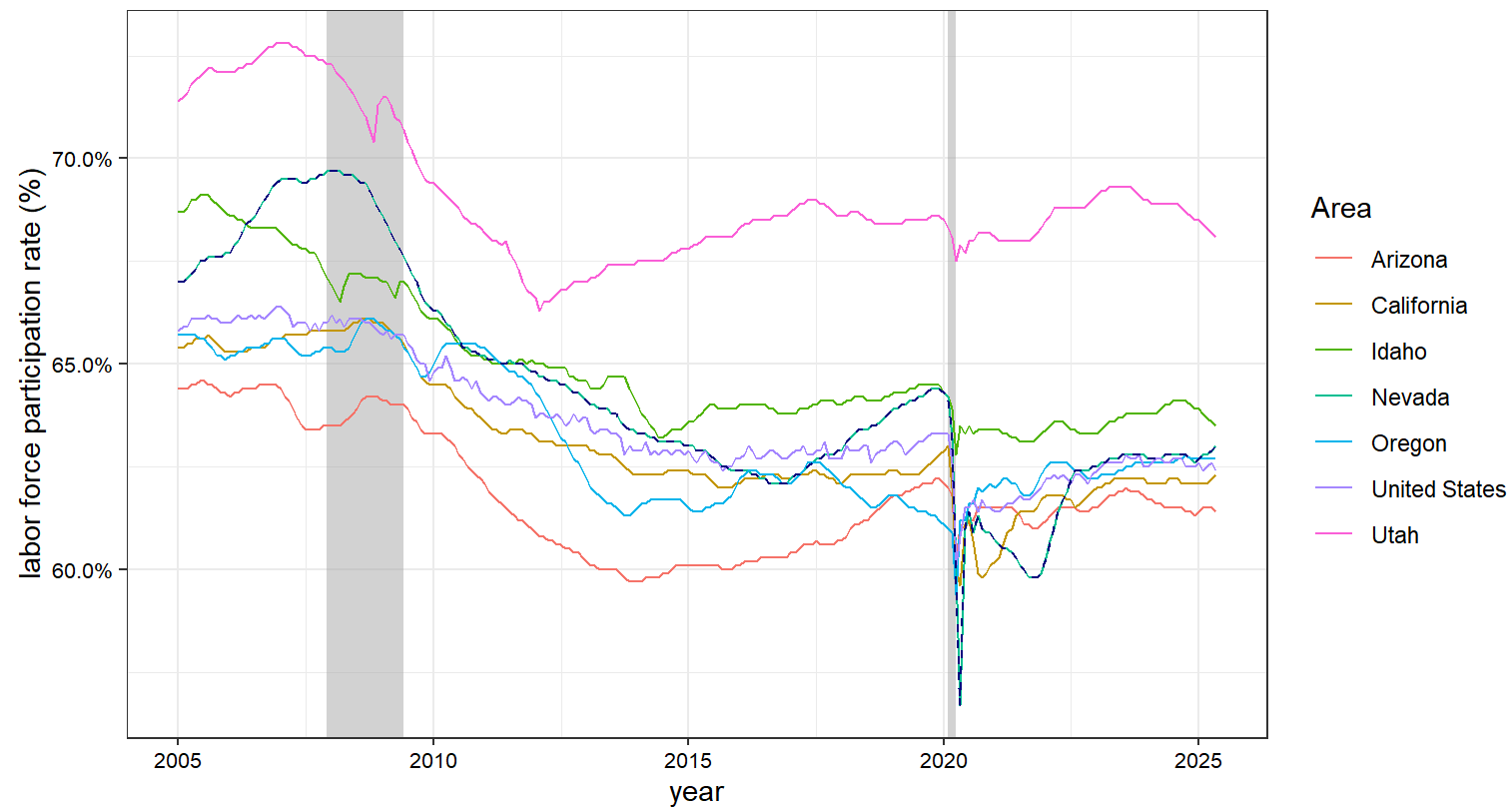
In May 2025, the UR in the Silver State was 5.5%, the highest in the region, and it exceeded the national rate of 4.2%.

- **Employment-Population Ratio:** In May 2019, Nevada had an EPRATIO of 61.4%, the third highest in the region, and it was higher compared to the U.S. EPRATIO of 60.6%.

In May 2024, the EPRATIO in the State declined to 59.3%, the second lowest in the region. Nationwide the EPRATIO declined to 60.1%.

In May 2025, the EPRATIO in Nevada rose to 59.5%, the third lowest in the region. In the U.S. the EPRATIO declined to 59.7%.

Figure 1. Labor Force Participation Rate



Note: Dashed line is Nevada. Source: Local Area Unemployment Statistics (LAUS) (seasonally adjusted)

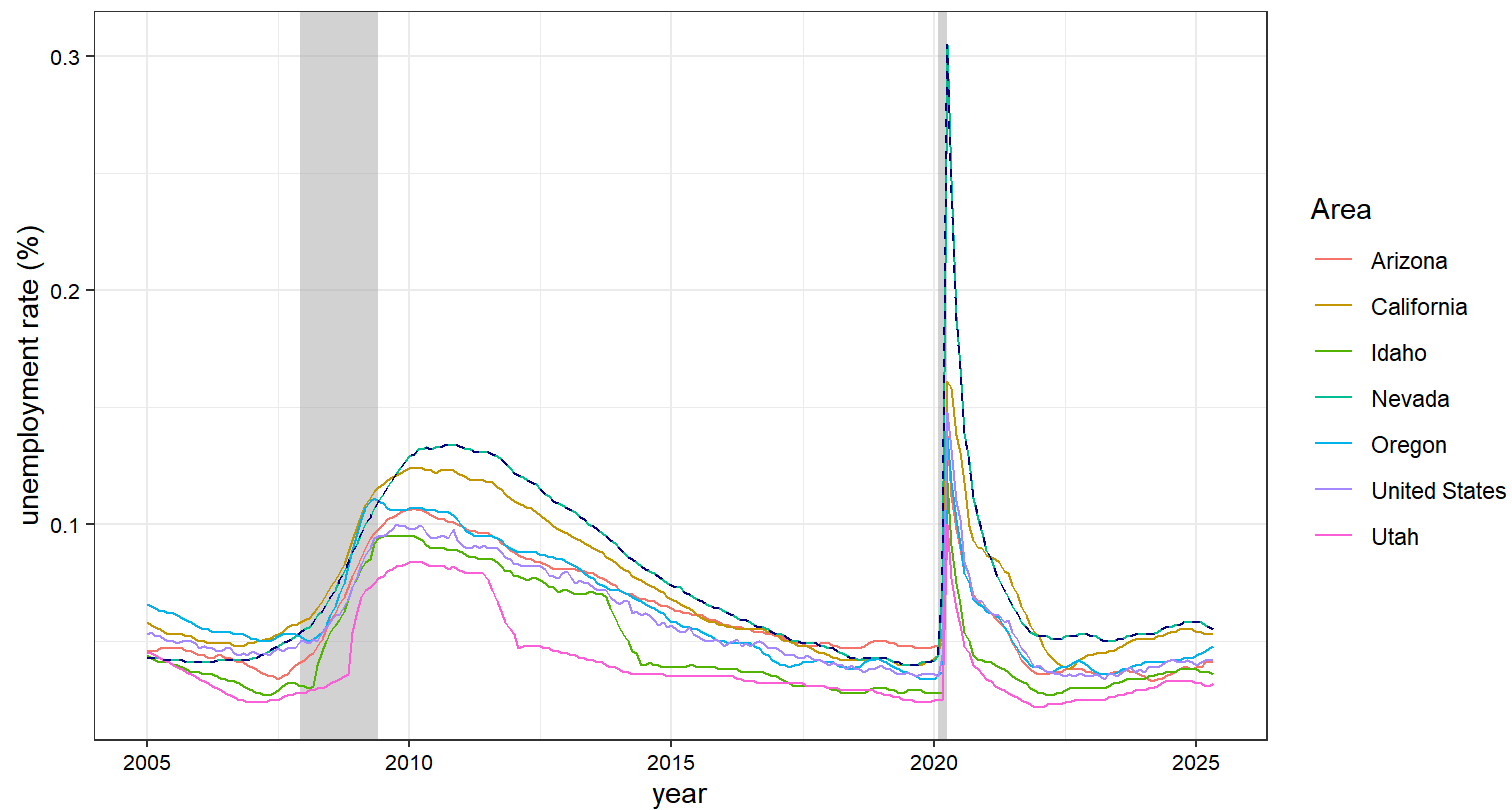
Table 1. Labor Force Participation Rate

Date	Area	LFPR %	Date	Area	LFPR %	Date	Area	LFPR %
May 2019	Utah	68.5	May 2024	Utah	68.9	May 2025	Utah	68.1
May 2019	Idaho	64.4	May 2024	Idaho	64.0	May 2025	Idaho	63.5
May 2019	Nevada	64.1	May 2024	Nevada	62.8	May 2025	Nevada	63.0
May 2019	United States	62.9	May 2024	United States	62.6	May 2025	Oregon	62.7
May 2019	California	62.3	May 2024	Oregon	62.6	May 2025	United States	62.4
May 2019	Arizona	61.9	May 2024	California	62.1	May 2025	California	62.3
May 2019	Oregon	61.5	May 2024	Arizona	61.5	May 2025	Arizona	61.4

Note:

Source: Local Area Unemployment Statistics (seasonally adjusted)

Figure 2. Unemployment Rate



Note: Dashed line is Nevada. Source: Local Area Unemployment Statistics (LAUS) (seasonally adjusted)

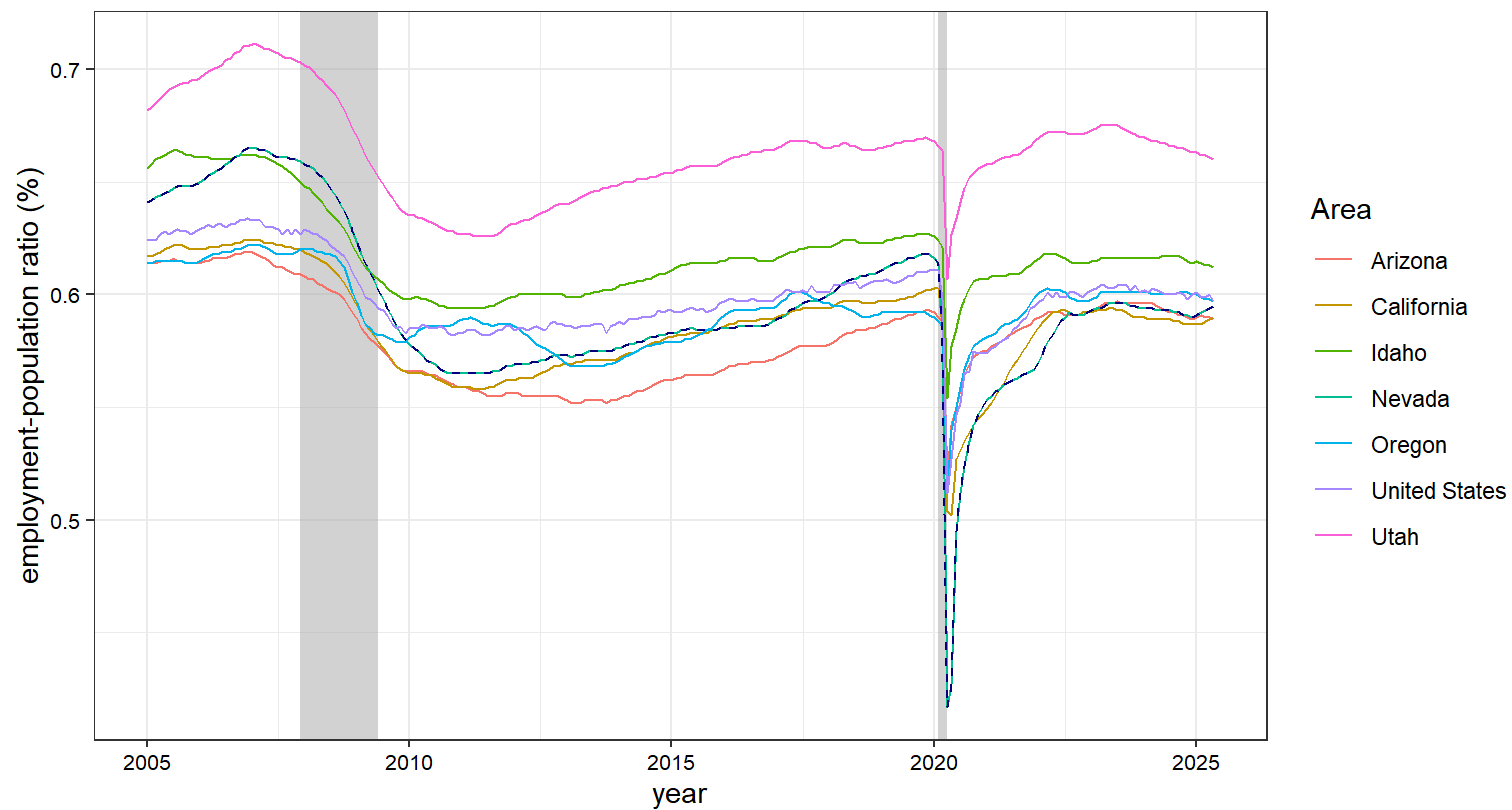
Table 2. Unemployment Rate

Date	Area	UR %	Date	Area	UR %	Date	Area	UR %
May 2019	Arizona	4.8	May 2024	Nevada	5.5	May 2025	Nevada	5.5
May 2019	Nevada	4.1	May 2024	California	5.2	May 2025	California	5.3
May 2019	California	4.0	May 2024	Oregon	4.1	May 2025	Oregon	4.8
May 2019	Oregon	3.8	May 2024	United States	4.0	May 2025	United States	4.2
May 2019	United States	3.6	May 2024	Idaho	3.6	May 2025	Arizona	4.1
May 2019	Idaho	2.8	May 2024	Arizona	3.4	May 2025	Idaho	3.6
May 2019	Utah	2.6	May 2024	Utah	3.2	May 2025	Utah	3.2

Note:

Source: Local Area Unemployment Statistics (seasonally adjusted)

Figure 3. Employment-Population Ratio



Note: Dashed line is Nevada. Source: Local Area Unemployment Statistics (LAUS) (seasonally adjusted)

Table 3. Employment-Population Ratio

Date	Area	EPRATIO %	Date	Area	EPRATIO %	Date	Area	EPRATIO %
May 2019	Utah	66.7	May 2024	Utah	66.7	May 2025	Utah	66.0
May 2019	Idaho	62.5	May 2024	Idaho	61.7	May 2025	Idaho	61.2
May 2019	Nevada	61.4	May 2024	United States	60.1	May 2025	United States	59.7
May 2019	United States	60.6	May 2024	Oregon	60.0	May 2025	Oregon	59.7
May 2019	California	59.8	May 2024	Arizona	59.4	May 2025	Nevada	59.5
May 2019	Oregon	59.2	May 2024	Nevada	59.3	May 2025	California	59.0
May 2019	Arizona	58.9	May 2024	California	58.9	May 2025	Arizona	58.9

Note:

Source: Local Area Unemployment Statistics (seasonally adjusted)

Labor Market Demographics - CPS. Population Composition

- **Non-institutional population 16 years and over composition:**
- In May 2019, teenagers in Nevada represented 6.7% of the population 16 years old and over, ranking third lowest among its neighbor states. Nationwide, teenagers made up 6.5% of the population. Young adults made up 7.7% of Nevada's population, the second lowest among its neighboring states. Nationwide was eight 8.2%. Prime working age Nevadans represented 49.9% of the population, third highest in the region. In the U.S. prime working people share of population was 48.9%. Nevadans approaching retirement age in the Silver State represented 35.7% of the population, third lowest in the region. Nationwide was 36.4%.
- In May 2024, the proportion of teenagers in Nevada was practically unchanged at 6.5%, the second lowest in the region. Nationwide teenagers represented 6.5% of the population. The proportion of young adults was unchanged at 7.7%, the second lowest in the region. Nationwide was 8.1%. Prime working age population share declined to 48.8%, fourth highest in the region. In the U.S. prime working people represented 47.9% of the population. Nevadans approaching retirement age in the Silver State increased to 37.0% of the population, ranking third highest in the region. Nationwide was also 37.4%.
- In May 2025 the proportion of teenagers in the State declined to 6.0%, second lowest in the region. In the U.S. teenagers made up 6.5% of the population. About 7.1% of the population in the Silver State were young adults, second lowest in the region. Nationwide was eight percent. The proportion of prime working age people in Nevada increased to 50.0%, third highest in the region. In the U.S. prime working population share was 47.9%. The share of population approaching retirement age was unchanged at 36.8% in Nevada, third highest in the region. Nationwide people approaching retirement age represented 37.6% of the population.

Labor Force Participation Rate by Age Groups - CPS

- **Labor Force Participation Rate by Age Groups:**

- In May 2019, teenage labor force participation rate (LFPR) in Nevada was 31.8%, second lowest rate among its neighbor states. Nationwide the teenage LFPR was 34.9%. Young adults LFPR was 77.3% in Nevada, third highest rate in the region. It was higher than the national rate of 71.3%. Prime working age Nevadans LFPR reached 82.9%, third highest rate in the region. The prime working age LFPR nationwide was 82.2%. Nevadans approaching retirement age LFPR was 39.3%, the third highest in the region. Compares to 40.1% in the U.S.
- In May 2024, the teenagers LFPR in Nevada rose to 33.7%, the second lowest in the region. Compares to 37.1% nationwide. The young adults LFPR declined to 75.0%, the second lowest rate in the region. Nationwide the rate was 71.4%. Prime working age LFPR was unchanged at 82.8% in Nevada, second lowest in the region. Compares to 83.4% in the U.S. Nevadans approaching retirement age LFPR was unchanged at 39.2%, second highest in the region. Nationwide the rate was 38.5%.
- In May 2025 the teenagers LFPR in the Silver State rose to 36.3%, second lowest in the region. In the U.S. teenagers LFPR was practically unchanged at 36.6%. Young adults LFPR in the Silver State rose to 75.8%, third highest in the region. Nationwide young adults LFPR was 71.5%. Prime working age LFPR rose to 83.2%, second lowest in the region. In the U.S. prime working people participation rate was 83.6%. Nevadans approaching retirement age LFPR was 38.1%, third highest in the region. The rate nationwide was 38.4%.

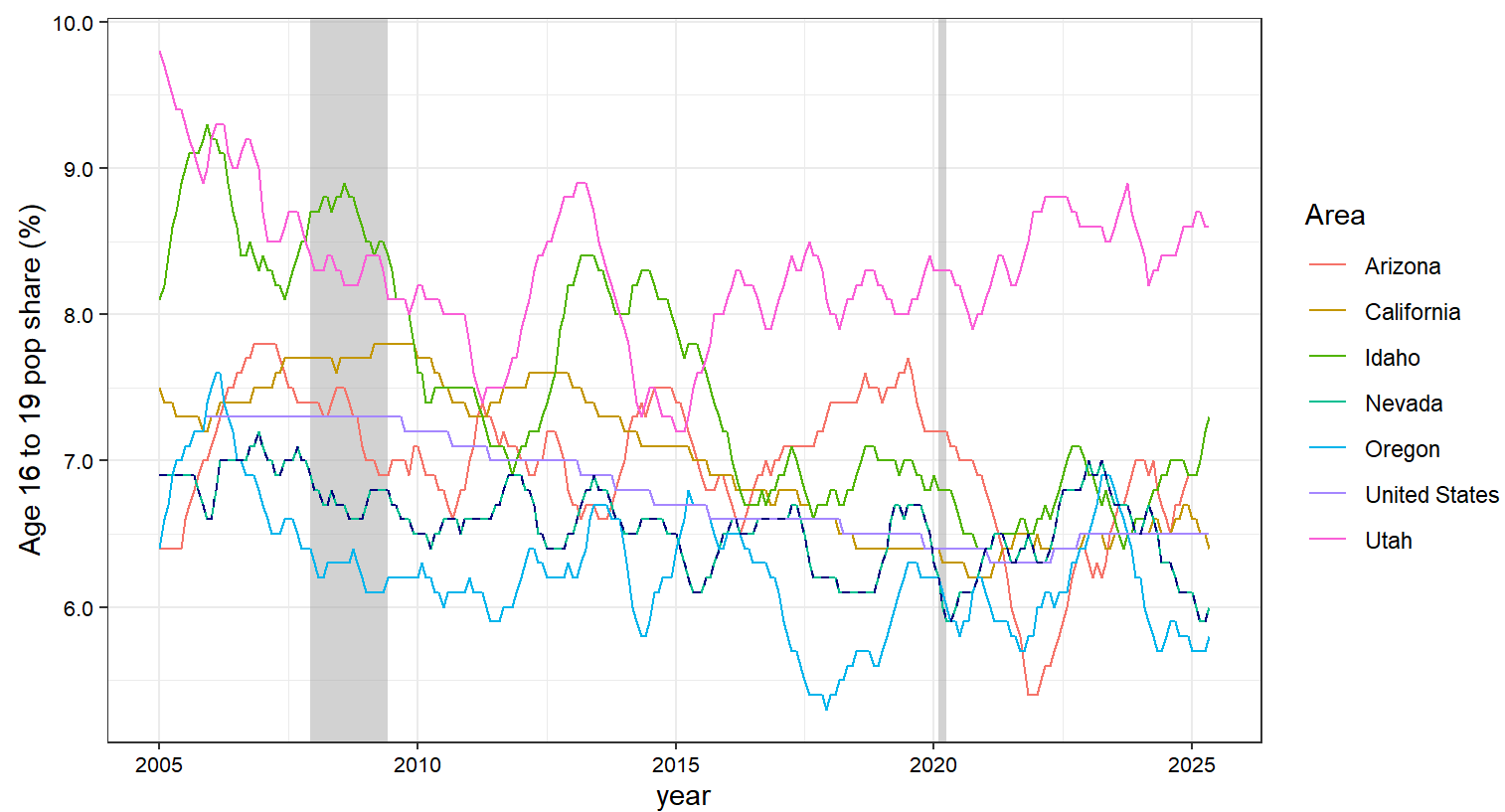
Table 4. Teenagers Population Share

Date	Area	16-19 % share	Date	Area	16-19 % share	Date	Area	16-19 % share
May 2019	Utah	8.0	May 2024	Utah	8.3	May 2025	Utah	8.6
May 2019	Arizona	7.6	May 2024	Arizona	6.8	May 2025	Arizona	7.3
May 2019	Idaho	6.9	May 2024	Idaho	6.8	May 2025	Idaho	7.3
May 2019	Nevada	6.7	May 2024	California	6.6	May 2025	United States	6.5
May 2019	United States	6.5	May 2024	Nevada	6.5	May 2025	California	6.4
May 2019	California	6.4	May 2024	United States	6.5	May 2025	Nevada	6.0
May 2019	Oregon	6.1	May 2024	Oregon	5.7	May 2025	Oregon	5.8

Note:

Source: Current Population Survey (not seasonally adjusted)

Figure 4. Teenagers Population Share



Note: Dashed line is Nevada. Source: Current Population Survey (CPS) (not seasonally adjusted)

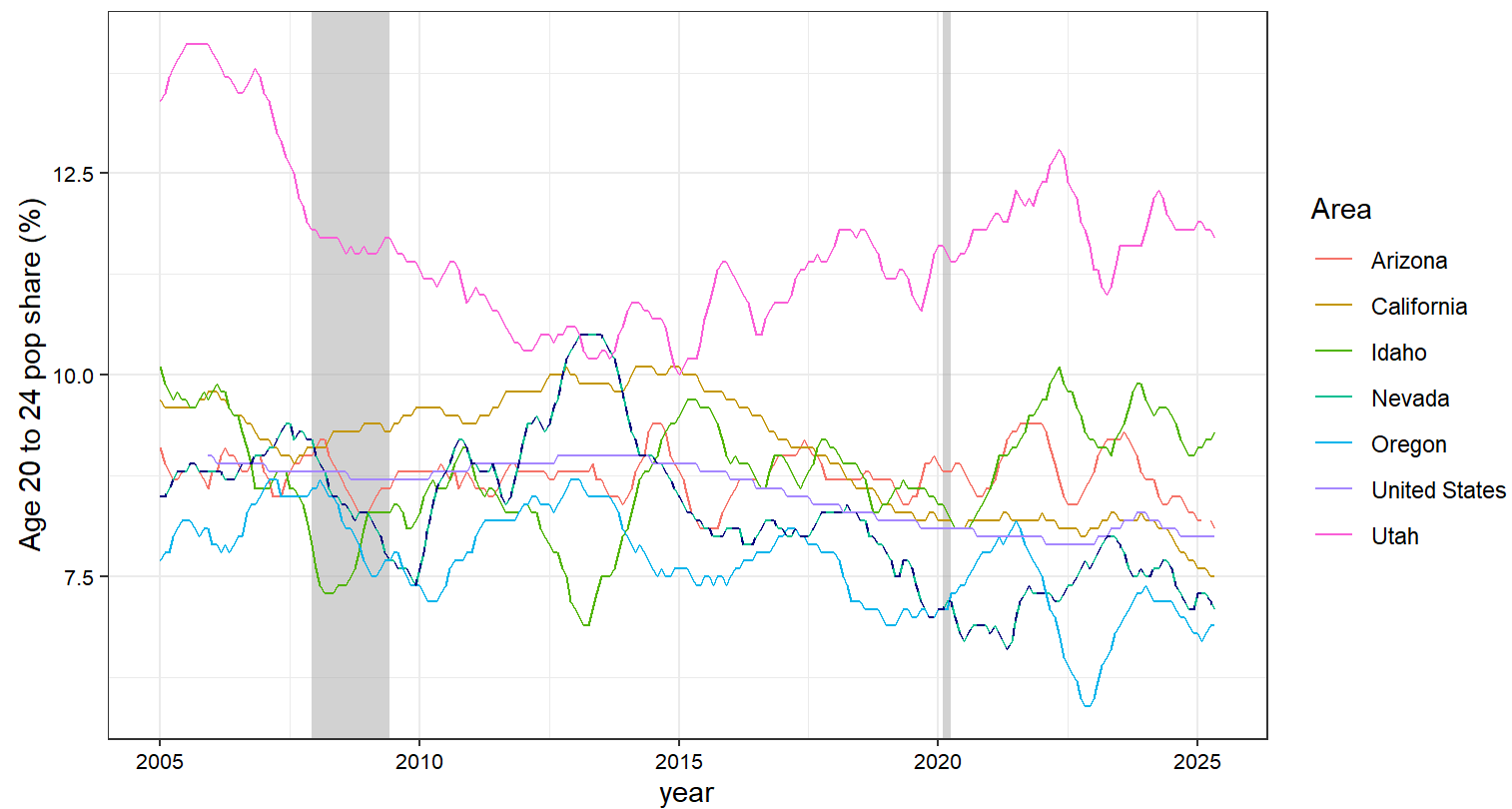
Table 5. Young Adults Population Share

Date	Area	20-24 % share	Date	Area	20-24 % share	Date	Area	20-24 % share
May 2019	Utah	11.3	May 2024	Utah	12.2	May 2025	Utah	11.7
May 2019	Idaho	8.7	May 2024	Idaho	9.6	May 2025	Idaho	9.3
May 2019	Arizona	8.4	May 2024	Arizona	8.4	May 2025	Arizona	8.1
May 2019	California	8.3	May 2024	California	8.1	May 2025	United States	8.0
May 2019	United States	8.2	May 2024	United States	8.1	May 2025	California	7.5
May 2019	Nevada	7.7	May 2024	Nevada	7.7	May 2025	Nevada	7.1
May 2019	Oregon	7.1	May 2024	Oregon	7.2	May 2025	Oregon	6.9

Note:

Source: Current Population Survey (not seasonally adjusted)

Figure 5. Young Adults Population Share



Note: Dashed line is Nevada. Source: Current Population Survey (CPS) (not seasonally adjusted)

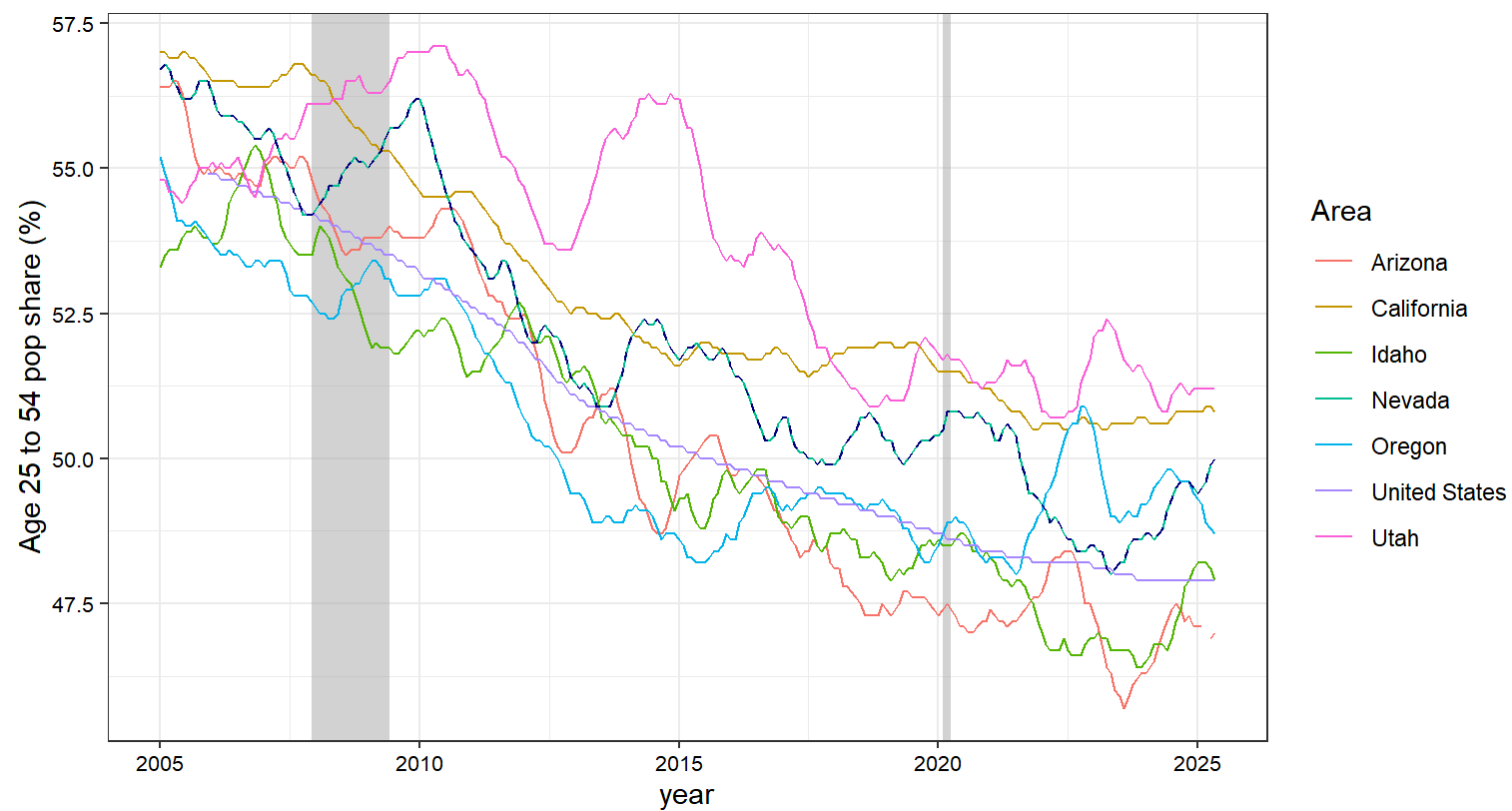
Table 6. Prime Working Age Population Share

Date	Area	25-54 % share	Date	Area	25-54 % share	Date	Area	25-54 % share
May 2019	California	51.9	May 2024	Utah	50.8	May 2025	Utah	51.2
May 2019	Utah	51.0	May 2024	California	50.6	May 2025	California	50.8
May 2019	Nevada	49.9	May 2024	Oregon	49.7	May 2025	Nevada	50.0
May 2019	United States	48.9	May 2024	Nevada	48.8	May 2025	Oregon	48.7
May 2019	Oregon	48.8	May 2024	United States	47.9	May 2025	United States	47.9
May 2019	Idaho	48.0	May 2024	Arizona	47.0	May 2025	Idaho	47.9
May 2019	Arizona	47.7	May 2024	Idaho	46.8	May 2025	Arizona	47.0

Note:

Source: Current Population Survey (not seasonally adjusted)

Figure 6. Prime Working Age Population Share



Note: Dashed line is Nevada. Source: Current Population Survey (CPS) (not seasonally adjusted)

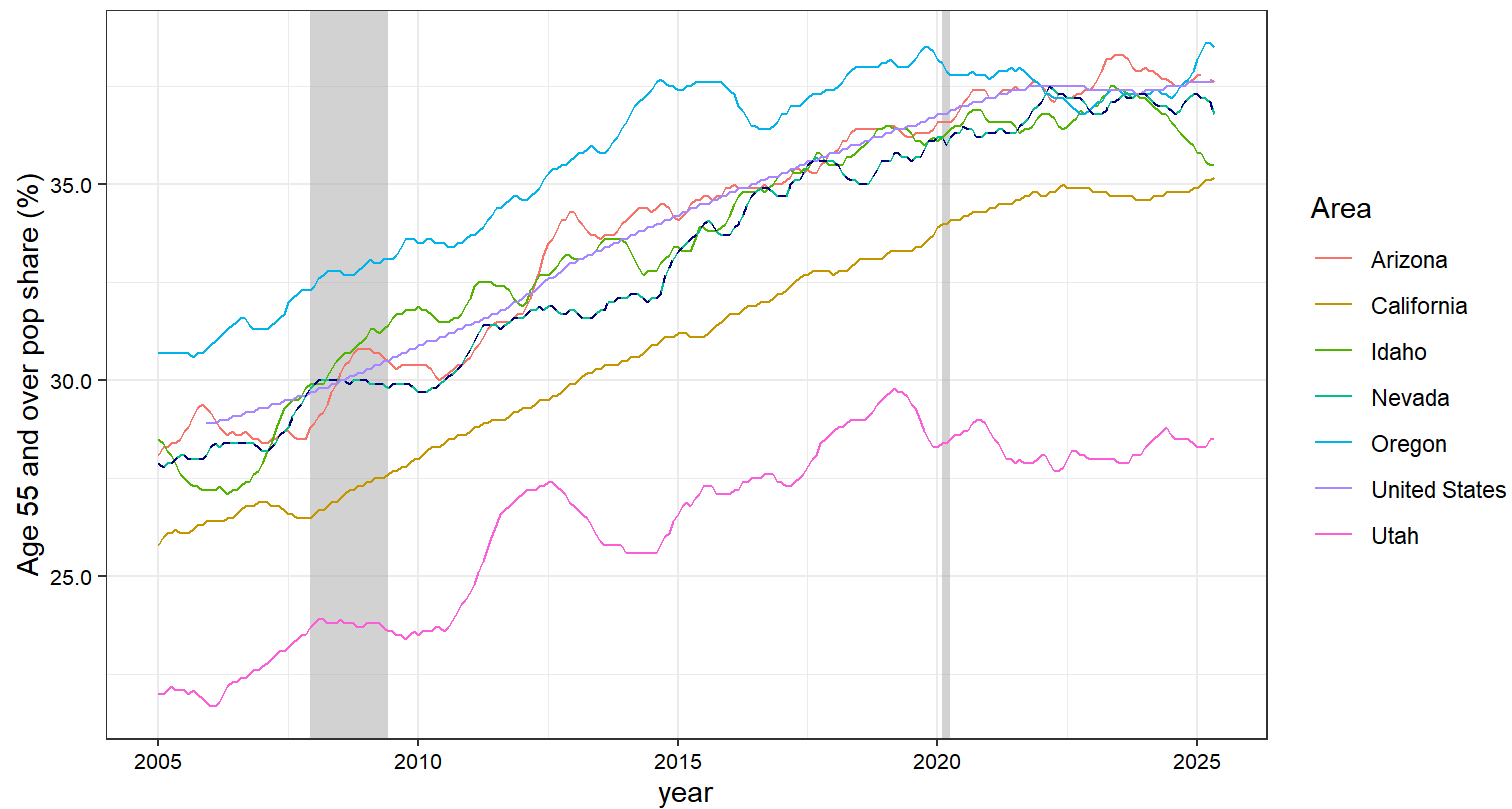
Table 7. Retirement Age Population Share

Date	Area	55+ % share	Date	Area	55+ % share	Date	Area	55+ % share
May 2019	Oregon	38.0	May 2024	Arizona	37.7	May 2025	Oregon	38.5
May 2019	Idaho	36.4	May 2024	United States	37.4	May 2025	United States	37.6
May 2019	United States	36.4	May 2024	Oregon	37.3	May 2025	Arizona	37.6
May 2019	Arizona	36.3	May 2024	Nevada	37.0	May 2025	Nevada	36.8
May 2019	Nevada	35.7	May 2024	Idaho	36.8	May 2025	Idaho	35.5
May 2019	California	33.3	May 2024	California	34.7	May 2025	California	35.2
May 2019	Utah	29.7	May 2024	Utah	28.7	May 2025	Utah	28.5

Note:

Source: Current Population Survey (not seasonally adjusted)

Figure 7. Retirement Age Population Share



Note: Dashed line is Nevada. Source: Current Population Survey (CPS) (not seasonally adjusted)

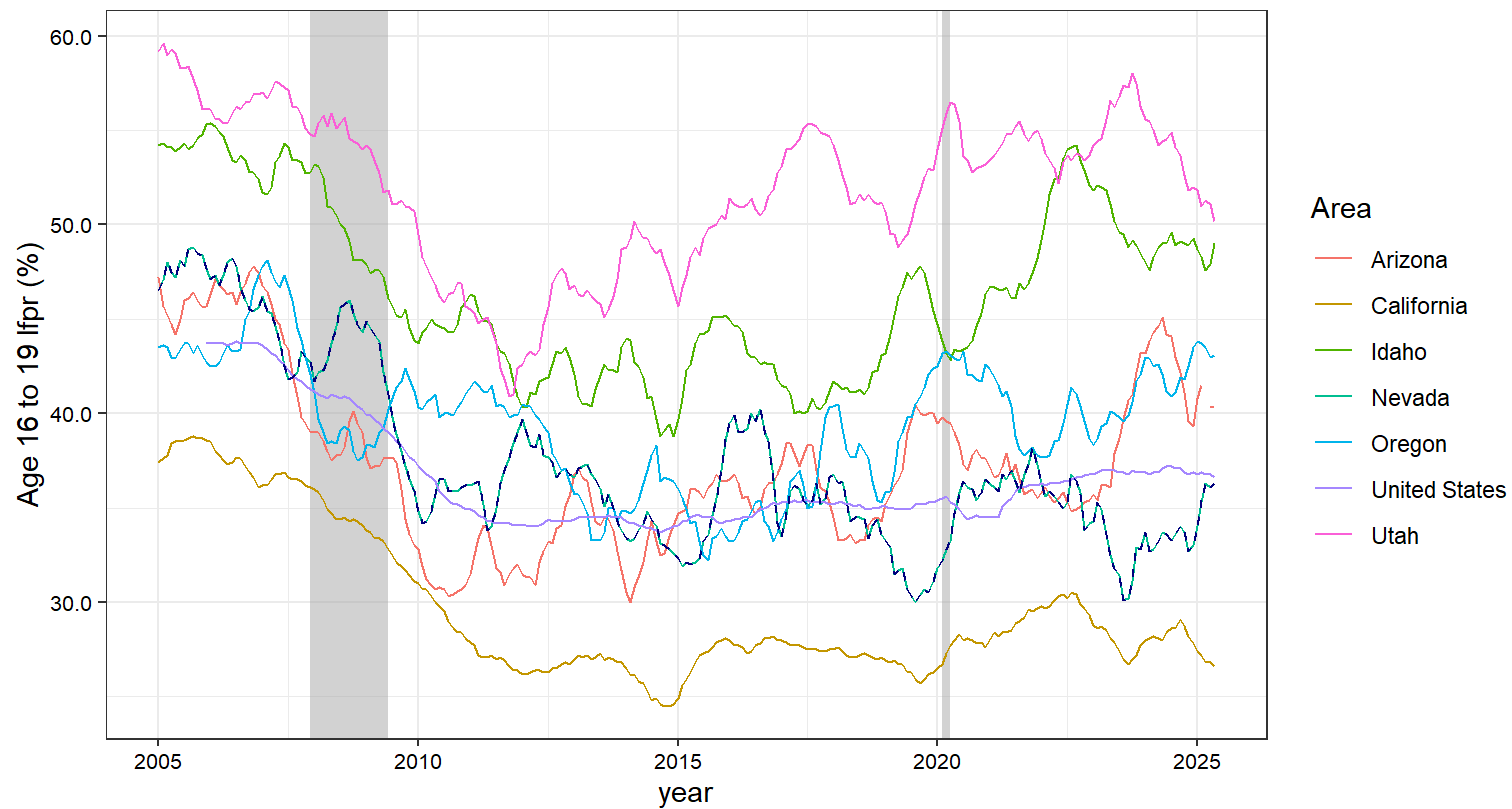
Table 8. Teenagers Labor Force Participation Rate

Date	Area	16-19 LFPR %	Date	Area	16-19 LFPR %	Date	Area	16-19 LFPR %
May 2019	Utah	49.2	May 2024	Utah	54.4	May 2025	Utah	50.2
May 2019	Idaho	46.7	May 2024	Idaho	49.0	May 2025	Idaho	49.0
May 2019	Oregon	39.0	May 2024	Arizona	45.1	May 2025	Oregon	43.1
May 2019	Arizona	37.0	May 2024	Oregon	42.1	May 2025	Arizona	40.4
May 2019	United States	34.9	May 2024	United States	37.1	May 2025	United States	36.6
May 2019	Nevada	31.8	May 2024	Nevada	33.7	May 2025	Nevada	36.3
May 2019	California	26.7	May 2024	California	28.0	May 2025	California	26.6

Note:

Source: Current Population Survey (not seasonally adjusted)

Figure 8. Teenagers Labor Force Participation Rate



Note: Dashed line is Nevada. Source: Current Population Survey (CPS) (not seasonally adjusted)

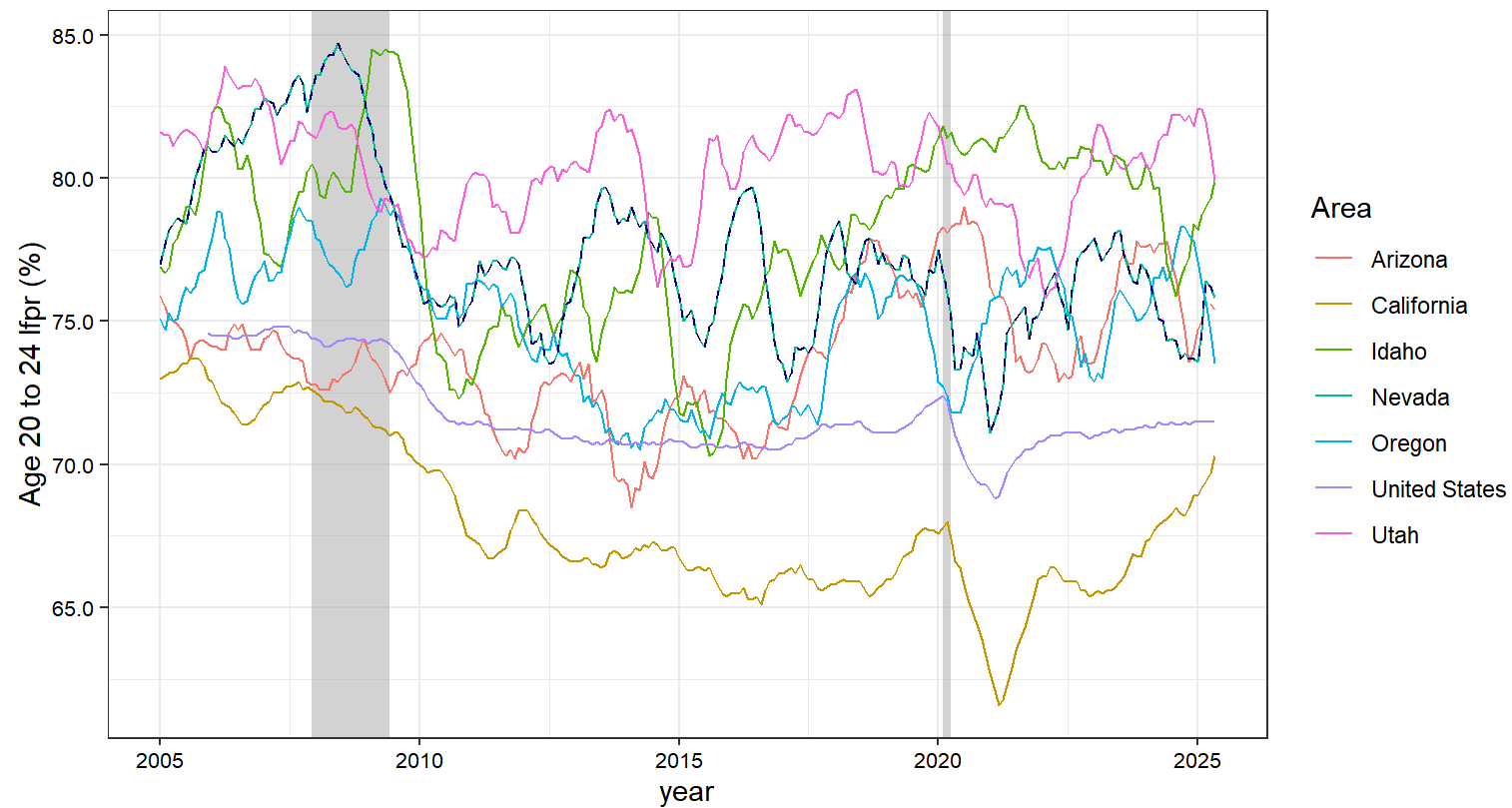
Table 9. Young Adults Labor Force Participation Rate

Date	Area	20-24 LFPR %	Date	Area	20-24 LFPR %	Date	Area	20-24 LFPR %
May 2019	Utah	79.8	May 2024	Utah	81.5	May 2025	Utah	79.9
May 2019	Idaho	79.6	May 2024	Idaho	78.5	May 2025	Idaho	79.9
May 2019	Nevada	77.3	May 2024	Arizona	77.7	May 2025	Nevada	75.8
May 2019	Oregon	76.6	May 2024	Oregon	76.9	May 2025	Arizona	75.4
May 2019	Arizona	75.9	May 2024	Nevada	75.0	May 2025	Oregon	73.5
May 2019	United States	71.3	May 2024	United States	71.4	May 2025	United States	71.5
May 2019	California	66.8	May 2024	California	68.0	May 2025	California	70.3

Note:

Source: Current Population Survey (not seasonally adjusted)

Figure 9. Young Adults Labor Force Participation Rate



Note: Dashed line is Nevada. Source: Current Population Survey (CPS) (not seasonally adjusted)

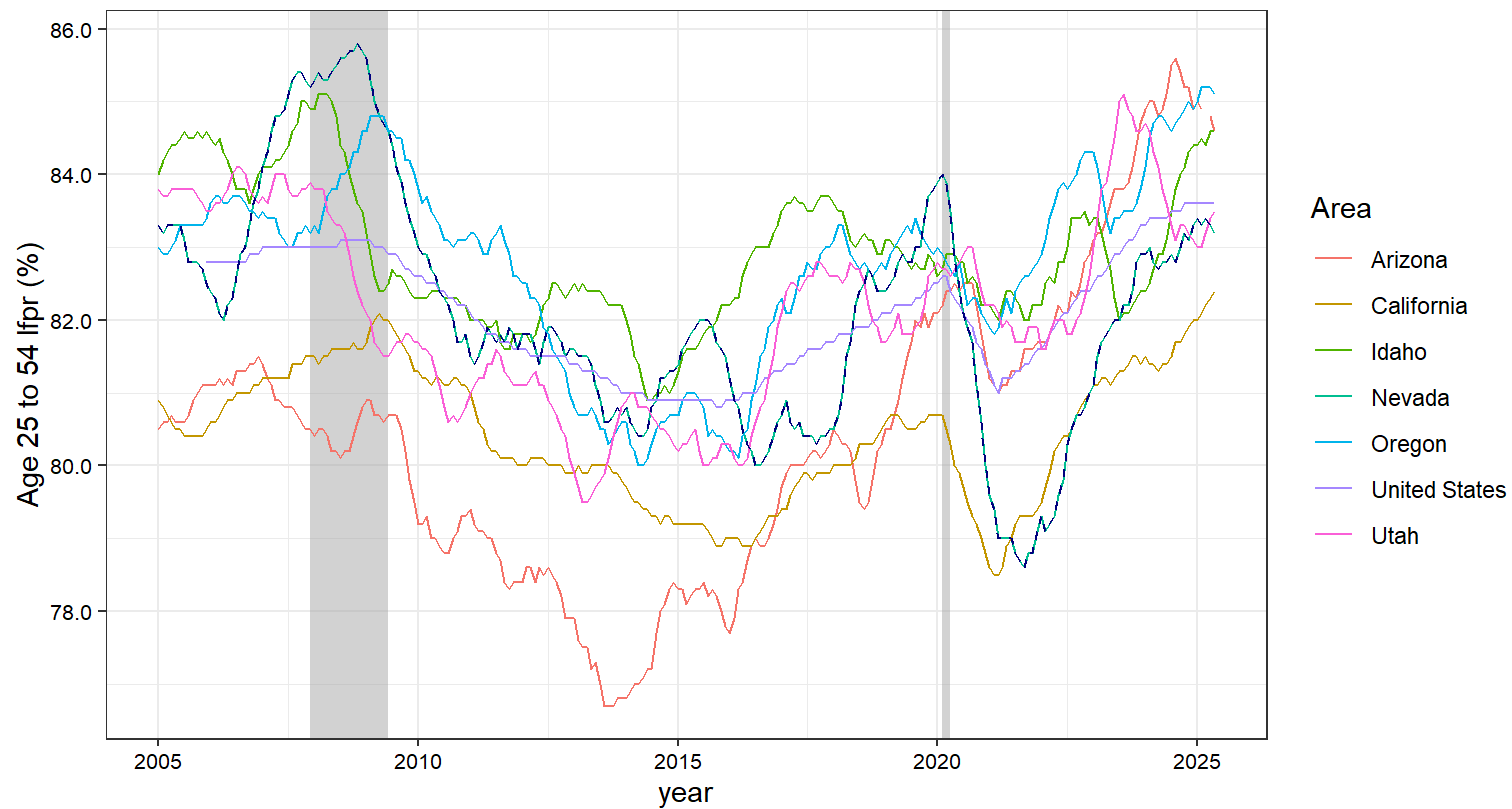
Table 10. Prime Working Labor Force Participation Rate

Date	Area	25-54 LFPR %	Date	Area	25-54 LFPR %	Date	Area	25-54 LFPR %
May 2019	Oregon	83.2	May 2024	Arizona	84.9	May 2025	Oregon	85.1
May 2019	Idaho	82.9	May 2024	Oregon	84.8	May 2025	Arizona	84.6
May 2019	Nevada	82.9	May 2024	Utah	83.8	May 2025	Idaho	84.6
May 2019	United States	82.2	May 2024	United States	83.4	May 2025	United States	83.6
May 2019	Utah	81.8	May 2024	Idaho	82.9	May 2025	Utah	83.5
May 2019	Arizona	81.2	May 2024	Nevada	82.8	May 2025	Nevada	83.2
May 2019	California	80.6	May 2024	California	81.4	May 2025	California	82.4

Note:

Source: Current Population Survey (not seasonally adjusted)

Figure 10. Prime Working Labor Force Participation Rate



Note: Dashed line is Nevada. Source: Current Population Survey (CPS) (not seasonally adjusted)

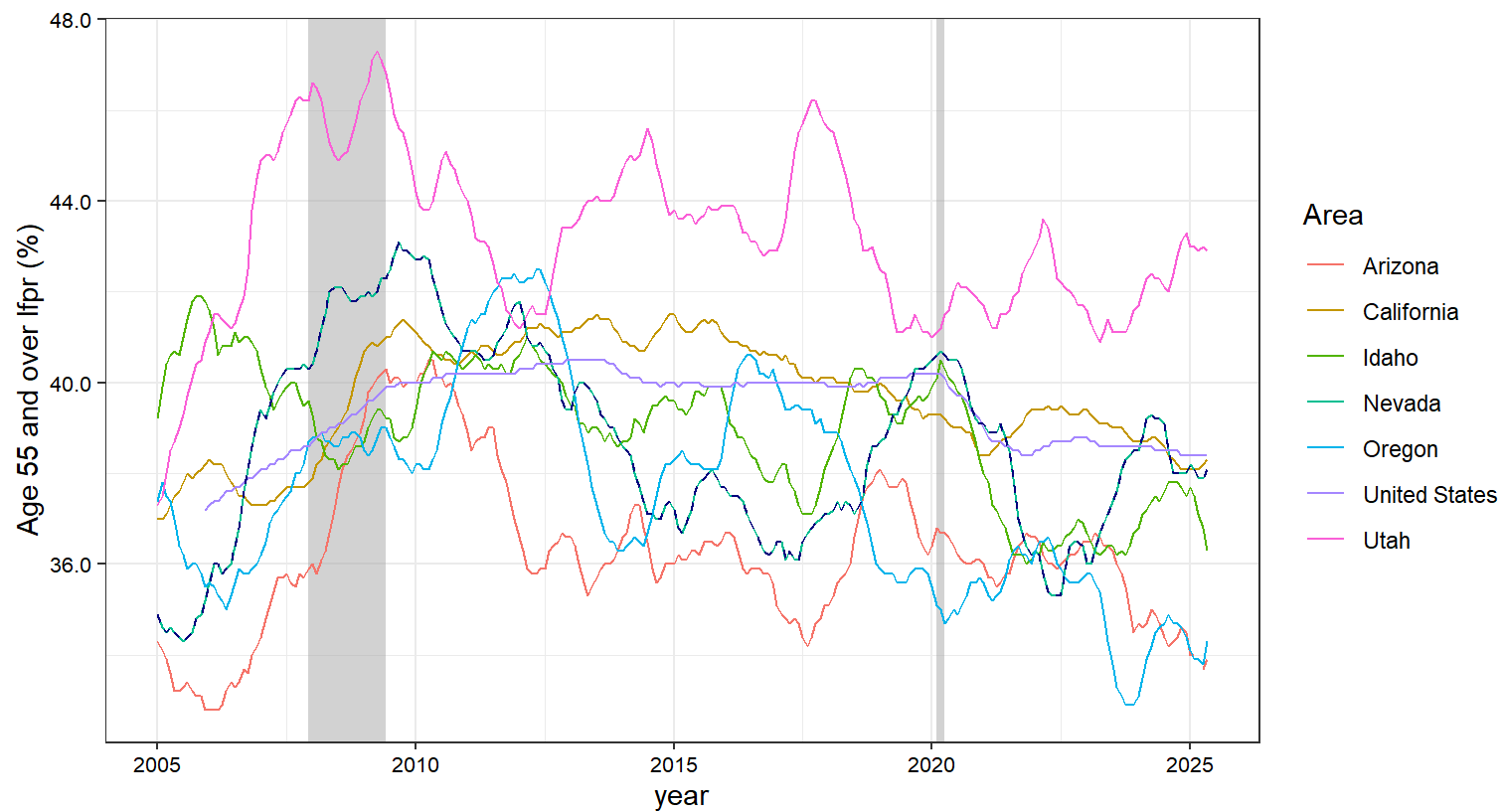
Table 11. Retirement Age Labor Force Participation Rate

Date	Area	55+ LFPR %	Date	Area	55+ LFPR %	Date	Area	55+ LFPR %
May 2019	Utah	41.1	May 2024	Utah	42.3	May 2025	Utah	42.9
May 2019	United States	40.1	May 2024	Nevada	39.2	May 2025	United States	38.4
May 2019	California	39.6	May 2024	California	38.8	May 2025	California	38.3
May 2019	Nevada	39.3	May 2024	United States	38.5	May 2025	Nevada	38.1
May 2019	Idaho	39.1	May 2024	Idaho	37.5	May 2025	Idaho	36.3
May 2019	Arizona	37.7	May 2024	Arizona	34.9	May 2025	Oregon	34.3
May 2019	Oregon	35.6	May 2024	Oregon	34.5	May 2025	Arizona	33.9

Note:

Source: Current Population Survey (not seasonally adjusted)

Figure 11. Retirement Age Labor Force Participation Rate



Note: Dashed line is Nevada. Source: Current Population Survey (CPS) (not seasonally adjusted)

Unemployment Rate by Age Groups - CPS

- **Unemployment Rate by Age Groups:**

- In May 2019, teenagers unemployment rate (UR) in Nevada was 19.4%, the highest rate among its neighbor states. Nationwide the teenagers UR was 12.7%. The UR for young adults was 7.2% in Nevada, third highest rate in the region. Compares to seven percent nationwide. The UR for prime working Nevadans was 3.3%, fourth highest in the region. Nationwide prime working age UR was 3.2%. Nevadans approaching retirement age experienced a 3.2% UR, the third highest in the region. In the U.S. the rate for this age group was 2.9%.
- In May 2024, the teenagers UR in Nevada declined to 16.0%, second highest rate in the region. Compares to 11.9% nationwide. The UR for young adults declined to 6.5%, third highest rate in the region. Nationwide the rate was 6.8%. Prime working age UR in Nevada rose to 4.6%, the highest in the region. Nationwide prime working UR was 3.2%. Nevadans approaching retirement age UR rose to 3.3%, second highest in the region. Compares to 2.7% in the U.S.
- In May 2025 the teenage UR in the State rose to 19.9%, the second highest in the region. In the U.S. the teenage UR rose to 13.1%. Young adults UR in the Silver State rose to 9.1%, fourth highest in the region. Nationwide young adults UR was 7.8%. Prime working age UR in Nevada was 4.4%, the highest in the region. Compares to 3.5% nationwide. Nevadans approaching retirement age UR declined to 3.2%, third highest in the region. Compares to three percent nationwide.

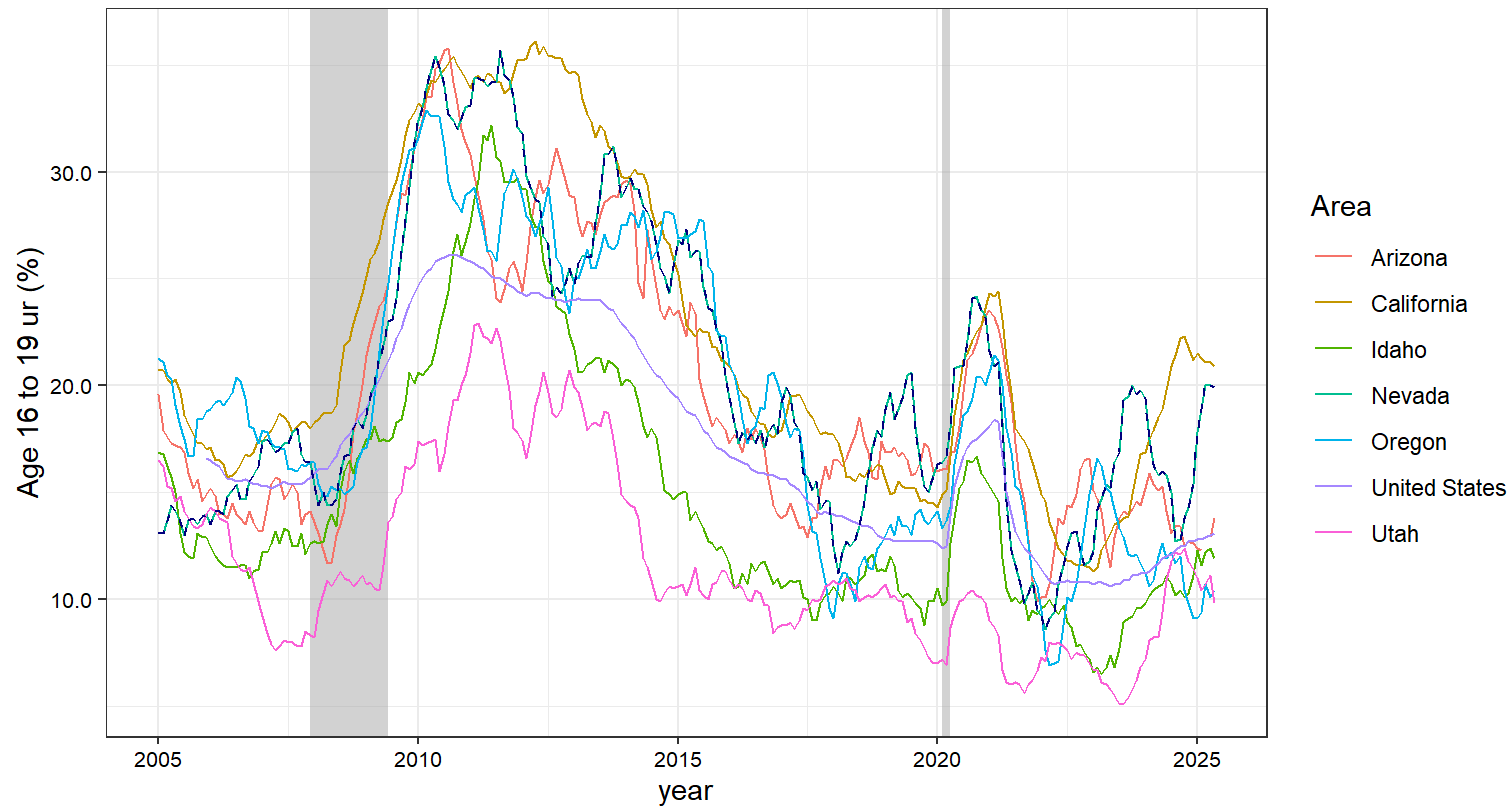
Table 12. Teenagers Unemployment Rate

Date	Area	16-19 UR %	Date	Area	16-19 UR %	Date	Area	16-19 UR %
May 2019	Nevada	19.4	May 2024	California	18.9	May 2025	California	20.9
May 2019	Arizona	16.9	May 2024	Nevada	16.0	May 2025	Nevada	19.9
May 2019	California	15.3	May 2024	Arizona	15.3	May 2025	Arizona	13.8
May 2019	Oregon	13.4	May 2024	Oregon	12.6	May 2025	United States	13.1
May 2019	United States	12.7	May 2024	United States	11.9	May 2025	Idaho	11.9
May 2019	Idaho	10.1	May 2024	Idaho	10.7	May 2025	Oregon	10.4
May 2019	Utah	9.9	May 2024	Utah	9.4	May 2025	Utah	9.8

Note:

Source: Current Population Survey (not seasonally adjusted)

Figure 12. Teenagers Unemployment Rate



Note: Dashed line is Nevada. Source: Current Population Survey (CPS) (not seasonally adjusted)

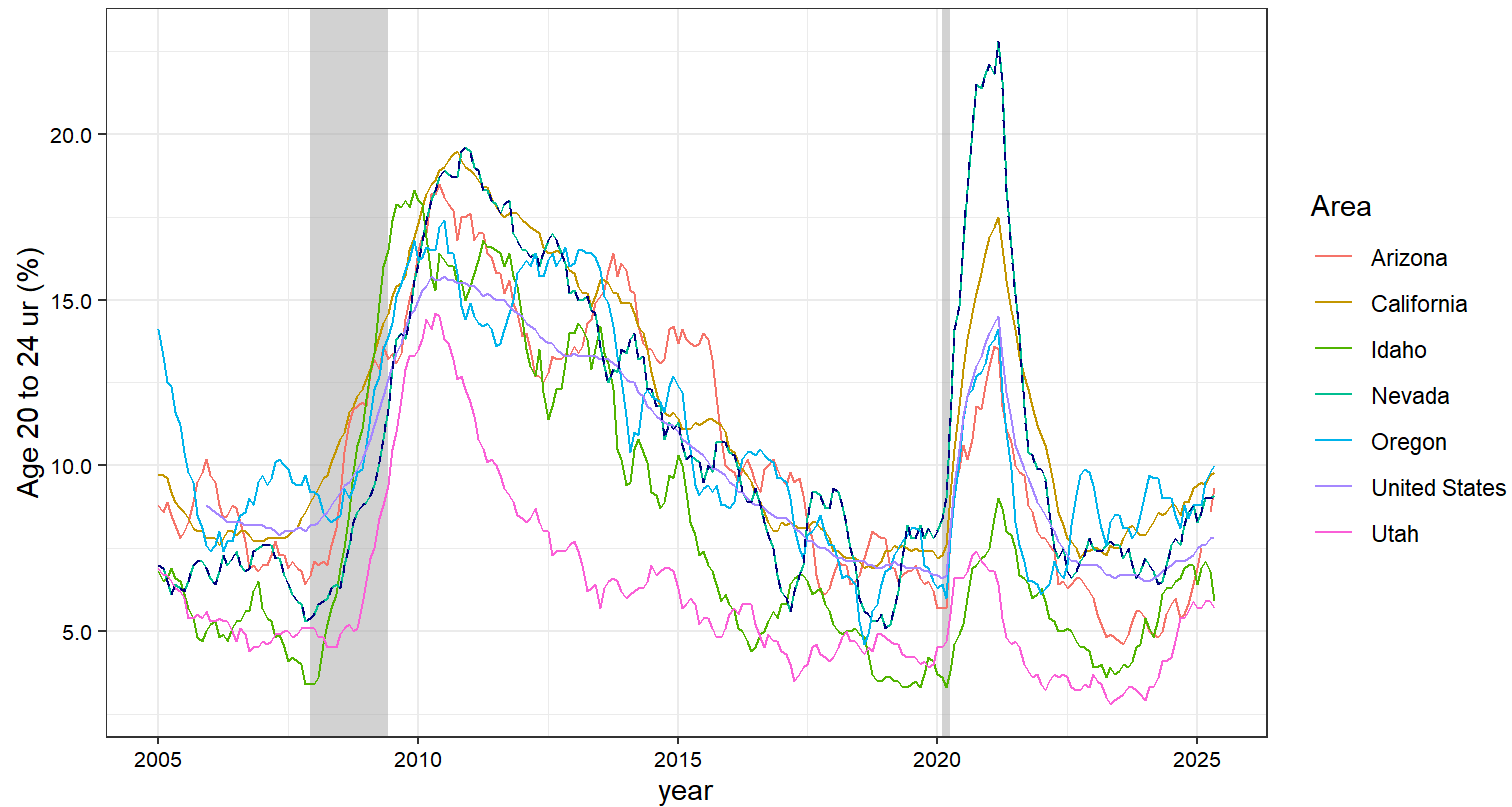
Table 13. Young Adults Unemployment Rate

Date	Area	20-24 UR %	Date	Area	20-24 UR %	Date	Area	20-24 UR %
May 2019	Oregon	7.7	May 2024	Oregon	9.0	May 2025	Oregon	10.0
May 2019	California	7.6	May 2024	California	8.5	May 2025	California	9.8
May 2019	Nevada	7.2	May 2024	United States	6.8	May 2025	Arizona	9.3
May 2019	United States	7.0	May 2024	Nevada	6.5	May 2025	Nevada	9.1
May 2019	Arizona	6.7	May 2024	Idaho	6.1	May 2025	United States	7.8
May 2019	Utah	4.3	May 2024	Arizona	5.0	May 2025	Idaho	5.9
May 2019	Idaho	3.3	May 2024	Utah	4.1	May 2025	Utah	5.7

Note:

Source: Current Population Survey (not seasonally adjusted)

Figure 13. Young Adults Unemployment Rate



Note: Dashed line is Nevada. Source: Current Population Survey (CPS) (not seasonally adjusted)

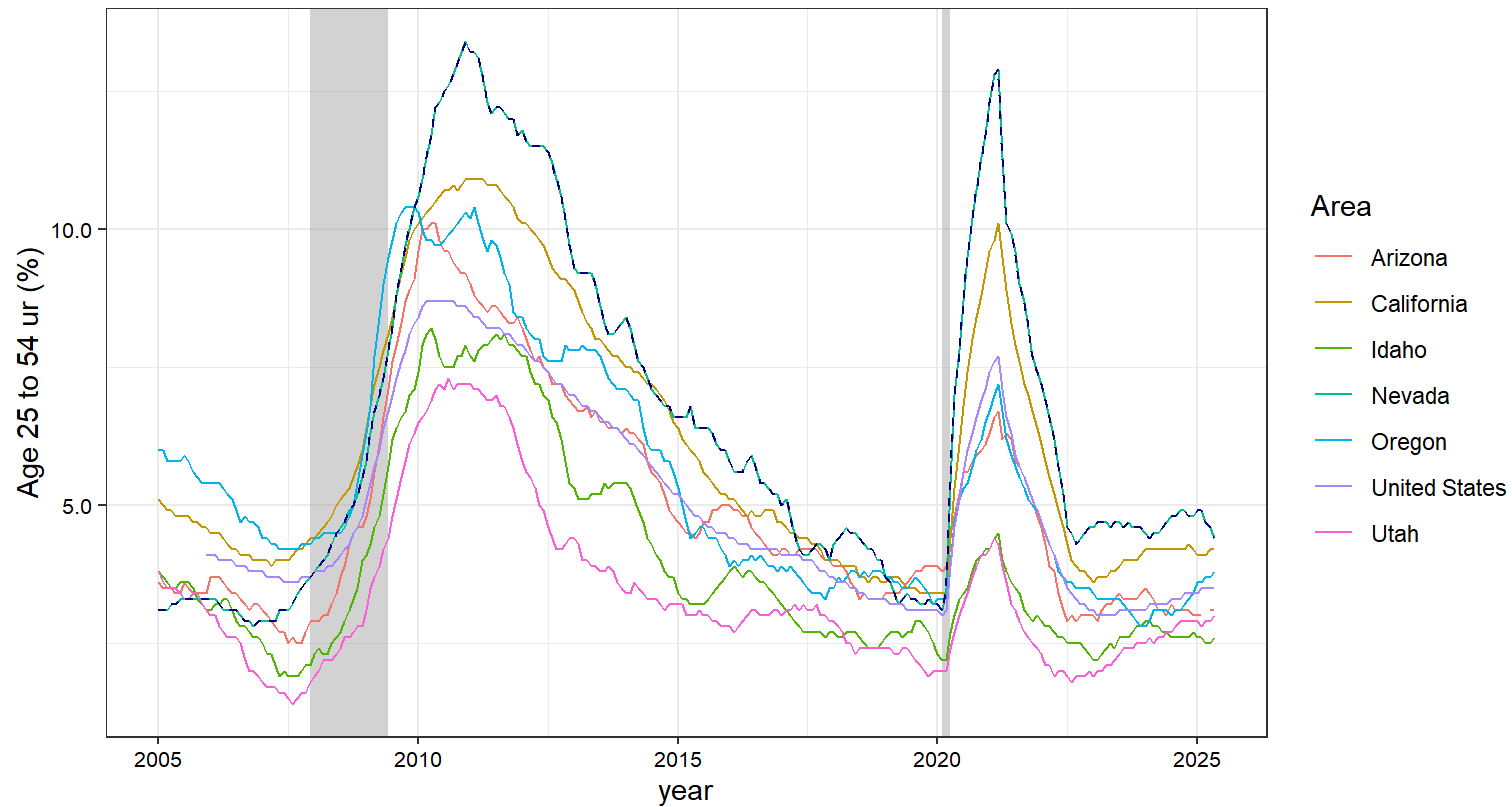
Table 14. Prime Working Age Unemployment Rate

Date	Area	25-54 UR %	Date	Area	25-54 UR %	Date	Area	25-54 UR %
May 2019	California	3.6	May 2024	Nevada	4.6	May 2025	Nevada	4.4
May 2019	Arizona	3.5	May 2024	California	4.2	May 2025	California	4.2
May 2019	Oregon	3.5	May 2024	United States	3.2	May 2025	Oregon	3.8
May 2019	Nevada	3.3	May 2024	Arizona	3.1	May 2025	United States	3.5
May 2019	United States	3.2	May 2024	Oregon	3.1	May 2025	Arizona	3.1
May 2019	Idaho	2.6	May 2024	Idaho	2.7	May 2025	Utah	3.0
May 2019	Utah	2.4	May 2024	Utah	2.6	May 2025	Idaho	2.6

Note:

Source: Current Population Survey (not seasonally adjusted)

Figure 14. Prime Working Age Unemployment Rate



Note: Dashed line is Nevada. Source: Current Population Survey (CPS) (not seasonally adjusted)

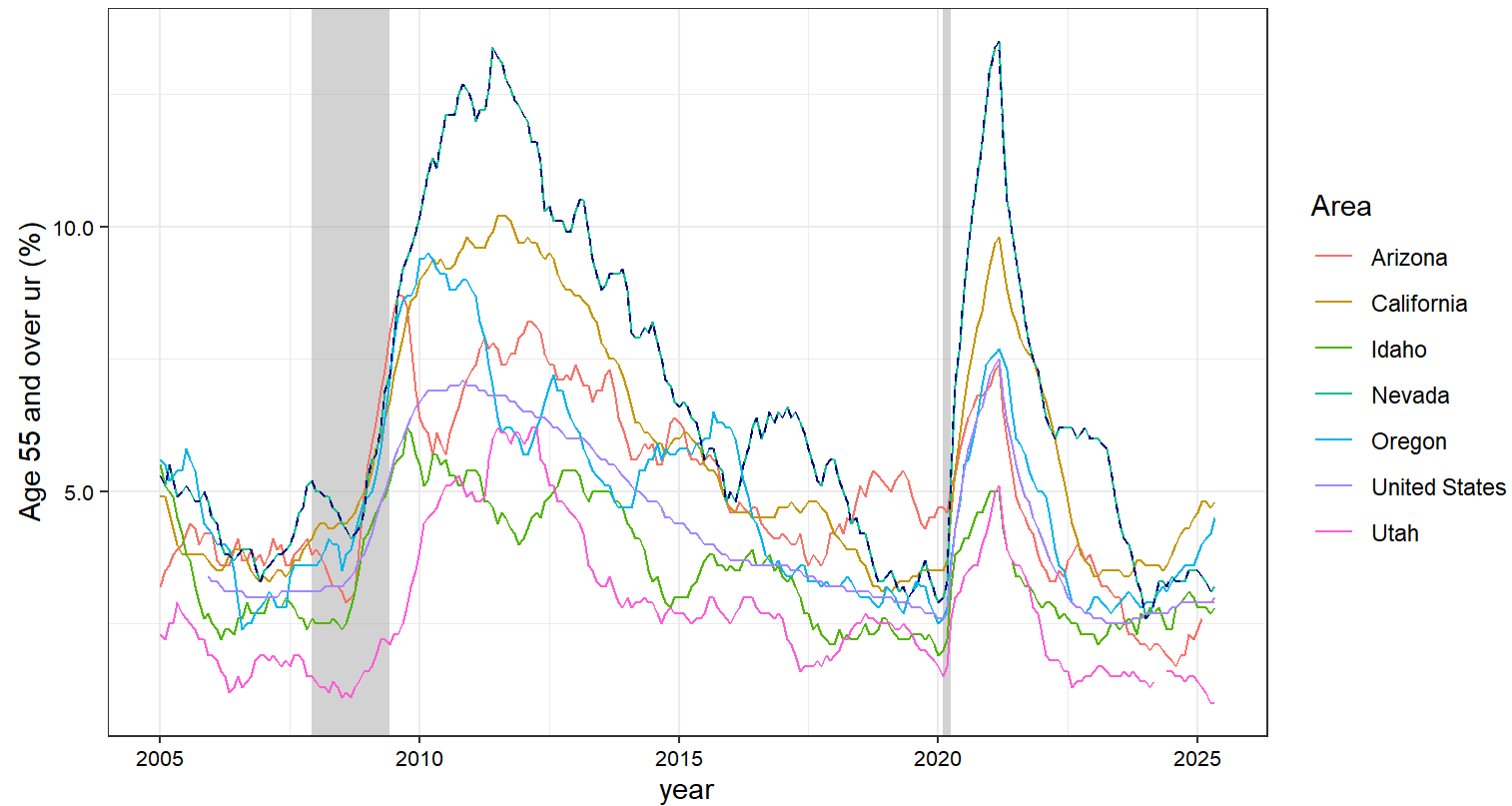
Table 15. Retirement Age Unemployment Rate

Date	Area	55+ UR %	Date	Area	55+ UR %	Date	Area	55+ UR %
May 2019	Arizona	5.4	May 2024	California	3.5	May 2025	California	4.8
May 2019	California	3.3	May 2024	Nevada	3.3	May 2025	Oregon	4.5
May 2019	Nevada	3.2	May 2024	Oregon	3.2	May 2025	Nevada	3.2
May 2019	United States	2.9	May 2024	United States	2.7	May 2025	United States	3.0
May 2019	Oregon	2.7	May 2024	Idaho	2.6	May 2025	Arizona	2.9
May 2019	Utah	2.5	May 2024	Arizona	2.0	May 2025	Idaho	2.8
May 2019	Idaho	2.2	May 2024	Utah	NA	May 2025	Utah	1.0

Note:

No data available for Utah. Source: Current Population Survey (not seasonally adjusted)

Figure 15. Retirement Age Unemployment Rate



Note: Dashed line is Nevada. Source: Current Population Survey (CPS) (not seasonally adjusted)

Employment-Population Ratio by Age Groups - CPS

- In May 2019 teenage employment-population ratio (EPRATIO) in Nevada was 25.6%, second lowest rate among its neighbor states. Nationwide the teenage EPRATIO was 30.4%. Young adults EPRATIO was 71.7% in Nevada, third highest in the region. Compares to 66.3% nationwide. Prime working age Nevadans EPRATIO reached 80.2%, the third highest in the region. Nationwide the prime working age rate was 79.6%. Nevadans approaching retirement age EPRATIO was 38.5%, fourth highest in the region. In the U.S. the rate was 39.0%.
- In May 2024, the teenage EPRATIO in Nevada rose to 28.3%, second lowest in the region. Compares to 32.7% nationwide. The young adults EPRATIO declined to 70.2%, fourth highest rate in the region. Nationwide the rate was 66.5%. Prime working age EPRATIO in Nevada declined to 79.0%, second lowest in the region. Nationwide the rate was 80.7%. Nevadans approaching retirement age EPRATIO declined to 38.0%, second highest in the region. Compares to 37.5% nationwide.
- In May 2025 the teenage EPRATIO in the Silver State rose to 29.1%, second lowest in the region. In the U.S. the teenage EPRATIO was 31.8%. Young adults EPRATIO in the Silver State declined to 68.9%, third highest in the region. Nationwide young adults EPRATIO was 65.9%. Prime working age EPRATIO rose to 79.6%, second lowest in the region. In the U.S. prime working age EPRATIO was 80.6%. Nevadans approaching retirement age EPRATIO declined to 36.9%, second highest in the region. Nationwide the rate was 37.2%.

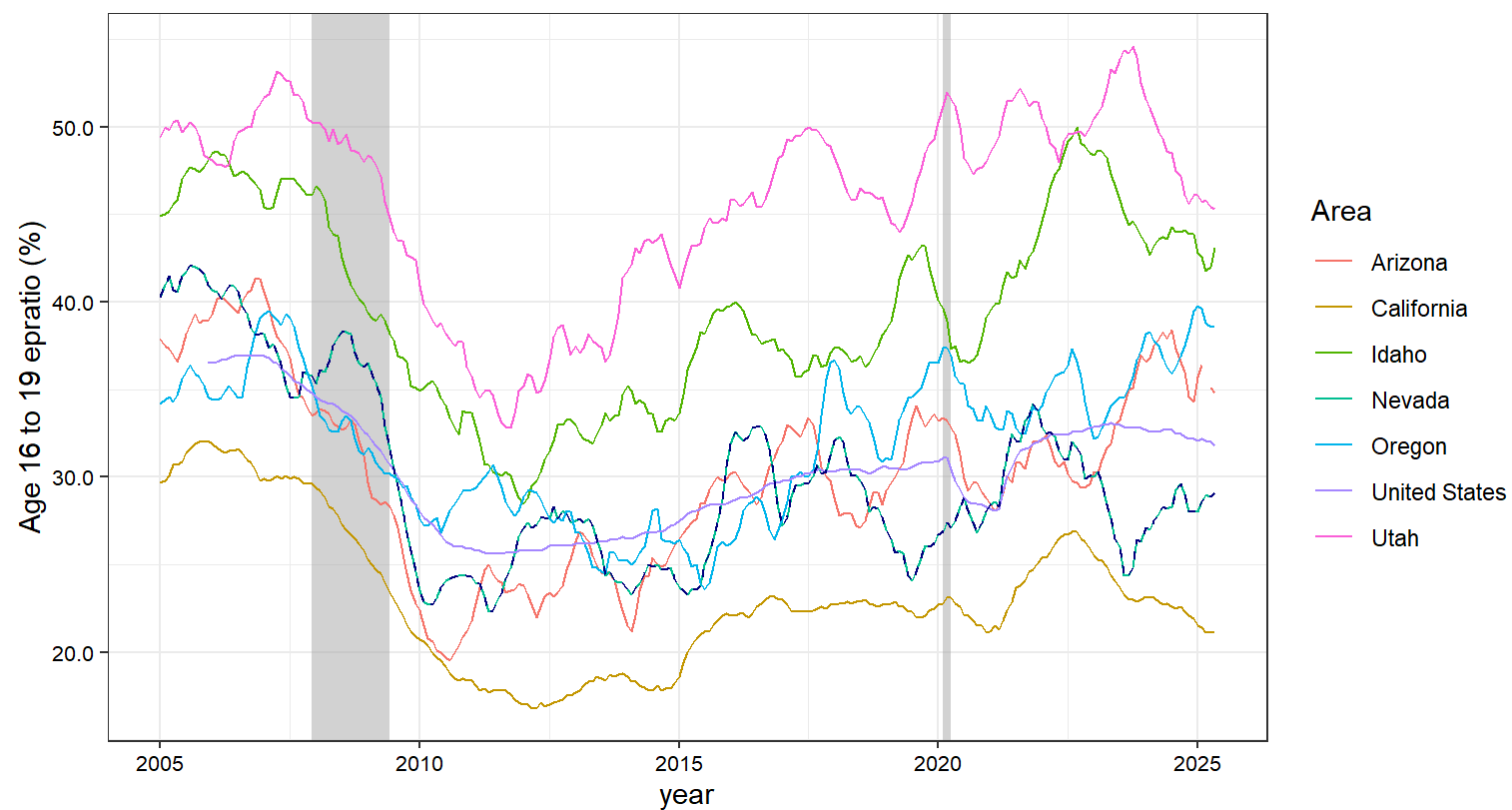
Table 16. Teenagers Employment-Population Ratio

Date	Area	16-19 EPRATIO %	Date	Area	16-19 EPRATIO %	Date	Area	16-19 EPRATIO %
May 2019	Utah	44.3	May 2024	Utah	49.3	May 2025	Utah	45.3
May 2019	Idaho	42.0	May 2024	Idaho	43.7	May 2025	Idaho	43.1
May 2019	Oregon	33.8	May 2024	Arizona	38.3	May 2025	Oregon	38.6
May 2019	Arizona	30.8	May 2024	Oregon	36.8	May 2025	Arizona	34.8
May 2019	United States	30.4	May 2024	United States	32.7	May 2025	United States	31.8
May 2019	Nevada	25.6	May 2024	Nevada	28.3	May 2025	Nevada	29.1
May 2019	California	22.6	May 2024	California	22.7	May 2025	California	21.1

Note:

Source: Current Population Survey (not seasonally adjusted)

Figure 16. Teenagers Employment-Population Ratio



Note: Dashed line is Nevada. Source: Current Population Survey (CPS) (not seasonally adjusted)

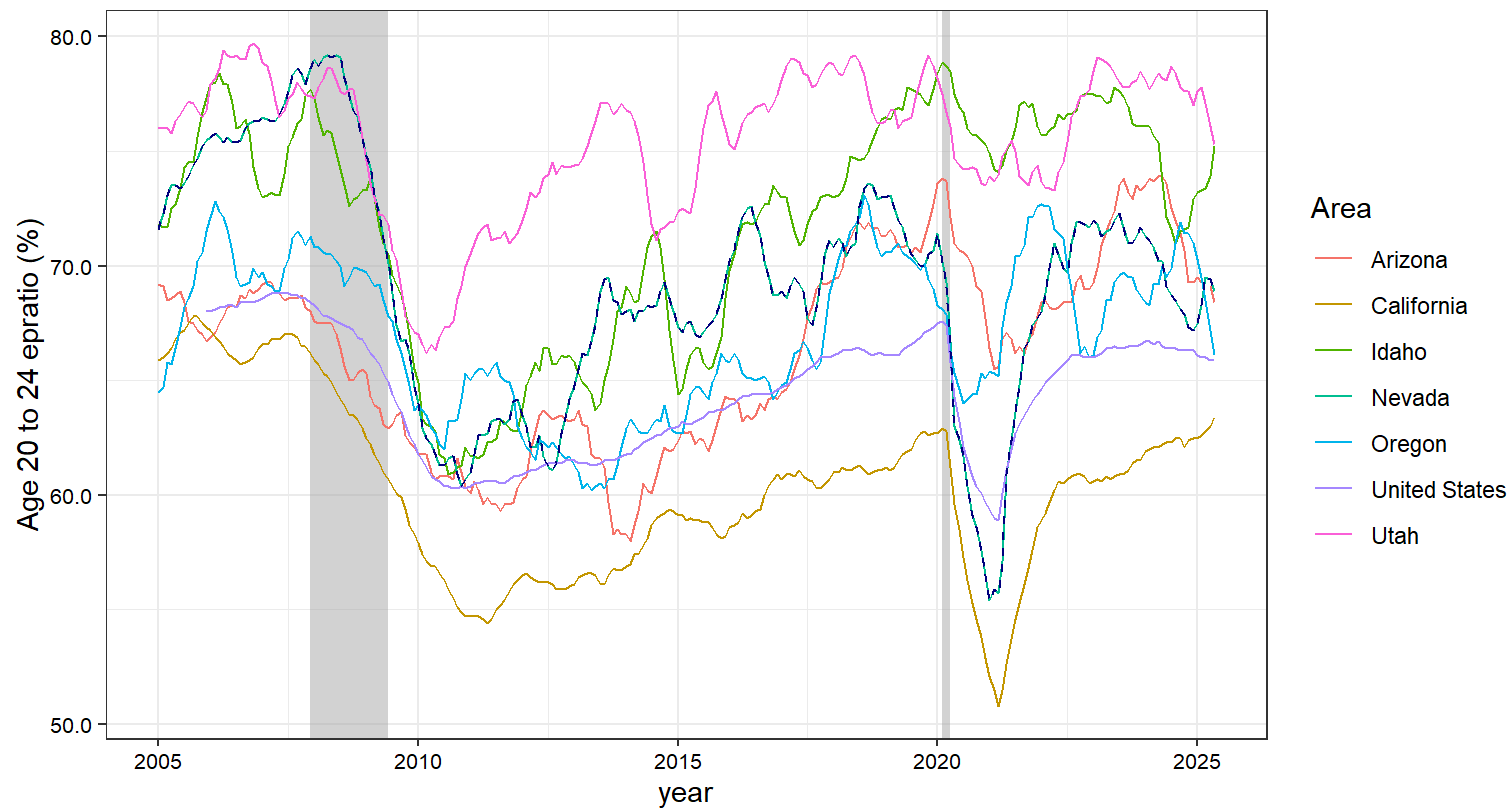
Table 17. Young Adults Employment-Population Ratio

Date	Area	20-24 EPRATIO %	Date	Area	20-24 EPRATIO %	Date	Area	20-24 EPRATIO %
May 2019	Idaho	76.8	May 2024	Utah	78.2	May 2025	Utah	75.3
May 2019	Utah	76.3	May 2024	Arizona	73.9	May 2025	Idaho	75.2
May 2019	Nevada	71.7	May 2024	Idaho	73.7	May 2025	Nevada	68.9
May 2019	Arizona	70.8	May 2024	Nevada	70.2	May 2025	Arizona	68.4
May 2019	Oregon	70.6	May 2024	Oregon	70.0	May 2025	Oregon	66.1
May 2019	United States	66.3	May 2024	United States	66.5	May 2025	United States	65.9
May 2019	California	61.8	May 2024	California	62.2	May 2025	California	63.4

Note:

Source: Current Population Survey (not seasonally adjusted)

Figure 17. Young Adults Employment-Population Ratio



Note: Dashed line is Nevada. Source: Current Population Survey (CPS) (not seasonally adjusted)

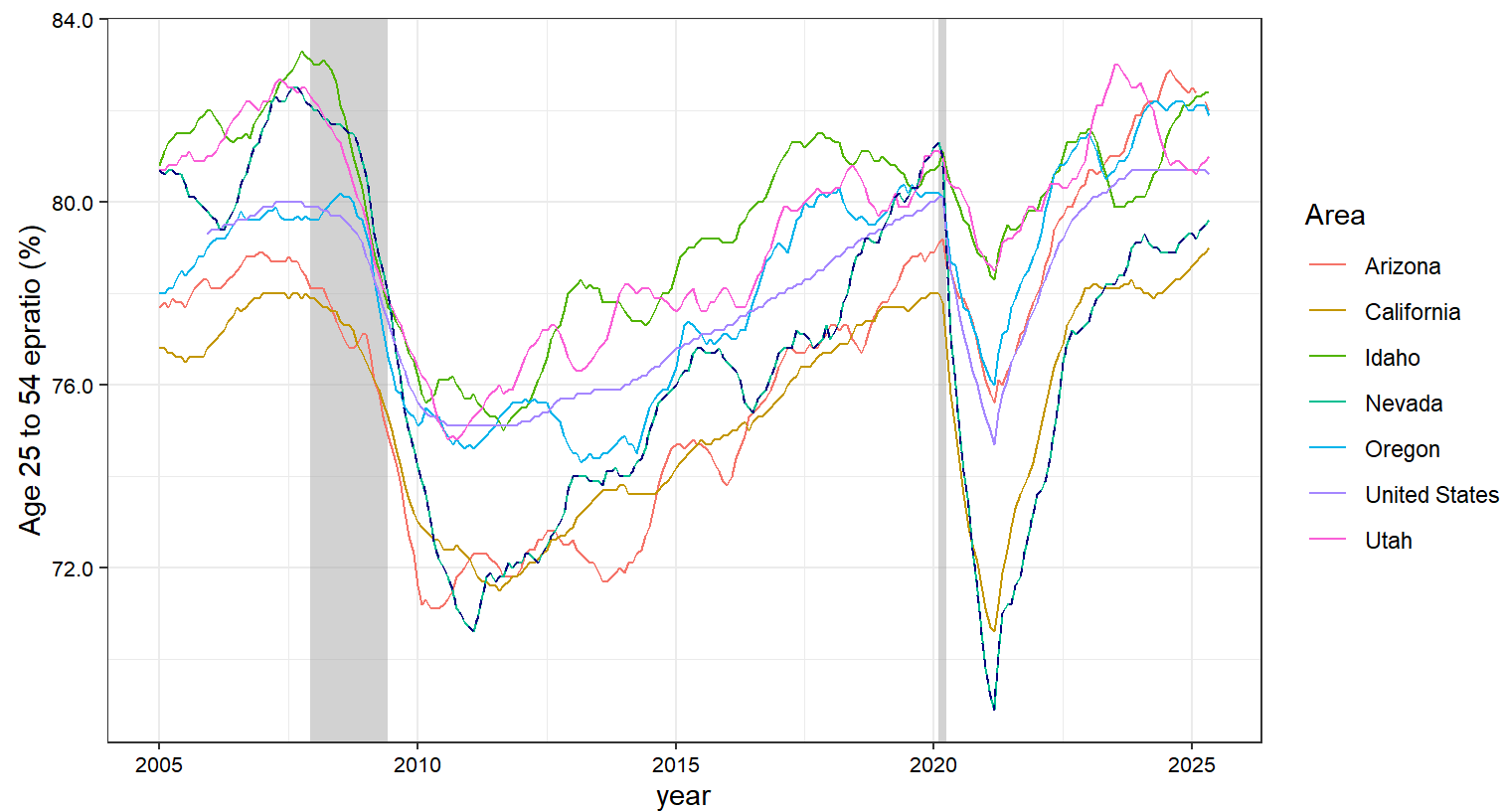
Table 18. Prime Working Employment-Population Ratio

Date	Area	25-54 EPRATIO %	Date	Area	25-54 EPRATIO %	Date	Area	25-54 EPRATIO %
May 2019	Idaho	80.7	May 2024	Arizona	82.2	May 2025	Idaho	82.4
May 2019	Oregon	80.3	May 2024	Oregon	82.2	May 2025	Arizona	82.0
May 2019	Nevada	80.2	May 2024	Utah	81.6	May 2025	Oregon	81.9
May 2019	Utah	79.9	May 2024	Idaho	80.7	May 2025	Utah	81.0
May 2019	United States	79.6	May 2024	United States	80.7	May 2025	United States	80.6
May 2019	Arizona	78.3	May 2024	Nevada	79.0	May 2025	Nevada	79.6
May 2019	California	77.7	May 2024	California	78.0	May 2025	California	79.0

Note:

Source: Current Population Survey (not seasonally adjusted)

Figure 18. Prime Working Employment-Population Ratio



Note: Dashed line is Nevada. Source: Current Population Survey (CPS) (not seasonally adjusted)

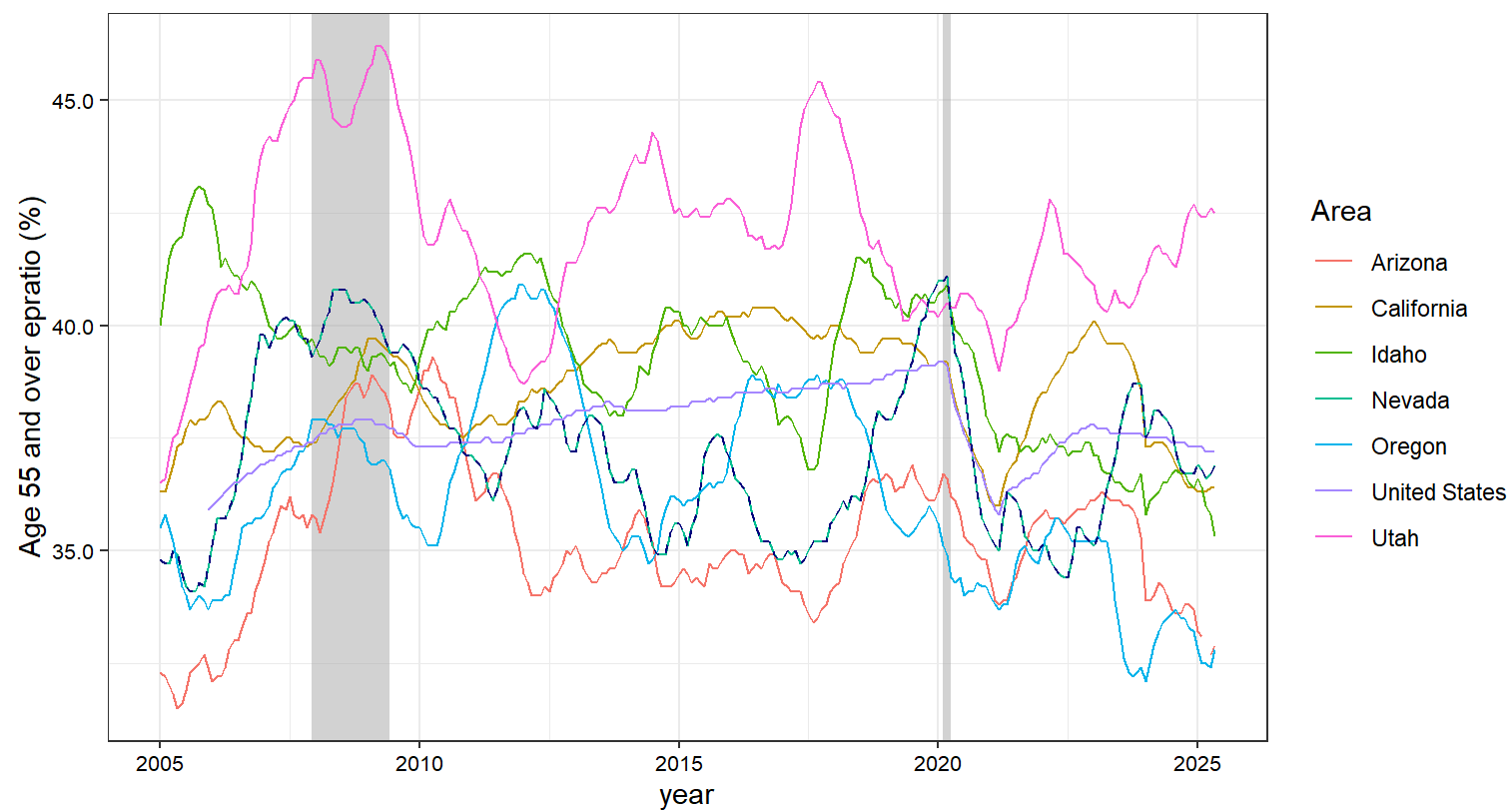
Table 19. Retirement Age Employment-Population Ratio

Date	Area	55+ EPRATIO %	Date	Area	55+ EPRATIO %	Date	Area	55+ EPRATIO %
May 2019	Idaho	40.3	May 2024	Utah	41.6	May 2025	Utah	42.5
May 2019	Utah	40.1	May 2024	Nevada	38.0	May 2025	United States	37.2
May 2019	California	39.6	May 2024	United States	37.5	May 2025	Nevada	36.9
May 2019	United States	39.0	May 2024	California	37.4	May 2025	California	36.4
May 2019	Nevada	38.5	May 2024	Idaho	36.5	May 2025	Idaho	35.3
May 2019	Arizona	36.4	May 2024	Arizona	34.2	May 2025	Arizona	32.9
May 2019	Oregon	35.4	May 2024	Oregon	33.4	May 2025	Oregon	32.8

Note:

Source: Current Population Survey (not seasonally adjusted)

Figure 19. Retirement Age Employment-Population Ratio



Note: Dashed line is Nevada. Source: Current Population Survey (CPS) (not seasonally adjusted)