

MEDIA CONTACT
Rosa Mendez
detrmedia@detr.nv.gov

PRESS RELEASE



ONE NEVADA - Growing a Skilled, Diverse Workforce

STEVE SISOLAK
Governor

ELISA CAFFERATA
Director

DAVID SCHMIDT
Chief Economist

RESEARCH AND ANALYSIS BUREAU
UNEMPLOYMENT INSURANCE CLAIMS PRESS RELEASE

For Immediate Release
February 5, 2021

Continued claims rise SEB programs; PUA initial claims filings over 1 million

CARSON CITY, NV - For the week ending January 30, initial claims for unemployment insurance (UI) totaled 9,821, down 284 claims, or 2.8%, compared to the previous week's total of 10,105 claims, according to finalized data from the Nevada Department of Employment, Training and Rehabilitation (DETR). Through the week ending January 30, there have been a total of 834,138 initial claims filed since the week ending March 14, 2020.

Continued claims, which represent the current number of insured unemployed workers filing weekly for unemployment insurance benefits, totaled 80,891 claims, a decrease of 36 claims from the previous week's total of 80,927. Continued claims have seen little change over the last 6 weeks.

Nevada's Pandemic Emergency Unemployment Compensation (PEUC) program, which provides up to 13 weeks of benefits to individuals who have exhausted their regular unemployment benefits, saw 65,308 claims filed in the week, a decline of 3,820 claims from last week's total of 69,128. The passage of HR 133, Consolidated Appropriations Act, 2021, updated the number of available benefit weeks for the PEUC program. Originally 13 weeks, starting the week ending January 2, claimants may be eligible for up to an additional 11 weeks of PEUC in certain circumstances.

Nevada's State Extended Benefit (SEB) program, which provides additional benefits to individuals who have exhausted both their regular and PEUC program benefits, saw 66,066 claims filed in the week, an increase of 6,285 claims from a week ago. New guidance from the Department of Labor may require DETR to change the sequence of applying and paying out SEB benefits.

The insured unemployment rate for the regular UI program, which is the ratio of regular continued claims in a week to the total number of jobs covered by the unemployment insurance system (also known as covered employment), was 6.1%, unchanged from the previous week's rate. Including claimants in the benefit extension programs, the rate, more appropriately called the extended insured unemployment rate, was 16.0%. It should be noted that the calculation of the insured unemployment rate is different from that of the state's total unemployment rate.

The Pandemic Unemployment Assistance (PUA) program, which provides benefits for self-employed, 1099 contract workers, and gig workers saw 70,368 initial claims filed in the week ending January 30, a decline of 41,294 claims, or 37.0%, from last week's total of 111,662. Initial applications for the PUA program continue to be highly variable due to ongoing high levels of fraudulent applications. Through the week ending January 30, there have been a total of 1,032,652 PUA initial claims filed.

There were 118,708 PUA continued claims filed in the week ending January 30, an increase of 22,619 claims, or 23.5%, from the previous week's revised total of 96,089. This is the highest number of continued claims for the PUA program since early September. Following the passage of HR 133, additional weeks of benefits were made available to PUA claimants which may explain the increase in continued claims.

State level data from the U.S. Department of Labor can be found here [[DOL Weekly Claims Report](#)]. View the state level unemployment insurance claims report for the week ending January 30 here [[Weekly Report](#)]. A dashboard for Nevada weekly claims can be found here [[Weekly Dashboard](#)]. A monthly claims dashboard can be found here [[Monthly Dashboard](#)] and a monthly claims demographic page can be found here [[Monthly Demographics](#)]. See weekly county claims trends here [[Weekly by County](#)]. Dashboards are interactive reports that allow for deeper analysis of the data.

To file for unemployment in the State of Nevada, please use the online application available 24/7 at <http://ui.nv.gov/css.html>. People unable to file online may file via telephone by calling a UI Claims Call Center between 8 a.m. and 8 p.m., Monday through Friday. Northern UI Call Center: (775) 684-0350; Southern UI Call Center: (702) 486-0350; Rural areas and Out-of-State: (888) 890-8211. Claimants are encouraged to use the internet to file their UI claims, as it is the fastest and most convenient way to file and reserves the phone lines for individuals who are not able to file online. Online filing during non-peak hours, such as early mornings, at night or weekends is also highly recommended. To continue to receive benefits, claimants must file weekly.

DETR is actively working with law enforcement entities and the Department of Labor to detect, prevent and address unemployment fraud. Employers and individuals who believe they have been a victim of unemployment fraud, can file a report with the agency by visiting www.detr.nv.gov and selecting the [Unemployment Fraud tab](#) on the left under "Quick links" and clicking on "Report Fraud to DETR." Once a report is filed with the Department of Employment, Training and Rehabilitation (DETR), nothing else is required by the reporting party. DETR will flag the account so payments are not issued. If needed, the Department may reach out for additional information. To view what additional steps individuals and employers can take if they believe a fraudulent claim has been filed, review DETR's [fraud flyer](#) located on the Bulletin Board at www.detr.nv.gov.

For Nevada workers who are self-employed, 1099 contract workers, and gig workers, Nevada's Pandemic Unemployment Assistance program (PUA) is available. For further information regarding the PUA program visit, detr.nv.gov/pua#. Individuals will be able to file online at www.employnv.gov or call the PUA Call Center at (800) 603-9681 or 775-298-6007 or 702-998-3081 between 8 a.m. and 8 p.m., Monday through Friday, and Saturday between 8 a.m. and noon.

Claimants are encouraged to visit <http://ui.nv.gov/css.html> and detr.nv.gov/coronavirus to view important announcements and access essential resources. Online tutorial videos are also available in both English and Spanish and can be viewed on the [Nevada Unemployment Insurance](#) YouTube page.

###

Visit us <http://www.nevadaworkforce.com> and Follow us on Twitter: <http://www.twitter.com/NVlabormarket>

ABOUT THE RESEARCH AND ANALYSIS BUREAU

The Research and Analysis Bureau is Nevada's premier source for labor market information. A part of DETR, the Bureau is responsible for creating, analyzing, and reporting Nevada's labor market information, in cooperation with the United States Bureau of Labor Statistics (BLS).



State of Nevada Unemployment Insurance Claims

Filing Statistics for Week Ending 1/30/2021

Department of Employment, Training & Rehabilitation

Elisa Cafferata, Director

Lynda Parven, Administrator

David Schmidt, Chief Economist

*Prepared by the Research and Analysis Bureau
Updated: 2021-02-04*

Weekly Federal UI Claim Statistics

UI Initial Claims by Week

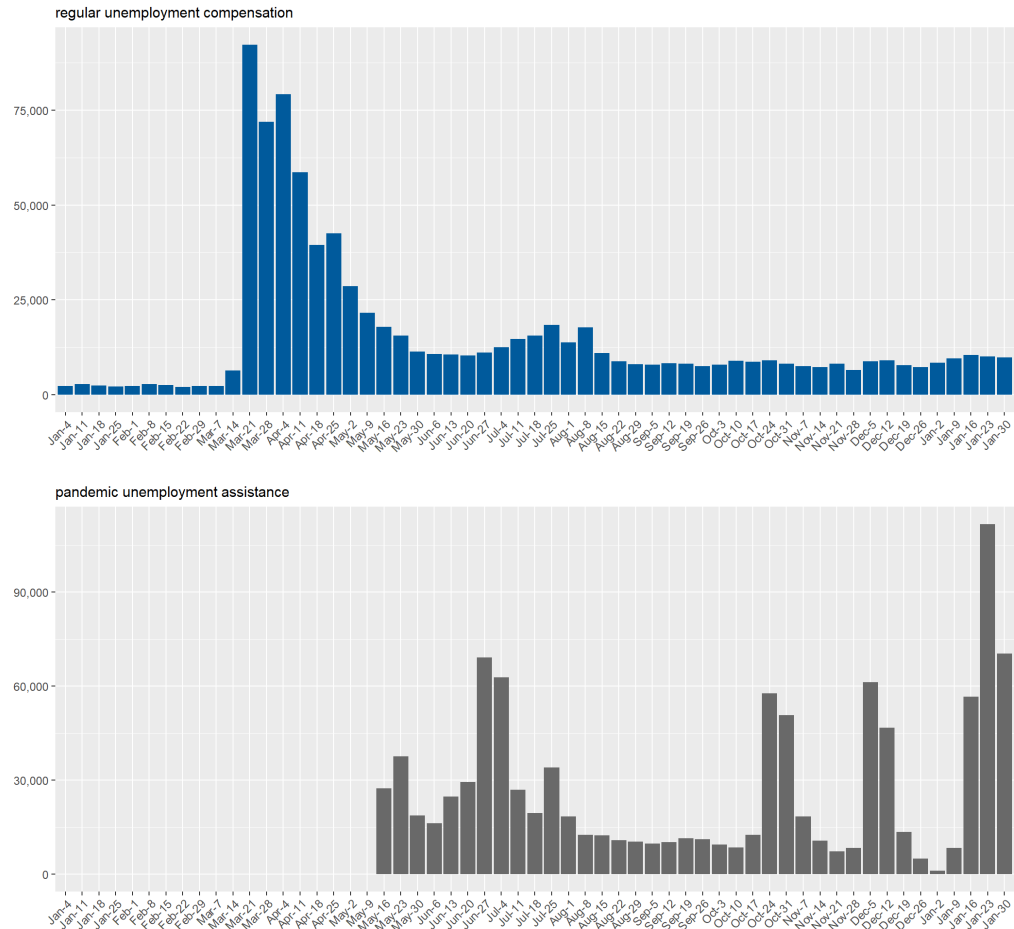
Final initial claims totals for week ending 1/30/2021 (ETA 539).

Regular initial claims totaled 9,821 in the week, down 284 claims, or 2.8%, compared to the previous week.

Pandemic Unemployment Assistance (PUA) claims totaled 70,368 in the week, down 41,294, or 37.0%, compared to the previous week.

A claimant may have filed BOTH a regular initial claim and a PUA initial claim.

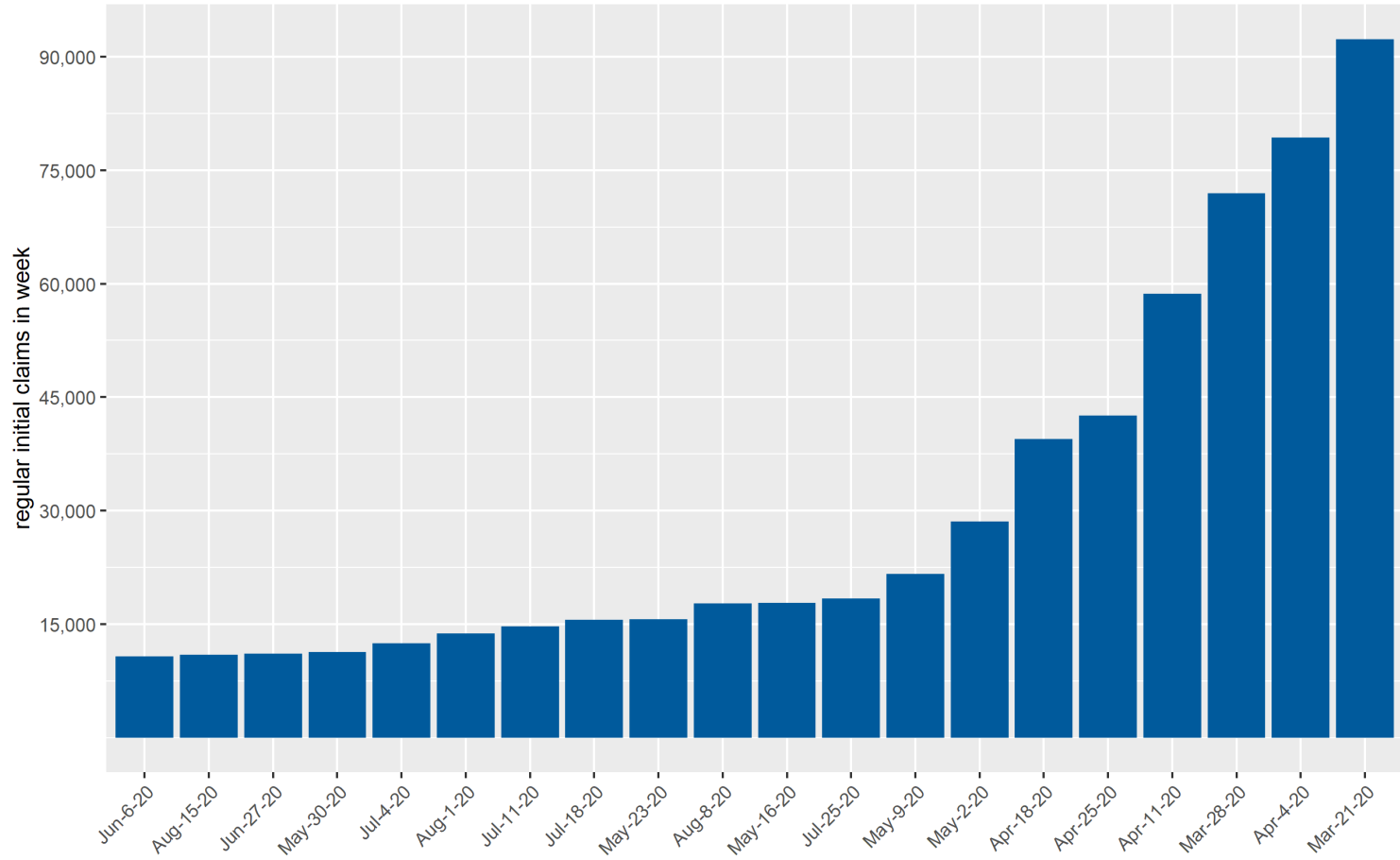
State of Nevada Weekly Initial Claims for Unemployment Insurance by program



Source: ETA 539

State of Nevada Initial Claims All-Time Weekly Highs

State of Nevada Weekly Initial Claims
highest 20 weeks in state history



Source: ETA 539

UI Continued Claims by Week

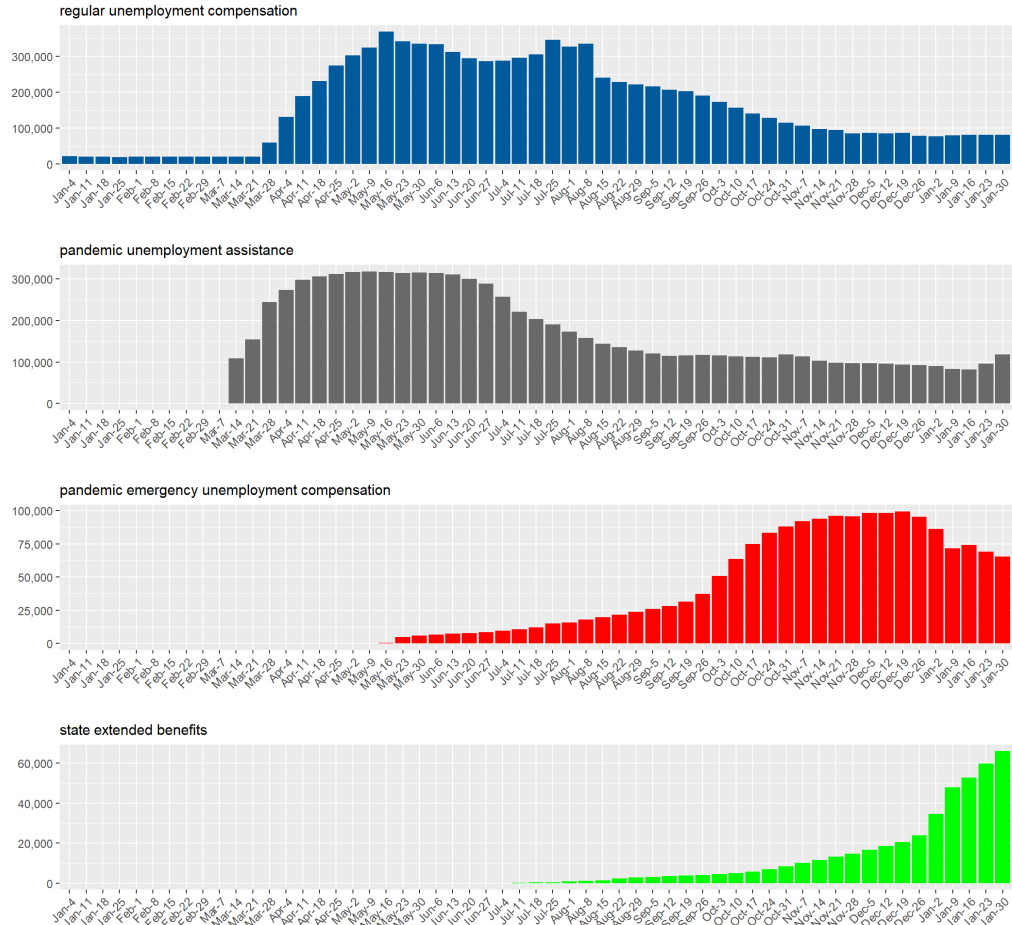
Regular continued claims totaled 80,891 in the week, down 36 claims, or 0.0%, compared to the previous week.

Pandemic Unemployment Assistance continued claims totaled 118,708 in the week, up 22,619 claims, or 23.5%, compared to the previous week. PUA continued claims are backdated to show the weeks PUA was claimed.

Pandemic Emergency Unemployment Compensation claims totaled 65,308 in the week, down 3,820 claims, or 5.5%, compared to the previous week.

State Extended Benefit claims totaled 66,066 in the week, up 6,285 claims, or 10.5%, compared to the previous week.

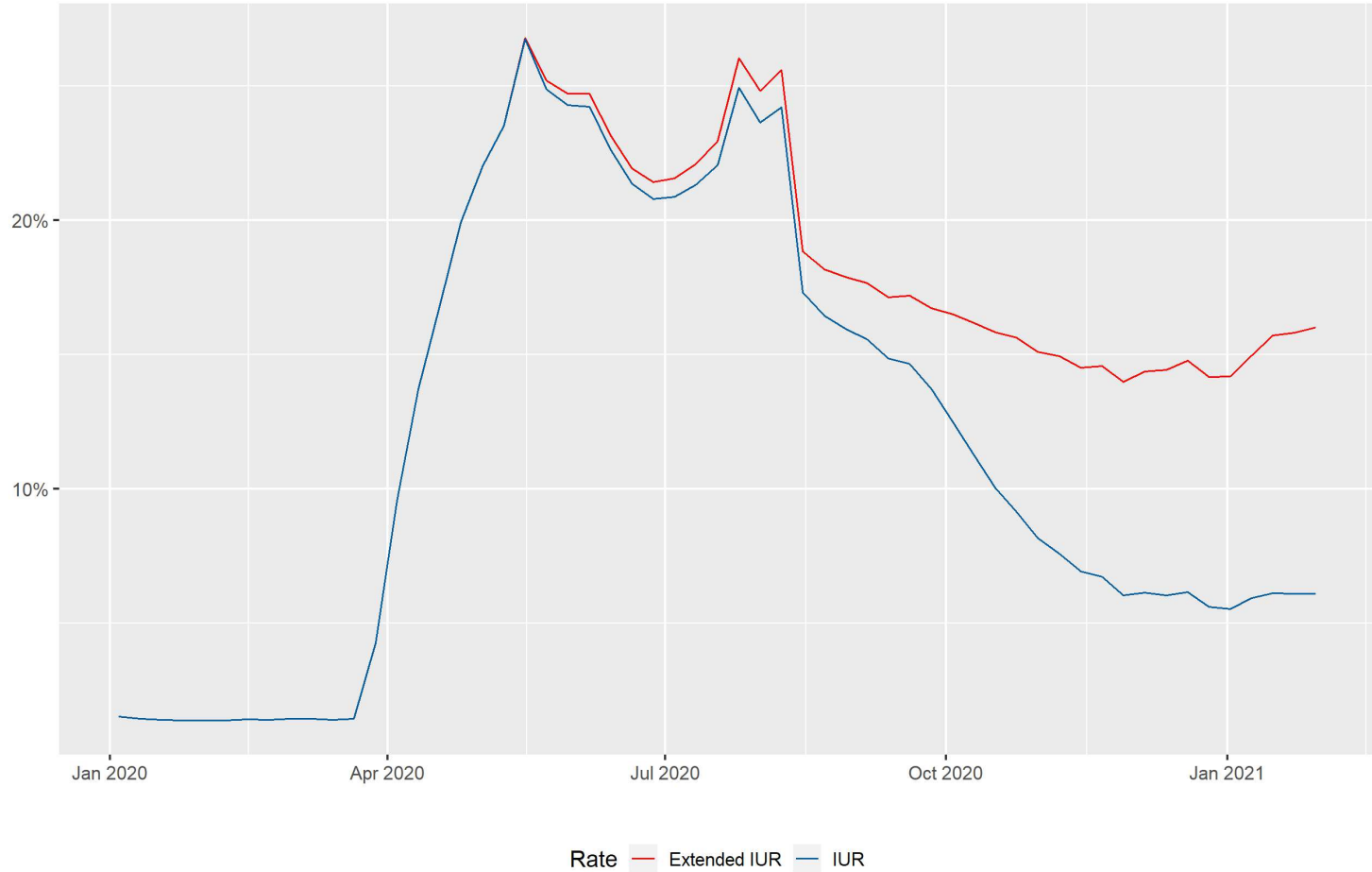
State of Nevada Weekly Continued Claims for Unemployment Insurance by program



Source: ETA 539

Insured Unemployment Rate

State of Nevada Insured Unemployment Rate
weekly rate for regular and extension programs

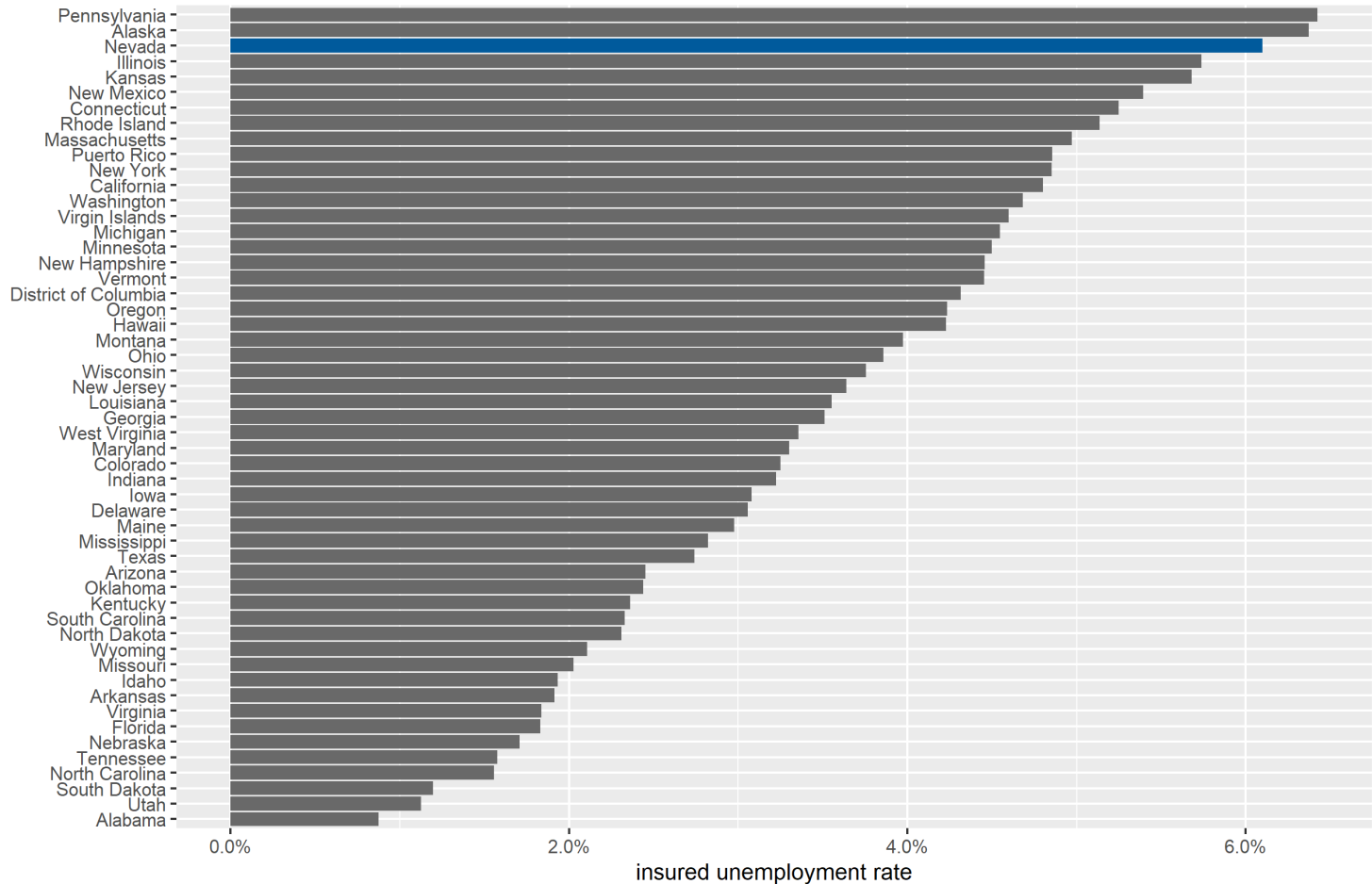


Source: ETA 539

Insured Unemployment Rate by State

Insured Unemployment Rate by State

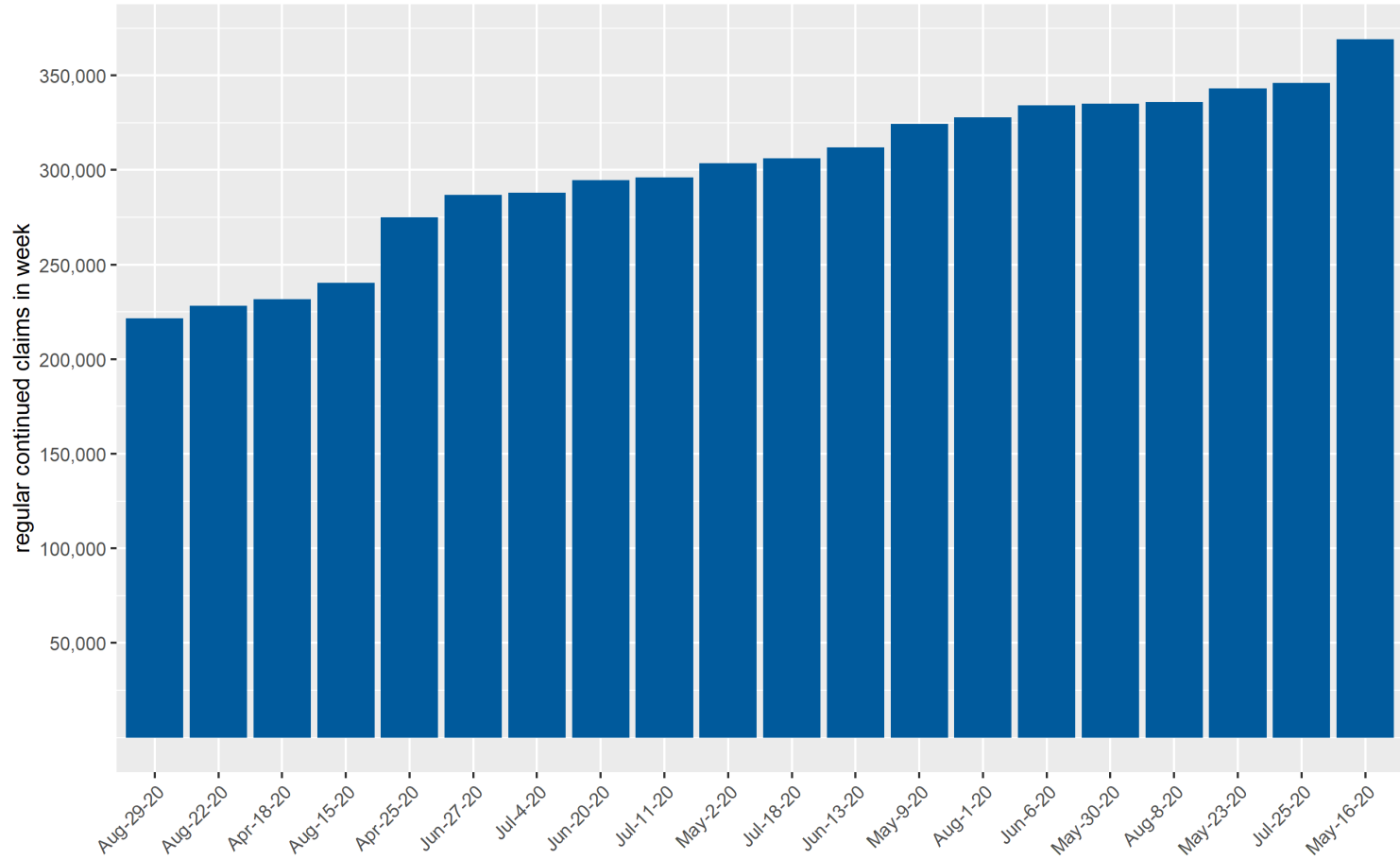
weekly rate by state for most recent available week



Source: ETA 539

State of Nevada Continued Claims All-Time Weekly Highs

State of Nevada Weekly Continued Claims
highest 20 weeks in state history



Source: ETA 539

UI Trust Fund Status

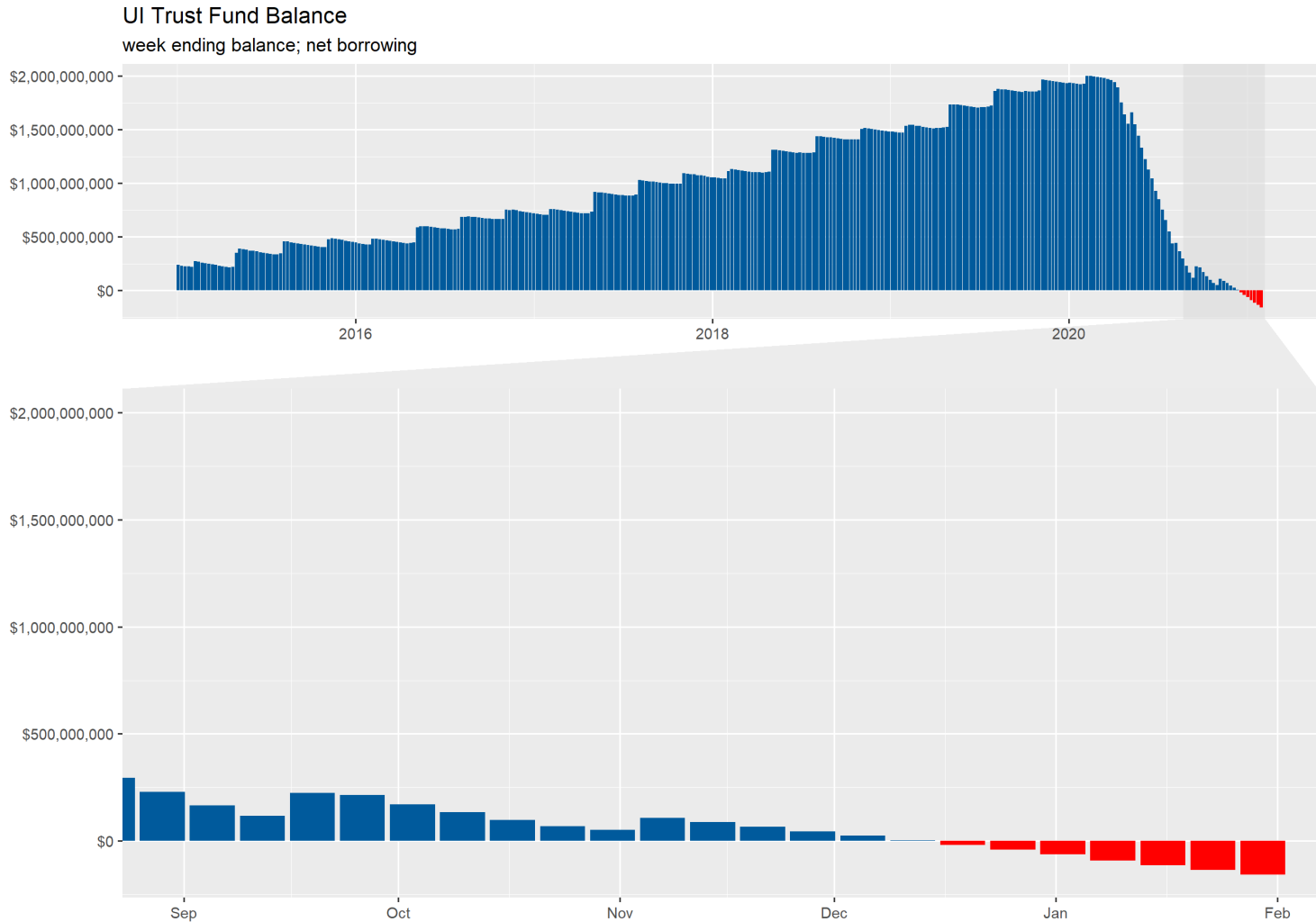
UI Trust Fund Balance & Payment Activity

Reported totals and amounts for week ending 1/30/2021

The Trust Fund Balance is the end of week balance from DETR Financial Management reports less Federal Unemployment Account loans. Due to lags in reporting of transactions and adjustments, week-to-week totals may change. Weeks of benefits remaining is no longer being reported.

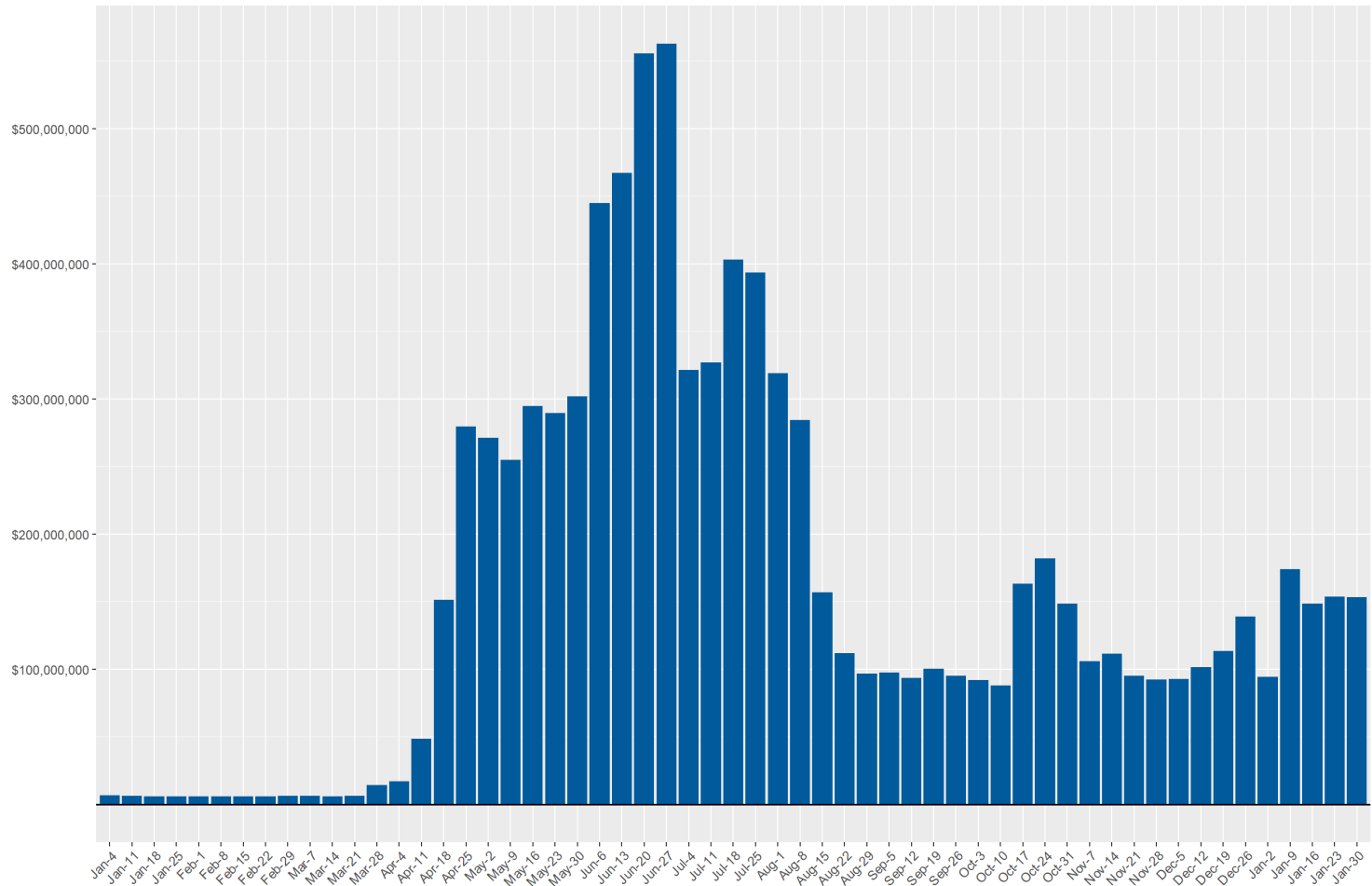
Measure	Current Week	Previous Week	Change from Previous Week	Since 3/14/2020
Trust Fund Balance (Net Borrowing)	-\$156,656,718	-\$135,499,959	-\$21,156,759	-
FUA Borrowing	\$21,156,759	\$22,062,009	-\$905,250	\$156,656,718
Regular UI Payments	\$30,089,874	\$30,423,242	-\$333,368	\$2,987,617,660
Regular-FPUC Payments	\$50,955,390	\$49,399,170	\$1,556,220	\$3,124,725,254
PEUC Payments	\$16,930,259	\$18,143,478	-\$1,213,219	\$538,346,434
PUA Payments	\$17,242,753	\$18,667,993	-\$1,425,240	\$855,114,713
PUA-FPUC Payments	\$18,572,101	\$20,056,428	-\$1,484,326	\$1,016,518,993
SEB Payments	\$17,862,471	\$15,392,521	\$2,469,950	\$103,939,499
LWA Payments	\$574,140	\$471,480	\$102,660	\$295,269,840
LWA-PUA Payments	\$1,000,680	\$919,620	\$81,060	\$90,211,440
All Programs	\$153,227,668	\$153,473,931	-\$246,263	\$9,011,743,833

Trust Fund Balance



Weekly Payments

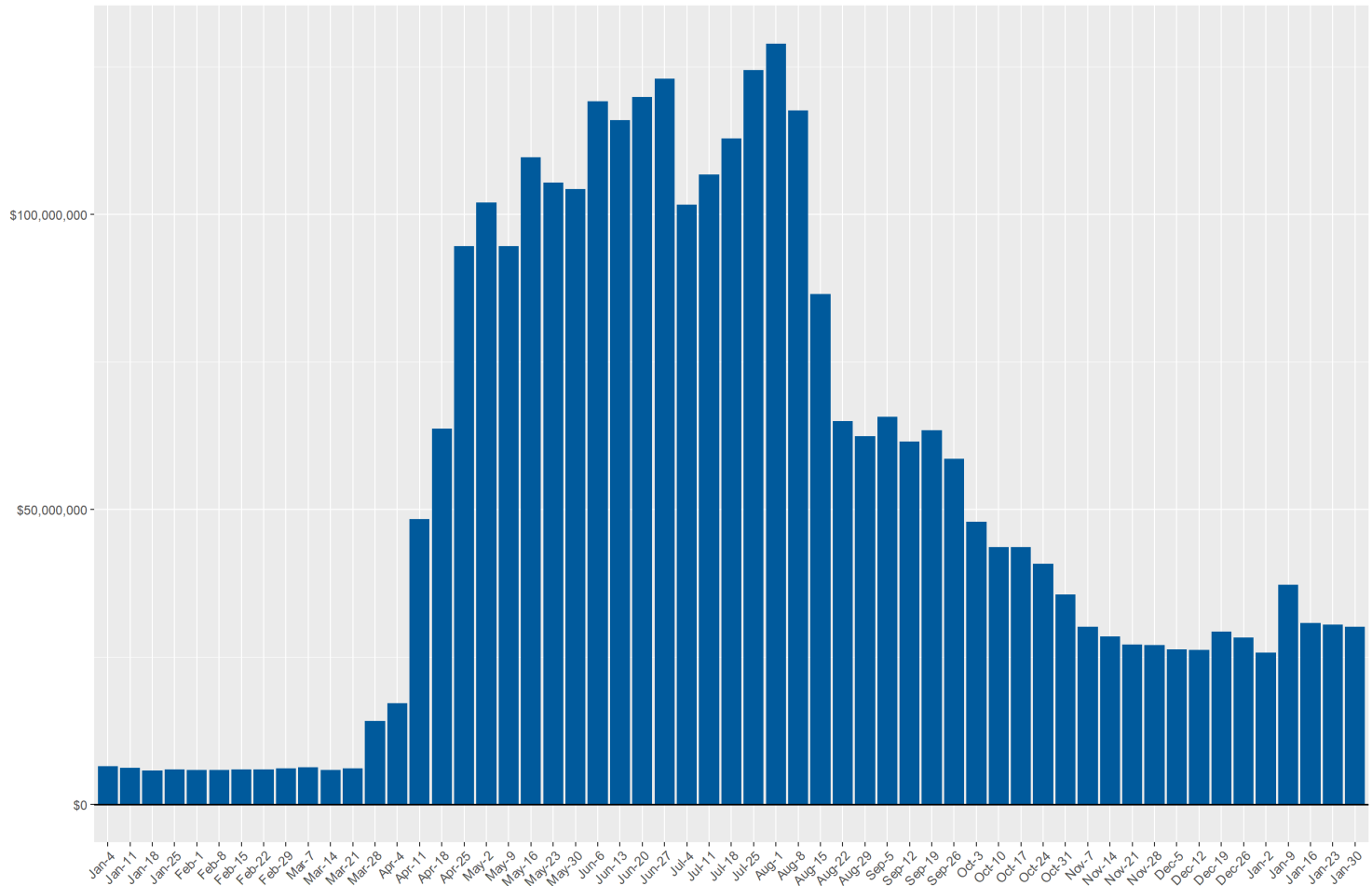
Unemployment Insurance Weekly Payments
compensation total for all programs



Source: DETR Internal Reporting

Weekly Payments by Program (Regular UI)

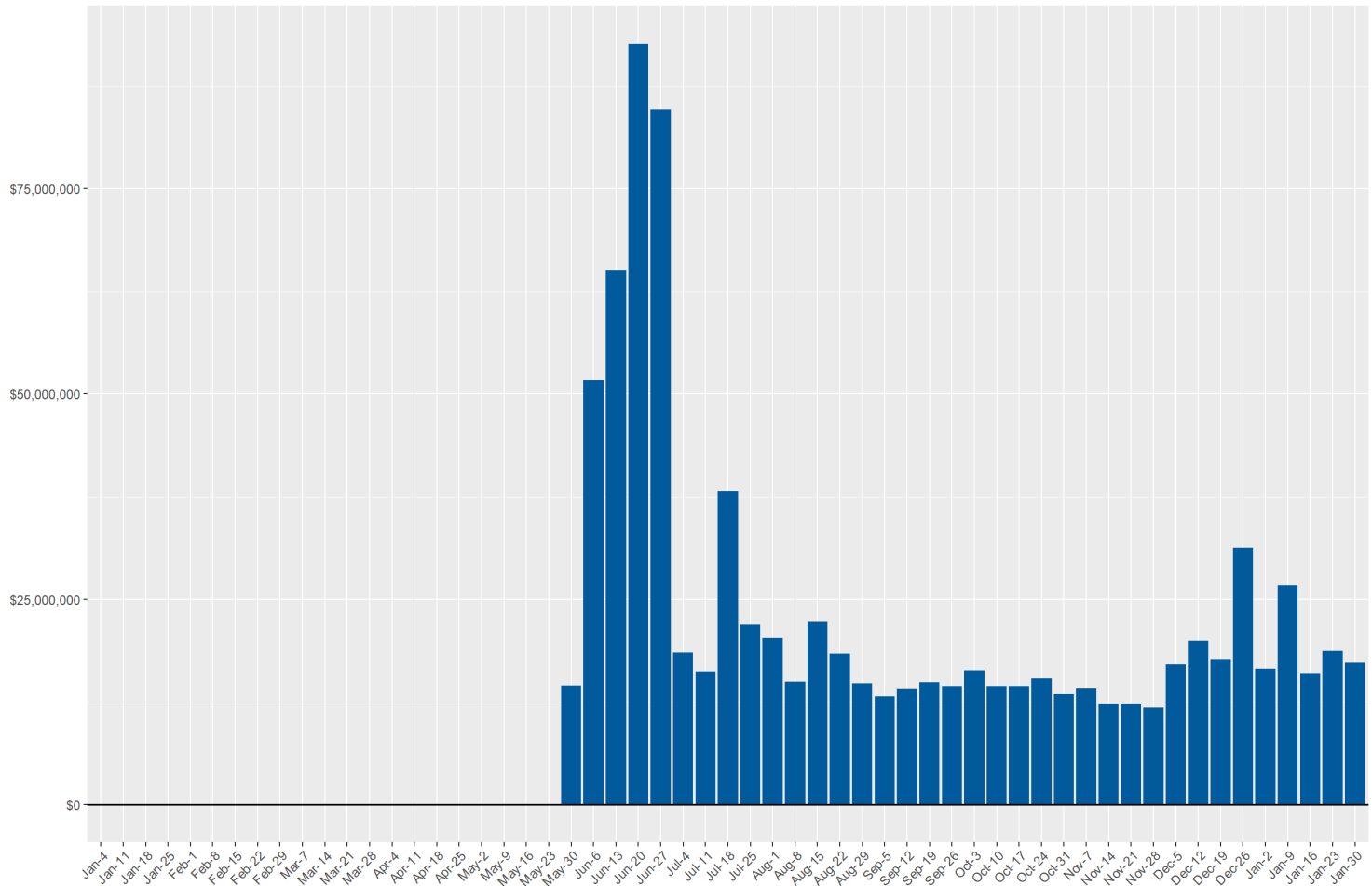
Unemployment Insurance Weekly Payments
regular unemployment insurance compensation



Source: DETR Internal Reporting

Weekly Payments by Program (PUA)

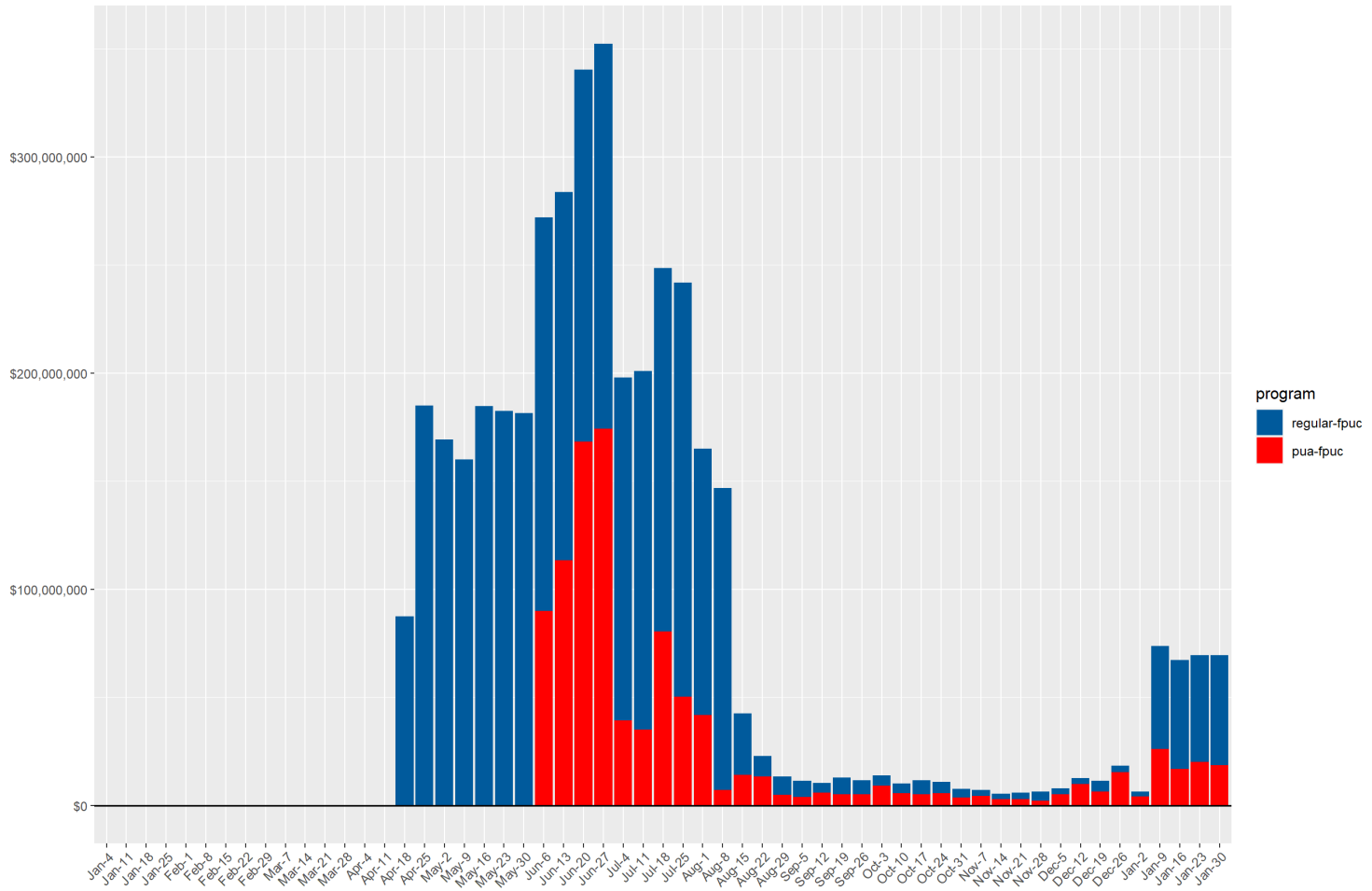
Unemployment Insurance Weekly Payments
pandemic unemployment assistance compensation



Source: DETR Internal Reporting

Weekly Payments by Program (FPUC)

Unemployment Insurance Weekly Payments
federal pandemic unemployment compensation

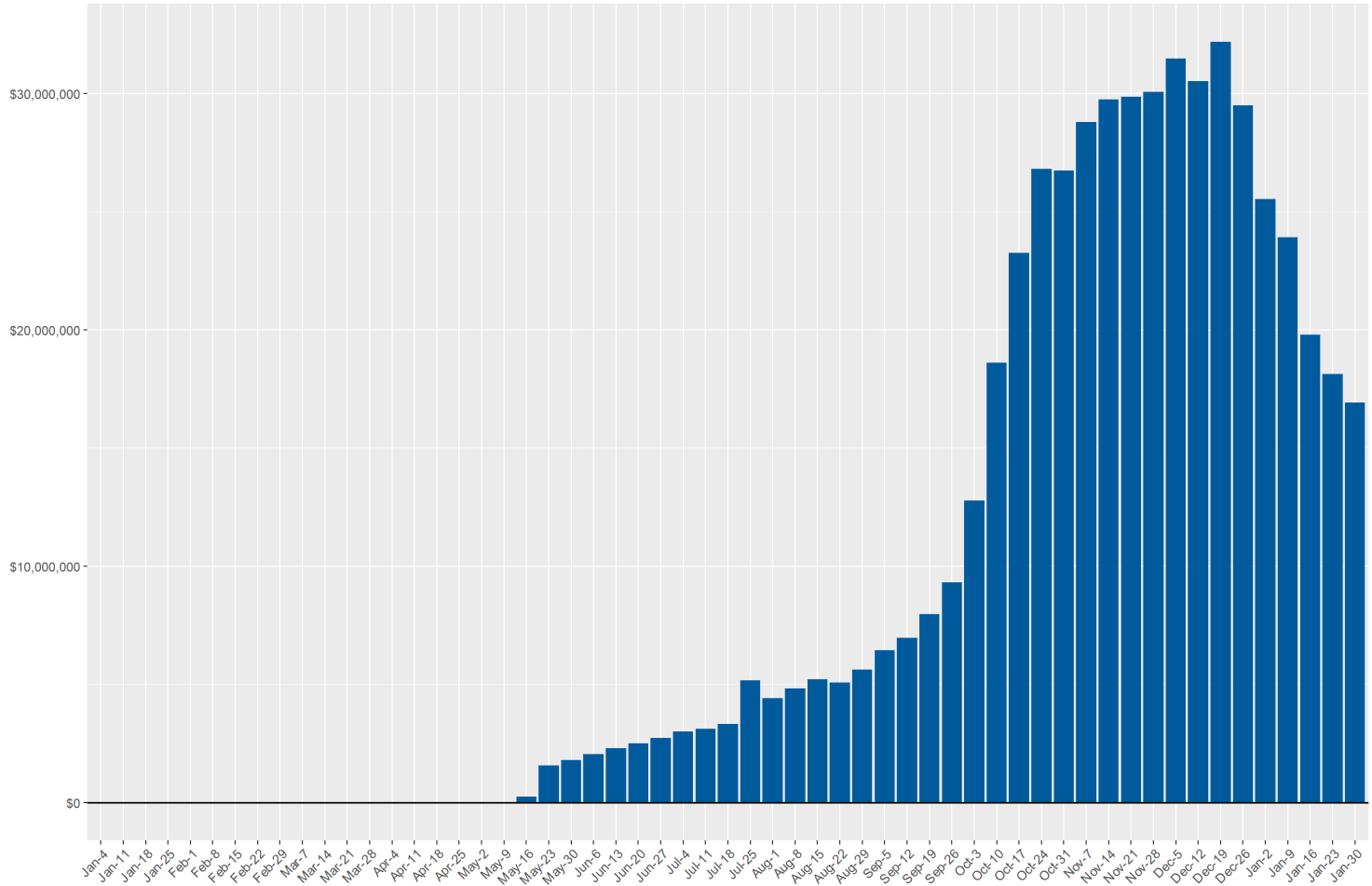


Source: DETR Internal Reporting

Weekly Payments by Program (PEUC)

Unemployment Insurance Weekly Payments

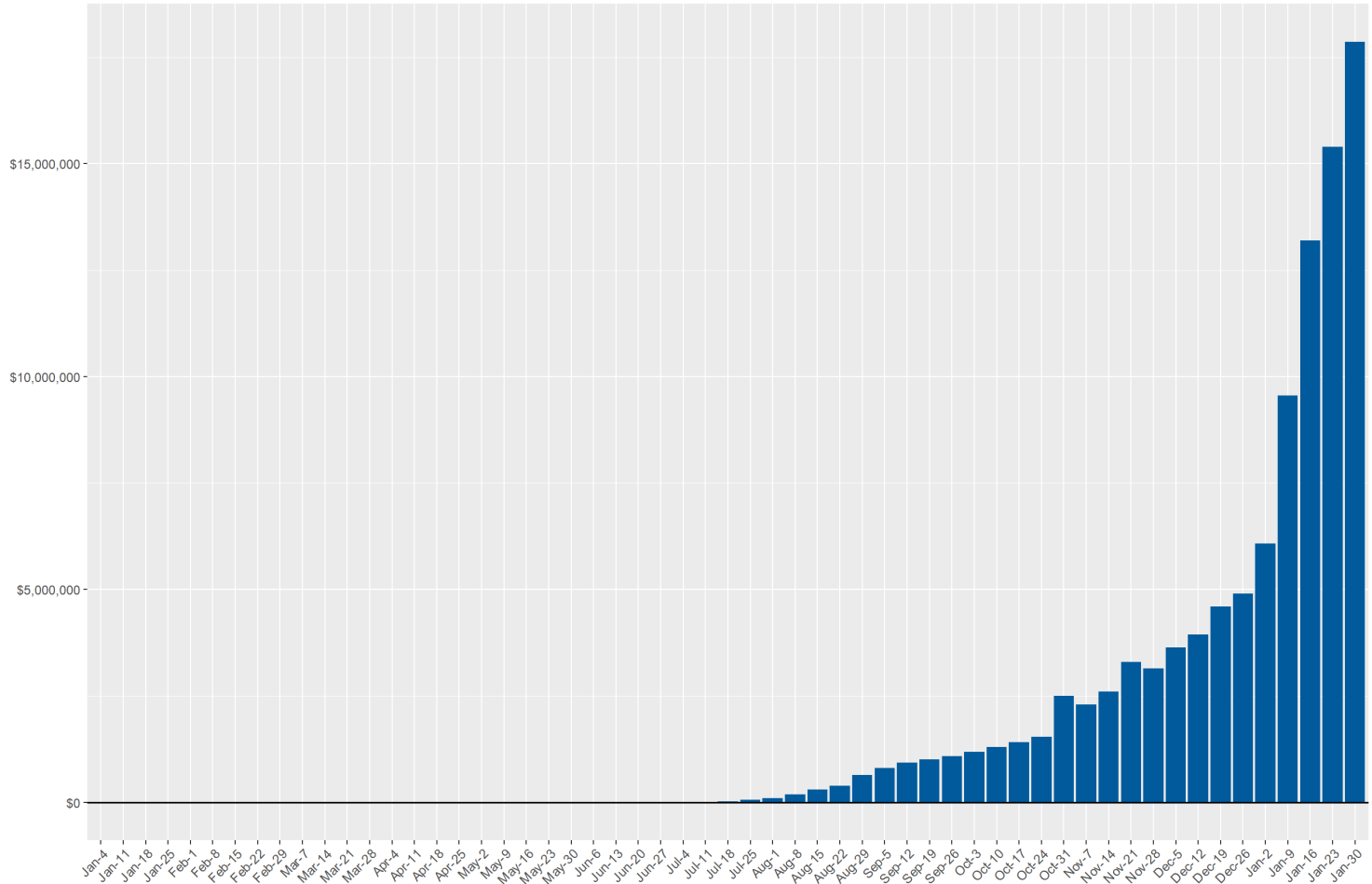
federal pandemic emergency unemployment compensation



Source: DETR Internal Reporting

Weekly Payments by Program (SEB)

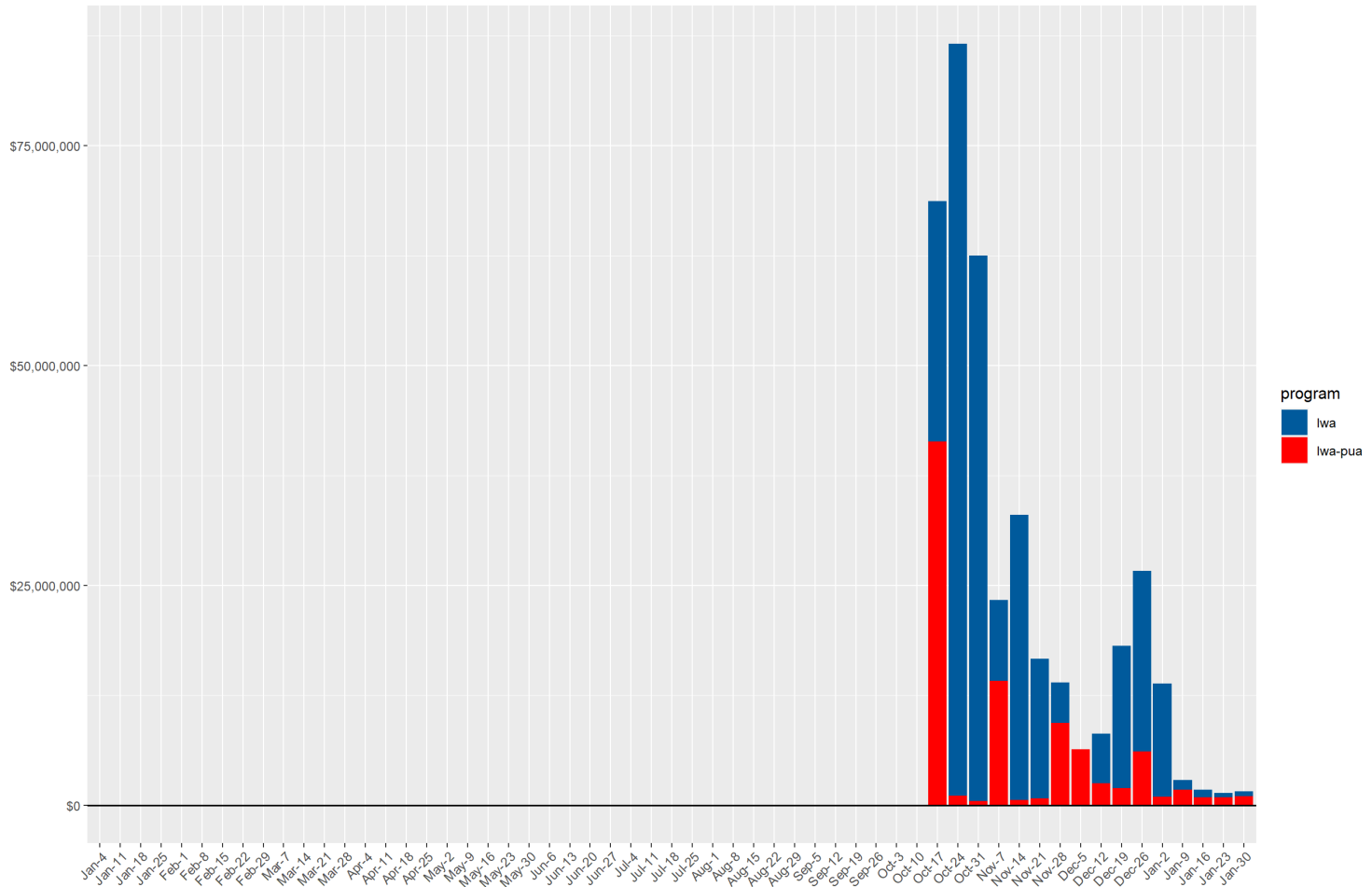
Unemployment Insurance Weekly Payments
state extended benefits compensation



Source: DETR Internal Reporting

Weekly Payments by Program (LWA)

Unemployment Insurance Weekly Payments
lost wages assistance compensation

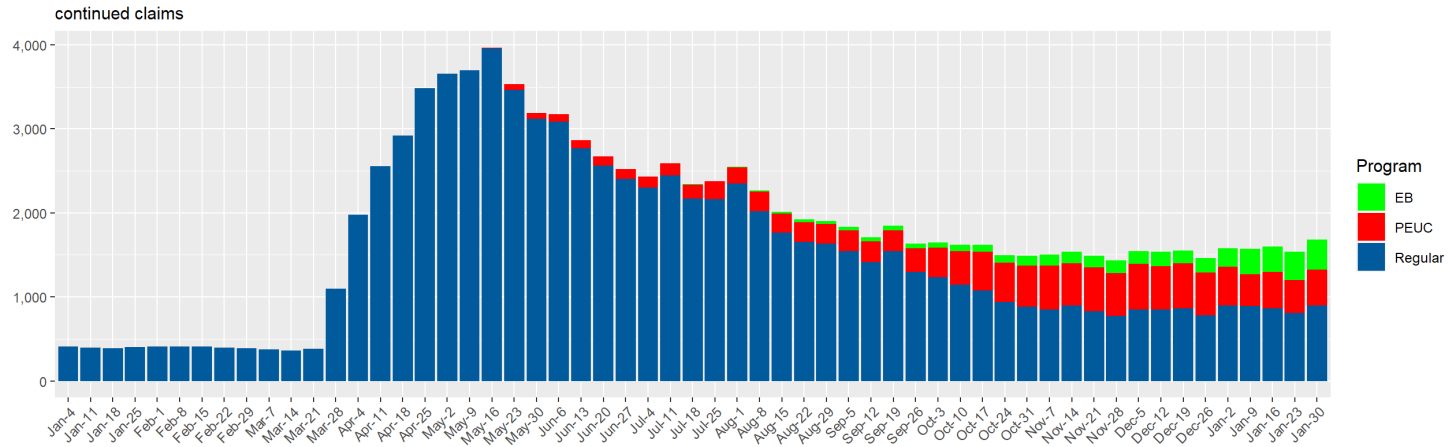
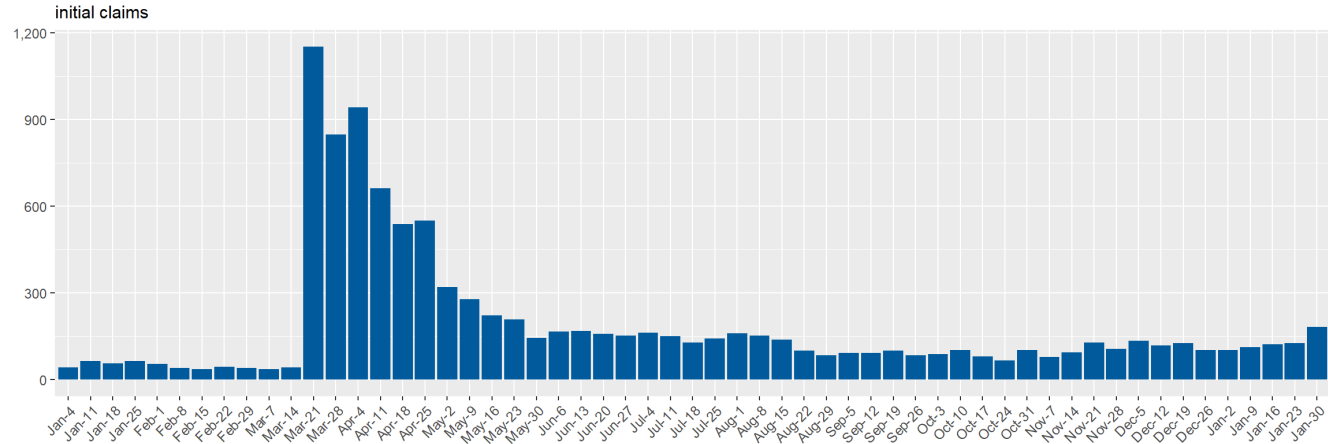


Source: DETR Internal Reporting

Claims by County

UI Claims for Carson City

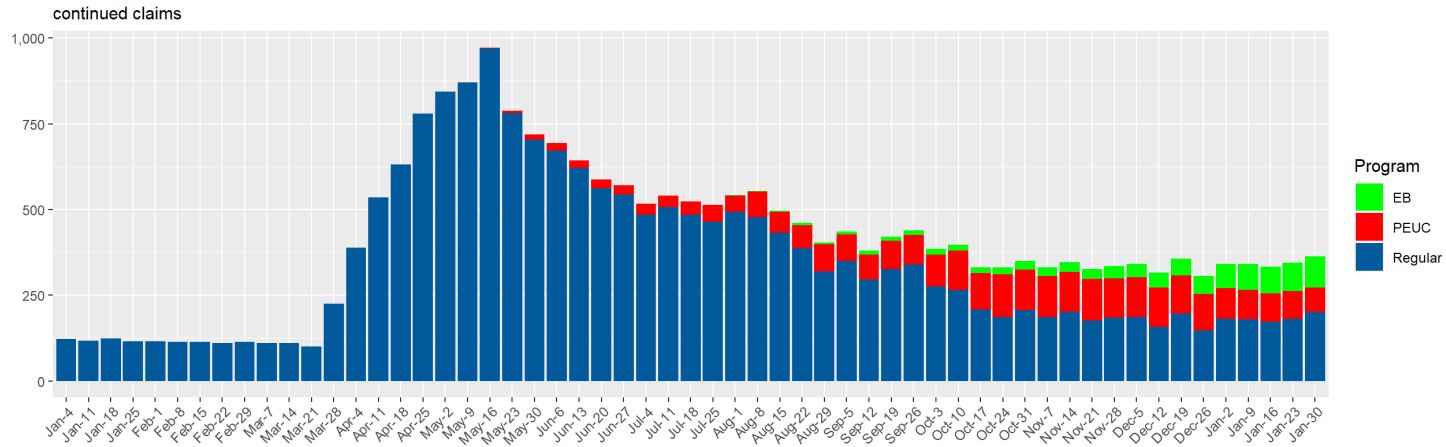
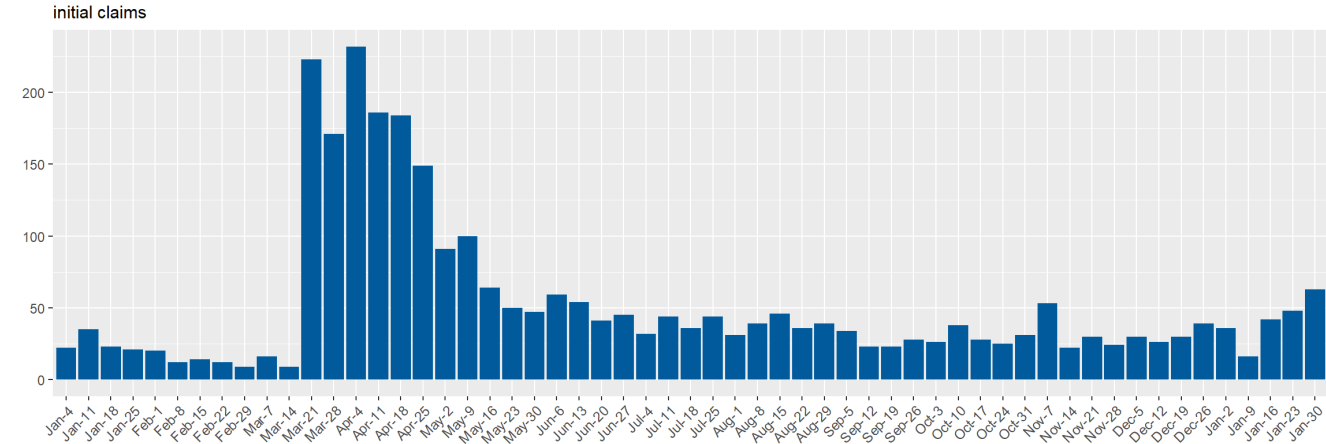
Carson City Unemployment Insurance Claims by Week since January 2020



Source: DETR Internal Reporting

UI Claims for Churchill County

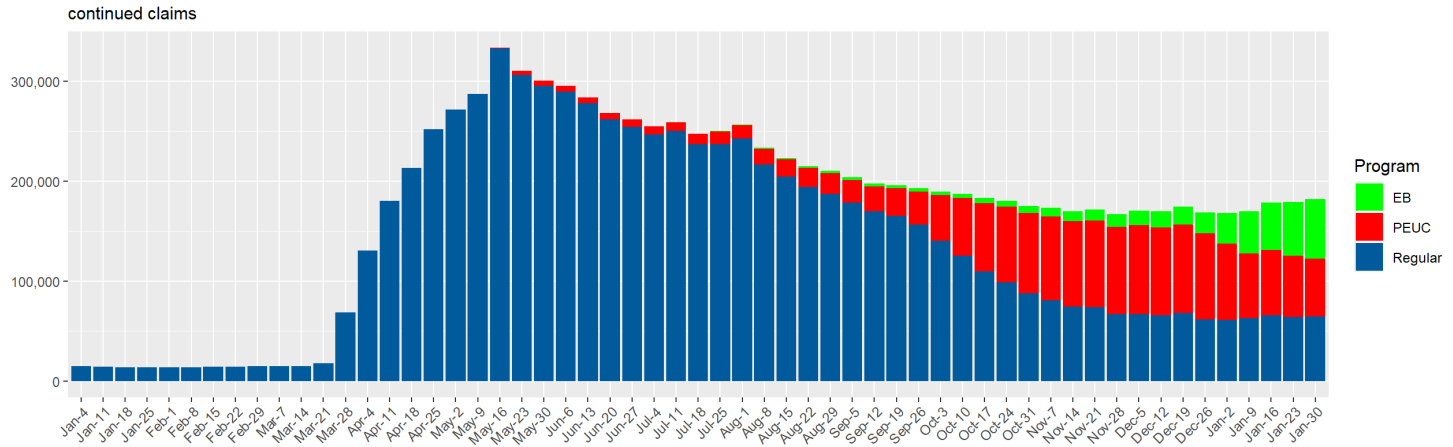
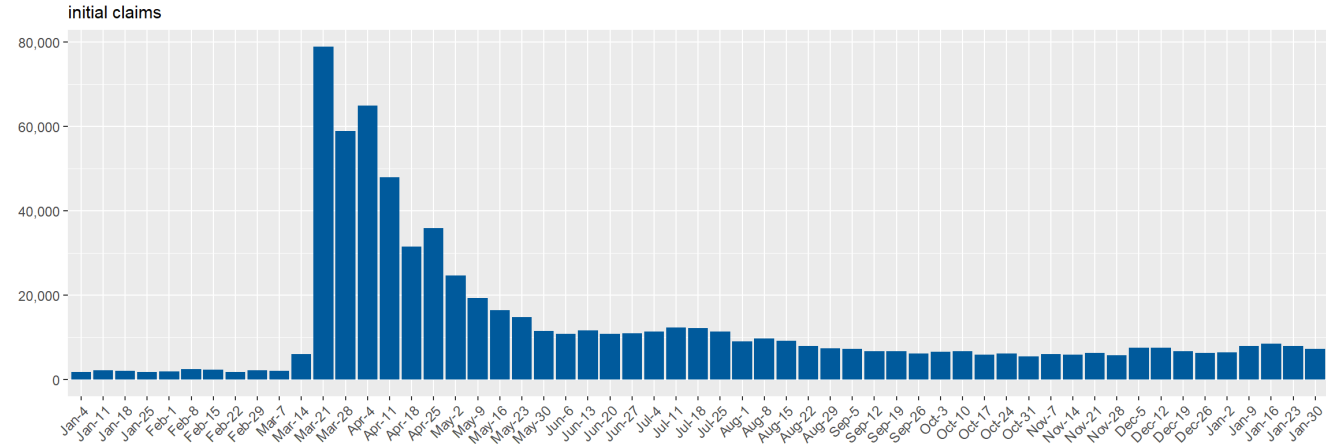
Churchill County Unemployment Insurance Claims by Week since January 2020



Source: DETR Internal Reporting

UI Claims for Clark County

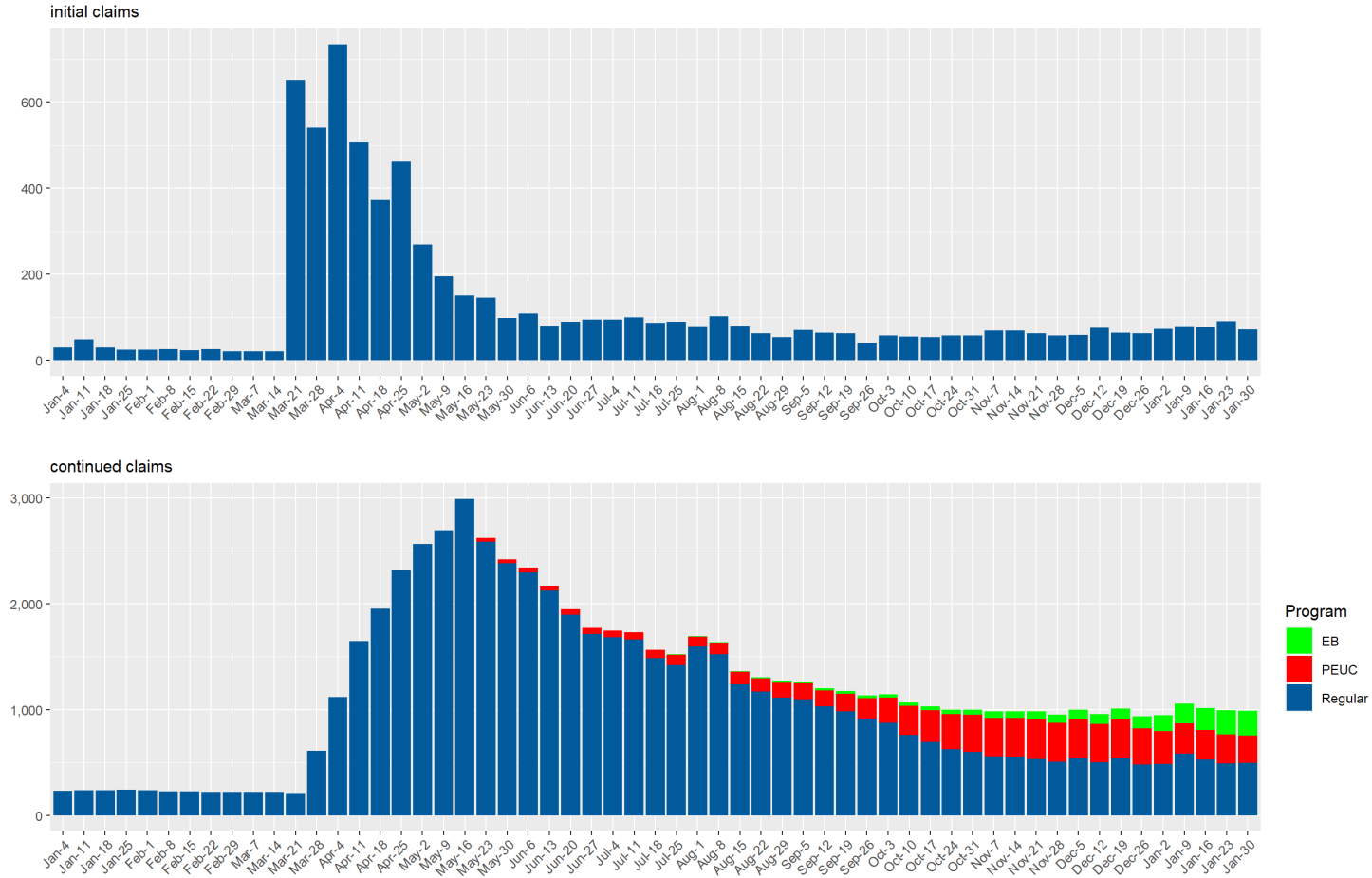
Clark County Unemployment Insurance Claims by Week since January 2020



Source: DETR Internal Reporting

UI Claims for Douglas County

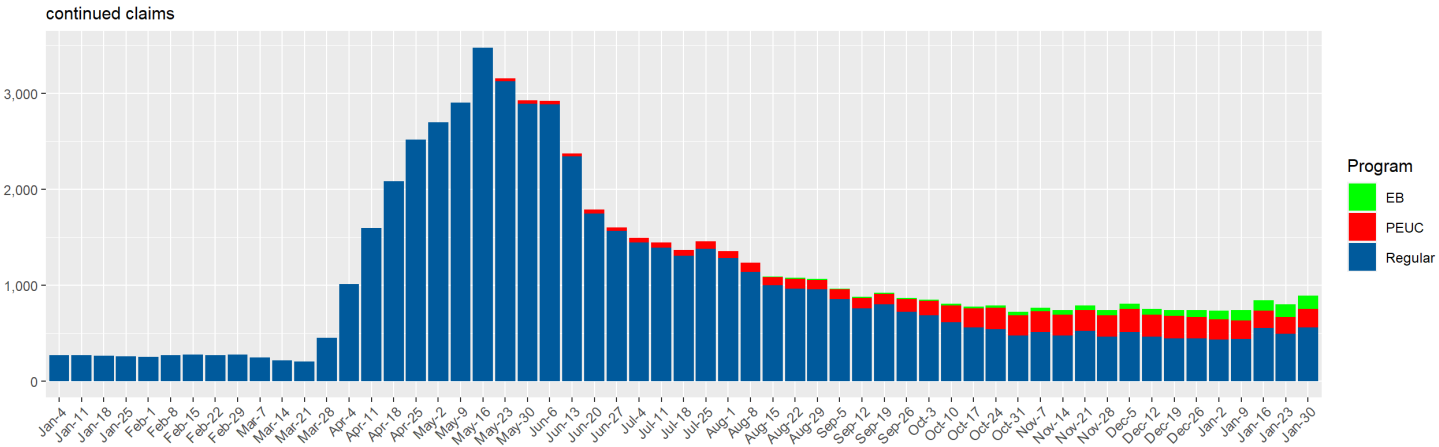
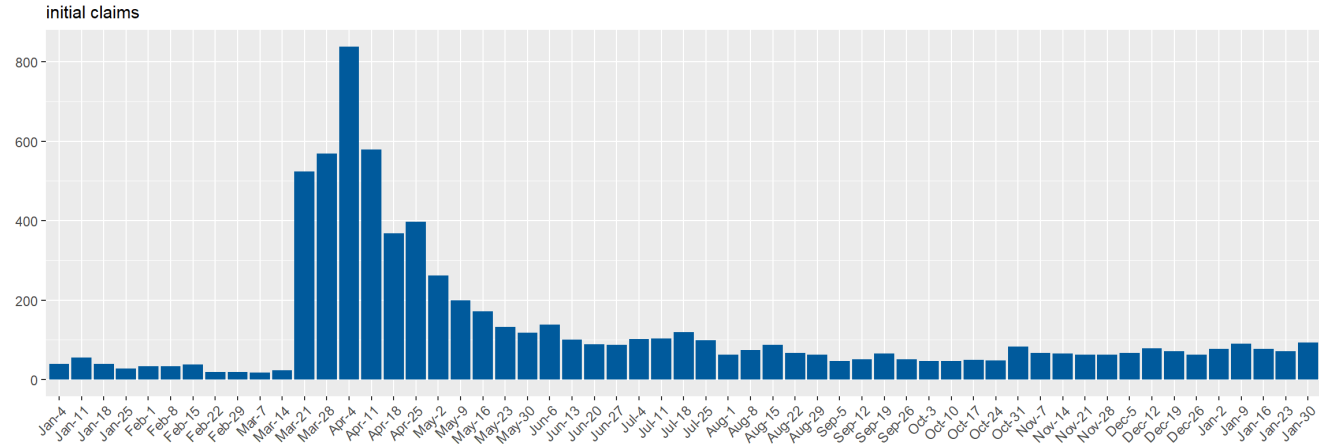
Douglas County Unemployment Insurance Claims by Week since January 2020



Source: DETR Internal Reporting

UI Claims for Elko County

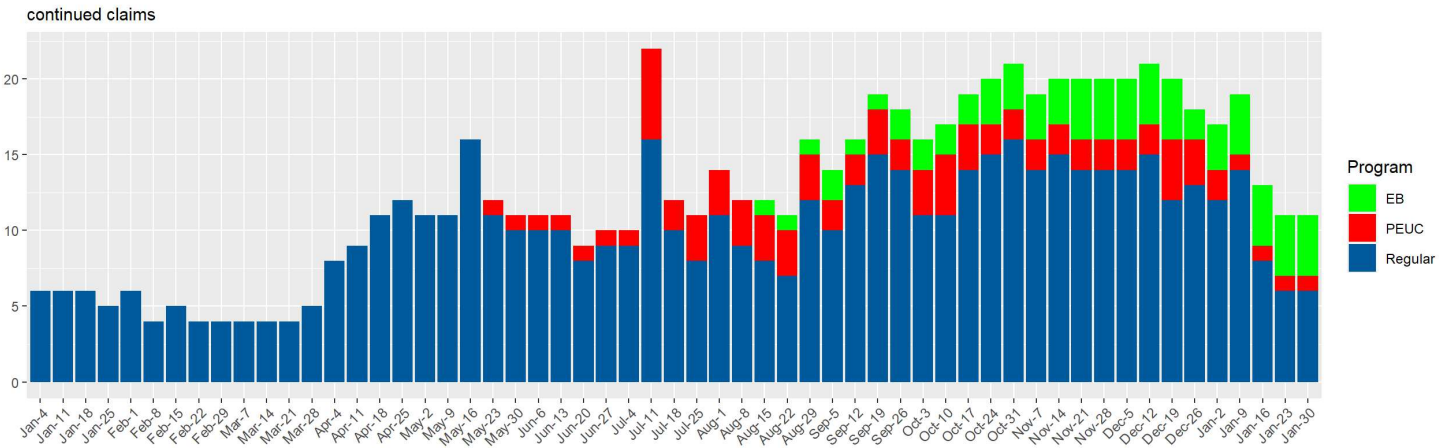
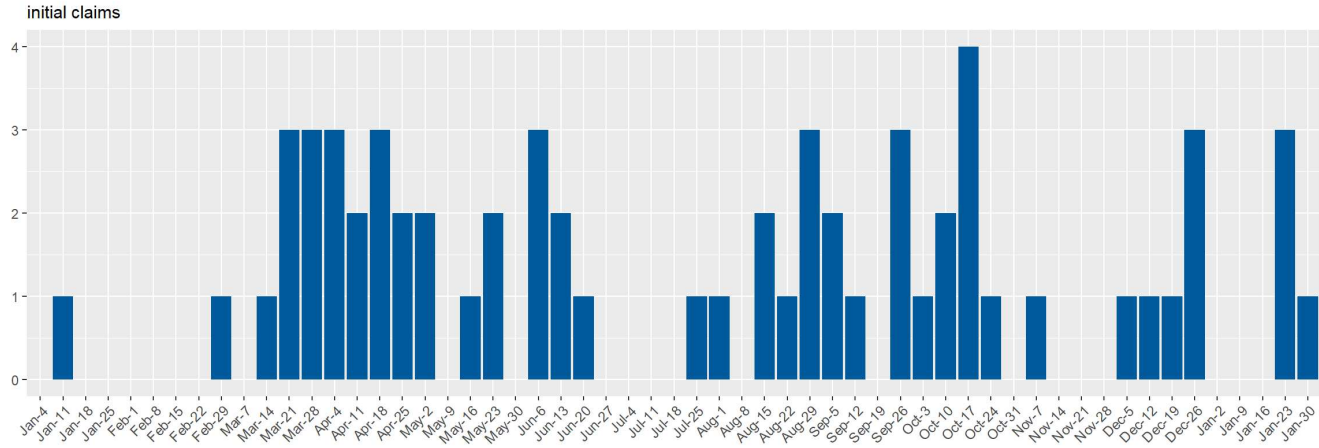
Elko County Unemployment Insurance Claims by Week since January 2020



Source: DETR Internal Reporting

UI Claims for Esmeralda County

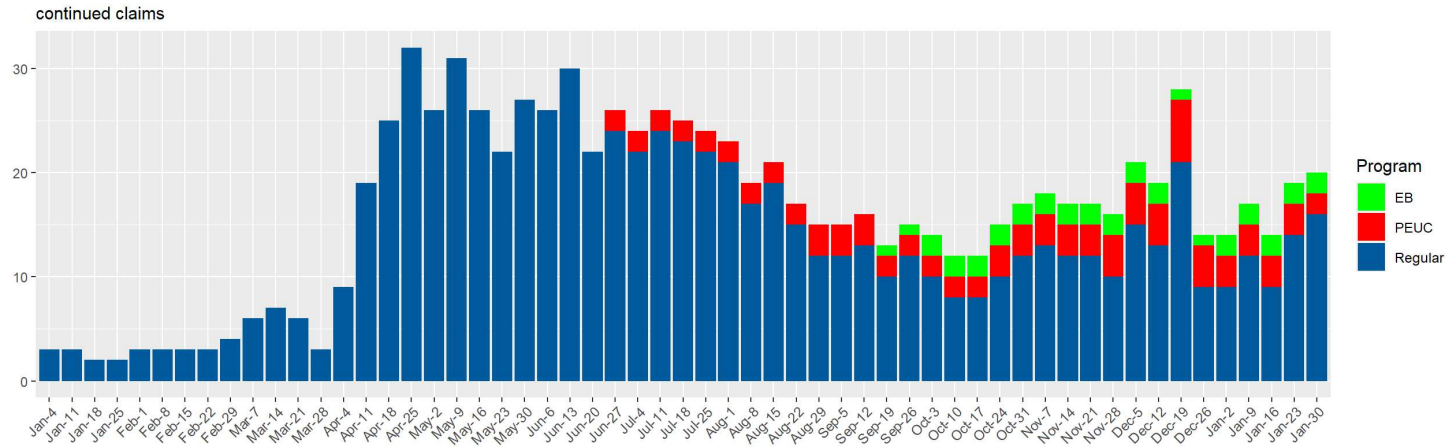
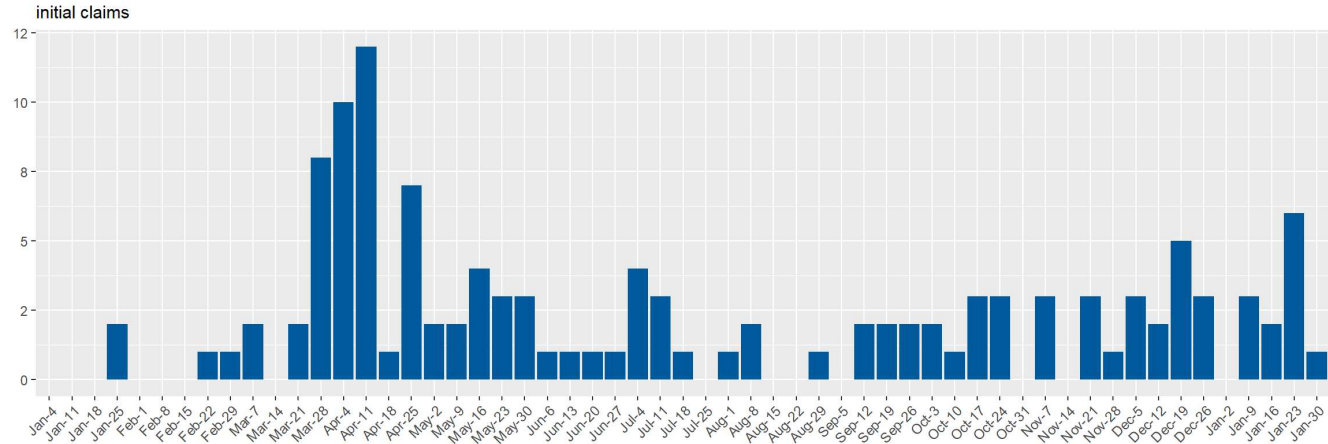
Esmeralda County Unemployment Insurance Claims by Week since January 2020



Source: DETR Internal Reporting

UI Claims for Eureka County

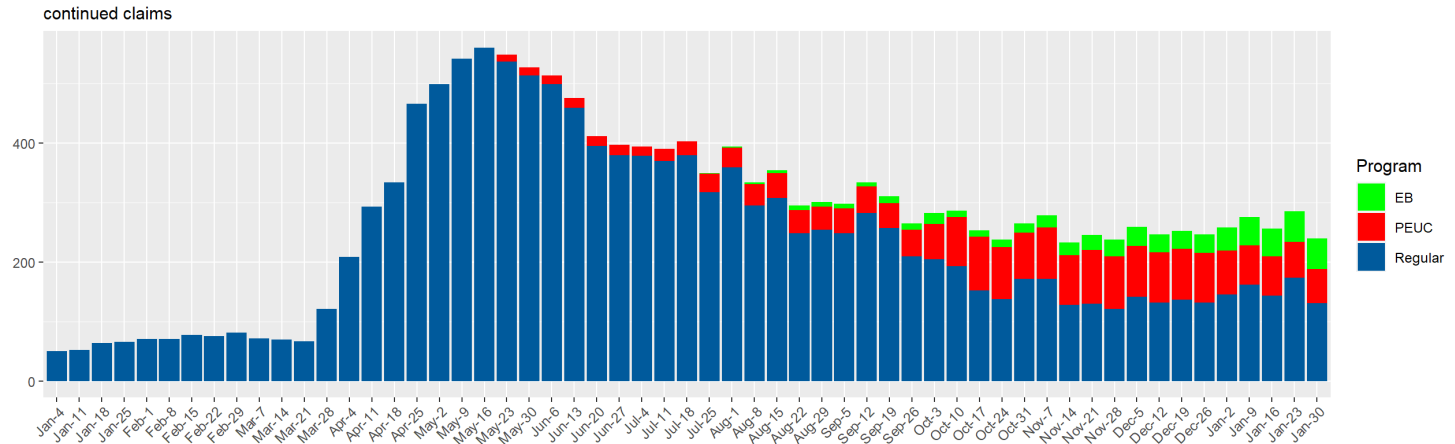
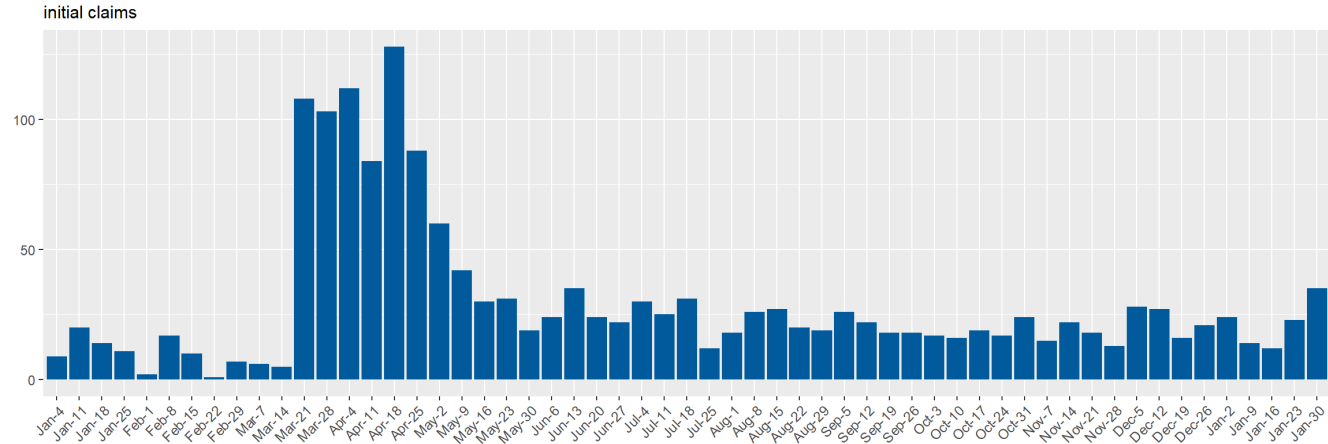
Eureka County Unemployment Insurance Claims by Week since January 2020



Source: DETR Internal Reporting

UI Claims for Humboldt County

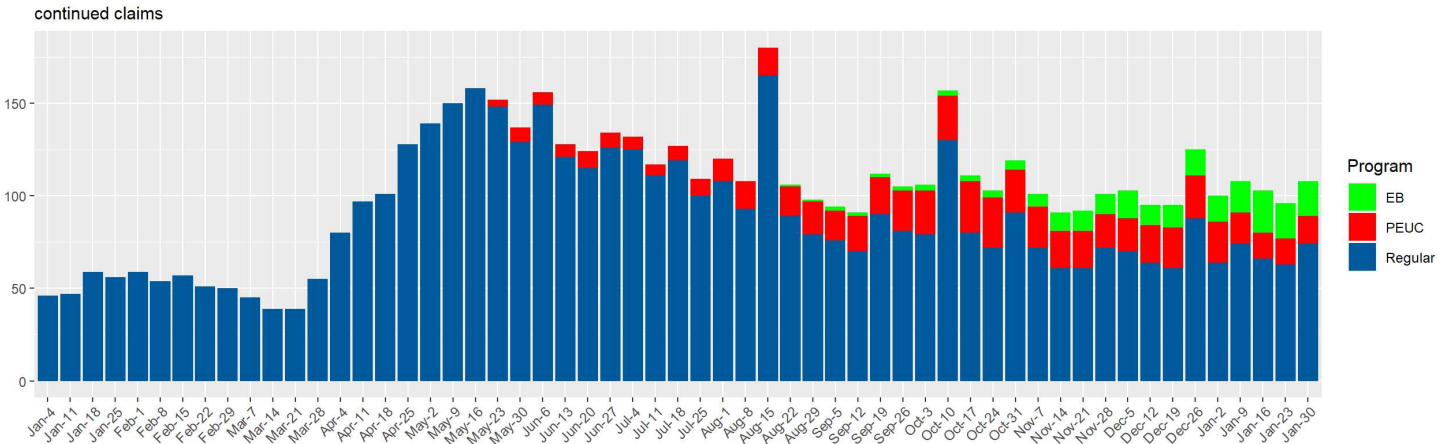
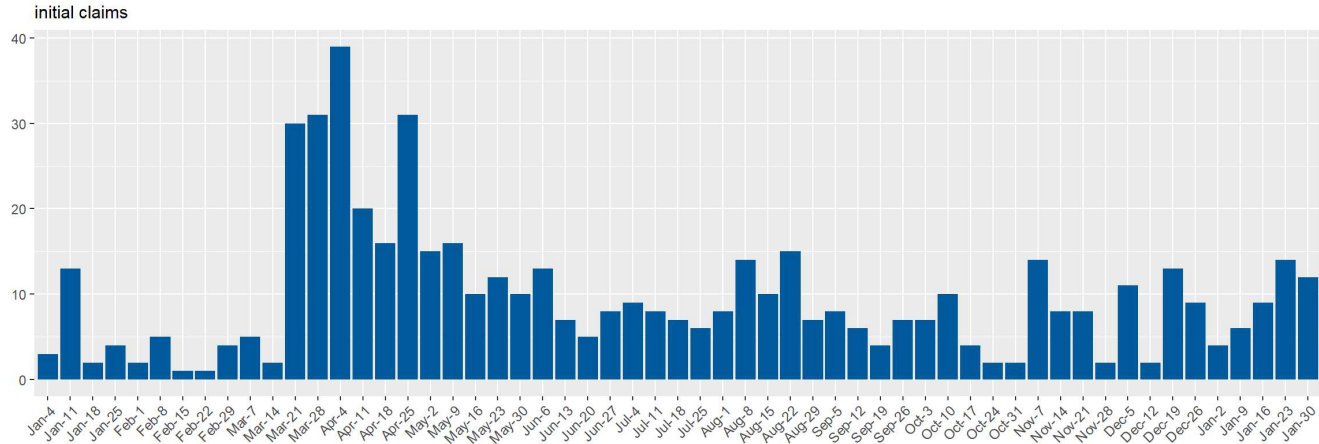
Humboldt County Unemployment Insurance Claims by Week since January 2020



Source: DETR Internal Reporting

UI Claims for Lander County

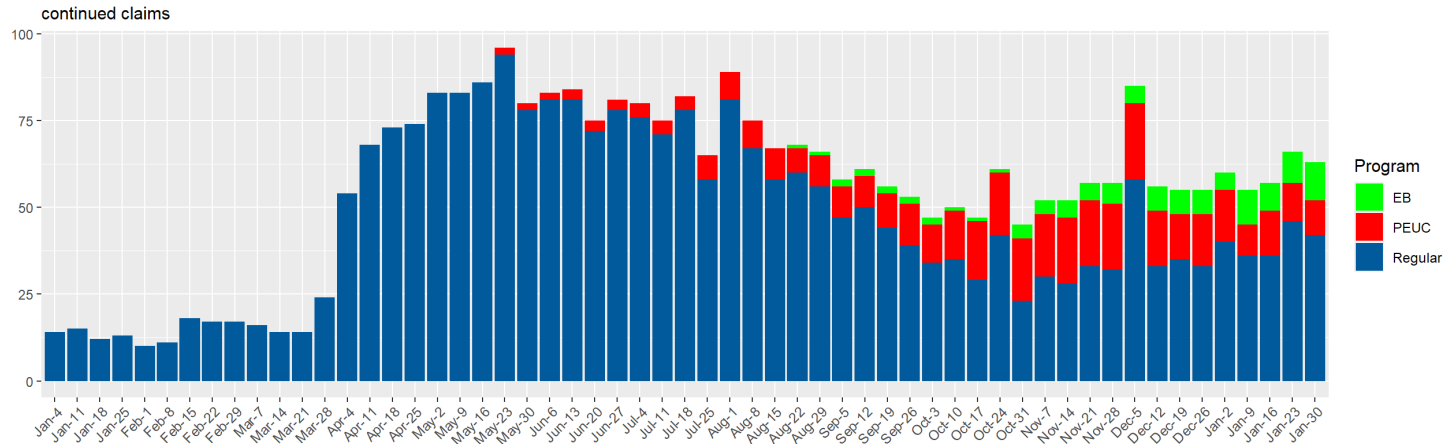
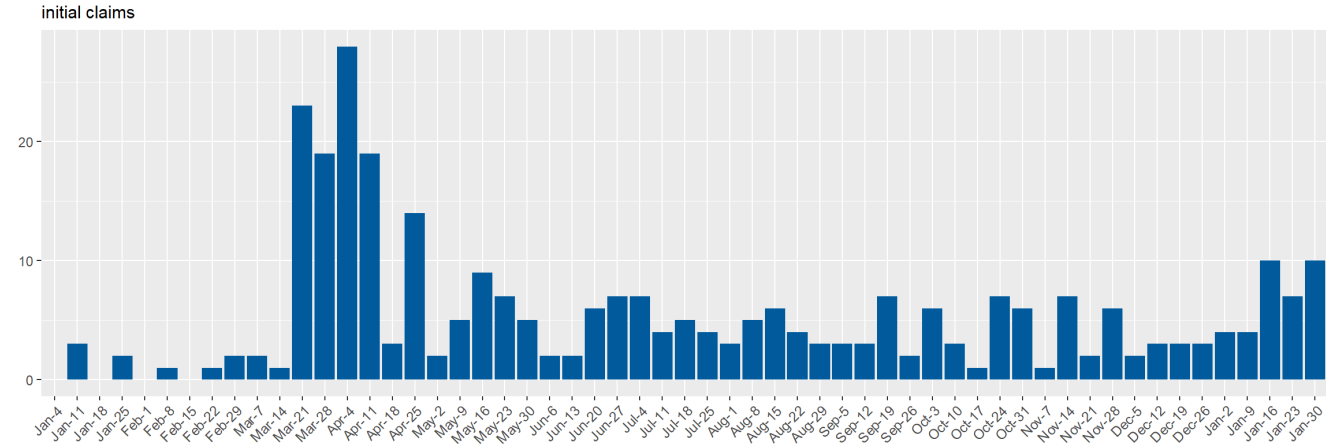
Lander County Unemployment Insurance Claims by Week since January 2020



Source: DETR Internal Reporting

UI Claims for Lincoln County

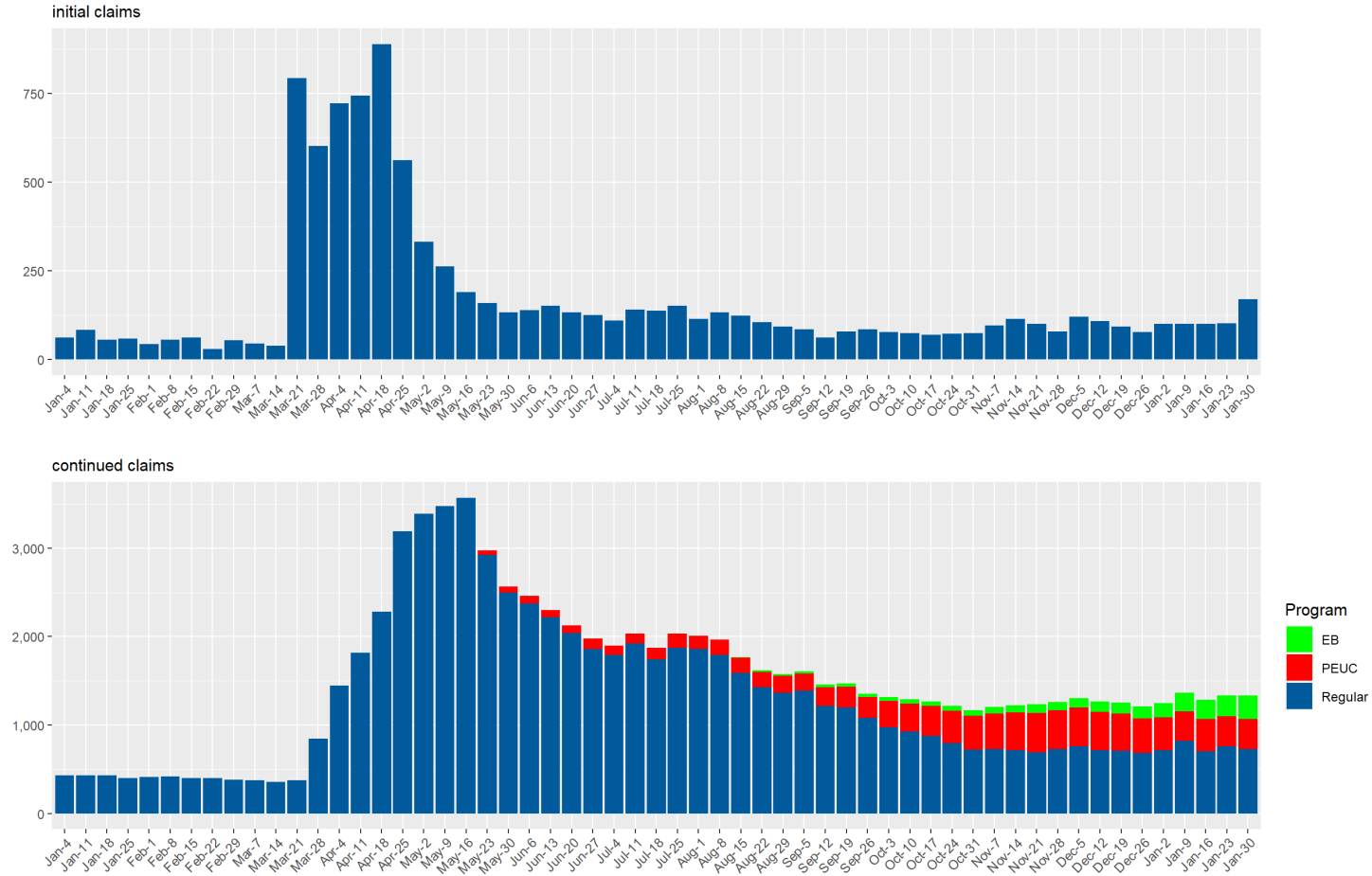
Lincoln County Unemployment Insurance Claims by Week since January 2020



Source: DETR Internal Reporting

UI Claims for Lyon County

Lyon County Unemployment Insurance Claims by Week since January 2020

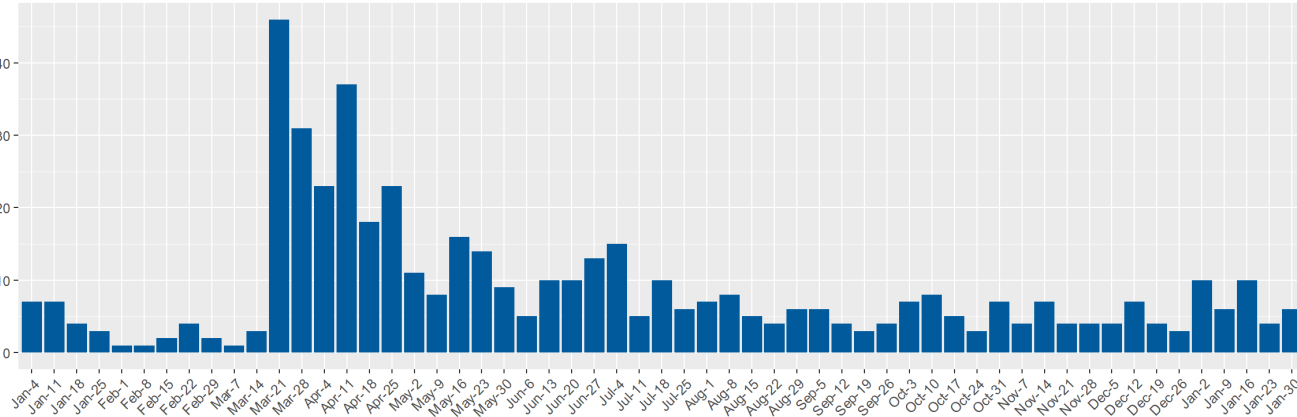


Source: DETR Internal Reporting

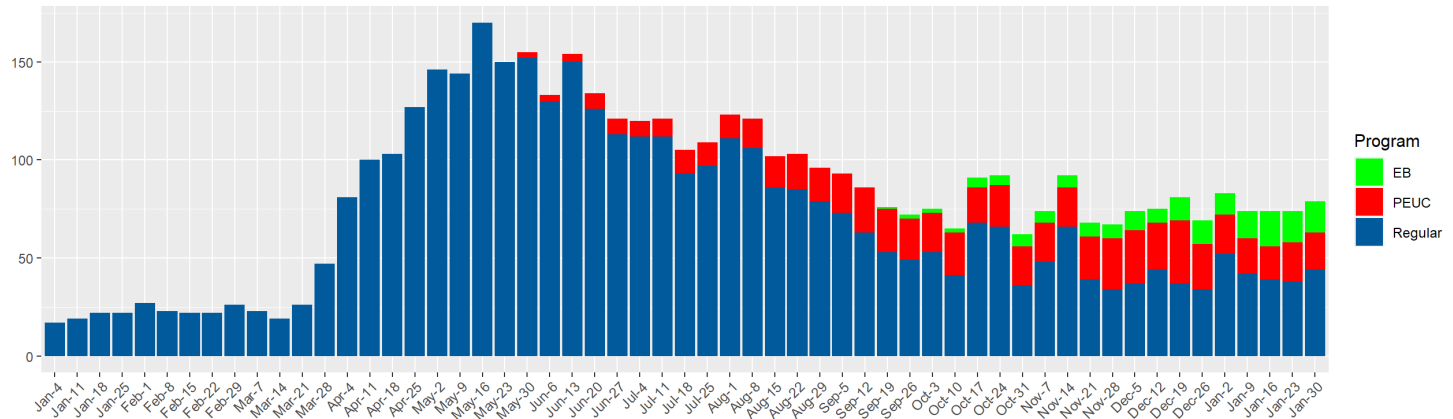
UI Claims for Mineral County

Mineral County Unemployment Insurance Claims by Week since January 2020

initial claims



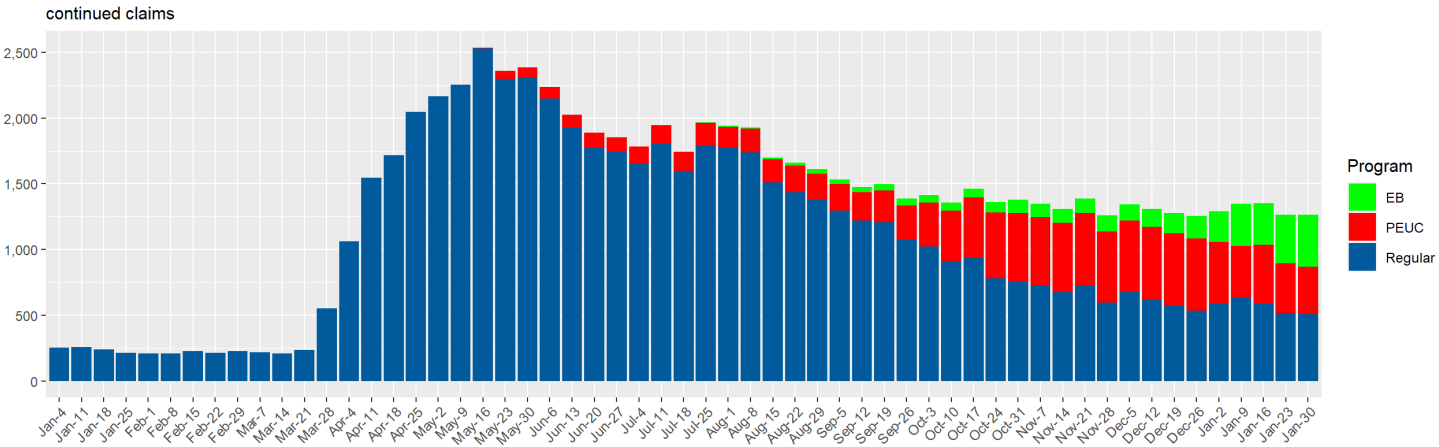
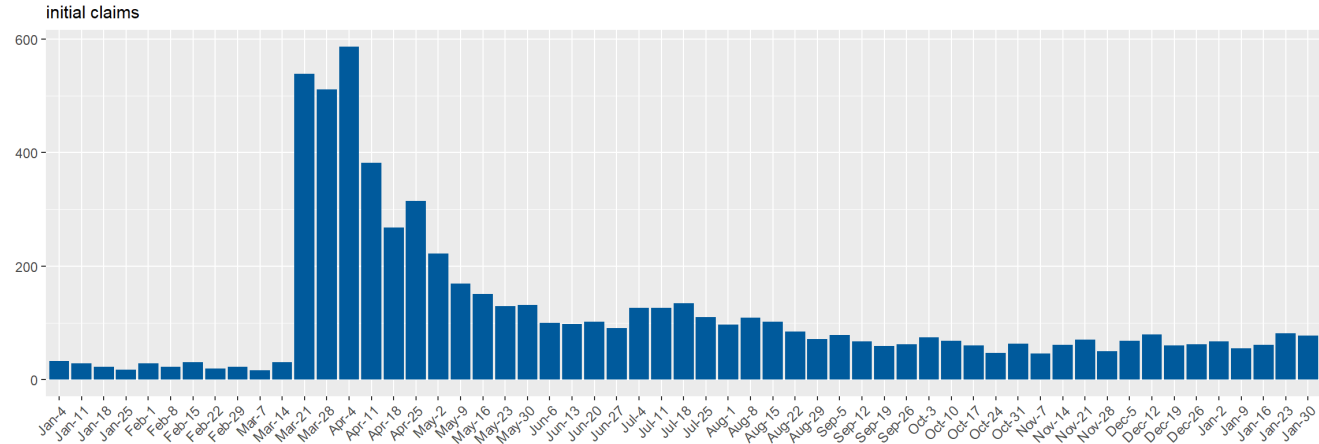
continued claims



Source: DETR Internal Reporting

UI Claims for Nye County

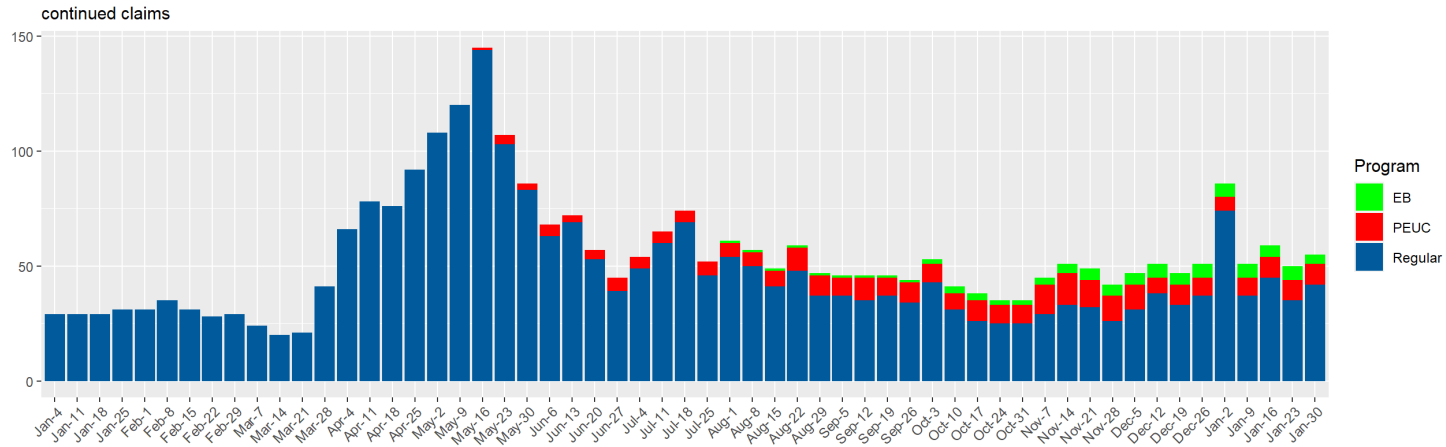
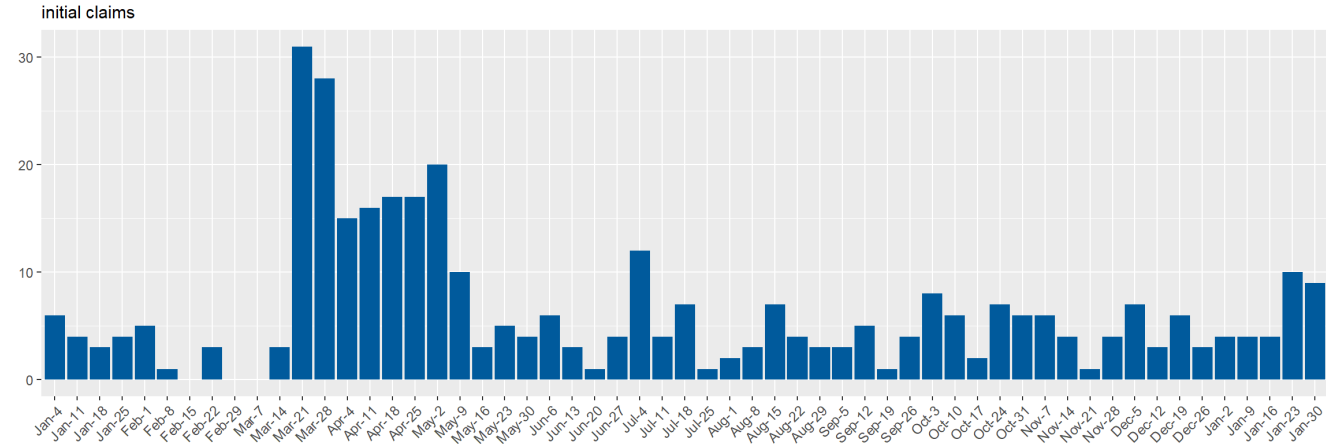
Nye County Unemployment Insurance Claims by Week since January 2020



Source: DETR Internal Reporting

UI Claims for Pershing County

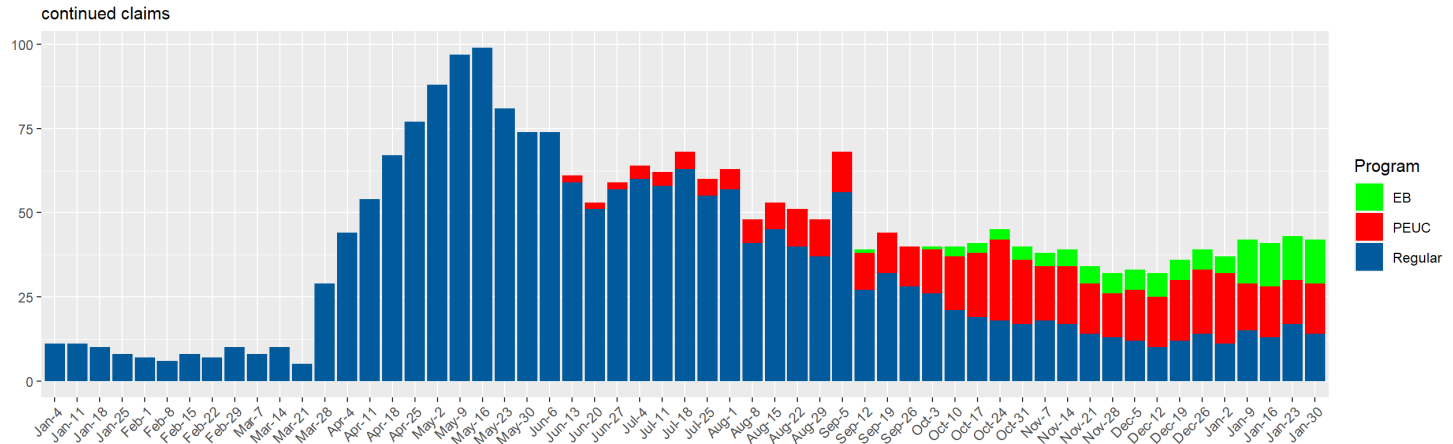
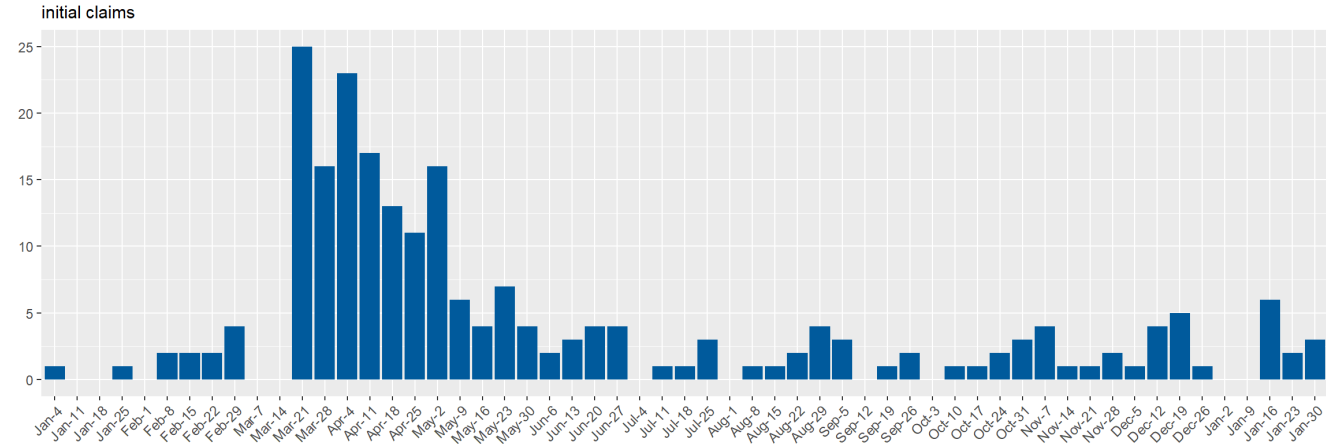
Pershing County Unemployment Insurance Claims by Week since January 2020



Source: DETR Internal Reporting

UI Claims for Storey County

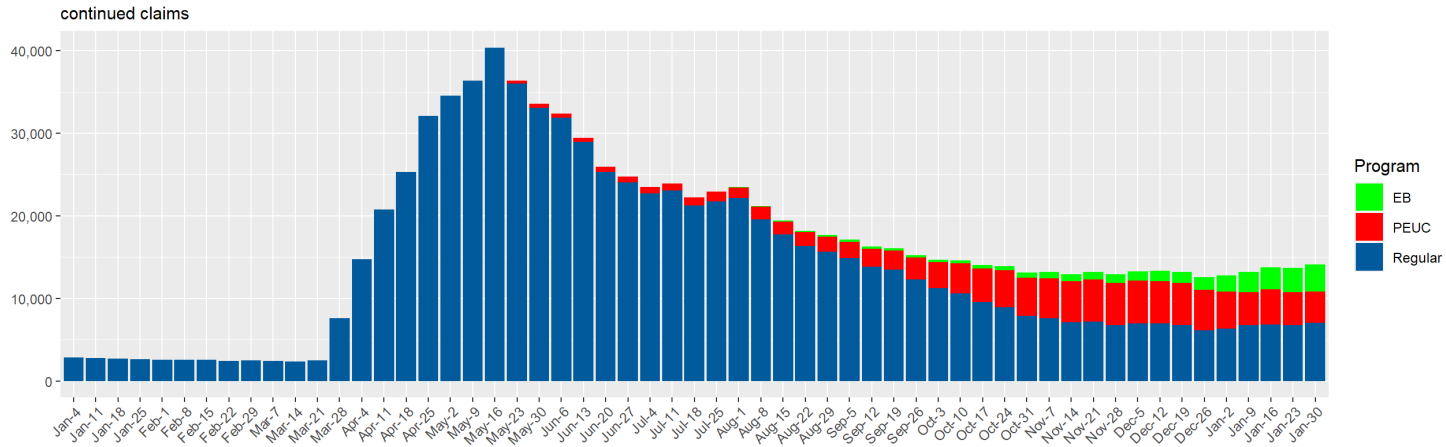
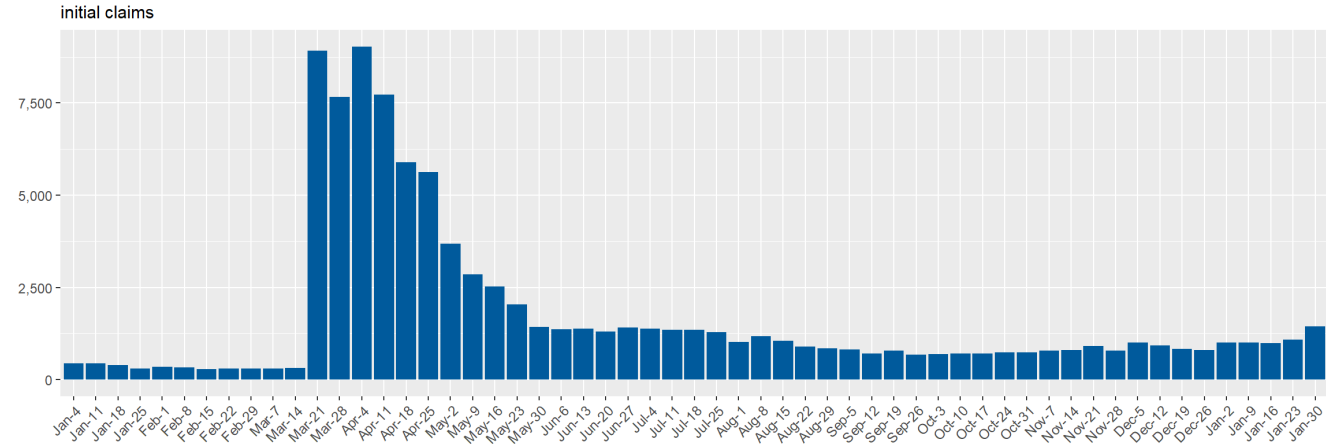
Storey County Unemployment Insurance Claims by Week since January 2020



Source: DETR Internal Reporting

UI Claims for Washoe County

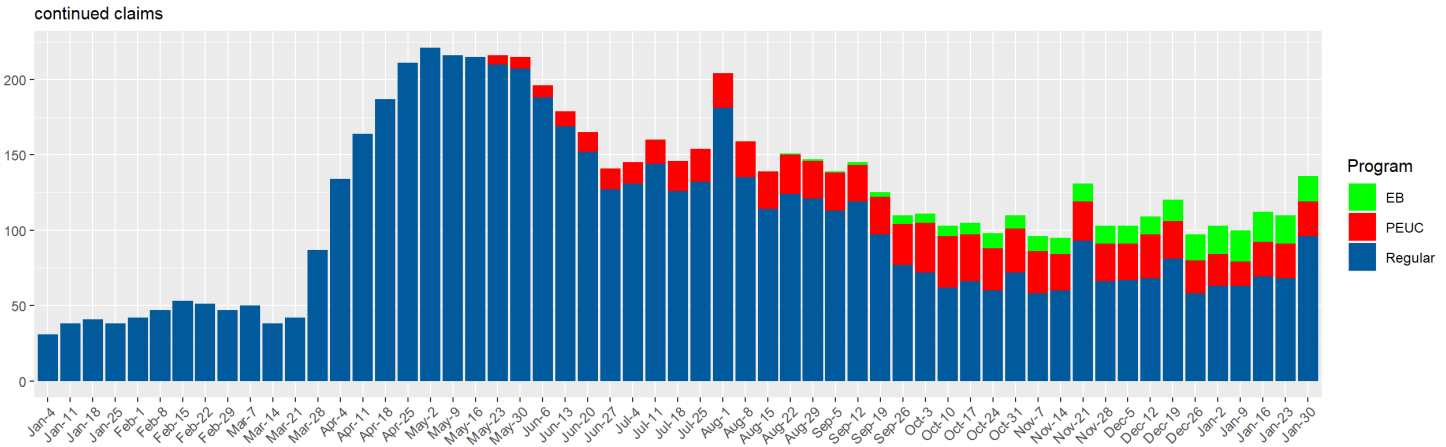
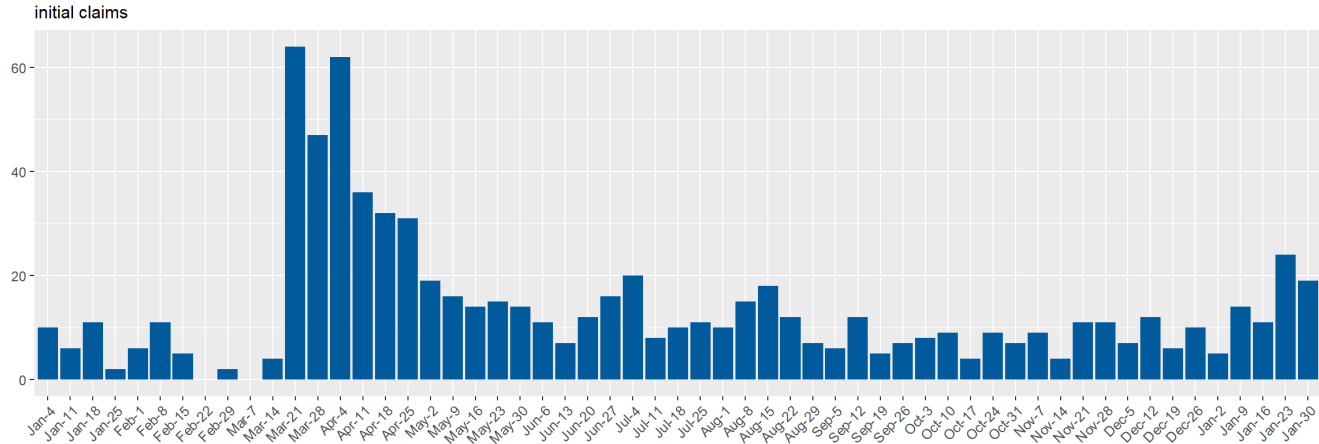
Washoe County Unemployment Insurance Claims by Week since January 2020



Source: DETR Internal Reporting

UI Claims for White Pine County

White Pine County Unemployment Insurance Claims by Week since January 2020



Source: DETR Internal Reporting

Data Dashboard Page

In effort to limit the overall length of this report, an interactive report was created that includes weekly data for all programs. This data is available for download on the "Data" tab of the Weekly Claims Characteristics by Program report below.

Weekly Reports

Weekly Claims Dashboard

The claims data contained on the ETA 539 report are used in current economic analysis of unemployment trends in Nevada.

Weekly Claims by County

The claims data contained in this dashboard provide unemployment insurance trends by county in the State of Nevada. This dashboard allows for exploration of these trends.

Monthly Reports

Monthly Claims Dashboard

The ETA 5159 report contains monthly information on claims activities and on the number and amount of payments under state unemployment insurance laws. The data on this report provides the basis for many common UI measures such as average duration, exhaustion rates, weeks compensated, and benefits paid. This dashboard allows for exploration of these measures and trends in the State of Nevada.

Monthly Claims Demographics

The ETA 203 report provides information about the characteristics of Unemployment Insurance (UI) claimants in Nevada. This data is useful in describing the population of claimants and determining how that population changes over time and under various conditions. It can also be compared with characteristic figures of the total unemployed as published by the Bureau of Labor Statistics (BLS).

Glossary of Terms

Initial Claim: Any notice of unemployment filed to request a determination of eligibility for unemployment insurance benefits, or to begin a subsequent period of eligibility within a period of eligibility. Initial claims measure emerging unemployment in the state.

Additional Claim: An initial Claim which reopens a previously existing claim, where the claimant stopped filing due to intervening employment.

Reopened Claim: A reopened claim is filed if you have previously filed a claim but never submitted any weekly claims.

Continued Claim: After an initial claim determines a claimant is eligible for unemployment insurance benefits, the claimant's weekly benefit claims are counted under continued claims. Continued claims in aggregate represents the insured unemployed receiving benefits in the state, and is used for economic purposes.

Credits

Special thanks to all the R and RStudio developers that built the packages to make this possible!

Packages used in this report: xaringan, xaringantheme, tidyverse, rmarkdown, viridis, scales, data.table, RcppRoll, kableExtra, knitr, patchwork, ggforce, ggthemes

Prepared by:
Department of Employment, Training & Rehabilitation
Research & Analysis Bureau